

## AVENTICS Schwenkzapfenbefestigung



### Technische Daten

Branche  
Für Serie  
geeigneter Kolbendurchmesser  
Gewicht

Industrie  
TaskMaster®  
82.55 mm  
0.508 kg

### Werkstoff

Werkstoff Gehäuse  
Werkstoff Schrauben  
Werkstoff Führungsbuchse  
Materialnummer

Aluminium-Druckguss  
Stahl, galvanisiert  
Stahl, galvanisiert  
R432013489

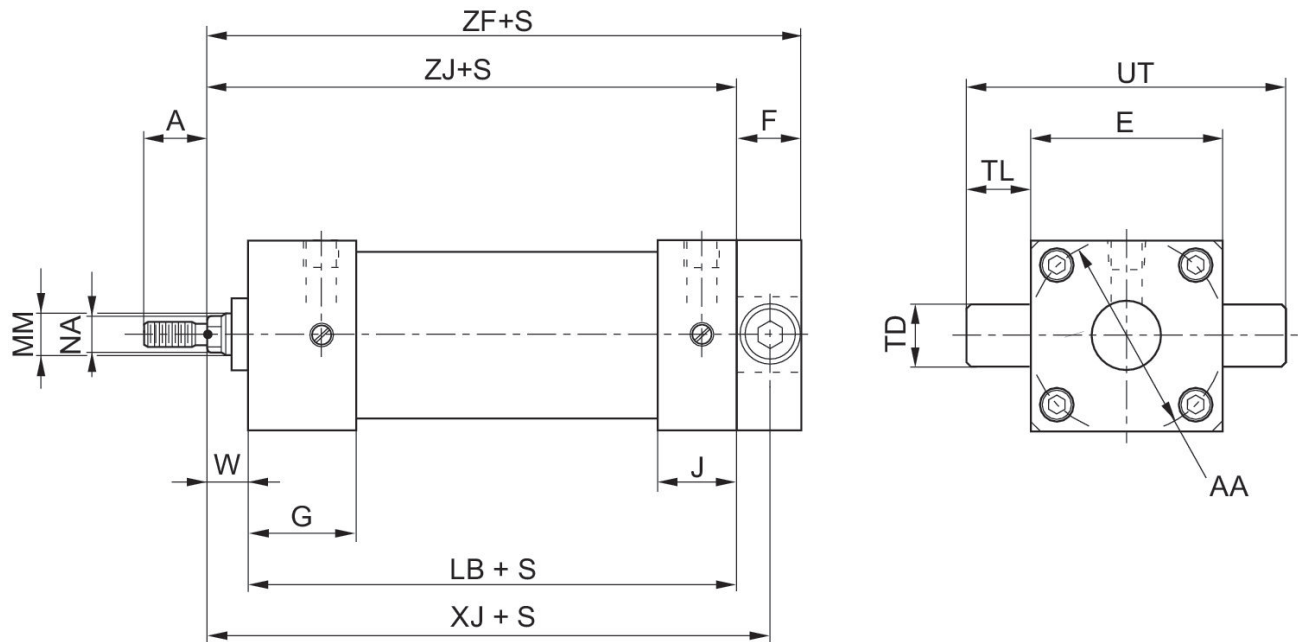
Fig. 2

# Schwenkzapfenbefestigung, Serie MT1, MT2

R432013489

2023-10-26

MT2, hinten



S = Hub

## Abmessungen in inch

| Ø    | Material-nummer | MM    | E    | F    | W    | AA   | LB   | TD   | TL   |
|------|-----------------|-------|------|------|------|------|------|------|------|
| 1.5  | R432013510      | 0.625 | 2.00 | 1.00 | 1.38 | 2.02 | 3.98 | 1.00 | 1.00 |
| 2.0  | R432013507      | 0.625 | 2.5  | 1.00 | 1.38 | 2.6  | 3.98 | 1.00 | 1.00 |
| 2.5  | R432013513      | 0.625 | 3.00 | 1.00 | 1.38 | 3.1  | 4.1  | 1.00 | 1.00 |
| 3.25 | R432013489      | 1.00  | 3.75 | 1.00 | 1.5  | 3.90 | 4.86 | 1.00 | 1.00 |
| 4.0  | R432013516      | 1.00  | 4.50 | 1.00 | 1.5  | 4.70 | 4.86 | 1.00 | 1.00 |

| Ø    | UT   | XJ   | ZF   | ZJ   |
|------|------|------|------|------|
| 1.5  | 4.00 | 5.1  | 5.63 | 4.6  |
| 2.0  | 4.5  | 5.1  | 5.63 | 4.6  |
| 2.5  | 5.00 | 5.22 | 5.75 | 4.72 |
| 3.25 | 5.77 | 6.11 | 6.63 | 5.61 |
| 4.0  | 6.49 | 6.11 | 5.63 | 5.61 |

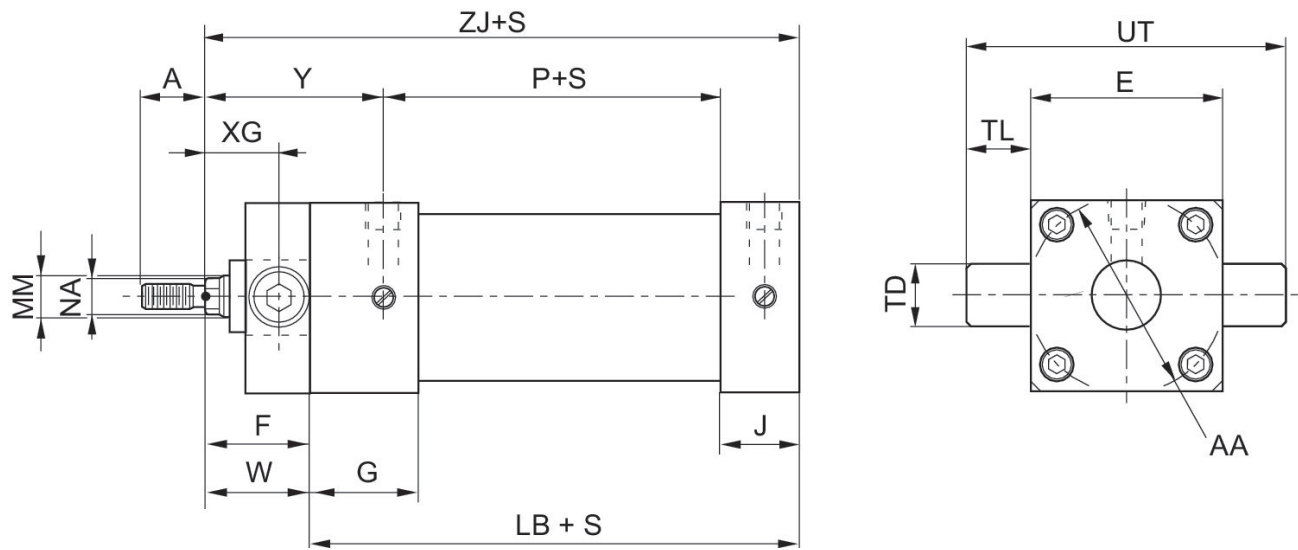
Fig. 1

# Schwenkzapfenbefestigung, Serie MT1, MT2

R432013489

2023-10-26

MT1, vorn



S = Hub

## Abmessungen in inch

| Ø    | Material-nummer | MM    | E    | F    | W    | AA   | LB   | TD   | TL   |
|------|-----------------|-------|------|------|------|------|------|------|------|
| 1.5  | R432013510      | 0.625 | 2.00 | 1.00 | 1.38 | 2.02 | 3.98 | 1.00 | 1.00 |
| 2.0  | R432013507      | 0.625 | 2.5  | 1.00 | 1.38 | 2.6  | 3.98 | 1.00 | 1.00 |
| 2.5  | R432013513      | 0.625 | 3.00 | 1.00 | 1.38 | 3.1  | 4.1  | 1.00 | 1.00 |
| 3.25 | R432013489      | 1.00  | 3.75 | 1.00 | 1.5  | 3.90 | 4.86 | 1.00 | 1.00 |
| 4.0  | R432013516      | 1.00  | 4.50 | 1.00 | 1.5  | 4.70 | 4.86 | 1.00 | 1.00 |

| Ø    | UT   | XG   | ZJ   |
|------|------|------|------|
| 1.5  | 4.00 | 0.12 | 5.6  |
| 2.0  | 4.5  | 0.12 | 5.6  |
| 2.5  | 5.00 | 0.12 | 5.72 |
| 3.25 | 5.77 | 0.25 | 6.61 |
| 4.0  | 6.49 | 0.25 | 6.61 |