

Detachable Clevis (MP2 mount)

R432008308

Clevis
mounting

2024-03-26

AVENTICS Clevis mountings



Technical data

Industry

Industrial

Standardization

NFPA

Piston diameter

101.6 mm

Weight

1.87 kg

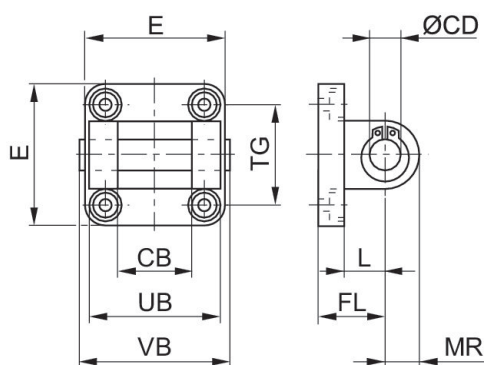
Material

Material

Steel, chrome-plated

Part No.

R432008308



Detachable Clevis (MP2 mount)

R432008308

Clevis
mounting

2024-03-26

Dimensions in inches

Part No.	Ø	CB H14	Ø CD H9	E	FL	L	MR	UB	VB
R432013371	1.5	0.75	0.500	2.00	1.13	0.75	0.53	-	-
R432008309	1.5	0.75	0.500	2.00	1.13	0.75	0.69	-	-
R432012512	2.0	0.75	0.500	2.50	1.13	0.75	0.53	-	-
R432008305	2.0	0.75	0.500	2.50	1.13	0.75	0.53	-	-
R432013379	2.5	0.75	0.500	3.00	1.13	0.75	0.53	-	-
R432008306	2.5	0.75	0.500	3.00	1.13	0.75	0.53	-	-
R432013394	3.25	1.25	0.750	3.75	1.87	1.31	0.88	-	-
R432008307	3.25	1.25	0.750	3.75	1.88	1.25	1.00	-	-
R432013402	4.0	1.25	0.750	4.50	1.88	1.25	0.78	-	-
R432008308	4.0	1.25	0.750	4.50	1.88	1.25	1.00	-	-

Part No.	TG
R432013371	-
R432008309	-
R432012512	-
R432008305	-
R432013379	-
R432008306	-
R432013394	-
R432008307	-
R432013402	-
R432008308	-