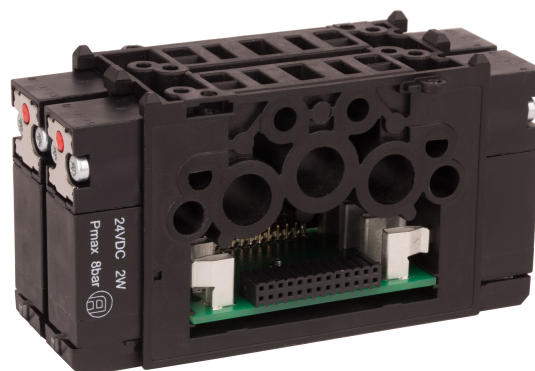


# Base plate, Series ES05

R422102621



## Technical data

Industry  
Industrial

Type  
Base plate

For series  
ES05

Type  
Double Solenoid

Delivery unit  
1 piece

Scope of delivery  
Base plate 2x, incl. 1 seal

Working pressure min.  
0 bar

Working pressure max  
8 bar

Control pressure min.  
3 bar

Control pressure max.  
8 bar

Min. ambient temperature  
5 °C

Max. ambient temperature  
50 °C

Min. medium temperature  
5 °C

Max. medium temperature  
50 °C

Medium  
Compressed air

Max. particle size  
40 µm

Oil content of compressed air min.  
0 mg/m<sup>3</sup>

Oil content of compressed air max.  
25 mg/m<sup>3</sup>

Tightening torque for mounting screws  
0.9 Nm

## Material

Housing material  
Polyamide fiber-glass reinforced  
Seal material  
Nitrile butadiene rubber

Part No.  
R422102621

## Technical information

The min. control pressure must be adhered to, since otherwise faulty switching and valve failure may result!

The pressure dew point must be at least 15 °C under ambient and medium temperature and may not exceed 3 °C .

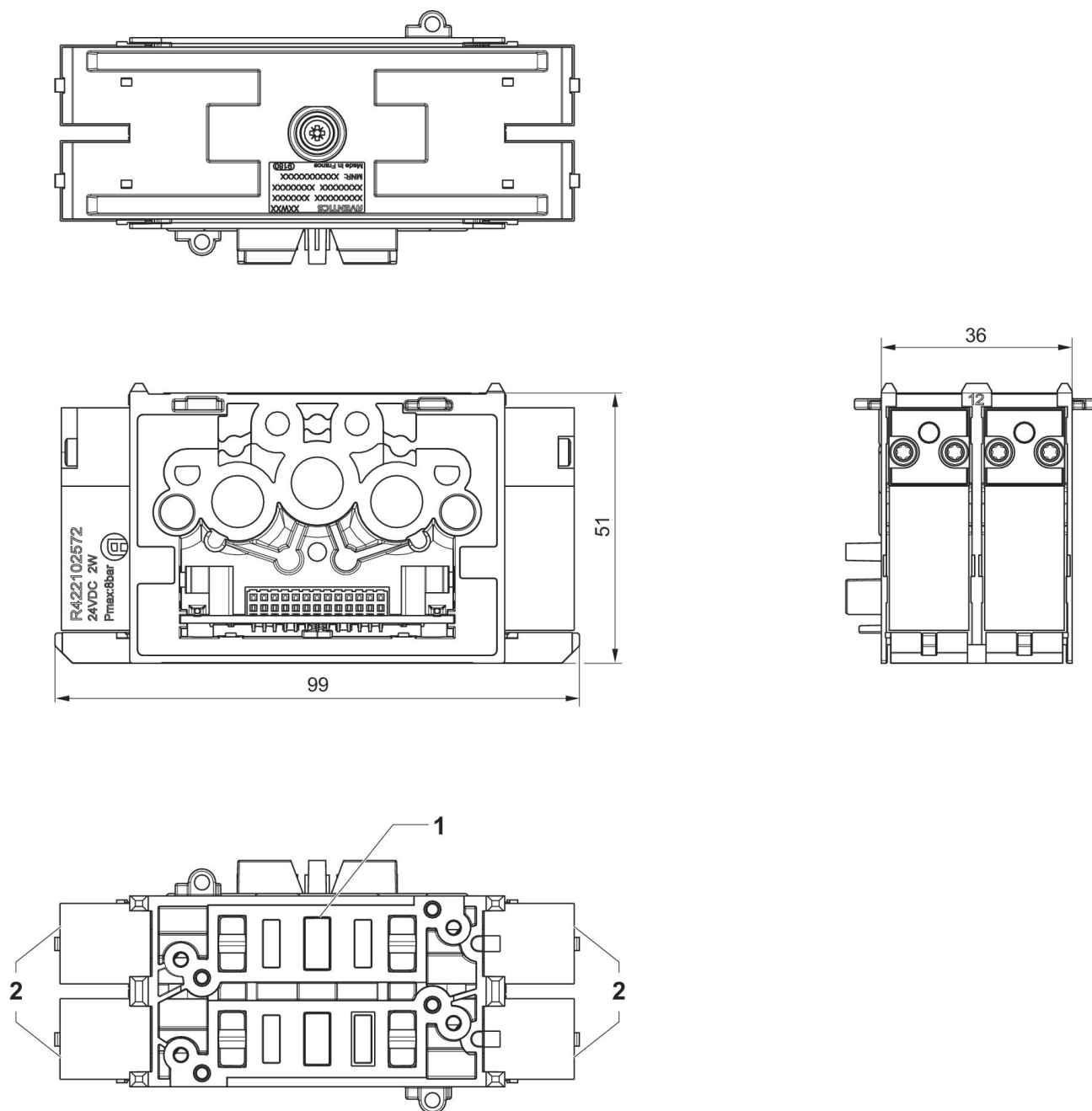
The oil content of compressed air must remain constant during the life cycle.

Use only the approved oils from AVENTICS. Further information can be found in the "Technical information" document (available in <https://www.emerson.com/en-us/support>).

For use in conjunction with end plate kit with D-Sub

## Dimensions

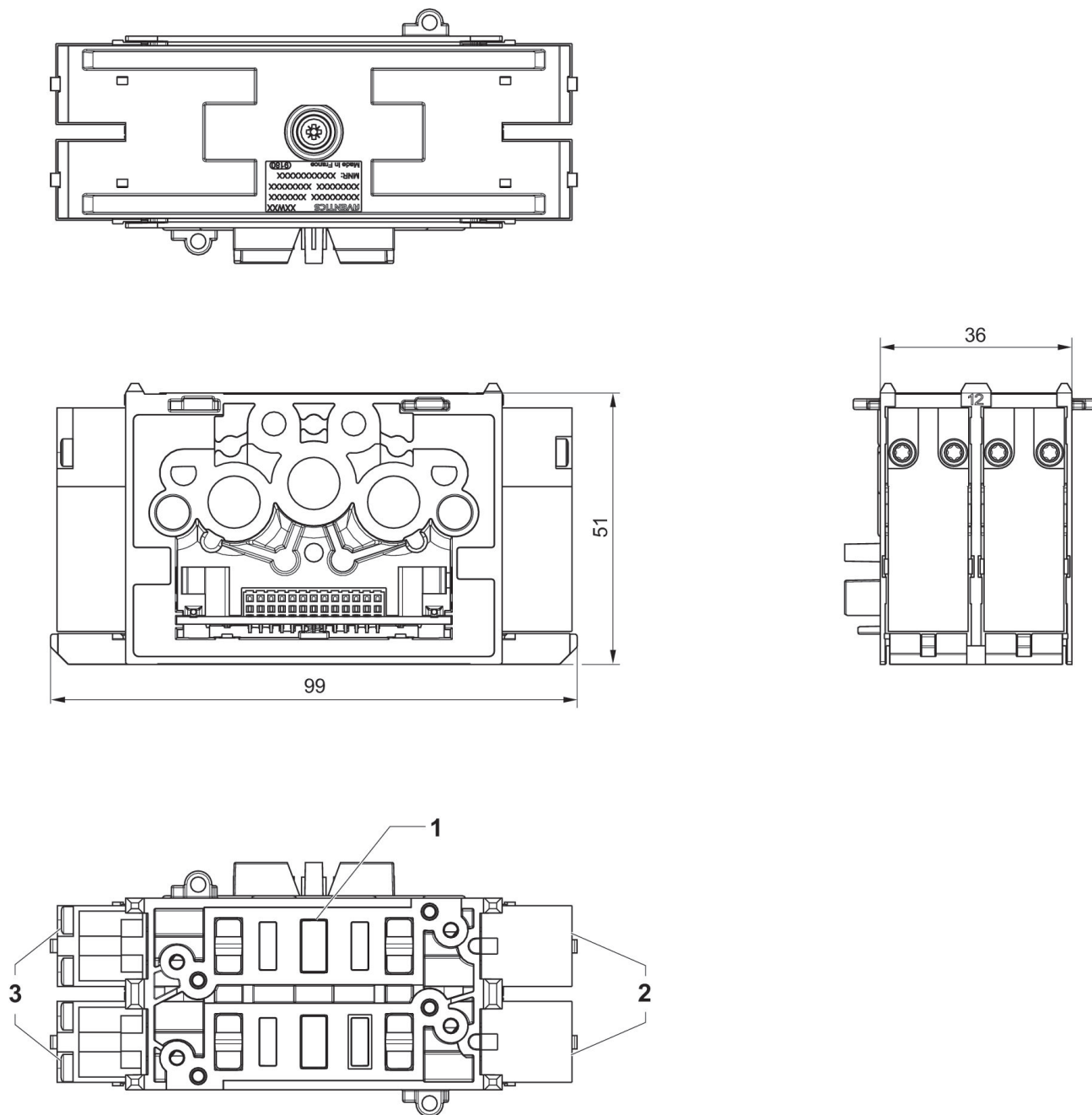
Fig. 2



- 1) Place for 2 valves  
2) 4 pilot valves

## Dimensions

Fig. 1



- 1) Place for 2 valves
  - 2) 2 pilot valves
  - 3) Pilot blanking plate
- Only for single solenoid 5/2 direction valve function