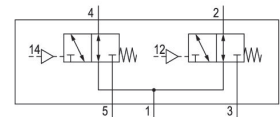
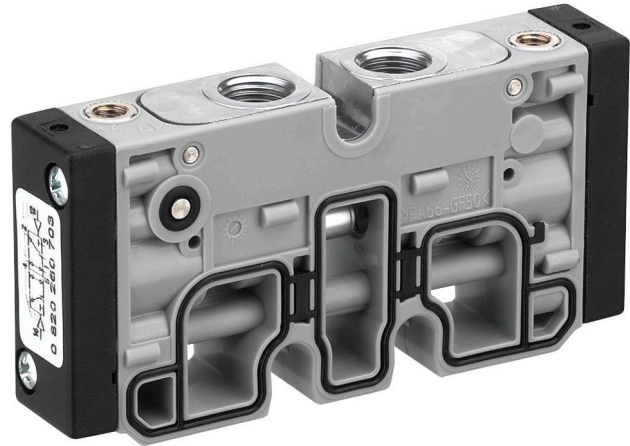


AVENTICS Series TC15 Directional valves

The AVENTICS Series TC15 valve system is the perfect choice for applications calling for lightweight valves with high flow rate in a small space. With valves operated either pneumatically or electrically, the valve system can be modularly expanded to up to 12 valves. Valves can be exchanged without dismantling the valve block.

- $Q_n = 1100 \text{ l/min} \dots 1500 \text{ l/min}$
- 2x3/2, 5/2, 5/3 Spool valves with polyamide housing
- Pneumatic connection G1/4, 1/4-18 NPTF
- Working pressure min./max. -0.9/10 bar
- Voltage 12 V DC, 24 V DC, 24 V AC, 110 V AC, 230 V AC
- Electrical connection ISO form C, M8 3-pin; M8 4-pin



Technical data

Industry

Industrial

Activation

Pneumatically

Valve type

Spool valve

Switching principle

2x 3/2 NO/NO, with spring return

Valve function

NO/NO

Sealing principle

Soft seal

Connection type

Plate connection

Pipe connection

Compressed air connection output

G 1/4

Compressed air connection pilot input

M5

Nominal flow Q_n

1100 l/min

Flow conductance b

0.25

Flow conductance C

5.9 l/(s*bar)

Min. working pressure

-0.9 bar

Max. working pressure

10 bar

Min. control pressure

3 bar

2x3/2-directional valve, Series TC15

R422102233

Series
TC15

2025-12-18

Max. control pressure	10 bar
Blocking principle	Plate principle
Min. ambient temperature	-10 °C
Max. ambient temperature	50 °C
Min. medium temperature	-10 °C
Max. medium temperature	50 °C
Medium	Compressed air
Min. oil content of compressed air	0 mg/m ³
Max. oil content of compressed air	5 mg/m ³
Max. particle size	5 µm
Mounting screw tightening torque	2.5 Nm
Weight	0.18 kg

Material

Housing material	Polyamide, fiber-glass reinforced
Seal material	Acrylonitrile butadiene rubber
Material, front cover	Polyamide, fiber-glass reinforced
Material threaded bushing	Brass Die cast zinc
Surface threaded bushing	chrome-plated nickel-plated
Part No.	R422102233

Technical information

The min. control pressure must be adhered to, since otherwise faulty switching and valve failure may result!

The pressure dew point must be at least 15 °C less than ambient and medium temperature and may not exceed 3 °C.

The oil content of compressed air must remain constant during the life cycle.

Use only the approved oils from AVENTICS. Further information can be found in the "Technical information" document (available in <https://www.emerson.com/en-us/support>).

