

3/2-directional valve, Series DO10

R422004284

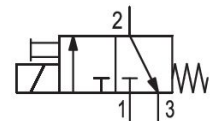
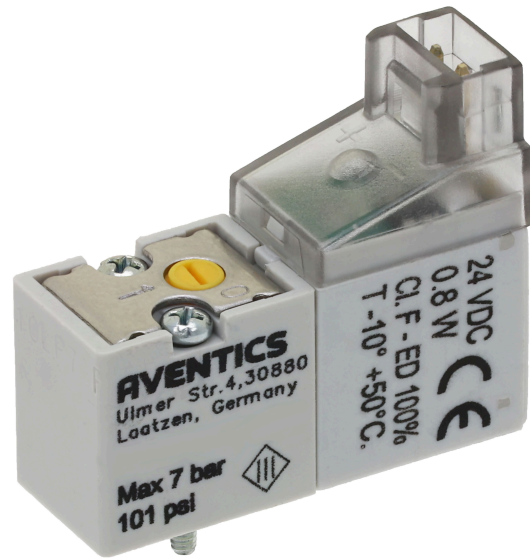
Series DO

2024-08-05

- Various connection options possible
- Assembly takes place on manifold strips
- Extensive voltage range
- ATEX version available

AVENTICS Series DO Directional valves

The AVENTICS Series DO offer a simple, reliable and robust solution for all classical pilot control functions with direct electrical operation.



Technical data

Industry

Industrial

Activation

Electrically

Frame size

DO10

Valve type

Poppet valve

Sealing principle

Soft seal

Connection type

Plate connection

Manual override

without detent

Nominal flow Qn 1 to 2

8 l/min

Nominal flow Qn 2 to 3

12 l/min

Min. working pressure

0 bar

Max. working pressure

7 bar

Electrical connection type

Socket

Electrical connection size

Industrial plug connector

Protection class with connection

IP50

Protective circuit

Bipolar Z-diode

3/2-directional valve, Series DO10

Series DO

R422004284

2024-08-05

| | |
|------------------------------------|---------------------|
| Operational voltage DC | 24 V |
| Voltage tolerance DC | -10 % / +10 % |
| Coil width | 10 mm |
| LED status display | Yellow |
| Power consumption DC | 0.8 W |
| Duty cycle | 100 % |
| Min. ambient temperature | -10 °C |
| Max. ambient temperature | 50 °C |
| Min. medium temperature | -10 °C |
| Max. medium temperature | 50 °C |
| Medium | Compressed air |
| Min. oil content of compressed air | 0 mg/m ³ |
| Max. oil content of compressed air | 5 mg/m ³ |
| Max. particle size | 40 µm |
| Mounting on manifold strip | PRS strip |
| Mounting screws | M1.6 |
| Weight | 0.011 kg |

Material

Housing material Polyamide

Part No. R422004284

Technical information

The min. control pressure must be adhered to, since otherwise faulty switching and valve failure may result!

The pressure dew point must be at least 15 °C less than ambient and medium temperature and may not exceed 3 °C.

The oil content of compressed air must remain constant during the life cycle.

Use only the approved oils from AVENTICS. Further information can be found in the "Technical information" document (available in <https://www.emerson.com/en-us/support>).

Seals: fluorocautchouc (dynamic), nitrile butadiene rubber (static)

3/2-directional valve, Series DO10

R422004284

Series DO

2024-08-05

