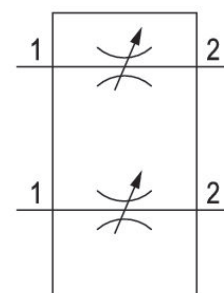
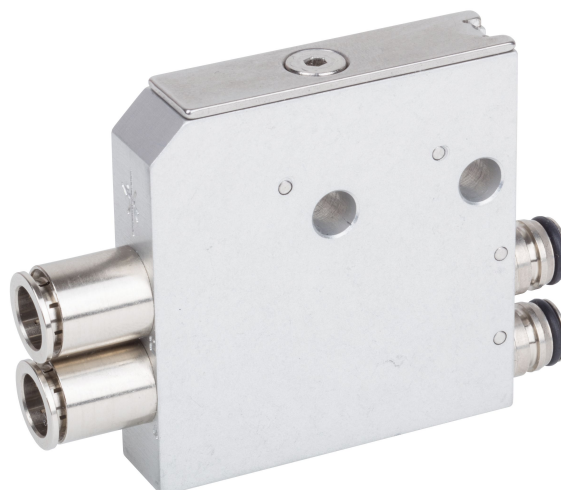


Throttle module

R422003577

Series CH01

■ $Q_n = [[38] \text{ l/min}] \dots [[2800] \text{ l/min}]$



Technical data

Industry
Industrial

Type
direction of throttle 2 # 1 direction of throttle 1 # 2

Compressed air connection type input
push-in fitting

Compressed air connection output
Ø 6

Working pressure max
10 bar

Min. ambient temperature
-10 °C

Max. ambient temperature
60 °C

Min. medium temperature
-10 °C

Max. medium temperature
60 °C

Medium
Compressed air

Weight
0.115 kg

Housing material
Aluminum

Seal material
Acrylonitrile butadiene rubber

Part No.
R422003577

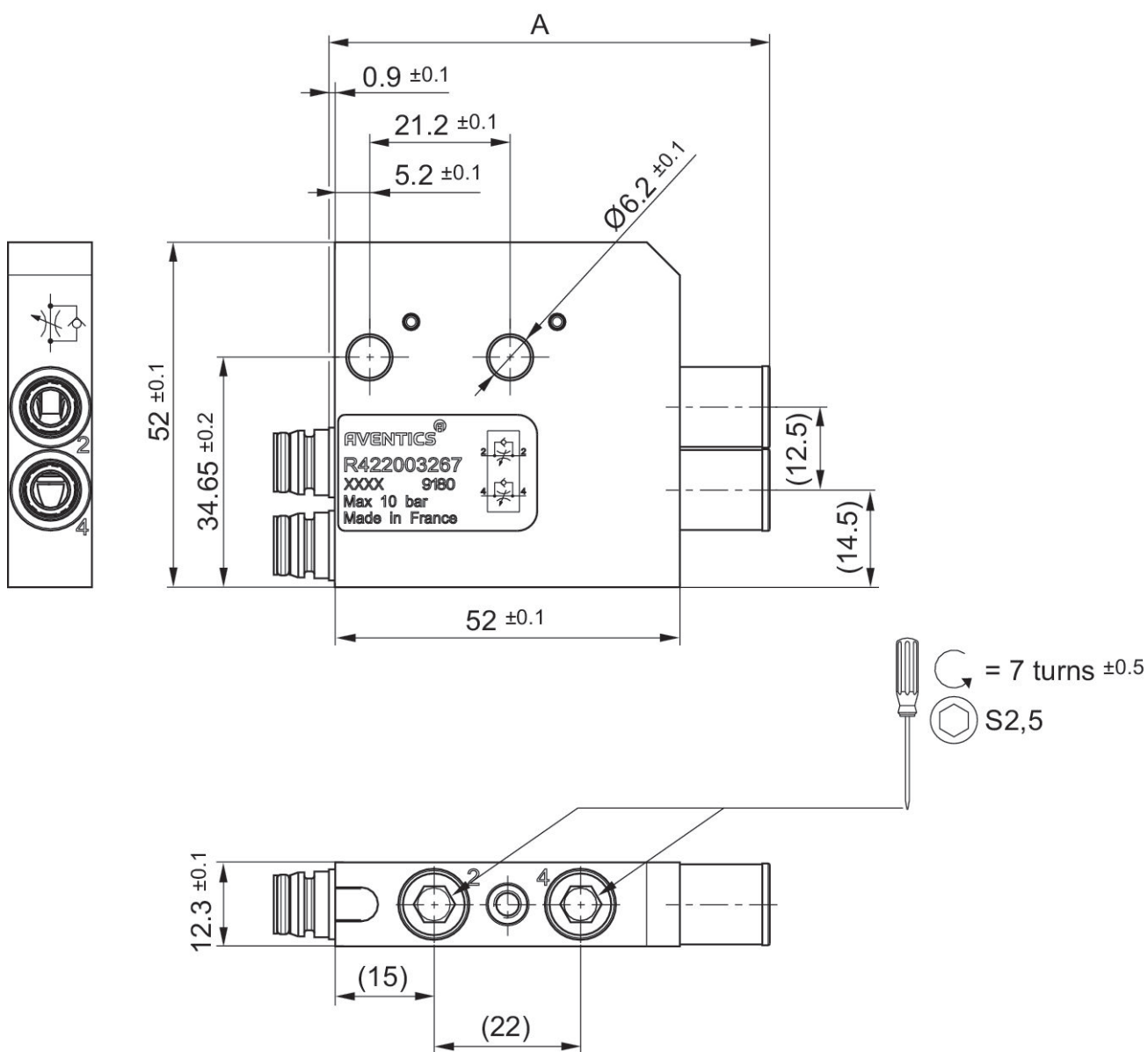
Technical information

The pressure dew point must be at least 15 °C under ambient and medium temperature and may not exceed 3 °C .

The oil content of compressed air must remain constant during the life cycle.

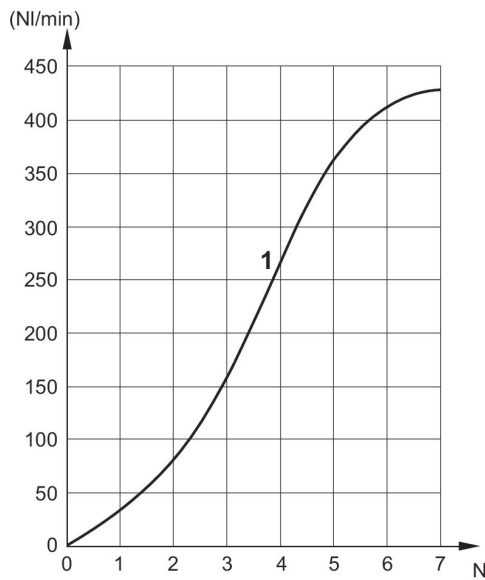
Use only the approved oils from AVENTICS. Further information can be found in the “Technical information” document (available in <https://www.emerson.com/en-us/support>).

Dimensions



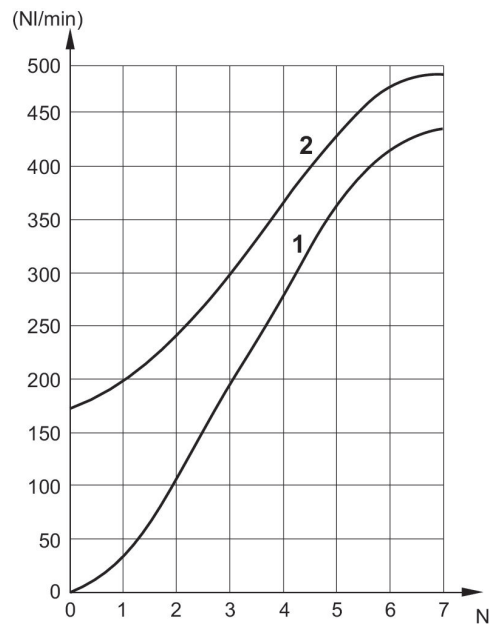
Part No.	Installation length
	A
R422003311	62.2±0.5
R422003267	66.2±0.5
R422003666	65.2±0.5
R422003577	62.2±0.5
R422003578	66.2±0.5
R422003667	65.2±0.5

Fig. 2
Double Solenoid



1) Controlled flow

Fig. 1
Single Solenoid



1) Controlled flow
2) Uncontrolled flow