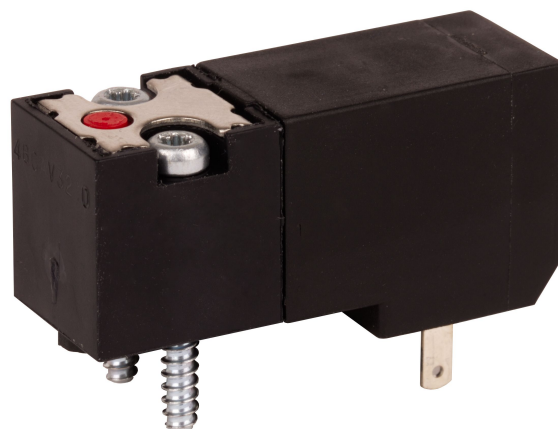


Pilot valve, Series ES05

R422003356

Series ES05

■ $Q_n = [[200 \dots 310] \text{ l/min}]$



Technical data

Industry
Industrial

Activation
Electrically

DC operating voltage
24 V

Voltage tolerance DC
-15% / +10%

Manual override
without detent

Electrical connection size
form C, industry

Control pressure min.
3 bar

Control pressure max.
8 bar

Min. ambient temperature
5 °C

Max. ambient temperature
50 °C

Min. medium temperature
5 °C

Max. medium temperature
50 °C

Medium
Compressed air

Power consumption DC
2 W

mounting screws
Hexalobular socket (TORX) ISO 10664-10
Mounting screw tightening torque
0.9 Nm

Tightening torque tolerance
 $\pm 0,1$ mT
Delivery unit
1 piece

Housing material
Polyamide
Seal material
Acrylonitrile butadiene rubber

Part No.
R422003356

Technical information

Coil for single wiring connection, rotatable

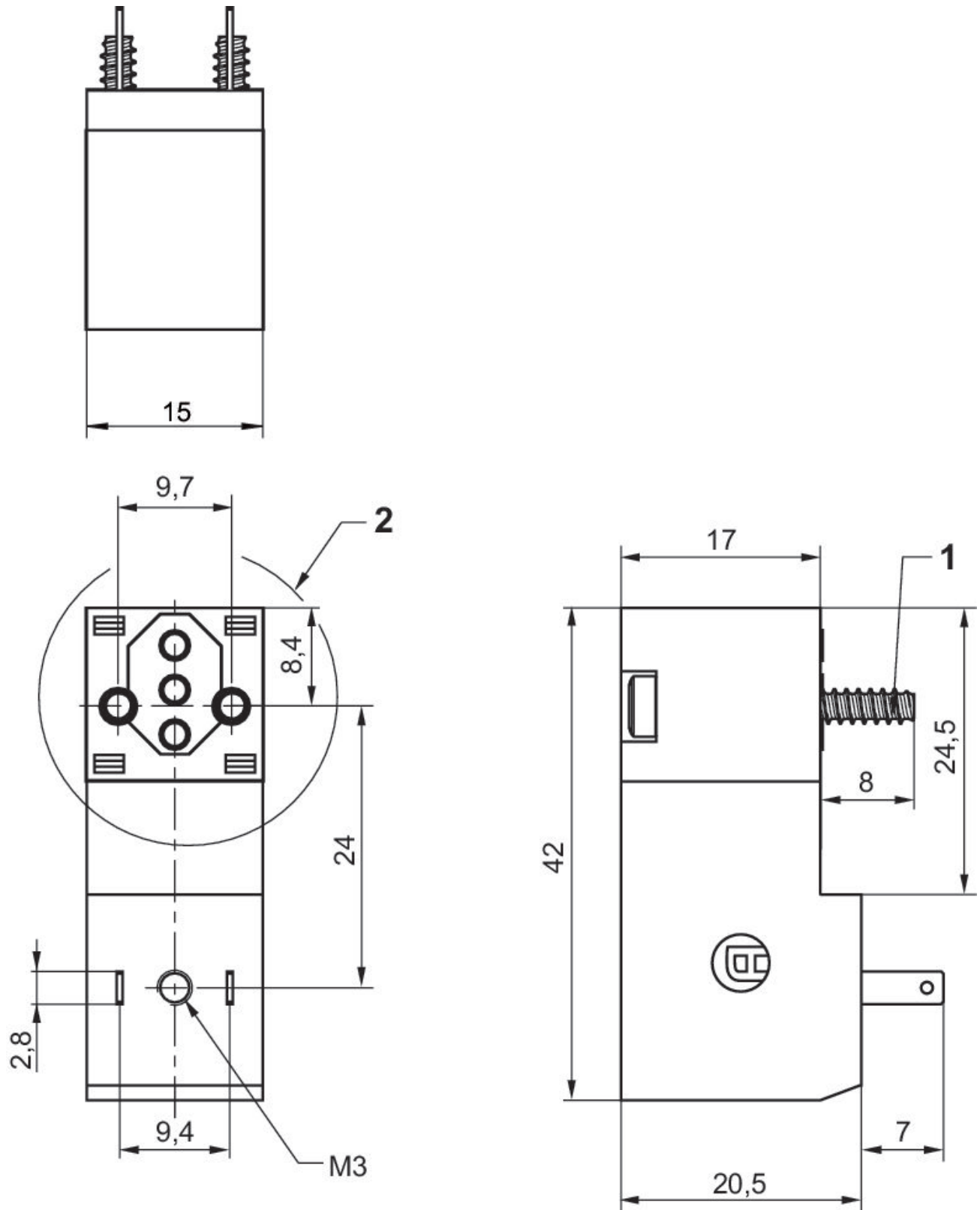
The min. control pressure must be adhered to, since otherwise faulty switching and valve failure may result!

The pressure dew point must be at least 15 °C under ambient and medium temperature and may not exceed 3 °C .

The oil content of compressed air must remain constant during the life cycle.

Use only the approved oils from AVENTICS. Further information can be found in the "Technical information" document (available in <https://www.emerson.com/en-us/support>).

Dimensions



- 1) Screws for plastic Ø3
- 2) rotatable 90°