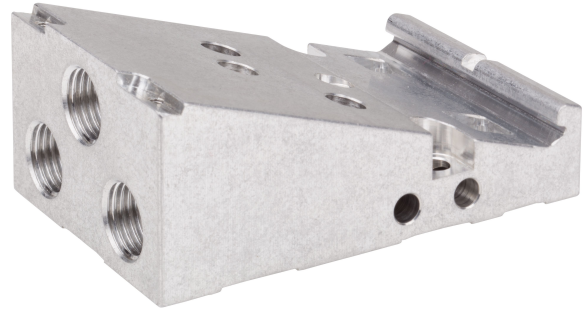


Base plate

R414007542

EV03

2024-06-18



Technical data

Industry

Industrial

Type

Base plate

Compressed air connection

G 1/4

Min. working pressure

0 bar

Max. working pressure

11 bar

Min. ambient temperature

-10 °C

Max. ambient temperature

60 °C

Medium

Compressed air

Material

Part No.

R414007542

Base plate

R414007542

EV03

2024-06-18

