

## AVENTICS Series SA1 Industrial shock absorbers

The AVENTICS Series SA1 industrial shock absorbers decelerate reliably moving masses and thereby increase process speed, production quality, the service life of production facilities and reduce operating noise.



### Technical data

Industry	Industrial
Type	SA1-MA
Mounting thread	M27x2
Stroke	40 mm
Max. energy absorption/stroke	390 Nm
Max. energy absorption/hour	175500 Nm
Cushioning	adjustable
Medium	Oil
Certificates	CE declaration of conformity RoHS Conforms with REACH
Min. ambient temperature	-20 °C
Max. ambient temperature	80 °C
Effective mass $m_e$ min.	38 kg
Effective mass $m_e$ max.	18000 kg
Min. return spring force	11 N
Max. return spring force	20 N
Min. impact speed	0.1 m/s
Max. impact speed	6 m/s
Mounting	Lock nut

# Industrial shock absorber, Series SA1-MA

R412028892

Series SA1

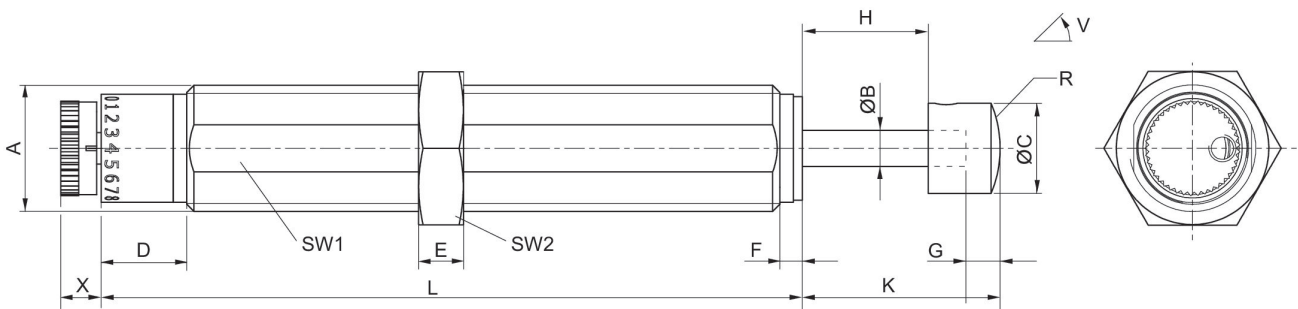
2024-03-27

Weight 0.29 kg

## Material

Material cylinder tube	Steel, chrome-plated
Surface cylinder tube	salt bath nitrocarburized
Material piston rod	Stainless Steel
Surface piston rod	ground and hardened
Material stop	Steel, chrome-plated
Surface stop	hardened and bronzed
Material lock nut	Steel, chrome-plated
Surface lock nut	salt bath nitrocarburized
Scraper material	Polyurethane
Part No.	R412028892

## Dimensions



A = mounting thread  
V = tilt

Part No.	Type	Mounting thread	ØB	ØC	D	E	F	G	H
R412010323	SA1-MA	M14x1,5	4	10	9.5	5	2.5	4	14
R412010324	SA1-MA	M20x1,5	6	16	10	6	2.5	4	19
R412010325	SA1-MA	M25x1,5	8	20	9	8	3.5	5	25
R412028891	SA1-MA	M27x2	8	20	9	8	3.5	5	25
R412010326	SA1-MA	M25x1,5	8	20	9	8	3.5	5	40
R412028892	SA1-MA	M27x2	8	20	9	8	3.5	5	40

Part No.	K	L	R	SW1	SW2	W [°]	X
R412010323	22	78	13	13	17	5	4.5
R412010324	29	88	32.5	18	24	2	5.7
R412010325	38	108	30.3	23	30	2	8.3
R412028891	38	108	30.3	24	30	2	8
R412010326	53	130	30.3	23	30	1	8

# Industrial shock absorber, Series SA1-MA

Series SA1

R412028892

2024-03-27

---

Part No.	K	L	R	SW1	SW2	W [°]	X
R412028892	53	130	30.3	24	30	1	8