

Coupling plug with internal thread

R412028884

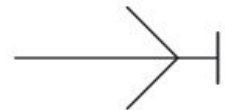
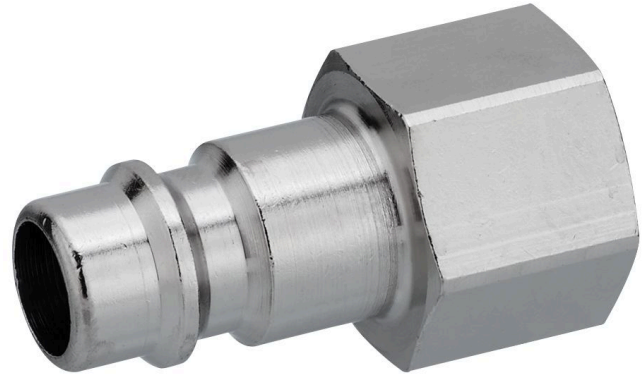
Series CP1

2024-10-23

- $Q_n = 3200$ l/min

AVENTICS Series CP1 Couplings

The AVENTICS Series CP1 of safe couplings using single snap-on coupling are robust, safe and fit two different plug-in profiles, the EURO- profile and the ARO profile.



Technical data

Industry	Industrial
Silicon	silicone-free
Port D	NW 7,2
Port G	G 3/8
Compressed air connection type	Coupling plug
Nominal width NW	7.2 mm
Min. working pressure	0 bar
Max. working pressure	35 bar
Min. ambient temperature	-20 °C
Max. ambient temperature	100 °C
Min. medium temperature	-20 °C
Max. medium temperature	100 °C
Medium	Compressed air
Delivery unit	10 piece
Weight per piece	0.024 kg
Housing material	Brass
Surface housing	nickel-plated
	R412028884

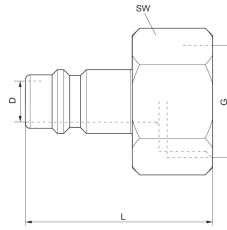
Dimensions

Coupling plug with internal thread

R412028884

Series CP1

2024-10-23



Part No.	Port G	Nominal width NW	L	SW
R412028883	G 1/4	7,2 mm	32	17
R412028884	G 3/8	7,2 mm	32	19
1823373081	G 1/4	7,8 mm	33	17
1823373082	G 3/8	7,8 mm	33	19
R412028889	G 1/2	7,8 mm	35	24