

3/2-directional valve, Series CD04

2023-09-07

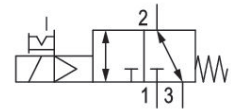
R412012698

Series CD04

Qn max. 900 l/min

3/2, 5/2, 5/3 spool valves with metal housing

For demanding environments



Technical data

Industry

Industrial

Activation

Electrically

Valve type

Spool valve, positive overlapping

Switching principle

3/2, with spring return

Valve function

NC

NO

Sealing principle

soft seal

Connection type

Pipe connection

Manual override

with detent

Standard compressed air connection

according to ANSI B1.20.3

Compressed air connection input

1/8-27 PTF

Compressed air connection output

1/8-27 PTF

Compressed air connection, exhaust

1/8-27 PTF

Compressed air connection pilot exhaust

M5

Nominal flow Qn

900 l/min

Nominal flow Qn 1 to 2

900 l/min

Nominal flow Qn 2 to 3

900 l/min

3/2-directional valve, Series CD04

2023-09-07

R412012698

| | |
|---------------------------------------|-----------------------|
| Working pressure min. | 3 bar |
| Working pressure max | 10 bar |
| Control pressure min. | 3 bar |
| Control pressure max. | 10 bar |
| Electrical connection type | Plug |
| Electrical connection size | EN 175301-803, form B |
| Electrical connection number of poles | 3-pin |
| Connector standard | EN 175301-803:2006 |
| Protection class with connection | IP65 |
| Operational voltage | 110 V AC |
| Operational voltage AC at 50 Hz | 110 V |
| Voltage tolerance AC 50 Hz | -20% / +10% |
| Operational voltage AC at 60 Hz | 110 V |
| Voltage tolerance AC 60 Hz | -10% / +20% |
| Pilot | Internal |
| Coil width | 22 mm |
| Pilot valve width | 26 mm |
| Compatibility index | 14 |
| Holding power AC 50 Hz | 8.3 VA |
| Holding power AC 60 Hz | 7.2 VA |
| Switch-on power AC 50 Hz | 10.8 VA |
| Switch-on power AC 60 Hz | 9.5 VA |
| Duty cycle | 100 % |
| Typ. switch-on time | 13 ms |
| Typ. switch-off time | 27 ms |
| Min. ambient temperature | -15 °C |
| Max. ambient temperature | 50 °C |
| Min. medium temperature | -15 °C |
| Max. medium temperature | 50 °C |
| Medium | Compressed air |
| Oil content of compressed air min. | 0 mg/m ³ |
| Oil content of compressed air max. | 1 mg/m ³ |
| Max. particle size | 50 µm |
| Weight | 0.32 kg |

Material

| | |
|------------------|---|
| Housing material | Die cast zinc Polyamide fiber-glass reinforced |
| Seal material | Acrylonitrile butadiene rubber |
| Part No. | R412012698 |

Technical information

option valve: The input and output compressed air connections can be exchanged. The valve can thereby be used in the NC or NO operating mode.

The min. control pressure must be adhered to, since otherwise faulty switching and valve failure may result!

The pressure dew point must be at least 15 °C less than ambient and medium temperature and may not exceed 3 °C.

The oil content of compressed air must remain constant during the life cycle.

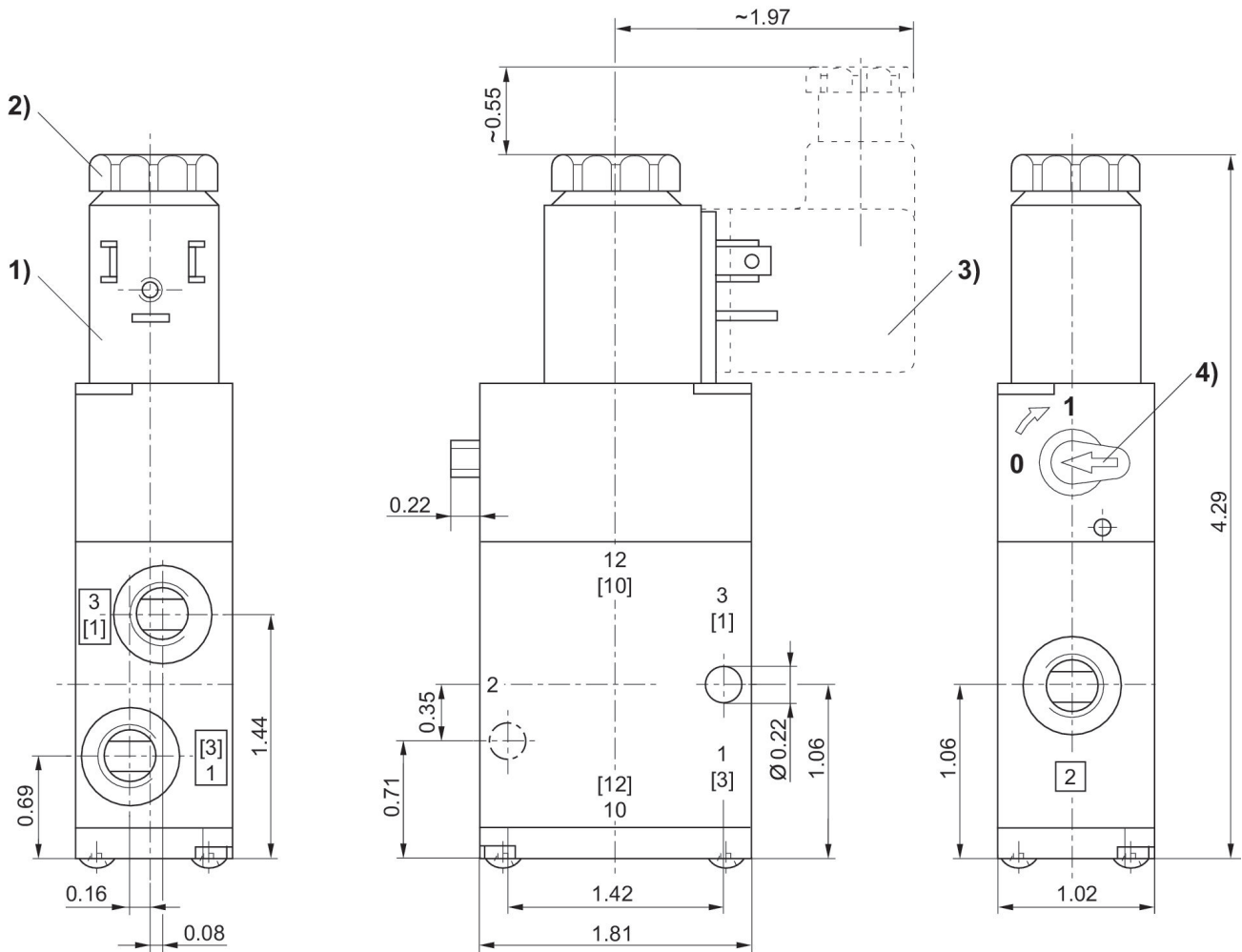
Use only the approved oils from AVENTICS. Further information can be found in the "Technical information" document (available in <https://www.emerson.com/en-us/support>).

3/2-directional valve, Series CD04

2023-09-07

R412012698

Dimensions in inches



- 1) Coil can be rotated at 90° intervals
- 2) After removal of cap M5 internal thread
- 3) Valve plug connector can be plugged at 180° intervals
- 4) Manual override