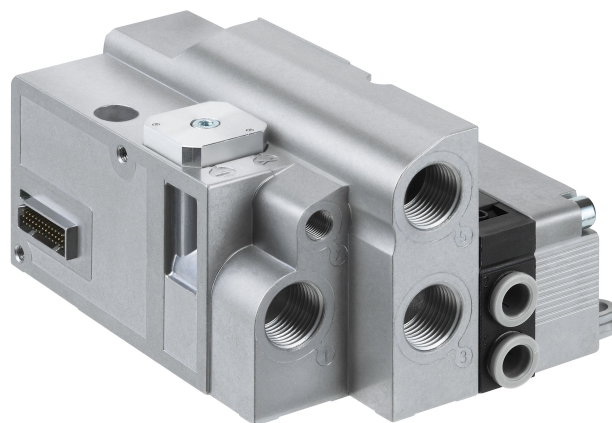


# CKD kit, Series HF02-LG

R412009658



## Technical data

**Industry**  
Industrial

**Type**  
Assembly kit

**Type**  
Base plate for a single or double solenoid valve

**Compressed air connection input**  
G 1/2

**Compressed air connection output**  
Ø 10

**Port exhaust**  
G 1/2

**Scope of delivery**  
2 x end plates with push-in fittings 1, 3, 5, R, X and 1 x base plate with push-in fittings 2, 4, Ø10

**Nominal flow Qn**  
1400 l/min

**Working pressure min.**  
-0.9 bar

**Working pressure max**  
10 bar

**Exhaust type**  
Ports separated

**Exhaust (3,5)**  
With directional exhaust (3/5)

**Compressed air connection 12**  
G 1/8

**Compressed air connection 14**  
G 1/8

**Pilot control exhaust**  
With collective pilot air exhaust

**Control pressure min.**  
2.5 bar

**Control pressure max.**  
10 bar

**Min. ambient temperature**  
0 °C

**Max. ambient temperature**  
50 °C

Min. medium temperature  
0 °C  
Max. medium temperature  
50 °C

Medium  
Compressed air

Max. number of valve positions  
1  
Grid dimension  
19.8 mm

Tightening torque for mounting screws  
1.1 Nm

## Material

Material base plate  
Aluminum  
Material push-in fitting  
Brass  
Surface push-in fitting  
nickel-plated

Seal material  
Nitrile rubber  
Part No.  
R412009658

## Technical information

The internal and external pneumatic pilots can be adjusted using the change-over plate on the left end plate. For internal pilot, working pressure is limited to  $[[2,5]bar]...[[10] bar]$ .

The min. control pressure must be adhered to, since otherwise faulty switching and valve failure may result!

The pressure dew point must be at least 15 °C under ambient and medium temperature and may not exceed 3 °C .

The oil content of compressed air must remain constant during the life cycle.

Use only the approved oils from AVENTICS. Further information can be found in the "Technical information" document (available in <https://www.emerson.com/en-us/support>).