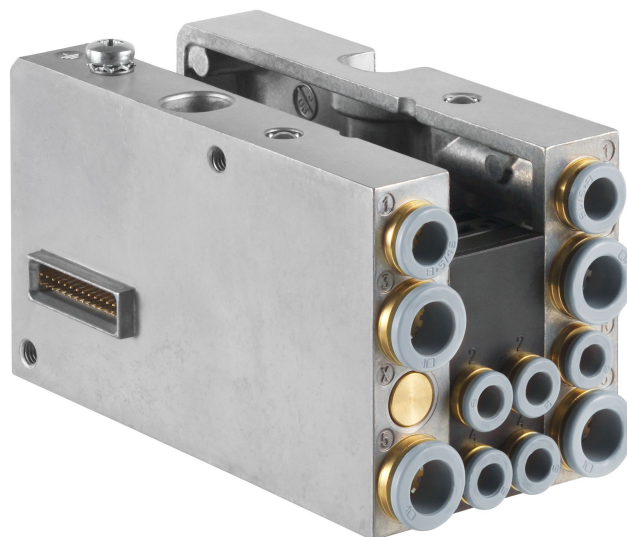


CKD kit, Series HF04

R412008549



Technical data

Industry
Industrial

Type
Assembly kit

Type
Base plate for a single or double solenoid valve

Compressed air connection input
3/8"

Compressed air connection output
M7

DC operating voltage
24 V

Voltage tolerance DC
-10% / +10%

Type
Multipole

Pilot
Internal

Working pressure min.
3 bar

Port exhaust
3/8"

Exhaust type
Ports separated

Exhaust (3,5)
With directional exhaust (3/5)

Compressed air connection 12
Ø 1/4"

Pilot control exhaust
With collective pilot air exhaust

Working pressure max
8 bar

Min. ambient temperature
-5 °C

Max. ambient temperature
50 °C

Min. medium temperature
0 °C

Max. medium temperature
50 °C

Medium

Compressed air

Electrical connection

Plug

Electrical connection

D-Sub

Electrical connection

25-pin

electr. connection

D-Sub plug, 25-pin, on the side

Link structure CMS

Max. number of valve positions

2

Grid dimension

11.8 mm

Mounting screw

cross recessed DIN EN ISO 4757-Z0

Tightening torque for mounting screws

0.2 Nm

Rail mounting DIN EN 60715

TH35 x 15

Material

Material base plate

Polyamide

Material push-in fitting

Brass

Surface push-in fitting

nickel-plated

Seal material

Acrylonitrile butadiene rubber

Screws material

Steel

Material tie-rod

Aluminum

Part No.

R412008549

Technical information

Double base plate principle

The min. control pressure must be adhered to, since otherwise faulty switching and valve failure may result!

The pressure dew point must be at least 15 °C under ambient and medium temperature and may not exceed 3 °C .

The oil content of compressed air must remain constant during the life cycle.

Use only the approved oils from AVENTICS. Further information can be found in the "Technical information" document (available in <https://www.emerson.com/en-us/support>).