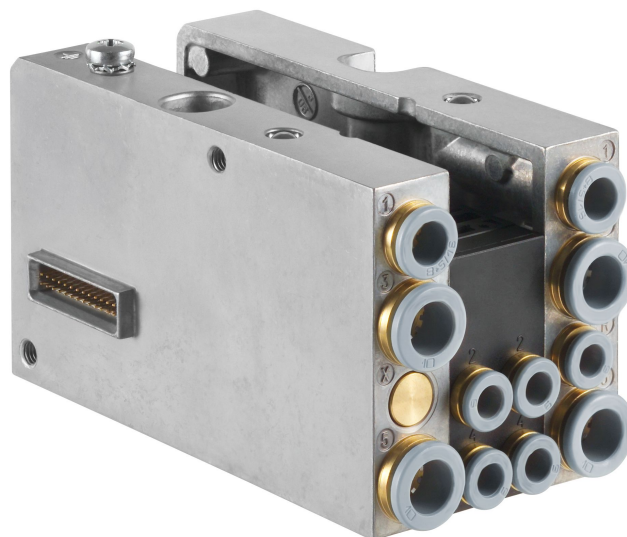


# CKD kit, Series HF04

## R412008547



### Technical data

**Industry**  
Industrial

**Type**  
Assembly kit

**Type**  
Base plate for a single or double solenoid valve

**Compressed air connection input**  
Ø 8

**Compressed air connection output**  
M7

**DC operating voltage**  
24 V

**Voltage tolerance DC**  
-10% / +10%

**Type**  
Multipole

**Pilot**  
Internal

**Working pressure min.**  
3 bar

**Port exhaust**  
Ø 10

**Exhaust type**  
Ports separated

**Exhaust (3,5)**  
With directional exhaust (3/5)

**Compressed air connection 12**  
Ø 6

**Pilot control exhaust**  
With collective pilot air exhaust

**Working pressure max**  
8 bar

**Min. ambient temperature**  
-5 °C

**Max. ambient temperature**  
50 °C

**Min. medium temperature**  
0 °C

**Max. medium temperature**  
50 °C

## Medium

Compressed air

Electrical connection

Plug

Electrical connection

D-Sub

Electrical connection

25-pin

electr. connection

D-Sub plug, 25-pin, on the side

Link structure CMS

Max. number of valve positions

2

Grid dimension

11.8 mm

Mounting screw

cross recessed DIN EN ISO 4757-Z0

Tightening torque for mounting screws

0.2 Nm

Rail mounting DIN EN 60715

TH35 x 15

## Material

Material base plate

Polyamide

Material push-in fitting

Brass

Surface push-in fitting

nickel-plated

Seal material

Acrylonitrile butadiene rubber

Screws material

Steel

Material tie-rod

Aluminum

Part No.

R412008547

## Technical information

Double base plate principle

The min. control pressure must be adhered to, since otherwise faulty switching and valve failure may result!

The pressure dew point must be at least 15 °C under ambient and medium temperature and may not exceed 3 °C .

The oil content of compressed air must remain constant during the life cycle.

Use only the approved oils from AVENTICS. Further information can be found in the "Technical information" document (available in <https://www.emerson.com/en-us/support>).