

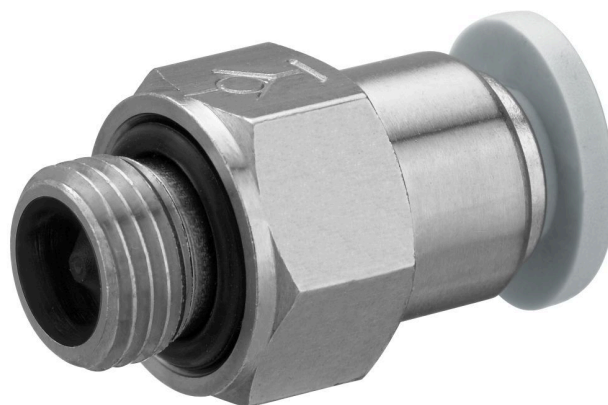
Blocking valve, Series QR1-AAN

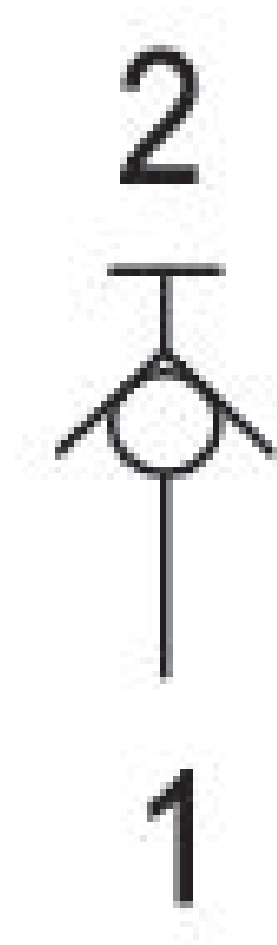
R412005529

General series information

AVENTICS Series QR1 Non-return and check valves

- AVENTICS Series QR1 Non-return and check valve are designed for safety-relevant processes, the valves enable automatic blocking of the air supply to immediately stop the working stroke.





Technical data

Industry	Industrial
Compressed air connection 1	G 1/4
Compressed air connection type 1	External thread
Compressed air connection type 2	push-in fitting
Type	Poppet valve
Compressed air connection 2	Ø 8
Nominal flow Qn 1 to 2	900 l/min
Working pressure min.	0 bar
Working pressure max	10 bar
Min. ambient temperature	0 °C
Max. ambient temperature	60 °C
Min. medium temperature	0 °C
Max. medium temperature	60 °C
Medium	Compressed air
Delivery unit	10 piece
Weight	0.02 kg

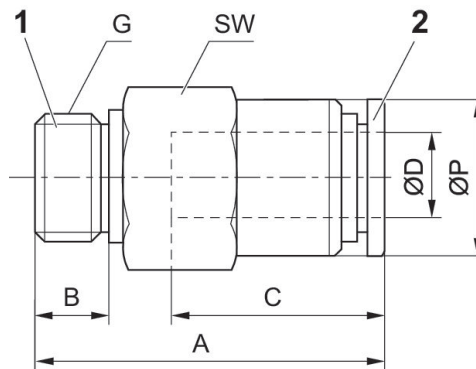
Material

Housing material	Brass
Surface housing	nickel-plated
Seal material	Acrylonitrile butadiene rubber
Material release ring	Polyoxymethylene
Part No.	R412005529

Technical information

When connecting/disconnecting the compressed air tubing and shut-off valve, the flow is released/ blocked.

Dimensions



Part No.	G	Ø D	A	B	C	SW	Ø P
R412005526	G 1/8	Ø 4	26.6	5	16	14	10
R412005527	G 1/4	Ø 6	26.9	5	17	14	12
R412005528	G 1/8	Ø 6	29.4	6	17	17	13
R412005529	G 1/8	Ø 8	33.8	6	18.5	17	14