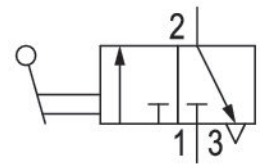
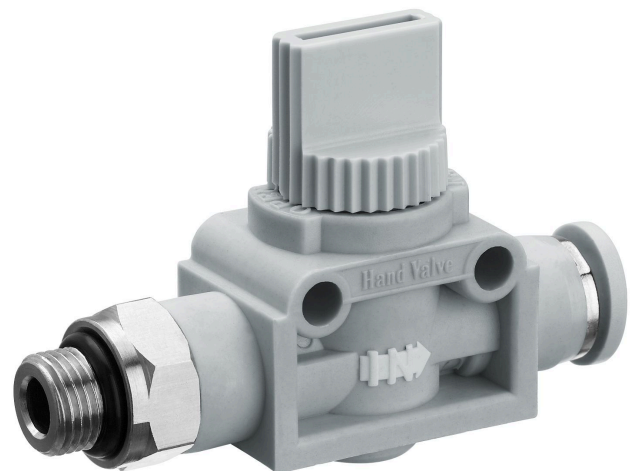


# Series QR1-AGS

R412005475

General series information  
AVENTICS Series QR1 Shut-off valves

- AVENTICS Series QR1 Shut-off valve are designed for safety-relevant processes, the valves enable manual blocking of the air supply to immediately stop the working stroke.



## Technical data

Industry	Industrial
Type	Poppet valve
Medium	Compressed air
Compressed air connection 1	G 1/4
Compressed air connection type 1	External thread
Compressed air connection 2	Ø 12
Compressed air connection type 2	push-in fitting
Min. ambient temperature	-20 °C
Max. ambient temperature	80 °C
Min. medium temperature	-20 °C
Max. medium temperature	80 °C
Working pressure min.	0 bar
Working pressure max	16 bar
Nominal flow Qn 1 to 2	1600 l/min
Delivery unit	5 piece

Weight 0.063 kg

### Material

Housing material	Polyamide
Seal material	Acrylonitrile butadiene rubber
Material release ring	Polyamide
Material hand lever	Polyamide
Part No.	R412005475

### Technical information

Versions with connection threads can be rotated by 360°.

Flow direction: 1 to 2

### Dimensions in mm

