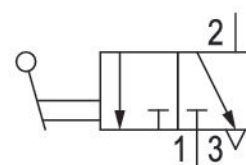
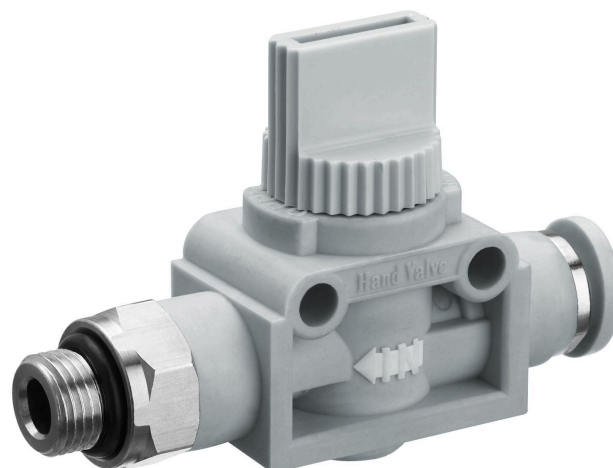


Series QR1-ASG

R412005462

General series information
AVENTICS Series QR1 Shut-off valves

- AVENTICS Series QR1 Shut-off valve are designed for safety-relevant processes, the valves enable manual blocking of the air supply to immediately stop the working stroke.



Technical data

Industry	Industrial
Type	Poppet valve
Medium	Compressed air
Compressed air connection 1	G 1/4
Compressed air connection type 1	External thread
Compressed air connection 2	Ø 8
Compressed air connection type 2	push-in fitting
Min. ambient temperature	-20 °C
Max. ambient temperature	80 °C
Min. medium temperature	-20 °C
Max. medium temperature	80 °C
Working pressure min.	0 bar
Working pressure max	16 bar
Flow Qn	550 l/min
Delivery unit	5 piece

Weight 0.038 kg

Material

Housing material	Polyamide
Seal material	Acrylonitrile butadiene rubber
Material release ring	Polyamide
Material hand lever	Polyamide
Part No.	R412005462

Technical information

Versions with connection threads can be rotated by 360°.

Flow direction: 2 to 1

Dimensions in mm

