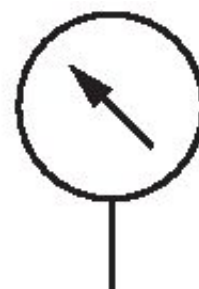


Pressure gauge, Series PG1-SNL

R412004987

General series information Series PG1 Pressure gauges

- With the AVENTICS Series PG1 you can visualize and rely on a clear air pressure display for each of your pneumatic circuits. In addition to the parameters for controlling the air quality, supplying sufficient pressure is the basis for operating a reliable system within machine automation. Emerson offers mechanical pressure gauges that can be integrated into machines for diverse applications and air preparation systems. The specifications of the individual versions in the universal PG1 Series provide a selection of options, such as appearance, material, or the required type of mounting.



Technical data

Industry

Pressure gauge version

Standardization

Class

Compressed air connection

Nominal diameter

Scale value

Range of application min.

Range of application max.

Display range min.

Display range max.

Industrial

Bourdon tube pressure gauge

Back port

EN 837-1

1,6

G 1/4

50 mm

0.5

0 bar

12 bar

0 bar

16 bar

Working pressure min.	0 bar
Working pressure max	16 bar
Min. ambient temperature	-40 °C
Max. ambient temperature	60 °C
Medium	Compressed air
Background color	Black
Main scale unit (outside)	bar
Main scale color (outside)	Green
Secondary scale unit (inside)	psi
Secondary scale color (inside)	White
Pointer color	White
Weight	0.09 kg

Material

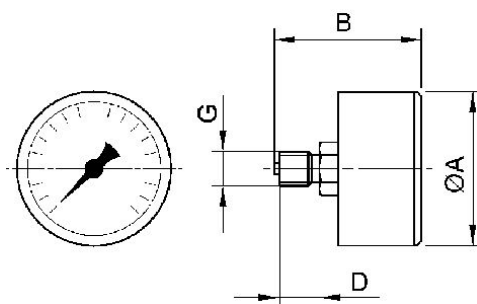
Housing material	Acrylonitrile butadiene styrene
Material viewing window	Mineral glass
Material thread	Brass
	R412004987

Technical information

Suitable for use in Ex zones 1, 2, 21, 22.

Order axial seal separately

Dimensions



Dimensions in mm

Part No.	G	Nominal diameter	Ø A	B	D
R412004987	G 1/4	63 mm	63	48.3	13