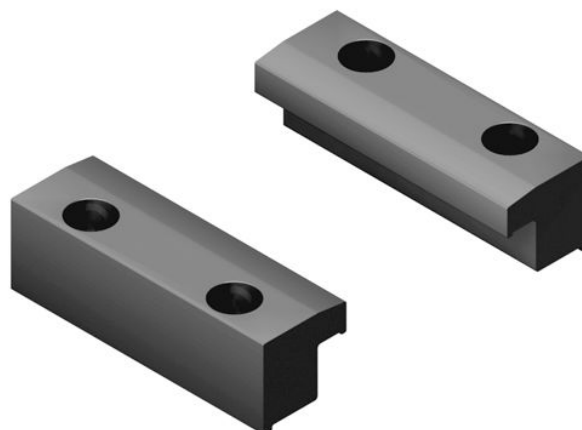


Escuadras bajas AVENTICS



Datos técnicos

Sector

Industria

Para serie

CKP-25

CKP-32

MSC-25

Material

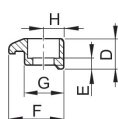
Material

Aluminio

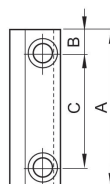
N° de material

R037541026

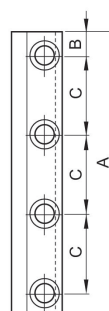
piezas de sujeción



Typ 1



Typ 2



Typ 3

N° de material	1)	Typ	A	B	C	D	E	F	G
R037531000	M4	1	25	–	–	9	4.6	14.5	10.5
R037531002	M4	3	87	6	25	9	4.6	14.5	10.5
R037531003	M4	3	107	8.5	30	9	4.6	14.5	10.5

piezas de sujeción

R037541026

Fijaciones
por pie

2024-08-29

N° de material	1)	Typ	A	B	C	D	E	F	G
R037531032	M4	2	72	11	50	9	4.6	14.5	10.5
R037531033	M4	2	62	11	40	9	4.6	14.5	10.5
R037531026	M4	3	77	8.5	20	9	4.6	14.5	10.5
R037541002	M5	3	107	8.5	30	11.5	4.8	19.3	14
R037541026	M5	3	77	8.5	20	11.5	4.8	19.3	14
R037551000	M6	1	25	–	–	11.5	5.3	19.3	14
R037551002	M6	3	142	11	40	11.5	5.3	19.3	14
R037551033	M6	2	72	11	50	11.5	5.3	19.3	14
R037551034	M6	2	62	11	40	11.5	5.3	19.3	14
R037551023	M6	2	47	8.5	30	11.5	5.3	19.3	14

N° de material	H
R037531000	5
R037531002	5
R037531003	5
R037531032	5
R037531033	5
R037531026	5
R037541002	7
R037541026	7
R037551000	7
R037551002	7
R037551033	7
R037551034	7
R037551023	7

1) avellanado para tornillo