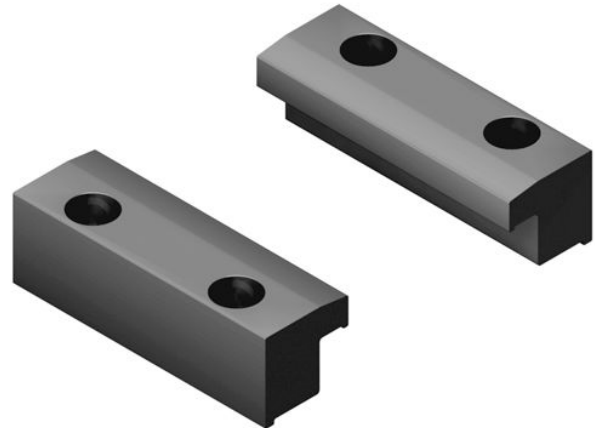


Escuadras bajas AVENTICS



Datos técnicos

Sector

Industria

Para serie

CKP-16

MSC-20

Material

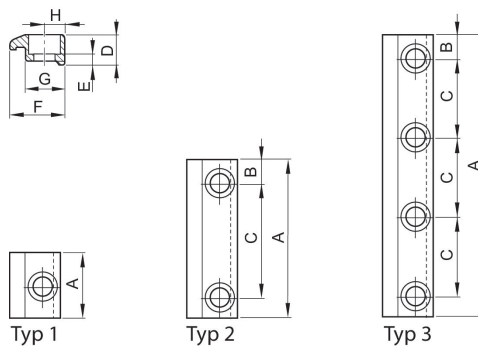
Material

Aluminio

N° de material

R037531032

piezas de sujeción



| N° de material | 1) | Typ | A | B | C | D | E | F | G |
|----------------|----|-----|-----|-----|----|---|-----|------|------|
| R037531000 | M4 | 1 | 25 | – | – | 9 | 4.6 | 14.5 | 10.5 |
| R037531002 | M4 | 3 | 87 | 6 | 25 | 9 | 4.6 | 14.5 | 10.5 |
| R037531003 | M4 | 3 | 107 | 8.5 | 30 | 9 | 4.6 | 14.5 | 10.5 |
| R037531032 | M4 | 2 | 72 | 11 | 50 | 9 | 4.6 | 14.5 | 10.5 |

piezas de sujeción

R037531032

Fijaciones
por pie

2024-08-29

| N° de material | 1) | Typ | A | B | C | D | E | F | G |
|----------------|----|-----|-----|-----|----|------|-----|------|------|
| R037531033 | M4 | 2 | 62 | 11 | 40 | 9 | 4.6 | 14.5 | 10.5 |
| R037531026 | M4 | 3 | 77 | 8.5 | 20 | 9 | 4.6 | 14.5 | 10.5 |
| R037541002 | M5 | 3 | 107 | 8.5 | 30 | 11.5 | 4.8 | 19.3 | 14 |
| R037541026 | M5 | 3 | 77 | 8.5 | 20 | 11.5 | 4.8 | 19.3 | 14 |
| R037551000 | M6 | 1 | 25 | – | – | 11.5 | 5.3 | 19.3 | 14 |
| R037551002 | M6 | 3 | 142 | 11 | 40 | 11.5 | 5.3 | 19.3 | 14 |
| R037551033 | M6 | 2 | 72 | 11 | 50 | 11.5 | 5.3 | 19.3 | 14 |
| R037551034 | M6 | 2 | 62 | 11 | 40 | 11.5 | 5.3 | 19.3 | 14 |
| R037551023 | M6 | 2 | 47 | 8.5 | 30 | 11.5 | 5.3 | 19.3 | 14 |

| N° de material | H |
|----------------|---|
| R037531000 | 5 |
| R037531002 | 5 |
| R037531003 | 5 |
| R037531032 | 5 |
| R037531033 | 5 |
| R037531026 | 5 |
| R037541002 | 7 |
| R037541026 | 7 |
| R037551000 | 7 |
| R037551002 | 7 |
| R037551033 | 7 |
| R037551034 | 7 |
| R037551023 | 7 |

1) avellanado para tornillo