

# Base plate, series XV05, working connections on the side

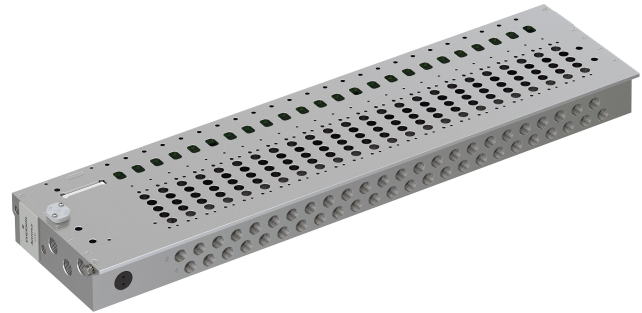
A573A00000013xx

2025-03-19

- An example configuration is illustrated. The delivered product may thus deviate from the illustration.
- The data sheet shows technical data, materials and those dimensions in mm that are independent of the number of valve positions. Use our Internet configurator to order base plates with the number of valve positions you require.

## Series XV05

The AVENTICS XV05 series provides a reliable basis for both compact handling systems and complex automation solutions. It comprises a wide range of valve functions and accessories as well as the required electrical connectivity for all requirements in factory automation and other industries. The associated XVES Connectivity module allows for connection options ranging from simple direct control via D-SUB or terminal strips to a variety of fieldbus protocols. Our one-of-a-kind online configurator makes it easy to configure the complete valve system, including accessories, so that it is perfectly tailored to your application needs.



## Technical data

Industry	Industrial
Type	Base plate
Min. working pressure	-0.95 bar
Max. working pressure	8 bar
Min. ambient temperature	-10 °C
Max. ambient temperature	50 °C
Min. medium temperature	-10 °C
Max. medium temperature	50 °C
Medium	Compressed air
Number of valve positions	42

## Material

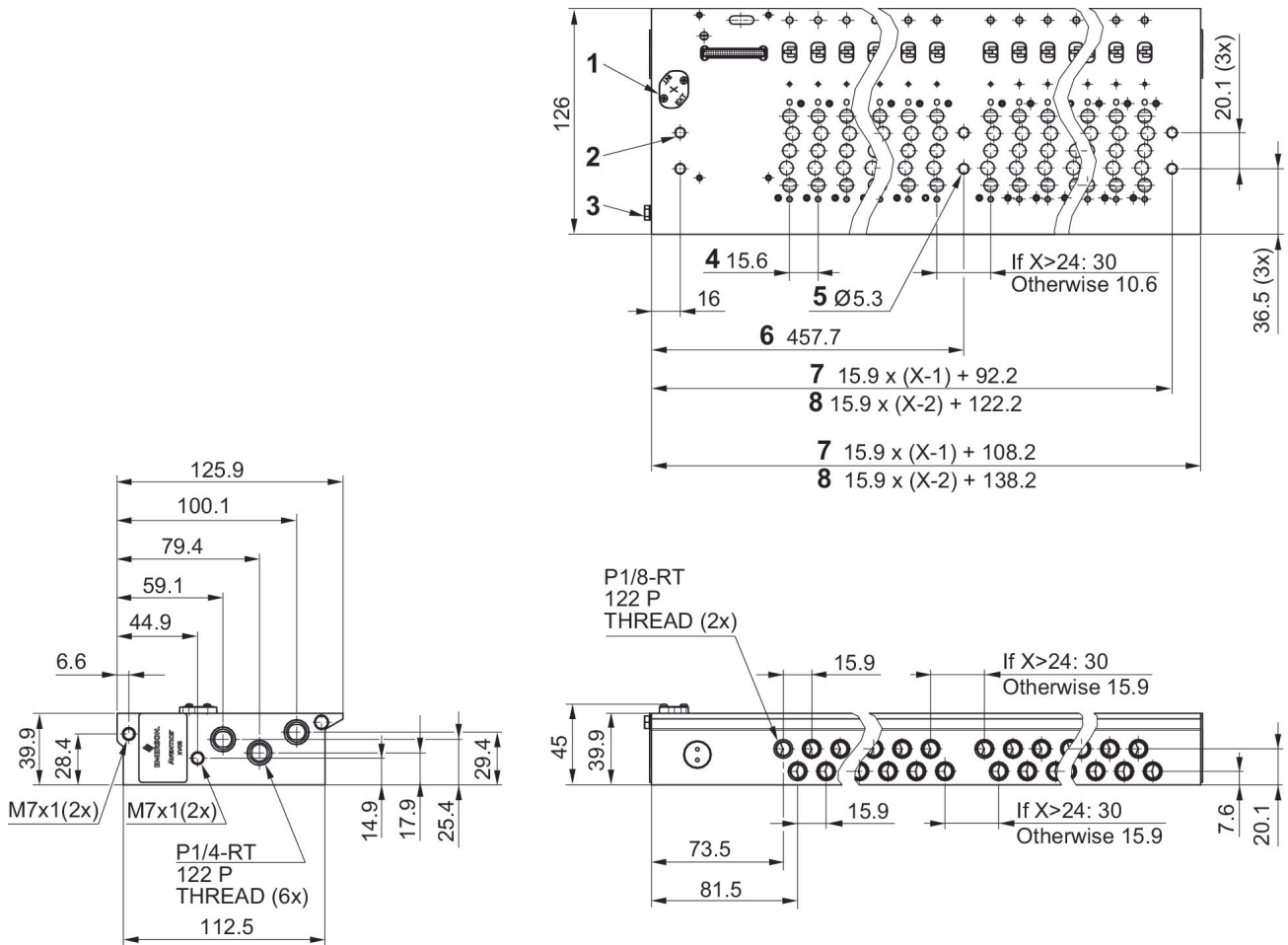
Housing material	Aluminum, anodized
Seal material	Hydrogenated nitrile butadiene rubber
Screws material	Stainless Steel
Part No.	A573A00000013xx

# Base plate, series XV05, working connections on the side

A573A00000013xx

2025-03-19

## Dimensions in mm



- 1) Mounting screw for the control plate
  - 2) Mounting hole  $\varnothing$  5.3 (4x)
  - 3) PE = Ground
  - 4) Station pitch
  - 5) Additional mounting holes for 25 stations or more
  - 6) For base plates with up to 24 valves
  - 7) For base plates with more than 25 valves
- X = number of valve positions