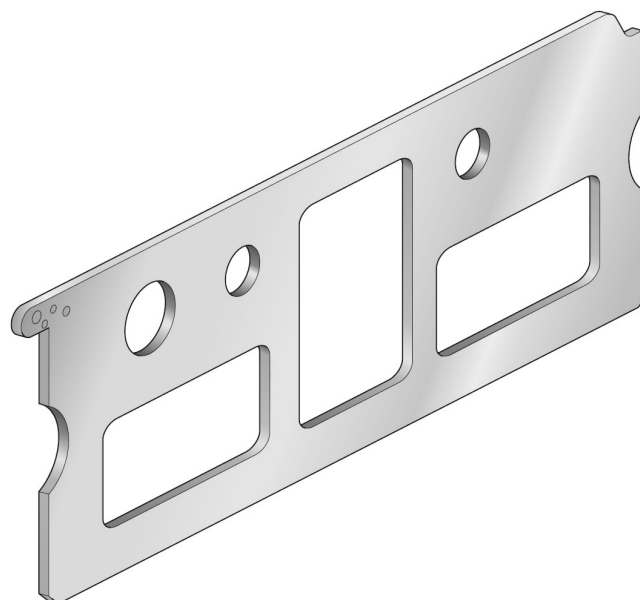


Transition plate, Series 355, ISO 2

88135508



Technical data

For series
355

Type
Port 1, 3, 5 and 12 or 14 open

Min. ambient temperature
-10 °C

Min. medium temperature
-10 °C

Max. ambient temperature
60 °C

Max. medium temperature
60 °C

Material

Material base plate
Galvanized Steel

Part No.
88135508

Technical information

The min. control pressure must be adhered to, since otherwise faulty switching and valve failure may result!

The pressure dew point must be at least 15 °C under ambient and medium temperature and may not exceed 3 °C .

Dimensions

