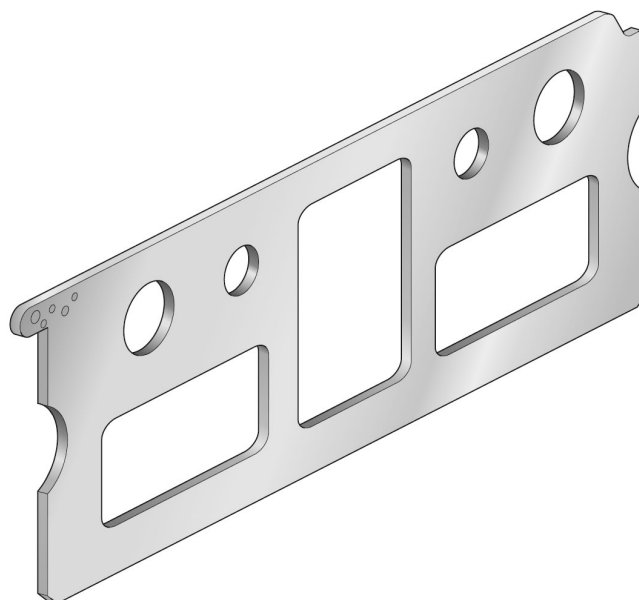


# Transition plate, Series 355, ISO 1

88135504



## Technical data

For series  
355

Frame size  
ISO 1

Min. ambient temperature  
-10 °C

Max. ambient temperature  
60 °C

Type  
Port 1, 3, 5, 12, 14 open

Min. medium temperature  
-10 °C

Max. medium temperature  
60 °C

## Material

Material base plate  
Galvanized Steel

Part No.  
88135504

## Technical information

The min. control pressure must be adhered to, since otherwise faulty switching and valve failure may result!

The pressure dew point must be at least 15 °C under ambient and medium temperature and may not exceed 3 °C .

## Dimensions

