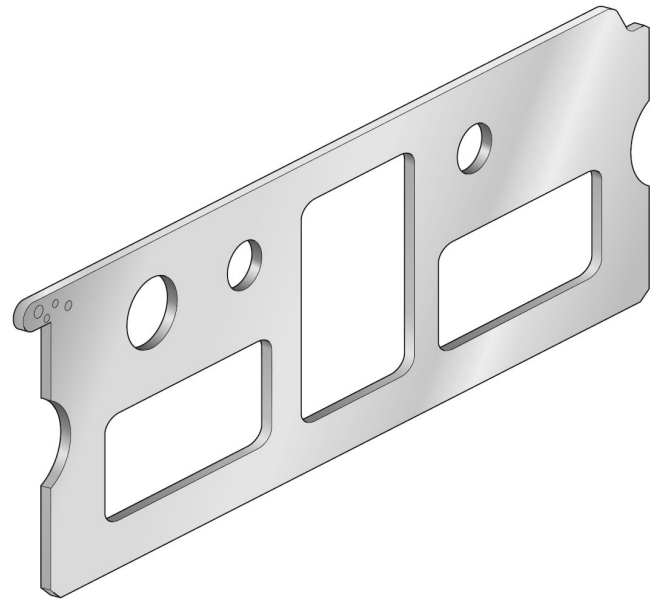


# Transition plate, Series 355, ISO 1

2024-08-15

88135503

---



## Technical data

For series	355
Type	Port 1, 3, 5 and 12 or 14 open
Frame size	ISO 1
Min. ambient temperature	-10 °C
Max. ambient temperature	60 °C
Min. medium temperature	-10 °C
Max. medium temperature	60 °C

## Material

Material base plate	Galvanized Steel
Part No.	88135503

## Technical information

The min. control pressure must be adhered to, since otherwise faulty switching and valve failure may result!

The pressure dew point must be at least 15 °C less than ambient and medium temperature and may not exceed 3 °C.

## Dimensions

