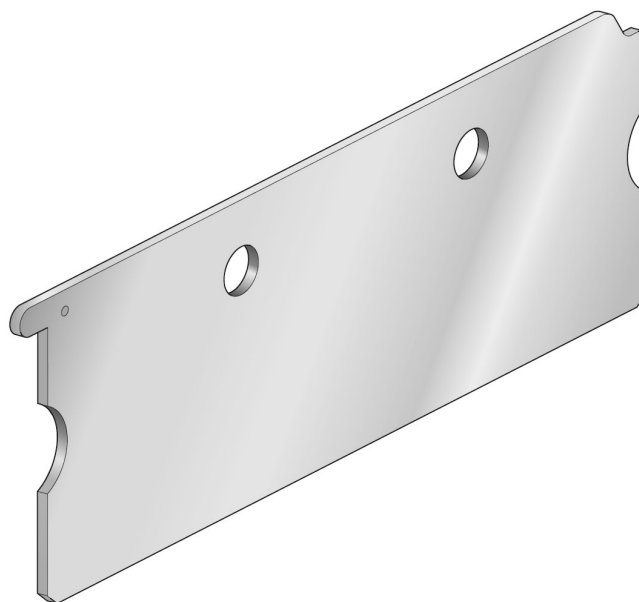


Transition plate, Series 355, ISO 1

88135501



Technical data

For series
355

Type
Blanking plate

Frame size
ISO 1

Min. medium temperature
-10 °C

Min. ambient temperature
-10 °C

Max. medium temperature
60 °C

Max. ambient temperature
60 °C

Material

Material base plate
Galvanized Steel

Part No.
88135501

Technical information

The min. control pressure must be adhered to, since otherwise faulty switching and valve failure may result!

The pressure dew point must be at least 15 °C under ambient and medium temperature and may not exceed 3 °C .

Dimensions

