

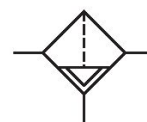
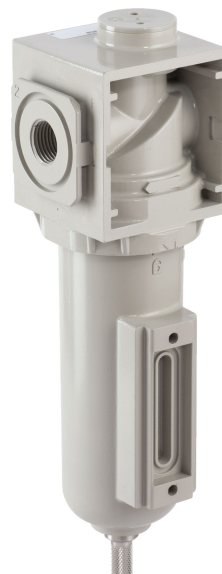
# Filter, Series 647

2023-11-28

8647ABBK6JA000Q

## Series 647

The Series 647 Railway Filters are designed for the unique needs of the railway industry. The units meet railway regulations for Fire Safety (EN 45545: HL3), Shock & Vibration (EN 61373: Cat 1 Class B), and Corrosion Resistance (ISO 9227).



## Technical data

Industry	Rail
Parts	Filter
Port	1 NPT
Filter porosity	5 $\mu\text{m}$
Nominal flow Qn	4250 l/min
Condensate drain	Manual
Min. working pressure	0 bar
Max. working pressure	12 bar
Min. ambient temperature	-40 °C
Max. ambient temperature	70 °C
Medium	Compressed air
Weight	1.199 kg

## Material

Housing material	Aluminum
Seal material	Nitrile butadiene rubber
Material filter insert	Sintered polyethylene
Material condensate drain	Stainless Steel
Part No.	8647ABBK6JA000Q

## Technical information

Max. achievable compressed air class acc. to ISO 8573-1:2010 5 : 8 : 4 (5 µm filter porosity) und 6 : 8 : 4 (25µm filter porosity)

Other filter porosities on request.

# Filter, Series 647

8647ABBK6JA000Q

2023-11-28

## Dimensions in mm (inch)

