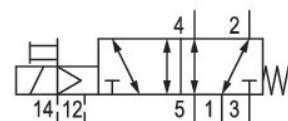
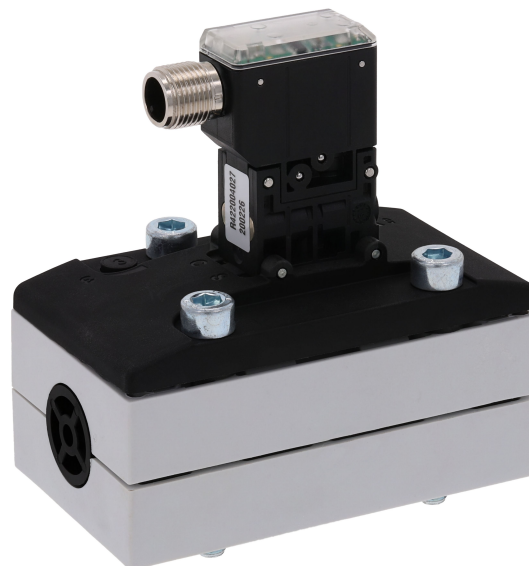


5/2-directional valve, Series 581, size 2

5812112720

ISO 5599-1, size 2, series 581

■ $Q_n = 2100 \dots 2700$ l/min



Technical data

Industry
Industrial

Activation
Electrically

Nominal flow Q_n
2700 l/min

Switching principle
5/2

Compressed air connection output
Base plate ISO 5599-1

Working pressure min.
-0.95 bar

Working pressure max.
10 bar

DC operating voltage
24 V

Voltage tolerance DC
-10% / +10%

Manual override
without detent

Electrical connection type
Plug

Electrical connection size
M12

Electr. connection
4-pin

Actuating control
Single Solenoid

Sealing principle
Soft Seal

Pilot
External

Standards
ISO 5599-1

Pilot valve width
22 mm

| | |
|---|------------------------------------|
| Valve type | Max. medium temperature |
| Spool valve | 50 °C |
| Blocking principle | Medium |
| Single base plate principle | Compressed air |
| Connection type | Max. particle size |
| Plate connection | 5 µm |
| Return | Oil content of compressed air min. |
| With spring return | 0 mg/m ³ |
| Compressed air connection input | Oil content of compressed air max. |
| Base plate ISO 5599-1 | 5 mg/m ³ |
| Compressed air connection, exhaust | Protection class with connection |
| Base plate ISO 5599-1 | IP65 |
| Compressed air connection pilot exhaust | Duty cycle |
| M5 | 100 % |
| Power consumption DC | Typ. switch-on time |
| 0.35 W | 15 ms |
| Flow conductance C | Typ. switch-off time |
| 10.8 l/(s*bar) | 35 ms |
| Frame size | mounting screws |
| ISO 2 | with hexagon socket |
| Control pressure min. | Mounting screw tightening torque |
| 3 bar | 3.5 Nm |
| Control pressure max. | Weight |
| 10 bar | 0.28 kg |
| Min. ambient temperature | Housing material |
| 0 °C | Polyamide fiber-glass reinforced |
| Max. ambient temperature | Seal material |
| 50 °C | Acrylonitrile butadiene rubber |
| Min. medium temperature | Part No. |
| 0 °C | 5812112720 |

Technical information

Switch-on power: 1 W for 40 ms

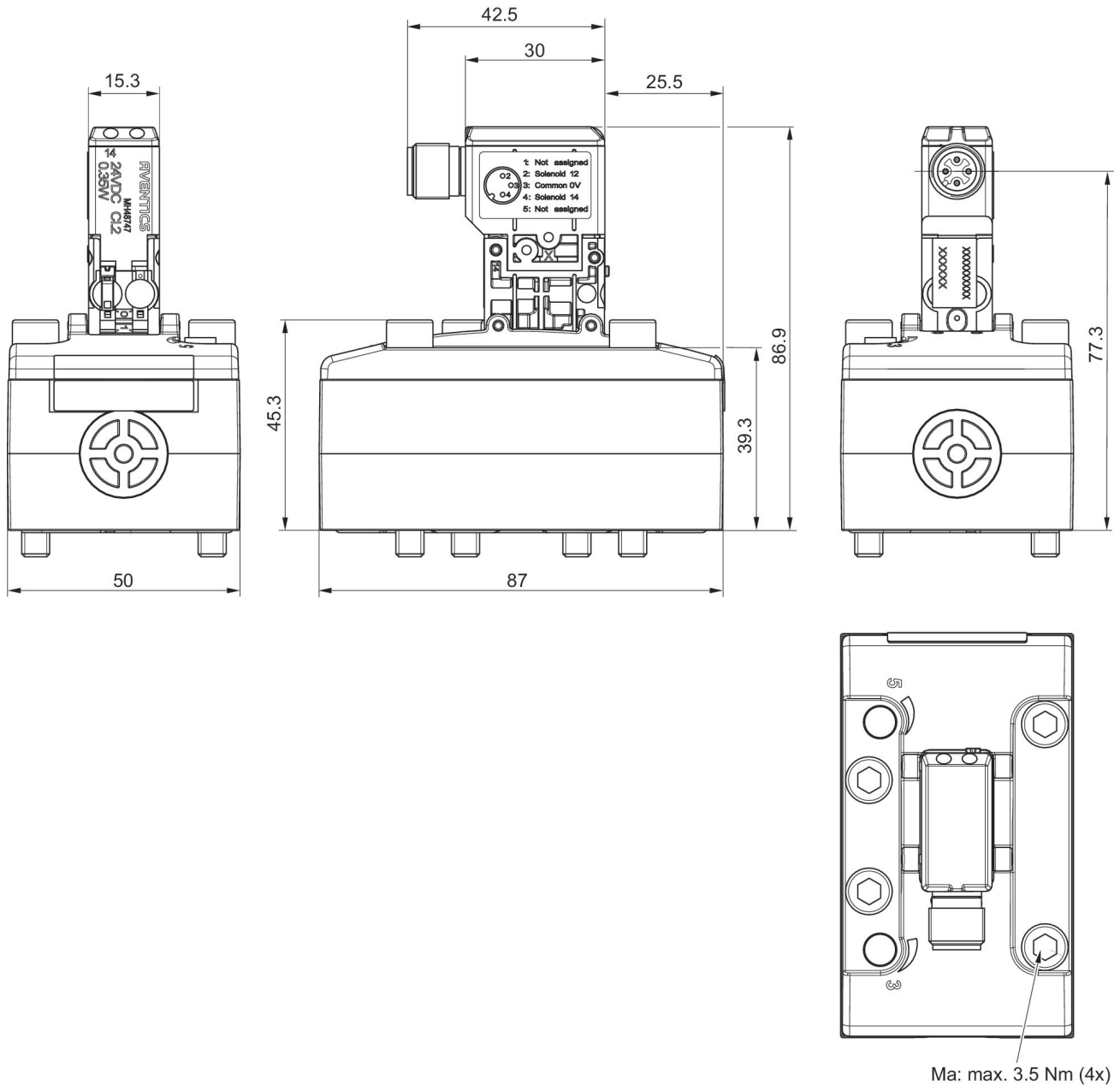
The min. control pressure must be adhered to, since otherwise faulty switching and valve failure may result!

The pressure dew point must be at least 15 °C under ambient and medium temperature and may not exceed 3 °C .

The oil content of compressed air must remain constant during the life cycle.

Use only the approved oils from AVENTICS. Further information can be found in the "Technical information" document (available in <https://www.emerson.com/en-us/support>).

Dimensions



Pin assignments



-
- 1) not assigned
 - 2) Coil 12
 - 3) 0 V DC
 - 4) Coil 14