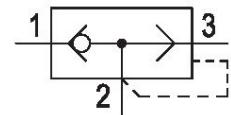


## AVENTICS Series 573 Quick exhaust valves

The AVENTICS Quick exhaust valve, Series 573 is designed for high flow applications thanks to an exhaust flow up to 12000 l/min.



### Technical data

Industry	Industrial
Type	Poppet valve
Medium	Compressed air
Compressed air connection input	M5
Compressed air connection type 1	Internal thread
Compressed air connection 2	M5
Compressed air connection type 2	Internal thread
Port 3 (Exhaust)	M5
Compressed air connection type 3	Internal thread
Nominal flow Qn 1 to 2	220 l/min
Nominal flow Qn 2 to 3	300 l/min
Min. working pressure	0.8 bar
Max. working pressure	10 bar
Min. ambient temperature	-18 °C
Max. ambient temperature	70 °C
Min. medium temperature	-18 °C
Max. medium temperature	70 °C
Weight	0.03 kg
Housing material	Brass
Surface housing	nickel-plated
Seal material	Acrylonitrile butadiene rubber
Part No.	5735040900

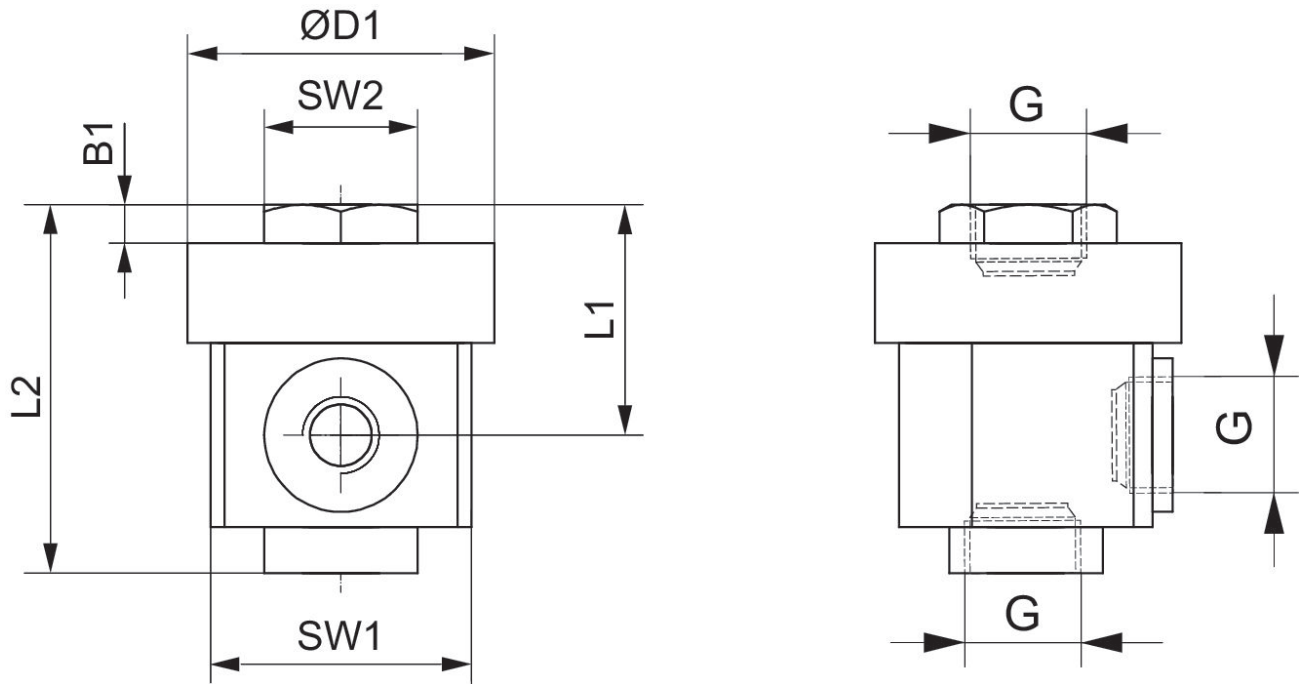
# Quick exhaust valve, Series 573

5735040900

Series 573

2024-05-28

## Dimensions



Part No.	Port G	B1	$\text{ØD1}$	L1	L2	SW1	SW2
5735040900	M5	2.5	20	17	25	17	10