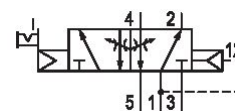
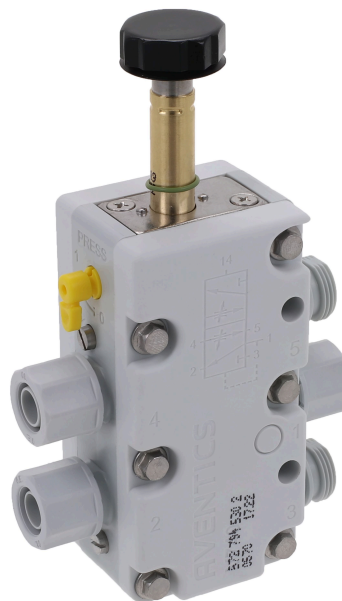


AVENTICS Series 740 Directional valves

The AVENTICS Series 740/840 feature directional valves with soft, abrasion-free diaphragm technology. The simple, reliable and robust design is suitable for all air qualities and ensures high repeatability and unsurpassed service life. Due to its high resilience, the corrosion-resistant polyamide housing is also suited for dusty and damp environments.



Technical data

Industry	Industrial
Activation	Electrically
Note	ATEX optional
Valve type	Diaphragm poppet valve
Basic valve equipment	Basic valve without coil
Switching principle	5/2, with air spring return
Sealing principle	Soft seal
Connection type	Pipe connection
Manual override	with detent without detent
Compressed air connection input	Ø 10x1
Compressed air connection output	Ø 10x1
Compressed air connection, exhaust	M14x1
Nominal flow Qn	950 l/min
Min. working pressure	2 bar
Max. working pressure	10 bar

5/2-directional valve, Series 740-CP

2023-11-27

5727945302

Protection class with connection	IP65
Pilot	Internal
Coil width	30 mm
Compatibility index	14
Duty cycle	100 %
Typ. switch-on time	17 ms
Typ. switch-off time	24 ms
Blocking principle	Plate principle
Can be assembled into blocks	Single base plate principle
Temperature resistance	Can be assembled into blocks
Corrosion resistance	-25 °C cold-resistant
Throttle	corrosion-protected
ATEX	with throttle
Min. ambient temperature	ATEX optional
Max. ambient temperature	-25 °C
Min. medium temperature	50 °C
Max. medium temperature	-25 °C
Medium	50 °C
Min. oil content of compressed air	Compressed air
Max. oil content of compressed air	0 mg/m ³
Max. particle size	5 mg/m ³
	50 µm
Weight	0.228 kg

Material

Housing material	Polyoxymethylene
Seal material	Acrylonitrile butadiene rubber
Material front plate	Polyamide
Part No.	5727945302

Technical information

Nominal flow Qn at 6 bar and $\Delta p = 1$ bar

Basic valve without coil

ATEX optional: ATEX version can be produced by combining the basic valve without coil with an ATEX coil. ATEX ID: see ATEX coils catalog page.

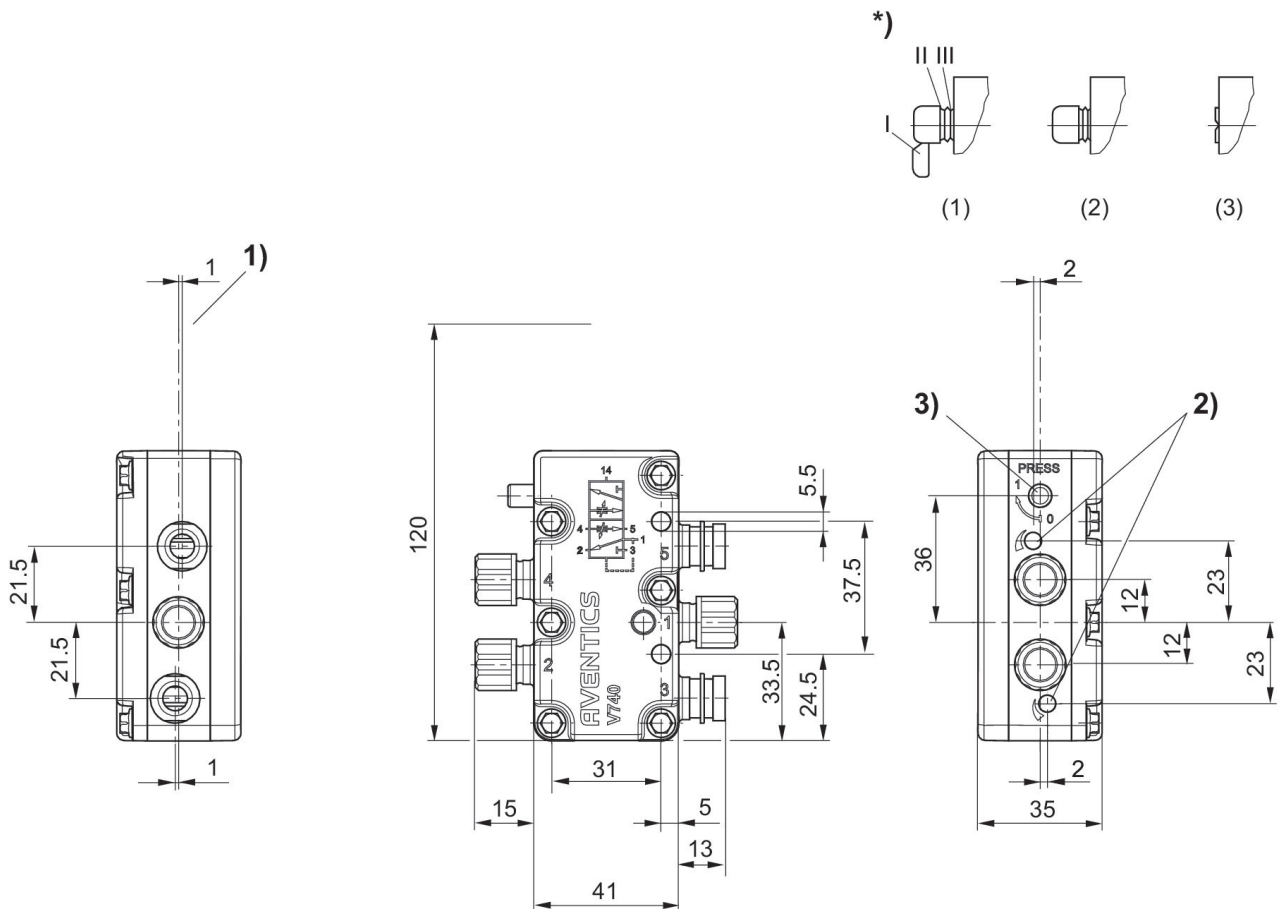
The min. control pressure must be adhered to, since otherwise faulty switching and valve failure may result!

The pressure dew point must be at least 15 °C less than ambient and medium temperature and may not exceed 3 °C.

The oil content of compressed air must remain constant during the life cycle.

Use only the approved oils from AVENTICS. Further information can be found in the "Technical information" document (available in <https://www.emerson.com/en-us/support>).

Dimensions in mm



1) M5 internal thread accessible under cap
2) Throttle screw for exhausts 5 (R) and 3 (S) (S)

5/2-directional valve, Series 740-CP

2023-11-27

5727945302

3) Manual override and position indicator

* Manual override: Manual actuation: (1) with detent - push and turn into position 1 (2) without detent - remove segment I - push only Actuation with tool: (3) with detent - remove segments up to II - push with tool and turn into position 1