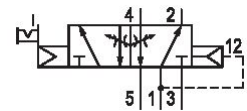


AVENTICS Series 740 Directional valves

The AVENTICS Series 740/840 feature directional valves with soft, abrasion-free diaphragm technology. The simple, reliable and robust design is suitable for all air qualities and ensures high repeatability and unsurpassed service life. Due to its high resilience, the corrosion-resistant polyamide housing is also suited for dusty and damp environments.



Technical data

| | |
|------------------------------------|-------------------------------|
| Industry | Industrial |
| Activation | Electrically |
| Note | ATEX optional |
| Valve type | Diaphragm poppet valve |
| Basic valve equipment | Basic valve without coil |
| Switching principle | 5/2, with air spring return |
| Sealing principle | Soft seal |
| Connection type | Pipe connection |
| Manual override | without detent with detent |
| Compressed air connection input | Ø 8x1 |
| Compressed air connection output | Ø 8x1 |
| Compressed air connection, exhaust | M14x1 |
| Nominal flow Qn | 700 l/min |
| Min. working pressure | 1.5 bar |
| Max. working pressure | 10 bar |

5/2-directional valve, Series 740

2023-11-27

5727405302

| | |
|------------------------------------|--|
| Protection class with connection | IP65 |
| Pilot | Internal |
| Coil width | 30 mm |
| Compatibility index | 14 |
| Duty cycle | 100 % |
| Typ. switch-on time | 17 ms |
| Typ. switch-off time | 24 ms |
| Blocking principle | Single base plate principle Plate principle |
| Can be assembled into blocks | Can be assembled into blocks |
| Temperature resistance | -25 °C cold-resistant |
| Throttle | with throttle |
| ATEX | ATEX optional |
| Min. ambient temperature | -25 °C |
| Max. ambient temperature | 50 °C |
| Min. medium temperature | -25 °C |
| Max. medium temperature | 50 °C |
| Medium | Compressed air |
| Min. oil content of compressed air | 0 mg/m ³ |
| Max. oil content of compressed air | 5 mg/m ³ |
| Max. particle size | 50 µm |
| Weight | 0.221 kg |

Material

| | |
|----------------------|--------------------------------|
| Housing material | Polyoxymethylene |
| Seal material | Acrylonitrile butadiene rubber |
| Material front plate | Polyamide |
| Part No. | 5727405302 |

Technical information

Nominal flow Q_n at 6 bar and $\Delta p = 1$ bar

Basic valve without coil

ATEX optional: ATEX version can be produced by combining the basic valve without coil with an ATEX coil. ATEX ID: see ATEX coils catalog page.

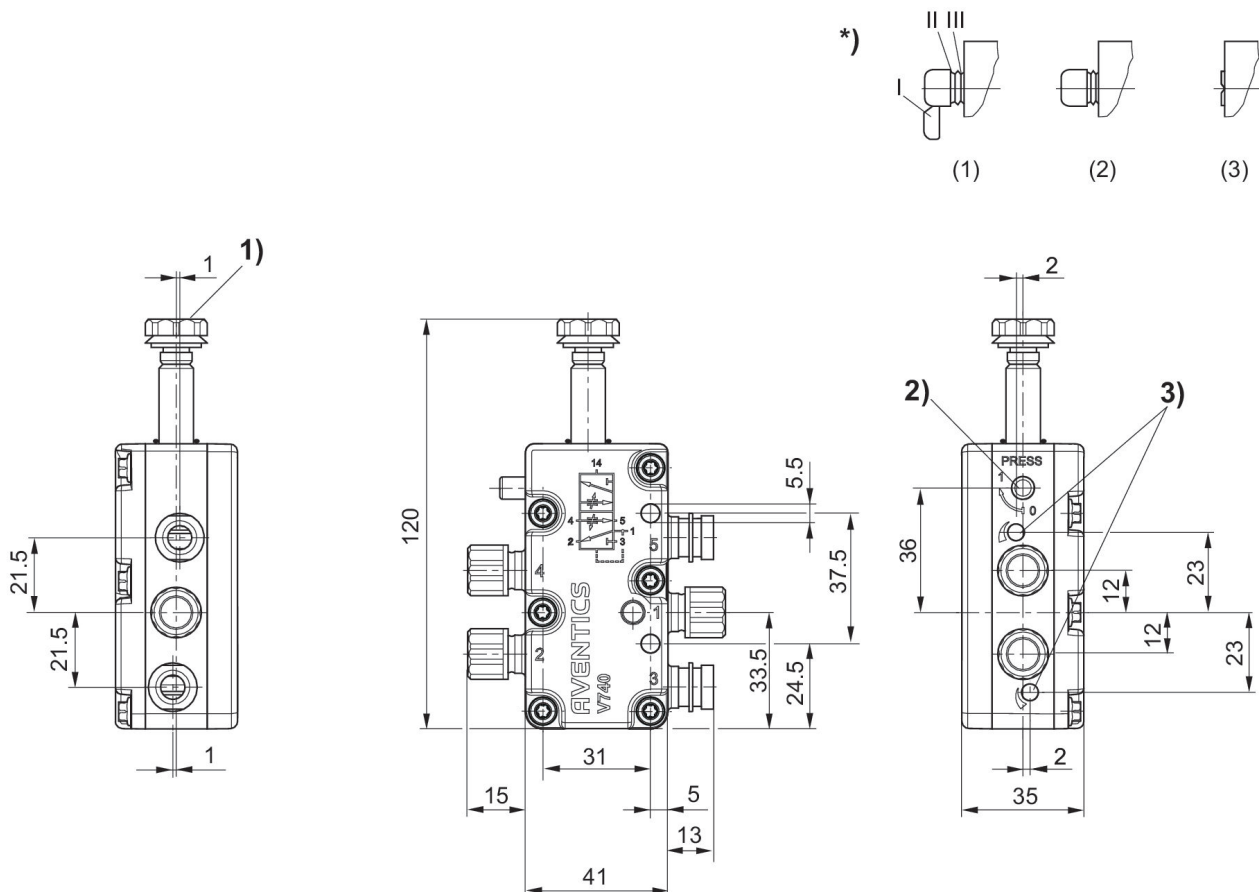
The min. control pressure must be adhered to, since otherwise faulty switching and valve failure may result!

The pressure dew point must be at least 15 °C less than ambient and medium temperature and may not exceed 3 °C.

The oil content of compressed air must remain constant during the life cycle.

Use only the approved oils from AVENTICS. Further information can be found in the "Technical information" document (available in <https://www.emerson.com/en-us/support>).

Dimensions in mm



1) M5 internal thread accessible under cap

2) Manual override and position indicator

3) Throttle screw for exhausts 5 (R) and 3 (S) (S)

* Manual override: Manual actuation: (1) with detent - push and turn into position 1 (2) without detent - remove segment I - push only Actuation with tool: (3) with detent - remove segments up to II - push with tool and turn into position 1