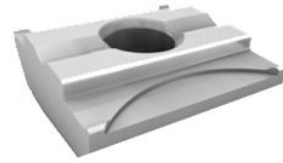


# T-groove nut

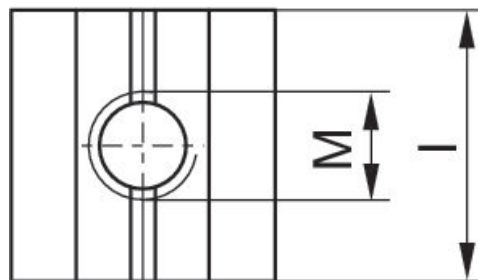
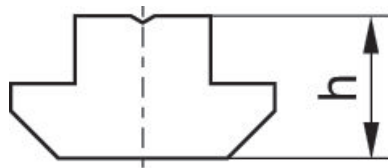
3842523142

2024-01-18



## Technical data

Industry	Industrial
Type	N6
Scope of delivery	10 piece
Weight	0.003 kg
Housing material	Stainless Steel
Part No.	3842523142



Part No.	Type	M	h	l
3842523142	N6	M5	4	20
3842514931	N8	M8	6	16

For N4 grooves on CKP 16 a square nut according to DIN 557 can be used.