

# Nut MR3, series CM1

3012010180

Nuts for  
cylinder  
mounting

2023-11-28

## AVENTICS Nuts for cylinder mounting



### Technical data

|                 |                       |
|-----------------|-----------------------|
| Industry        | Industrial            |
| Version         | for cylinder mounting |
| For series      | 102                   |
| Piston diameter | 113 mm<br>160 mm      |
| Thread size     | M36x3                 |
| Weight          | 0.13 kg               |

### Material

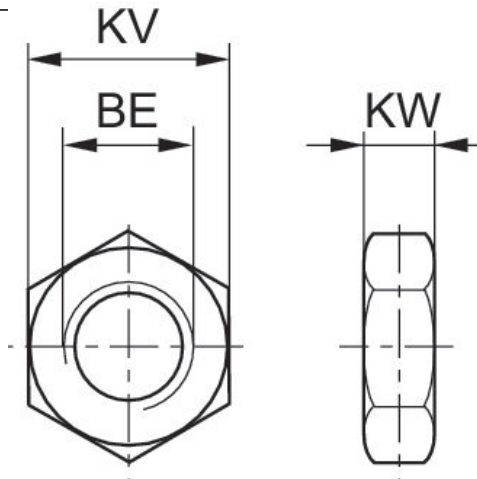
|          |                      |
|----------|----------------------|
| Material | Steel, chrome-plated |
| Surface  | galvanized           |
| Part No. | 3012010180           |

# Nut MR3, series CM1

3012010180

Nuts for  
cylinder  
mounting

2023-11-28



| Piston Ø | Part No.   | For series      | BE       | KV | KW   |
|----------|------------|-----------------|----------|----|------|
| 8, 10    | 1823300024 | MNI             | M12x1,25 | 17 | 5.5  |
| 12, 16   | 2915A51204 | MNI             | M16x1,5  | 22 | 6    |
| 20, 25   | 2915051207 | CSL-<br>RD, MNI | M22x1,5  | 30 | 7    |
| 8, 10    | 0413215803 | ICM             | M12x1,25 | 17 | 6.75 |
| 16       | 0413214505 | ICM             | M16x1,5  | 24 | 7    |
| 16       | 2918540030 | CSL-RD          | M16 x1,5 | 27 | 8    |
| 20, 25   | 0413214602 | ICM             | M22 x1,5 | 30 | 8    |
| 20, 25   | R913030290 | CSL-RD          | M22 x1,5 | 32 | 11   |
| 32       | 0413214718 | ICM             | M30x1,5  | 41 | 11   |
| 80       | 3008010180 | 102             | M24x2    | 36 | 8    |
| 60, 85   | 3056010180 | 102             | M24      | 36 | 8    |
| 32       | R412027809 | 102             | M30x1,5  | 36 | 10   |
| 40       | R412027810 | RPC             | M36x1,5  | 46 | 10   |
| 113, 160 | 3012010180 | 102             | M36x3    | 52 | 10   |
| 40       | R412027811 | RPC             | M38x1,5  | 46 | 10   |
| 50, 63   | R412027812 | RPC             | M45x1,5  | 60 | 12   |
| 250      | 3075010180 | 102             | M48x3    | 65 | 12   |