

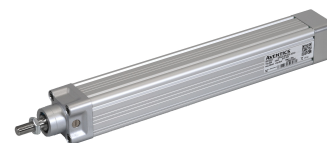
SPRA 系列

SPRA 系列

安沃驰 SPRA 系列活塞杆式电动执行器非常适合用于执行快速、强大的线性运动。它们灵活、准确且节能，有助于提高可持续性，降低总拥有成本 (TCO)。SPRA 系列采用模块化概念，能够轻松连接到您首选的电机和控制系统，节省设计和编程的时间及成本。SPRA 符合 ISO 15552 标准，使用 IP54S 密封系统等高品质材料，即使是在劣工况下也能够保持高可靠性。

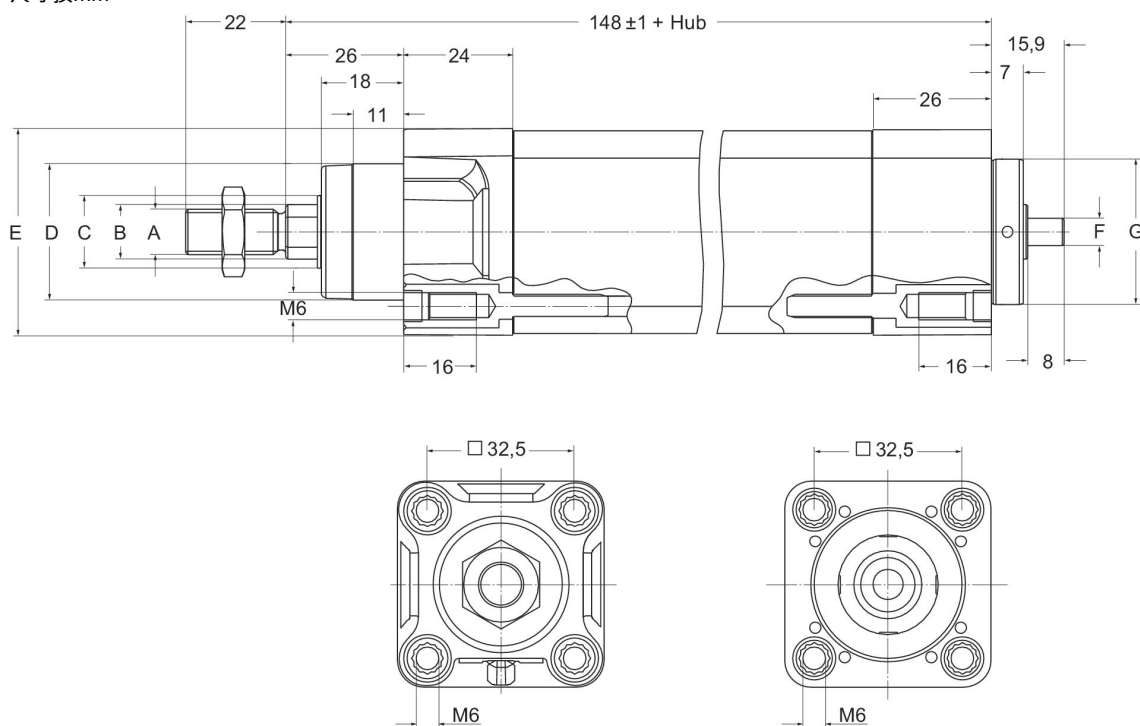
- 多位置、高精度、高可重复性
- 可选尺寸：32、40、63 和 100
- 采用三种不同的丝杠技术，产品用途广泛，可满足各种应用要求
- 电缸可灵活的安装，符合 ISO 15552 标准，兼容多种附件
- 通过互联的在线工具和组态工具，轻松选择和定制您的电动执行机构解决方案

SPRA 系列活塞杆式电动执行器

ISO 15552
滑动主轴

活塞-Ø [mm]	行程 [mm]	活塞杆螺纹	主轴类型	主轴节距 [mm]	物料号
32	50	M10x1,25	滑动主轴	1.5	R481633796
32	100	M10x1,25	滑动主轴	1.5	R481633797
32	150	M10x1,25	滑动主轴	1.5	R481633798
32	200	M10x1,25	滑动主轴	1.5	R481633799
32	300	M10x1,25	滑动主轴	1.5	R481633800
32	400	M10x1,25	滑动主轴	1.5	R481633801

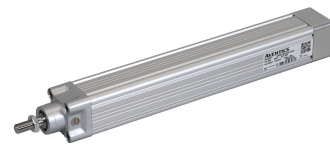
尺寸按mm



	A	B mm	C	D	E	F	G -0,05 / -0,07
SPRA-32	M10 x 1,25	Ø12	Ø16	Ø30 d11	□45.7	Ø6 h6	Ø32

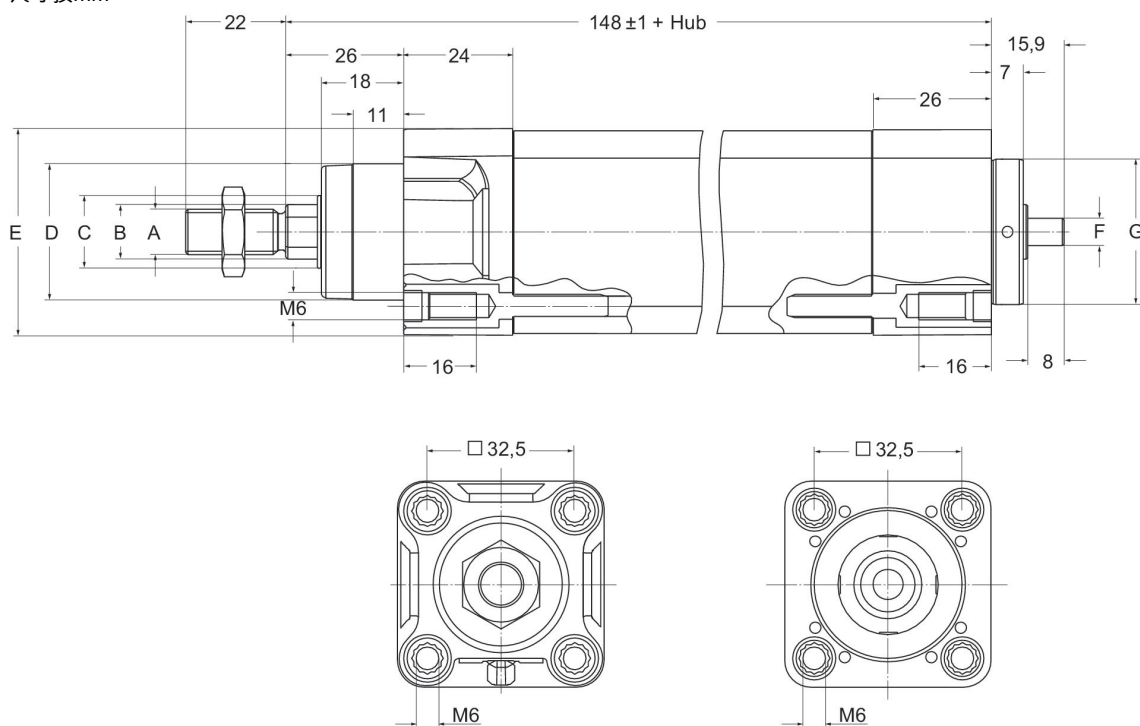
SPRA 系列活塞杆式电动执行器

ISO 15552
滚珠丝杠



活塞- Ø [mm]	行程 [mm]	活塞杆螺纹	动态承载量 [kN]	主轴类型	主轴节距 [mm]	物料号
32	50	M10x1,25	2.8	滚珠丝杠	3	R481633802
32	100	M10x1,25	2.8	滚珠丝杠	3	R481633803
32	150	M10x1,25	2.8	滚珠丝杠	3	R481633804
32	200	M10x1,25	2.8	滚珠丝杠	3	R481633805
32	300	M10x1,25	2.8	滚珠丝杠	3	R481633806
32	400	M10x1,25	2.8	滚珠丝杠	3	R481633807

尺寸按mm



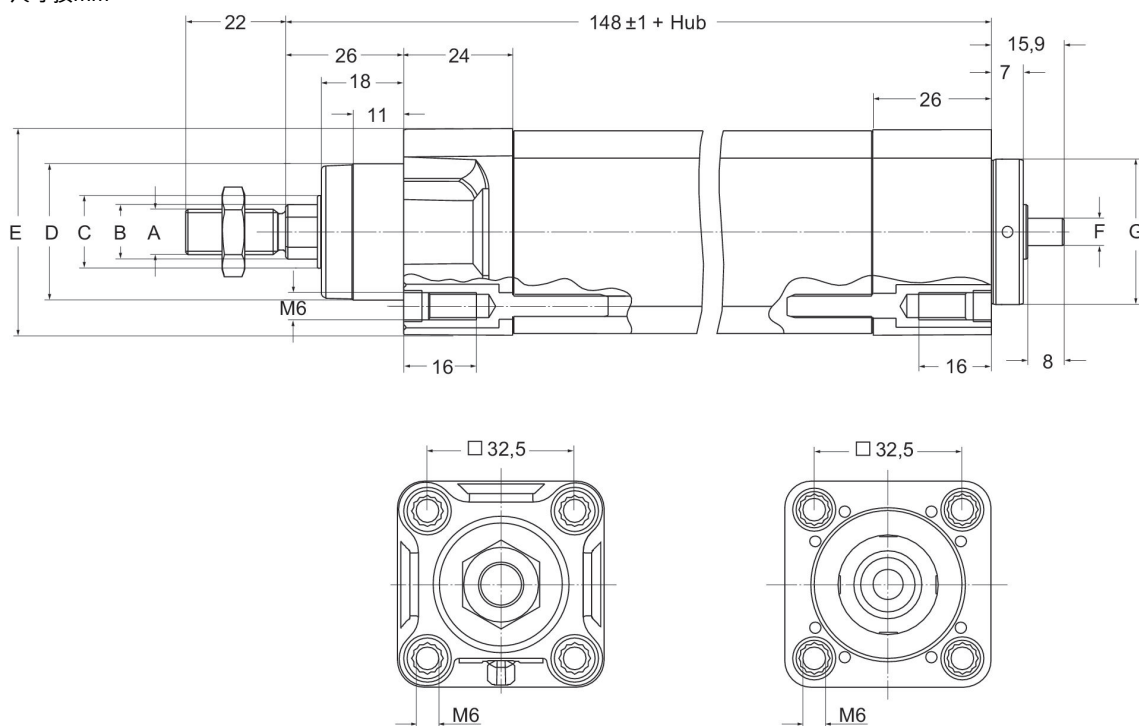
	A	B mm	C	D	E	F	G -0,05 / -0,07
SPRA-32	M10 x 1,25	Ø12	Ø16	Ø30 d11	□45.7	Ø6 h6	Ø32

SPRA 系列活塞杆式电动执行器

ISO 15552
滚珠丝杠

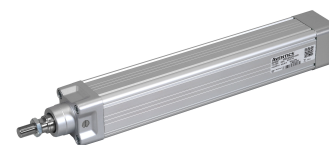
活塞-Ø [mm]	行程 [mm]	活塞杆螺纹	动态承载量 [kN]	主轴类型	主轴节距 [mm]	物料号
32	50	M10x1,25	2.5	滚珠丝杠	10	R481633808
32	100	M10x1,25	2.5	滚珠丝杠	10	R481633809
32	150	M10x1,25	2.5	滚珠丝杠	10	R481633810
32	200	M10x1,25	2.5	滚珠丝杠	10	R481633811
32	300	M10x1,25	2.5	滚珠丝杠	10	R481633812
32	400	M10x1,25	2.5	滚珠丝杠	10	R481633813

尺寸按mm



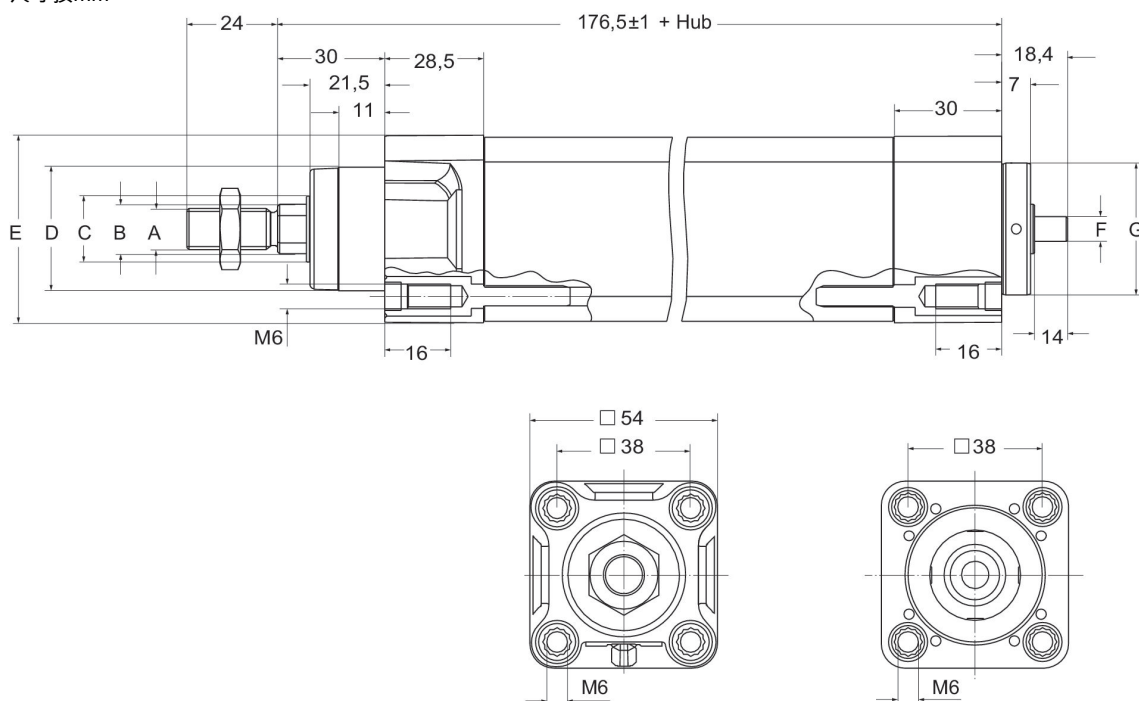
	A	B mm	C	D	E	F	G -0,05 / -0,07
SPRA-32	M10 x 1,25	Ø12	Ø16	Ø30 d11	□45.7	Ø6 h6	Ø32

SPRA 系列活塞杆式电动执行器

ISO 15552
滑动主轴

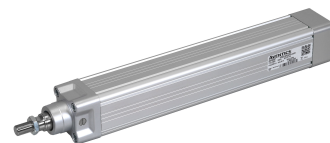
活塞-Ø [mm]	行程 [mm]	活塞杆螺纹	主轴类型	主轴节距 [mm]	物料号
40	100	M12x1,25	滑动主轴	2.5	R481633814
40	200	M12x1,25	滑动主轴	2.5	R481633815
40	300	M12x1,25	滑动主轴	2.5	R481633816
40	400	M12x1,25	滑动主轴	2.5	R481633817
40	500	M12x1,25	滑动主轴	2.5	R481633818
40	600	M12x1,25	滑动主轴	2.5	R481633819

尺寸按mm



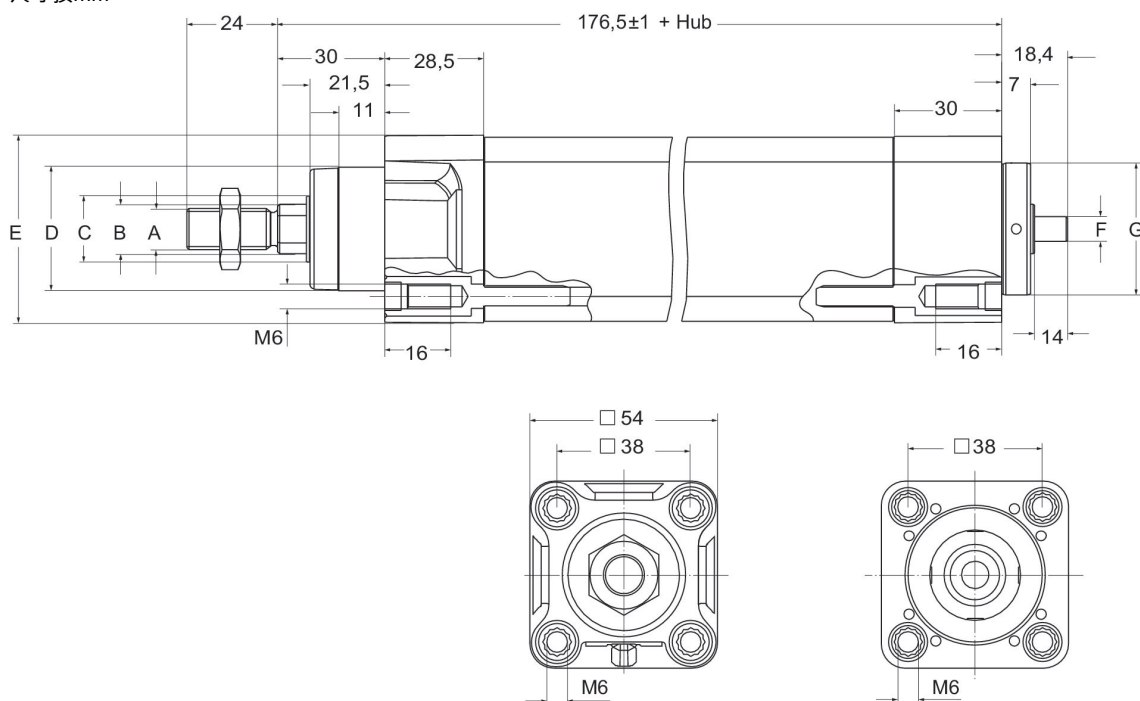
	A	B mm	C	D	E	F	G -0,09 / -0,1
SPRA-40	M12 x 1,25	Ø16	Ø20	Ø35 d11	54.3	Ø8 h6	Ø40

SPRA 系列活塞杆式电动执行器

ISO 15552
滚珠丝杠

活塞-Ø [mm]	行程 [mm]	活塞杆螺纹	动态承载量 [kN]	主轴类型	主轴节距 [mm]	物料号
40	100	M12x1,25	4.8	滚珠丝杠	5	R481633820
40	200	M12x1,25	4.8	滚珠丝杠	5	R481633821
40	300	M12x1,25	4.8	滚珠丝杠	5	R481633822
40	400	M12x1,25	4.8	滚珠丝杠	5	R481633823
40	500	M12x1,25	4.8	滚珠丝杠	5	R481633824
40	600	M12x1,25	4.8	滚珠丝杠	5	R481633825

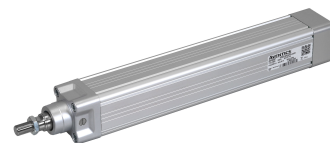
尺寸按mm



	A	B mm	C	D	E	F	G -0,09 / -0,1
SPRA-40	M12 x 1,25	Ø16	Ø20	Ø35 d11	54.3	Ø8 h6	Ø40

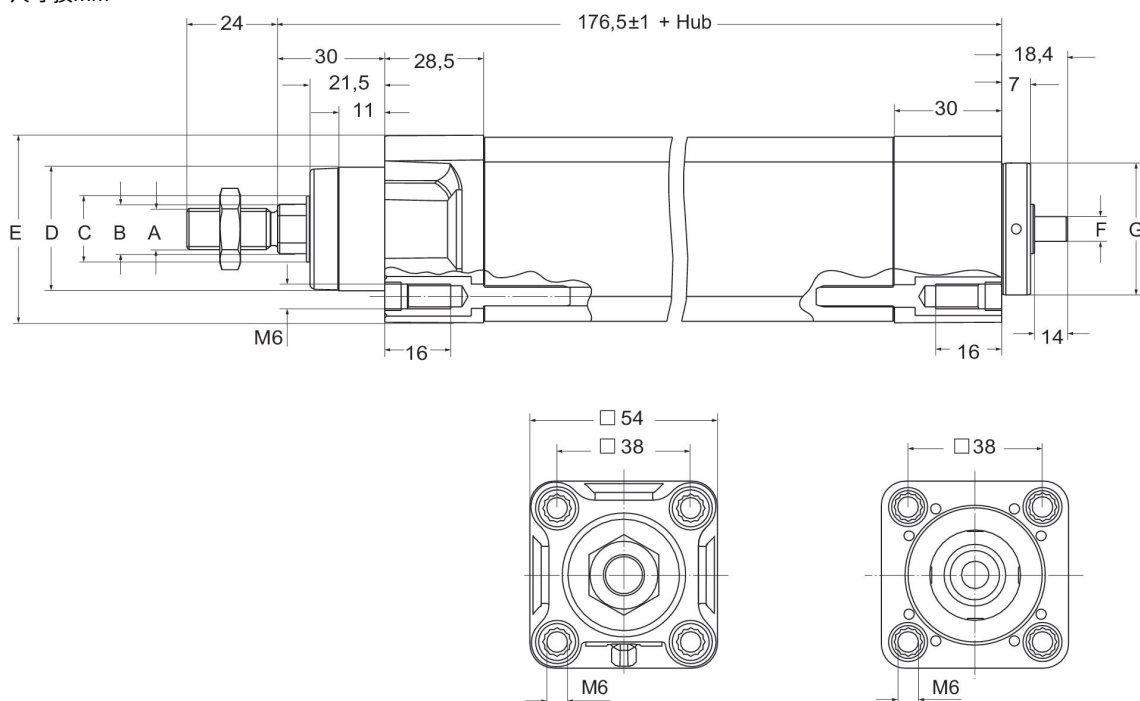
SPRA 系列活塞杆式电动执行器

ISO 15552
滚珠丝杠



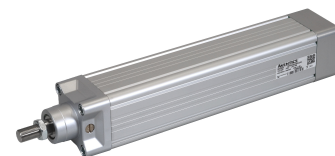
活塞- Ø [mm]	行程 [mm]	活塞杆螺纹	动态承载量 [kN]	主轴类型	主轴节距 [mm]	物料号
40	100	M12x1,25	6	滚珠丝杠	12.7	R481633826
40	200	M12x1,25	6	滚珠丝杠	12.7	R481633827
40	300	M12x1,25	6	滚珠丝杠	12.7	R481633828
40	400	M12x1,25	6	滚珠丝杠	12.7	R481633829
40	500	M12x1,25	6	滚珠丝杠	12.7	R481633830
40	600	M12x1,25	6	滚珠丝杠	12.7	R481633831

尺寸按mm



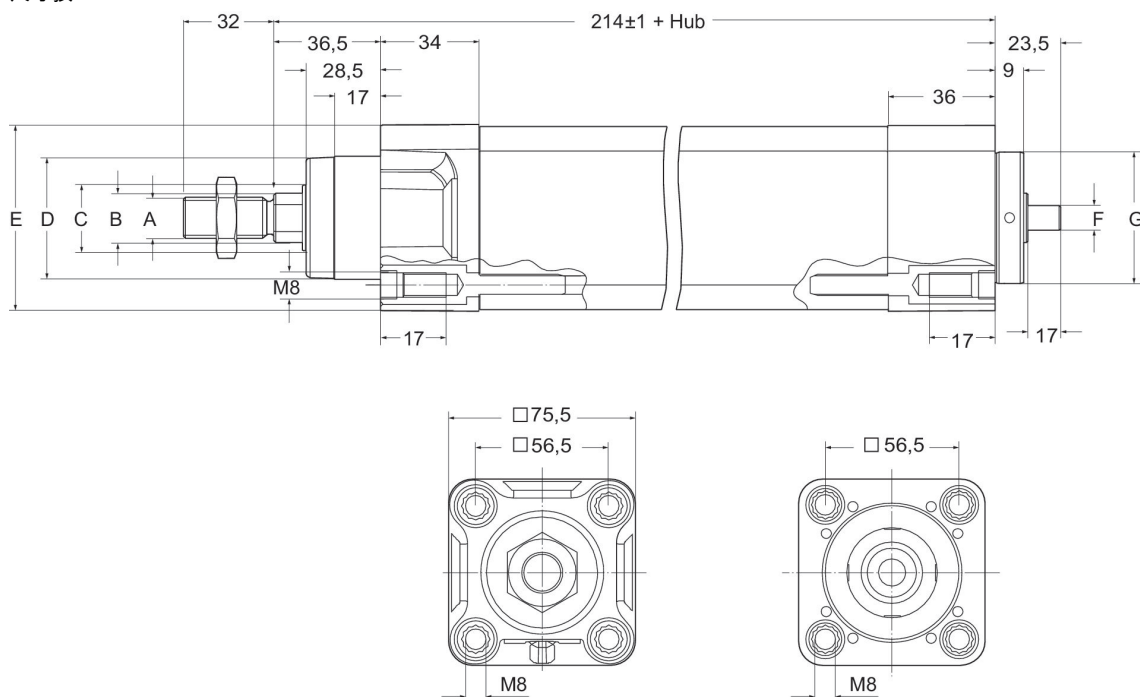
	A	B mm	C	D	E	F	G -0,09 / -0,1
SPRA-40	M12 x 1,25	Ø16	Ø20	Ø35 d11	54.3	Ø8 h6	Ø40

SPRA 系列活塞杆式电动执行器

ISO 15552
滑动主轴

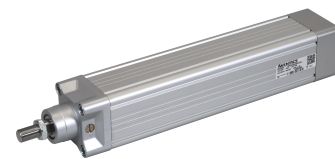
活塞-Ø [mm]	行程 [mm]	活塞杆螺纹	主轴类型	主轴节距 [mm]	物料号
63	100	M16x1,5	滑动主轴	4	R481633832
63	200	M16x1,5	滑动主轴	4	R481633833
63	300	M16x1,5	滑动主轴	4	R481633834
63	400	M16x1,5	滑动主轴	4	R481633835
63	500	M16x1,5	滑动主轴	4	R481633836
63	600	M16x1,5	滑动主轴	4	R481633837
63	700	M16x1,5	滑动主轴	4	R481633838
63	800	M16x1,5	滑动主轴	4	R481633839

尺寸按mm



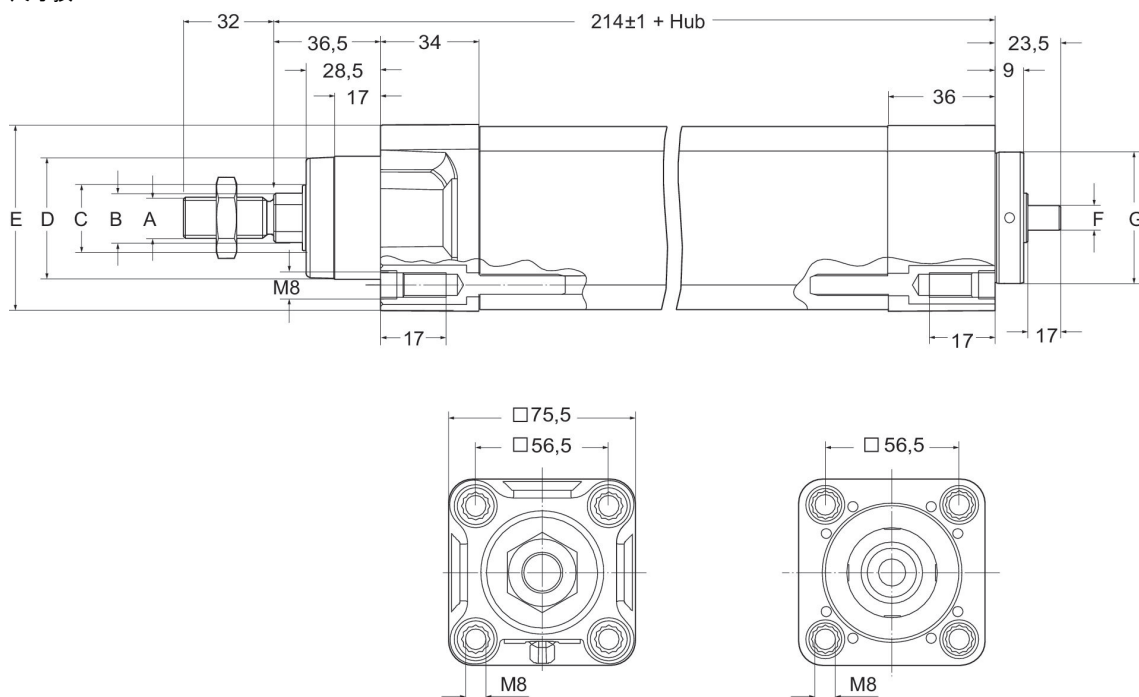
	A	B mm	C	D	E	F	G -0,05 / -0,08
SPRA-63	M16 x 1,5	Ø20	Ø28	Ø45 d11	75	Ø12 h6	Ø60

SPRA 系列活塞杆式电动执行器

ISO 15552
滚珠丝杠

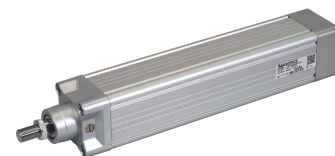
活塞-Ø [mm]	行程 [mm]	活塞杆螺纹	动态承载量 [kN]	主轴类型	主轴节距 [mm]	物料号
63	100	M16x1,5	13.7	滚珠丝杠	5	R481633840
63	200	M16x1,5	13.7	滚珠丝杠	5	R481633841
63	300	M16x1,5	13.7	滚珠丝杠	5	R481633842
63	400	M16x1,5	13.7	滚珠丝杠	5	R481633843
63	500	M16x1,5	13.7	滚珠丝杠	5	R481633844
63	600	M16x1,5	13.7	滚珠丝杠	5	R481633845
63	700	M16x1,5	13.7	滚珠丝杠	5	R481633846
63	800	M16x1,5	13.7	滚珠丝杠	5	R481633847

尺寸按mm



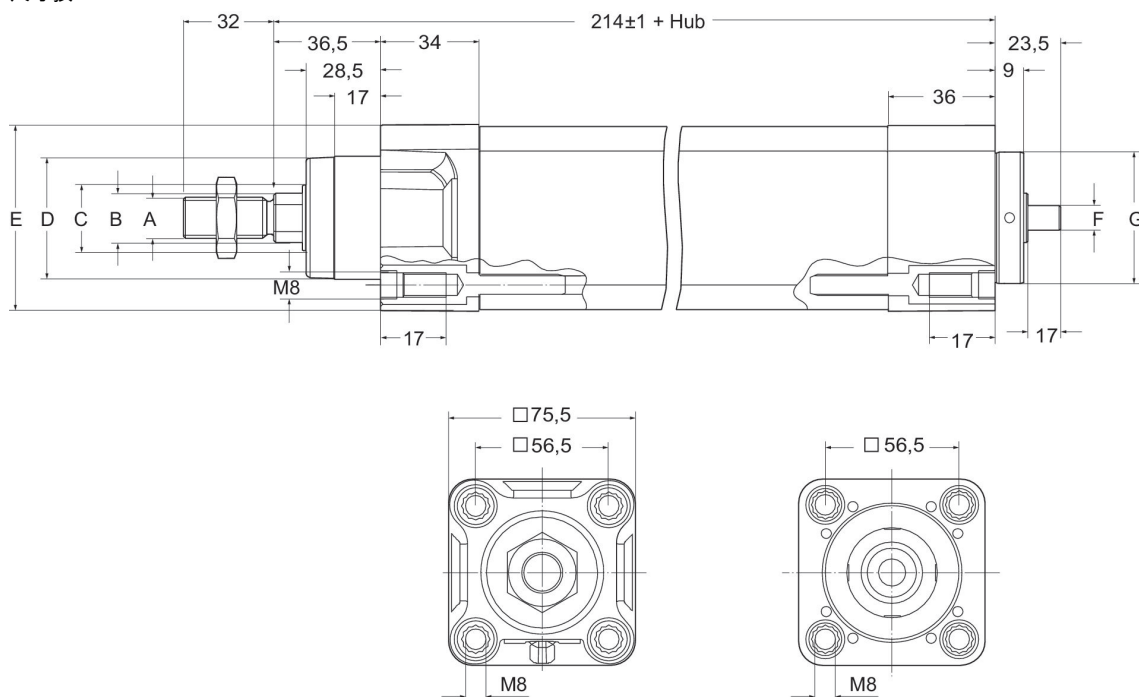
	A	B mm	C	D	E	F	G -0,05 / -0,08
SPRA-63	M16 x 1,5	Ø20	Ø28	Ø45 d11	75	Ø12 h6	Ø60

SPRA 系列活塞杆式电动执行器

ISO 15552
滚珠丝杠

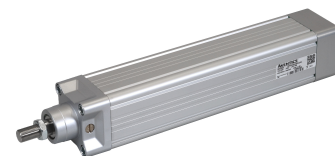
活塞- Ø [mm]	行程 [mm]	活塞杆螺纹	动态承载量 [kN]	主轴类型	主轴节距 [mm]	物料号
63	100	M16x1,5	21	滚珠丝杠	10	R481633848
63	200	M16x1,5	21	滚珠丝杠	10	R481633849
63	300	M16x1,5	21	滚珠丝杠	10	R481633850
63	400	M16x1,5	21	滚珠丝杠	10	R481633851
63	500	M16x1,5	21	滚珠丝杠	10	R481633852
63	600	M16x1,5	21	滚珠丝杠	10	R481633853
63	700	M16x1,5	21	滚珠丝杠	10	R481633854
63	800	M16x1,5	21	滚珠丝杠	10	R481633855

尺寸按mm



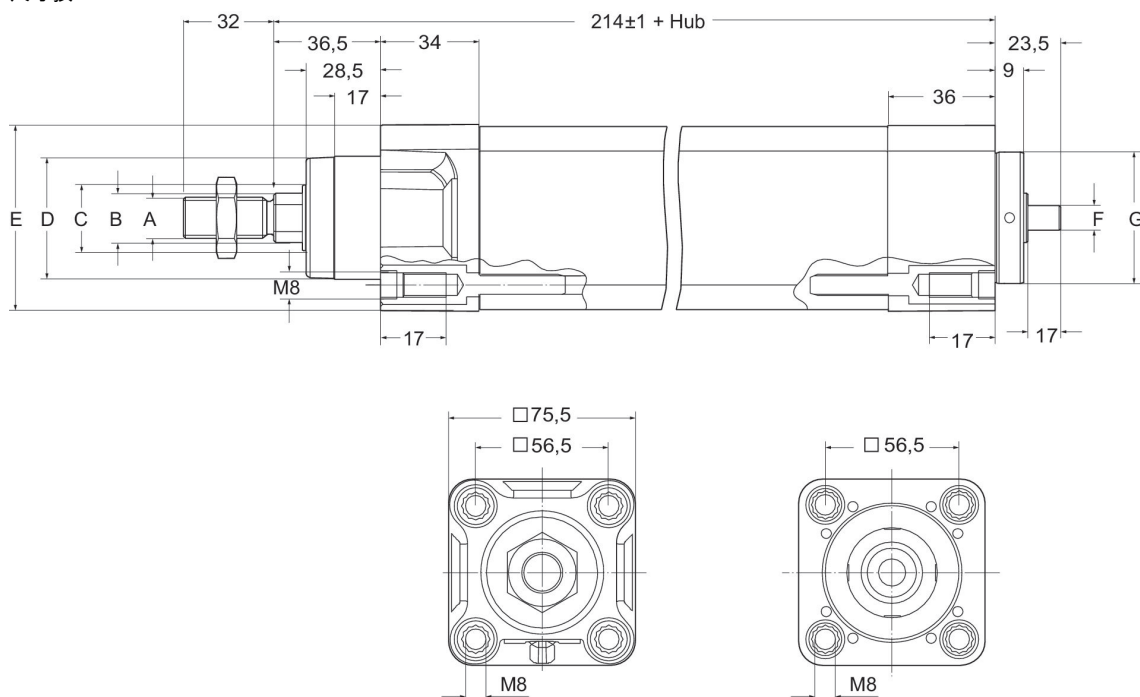
	A	B mm	C	D	E	F	G -0,05 / -0,08
SPRA-63	M16 x 1,5	Ø20	Ø28	Ø45 d11	75	Ø12 h6	Ø60

SPRA 系列活塞杆式电动执行器

ISO 15552
滚珠丝杠

活塞- Ø [mm]	行程 [mm]	活塞杆螺纹	动态承载量 [kN]	主轴类型	主轴节距 [mm]	物料号
63	100	M16x1,5	10	滚珠丝杠	20	R481633856
63	200	M16x1,5	10	滚珠丝杠	20	R481633857
63	300	M16x1,5	10	滚珠丝杠	20	R481633858
63	400	M16x1,5	10	滚珠丝杠	20	R481633859
63	500	M16x1,5	10	滚珠丝杠	20	R481633860
63	600	M16x1,5	10	滚珠丝杠	20	R481633861
63	700	M16x1,5	10	滚珠丝杠	20	R481633862
63	800	M16x1,5	10	滚珠丝杠	20	R481633863

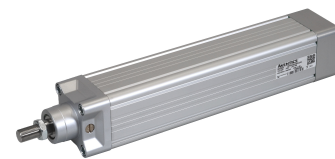
尺寸按mm



	A	B mm	C	D	E	F	G -0,05 / -0,08
SPRA-63	M16 x 1,5	Ø20	Ø28	Ø45 d11	75	Ø12 h6	Ø60

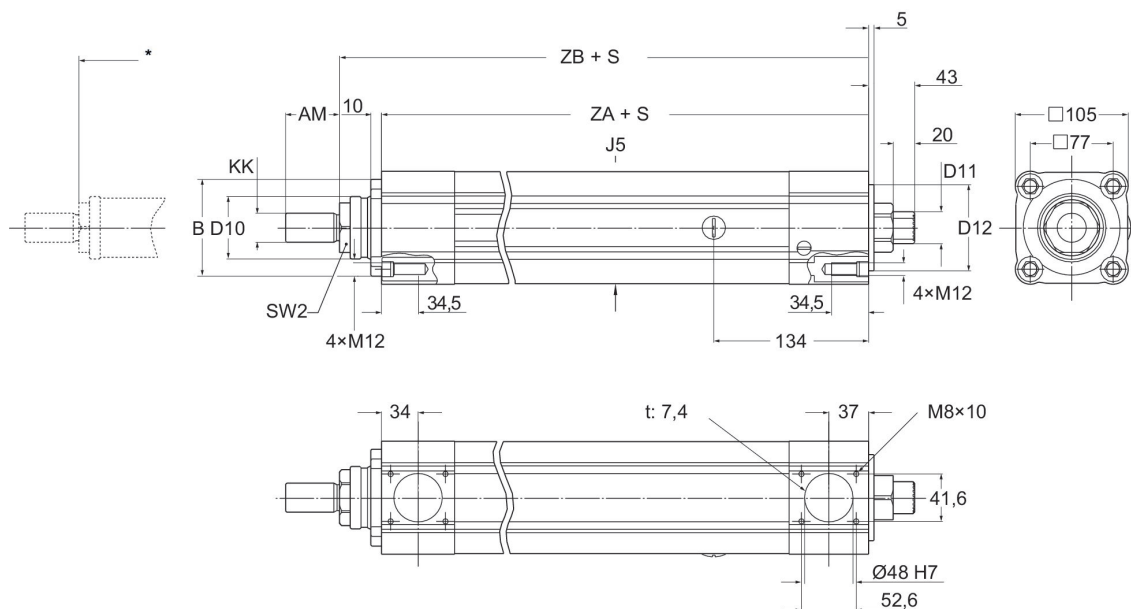
SPRA 系列活塞杆式电动执行器

滚珠丝杠



活塞- \varnothing [mm]	行程 [mm]	活塞杆螺纹	动态承载量 [kN]	主轴类型	主轴节距 [mm]	物料号
100	100	M27x2	27.1	滚珠丝杠	10	R481633864
100	200	M27x2	27.1	滚珠丝杠	10	R481633865
100	300	M27x2	27.1	滚珠丝杠	10	R481633866
100	400	M27x2	27.1	滚珠丝杠	10	R481633867
100	500	M27x2	27.1	滚珠丝杠	10	R481633868
100	600	M27x2	27.1	滚珠丝杠	10	R481633869
100	700	M27x2	27.1	滚珠丝杠	10	R481633870
100	800	M27x2	27.1	滚珠丝杠	10	R481633871
100	900	M27x2	27.1	滚珠丝杠	10	R481633872
100	1000	M27x2	27.1	滚珠丝杠	10	R481633873

尺寸按mm



S = 行程
* 额定起升
t = 深度

KK	SW2	J5 mm	ZA	ZB	B -0,1 / -0,35	D10	AM	D12 -0,02 / -0,07	D11
M27 x 2	AF 46	□104	287±1.5	326±2	Ø90	Ø58	50	Ø80	DIN5480 W 30x1.25x22x8f

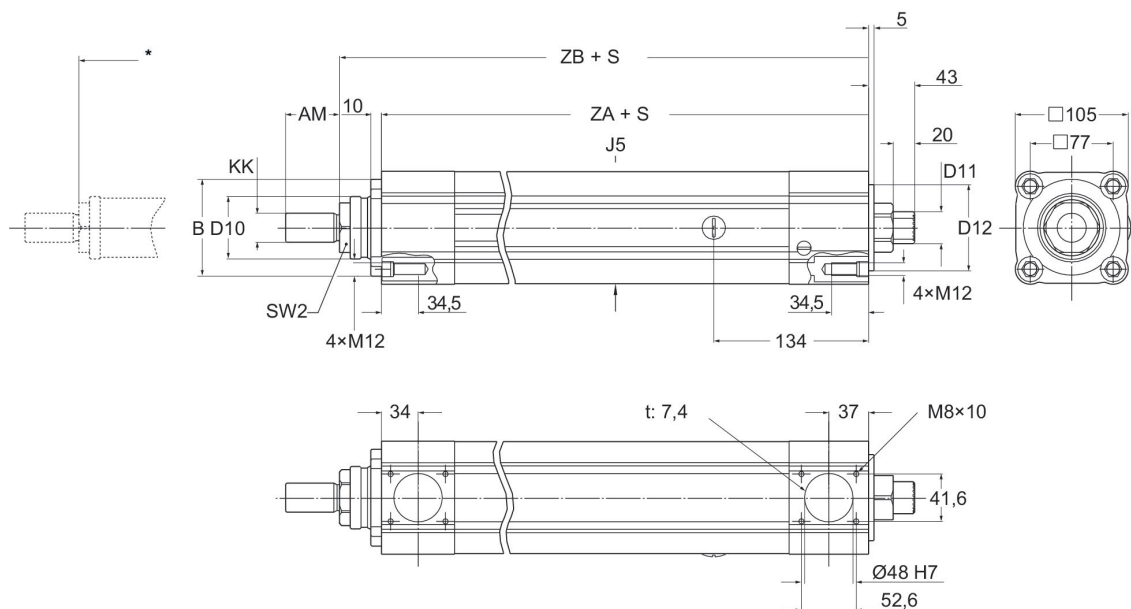
SPRA 系列活塞杆式电动执行器

滚珠丝杠



活塞- \varnothing [mm]	行程 [mm]	活塞杆螺纹	动态承载量 [kN]	主轴类型	主轴节距 [mm]	物料号
100	100	M27x2	61.5	滚珠丝杠	10	R481633874
100	200	M27x2	61.5	滚珠丝杠	10	R481633875
100	300	M27x2	61.5	滚珠丝杠	10	R481633876
100	400	M27x2	61.5	滚珠丝杠	10	R481633877
100	500	M27x2	61.5	滚珠丝杠	10	R481633878
100	600	M27x2	61.5	滚珠丝杠	10	R481633879
100	700	M27x2	61.5	滚珠丝杠	10	R481633880
100	800	M27x2	61.5	滚珠丝杠	10	R481633881
100	900	M27x2	61.5	滚珠丝杠	10	R481633882
100	1000	M27x2	61.5	滚珠丝杠	10	R481633883

尺寸按mm

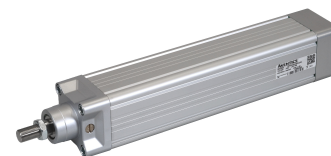


S = 行程
* 额定起升
t = 深度

KK	SW2	J5 mm	ZA	ZB	B -0,1 / -0,35	D10	AM	D12 -0,02 / -0,07	D11
M27 x 2	AF 46	□104	287±1.5	326±2	Ø90	Ø58	50	Ø80	DIN5480 W 30x1.25x22x8f

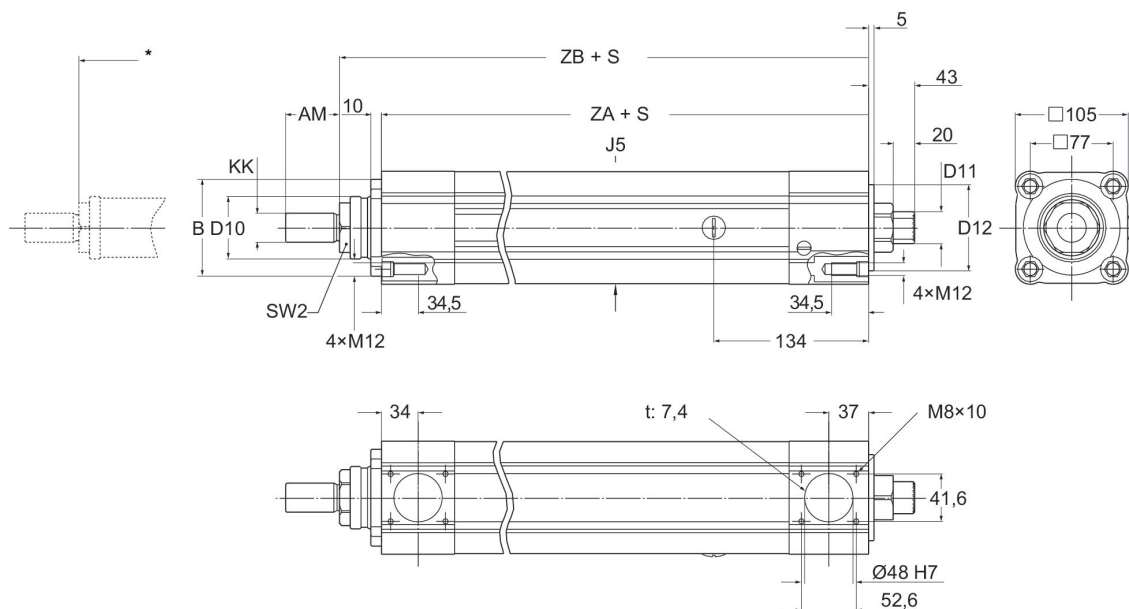
SPRA 系列活塞杆式电动执行器

滚珠丝杠



活塞- Ø [mm]	行程 [mm]	活塞杆螺纹	动态承载量 [kN]	主轴类型	主轴节距 [mm]	物料号
100	100	M27x2	41.3	滚珠丝杠	20	R481633884
100	200	M27x2	41.3	滚珠丝杠	20	R481633885
100	300	M27x2	41.3	滚珠丝杠	20	R481633886
100	400	M27x2	41.3	滚珠丝杠	20	R481633887
100	500	M27x2	41.3	滚珠丝杠	20	R481633888
100	600	M27x2	41.3	滚珠丝杠	20	R481633889
100	700	M27x2	41.3	滚珠丝杠	20	R481633890
100	800	M27x2	41.3	滚珠丝杠	20	R481633891
100	900	M27x2	41.3	滚珠丝杠	20	R481633892
100	1000	M27x2	41.3	滚珠丝杠	20	R481633893

尺寸按mm

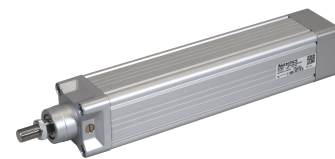


S = 行程
* 额定起升
t = 深度

KK	SW2	J5 mm	ZA	ZB	B -0,1 / -0,35	D10	AM	D12 -0,02 / -0,07	D11
M27 x 2	AF 46	□104	287±1.5	326±2	Ø90	Ø58	50	Ø80	DIN5480 W 30x1.25x22x8f

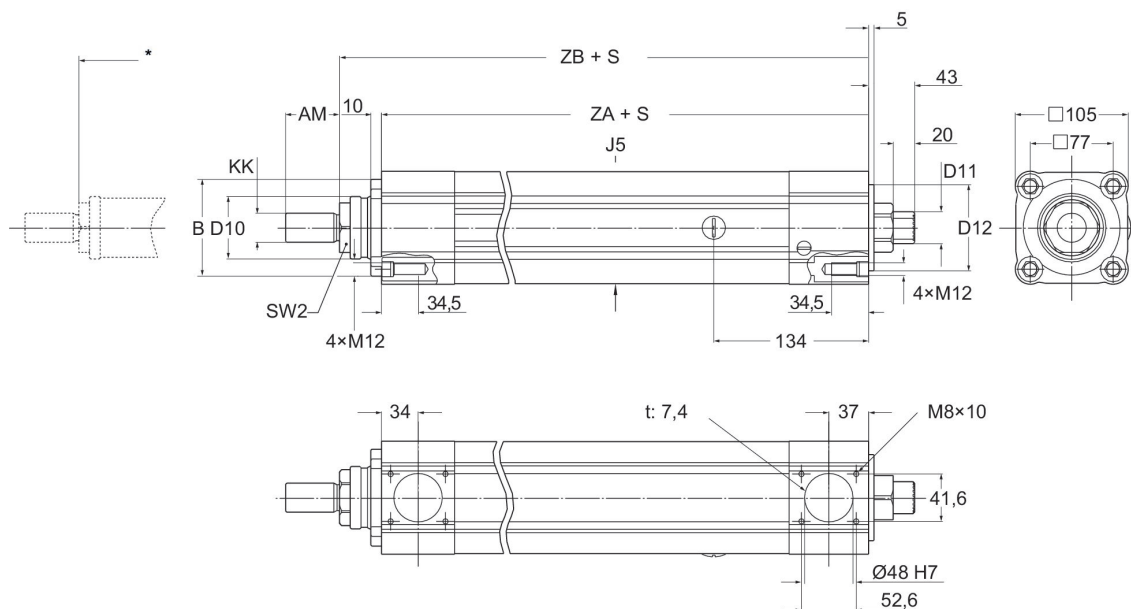
SPRA 系列活塞杆式电动执行器

滚子螺纹



活塞- \varnothing [mm]	行程 [mm]	活塞杆螺纹	动态承载量 [kN]	主轴类型	主轴节距 [mm]	物料号
100	100	M27x2	106	滚子螺纹	10	R481633894
100	200	M27x2	106	滚子螺纹	10	R481633895
100	300	M27x2	106	滚子螺纹	10	R481633896
100	400	M27x2	106	滚子螺纹	10	R481633897
100	500	M27x2	106	滚子螺纹	10	R481633898
100	600	M27x2	106	滚子螺纹	10	R481633899
100	700	M27x2	106	滚子螺纹	10	R481633900
100	800	M27x2	106	滚子螺纹	10	R481633901
100	900	M27x2	106	滚子螺纹	10	R481633902
100	1000	M27x2	106	滚子螺纹	10	R481633903

尺寸按mm



S = 行程
* 额定起升
t = 深度

KK	SW2	J5 mm	ZA	ZB	B -0,1 / -0,35	D10	AM	D12 -0,02 / -0,07	D11
M27 x 2	AF 46	□104	287±1.5	326±2	Ø90	Ø58	50	Ø80	DIN5480 W 30x1.25x22x8f

Efficient pneumatic solutions, our program: cylinders and drives, valves and valve systems, air supply management



Visit us: [Emerson.com/Aventics](https://www.emerson.com/Aventics)

Your local contact: [Emerson.com/contactus](https://www.emerson.com/contactus)



[Emerson.com](https://www.emerson.com)



[Facebook.com/EmersonAutomationSolutions](https://www.facebook.com/EmersonAutomationSolutions)



[LinkedIn.com/company/Emerson-Automation-Solutions](https://www.linkedin.com/company/Emerson-Automation-Solutions)



[Twitter.com/EMR_Automation](https://twitter.com/EMR_Automation)

An example configuration is depicted on the title page. The delivered product may thus vary from that in the illustration. Subject to change. This Document, as well as the data, specifications and other information set forth in it, are the exclusive property of AVENTICS GmbH. It may not be reproduced or given to third parties without its consent. Only use the AVENTICS products shown in industrial applications. Read the product documentation completely and carefully before using the product. Observe the applicable regulations and laws of the respective country. When integrating the product into applications, note the system manufacturer's specifications for safe use of the product. The data specified only serve to describe the product. No statements concerning a certain condition or suitability for a certain application can be derived from our information. The information given does not release the user from the obligation of own judgment and verification. It must be remembered that the products are subject to a natural process of wear and aging.

The Emerson logo is a trademark and service mark of Emerson Electric Co. Brand logotype are registered trademarks of one of the Emerson family of companies. All other marks are the property of their respective owners. © 2019 Emerson Electric Co. All rights reserved.



EMERSON™

CONSIDER IT SOLVED™