

Series 521



Series 521

The AVENTICS Series 521 is a line of solenoid air-operated, mini-spool valves that are ideal for piloting pneumatic cylinders. The valves have high-quality coils resistant to heat and moisture and suitable for high ambient temperatures and harsh environments. They can be mounted on joinable subbases for manifold applications. The AVENTICS Series 521 valves are suitable for automotive, case packing, packaging, and tire manufacturing applications.

- Anodised aluminium G1/4-tapped body with NBR seals for extended service life
- Non-breathing construction where the spring return chambers of the single- or double-acting actuator are collected with the solenoid valve exhaust
- Handles lubricated or non-lubricated air or neutral gas
- Ambient temperature range 5° C to 50° C
- Satisfies all relevant EU Directives



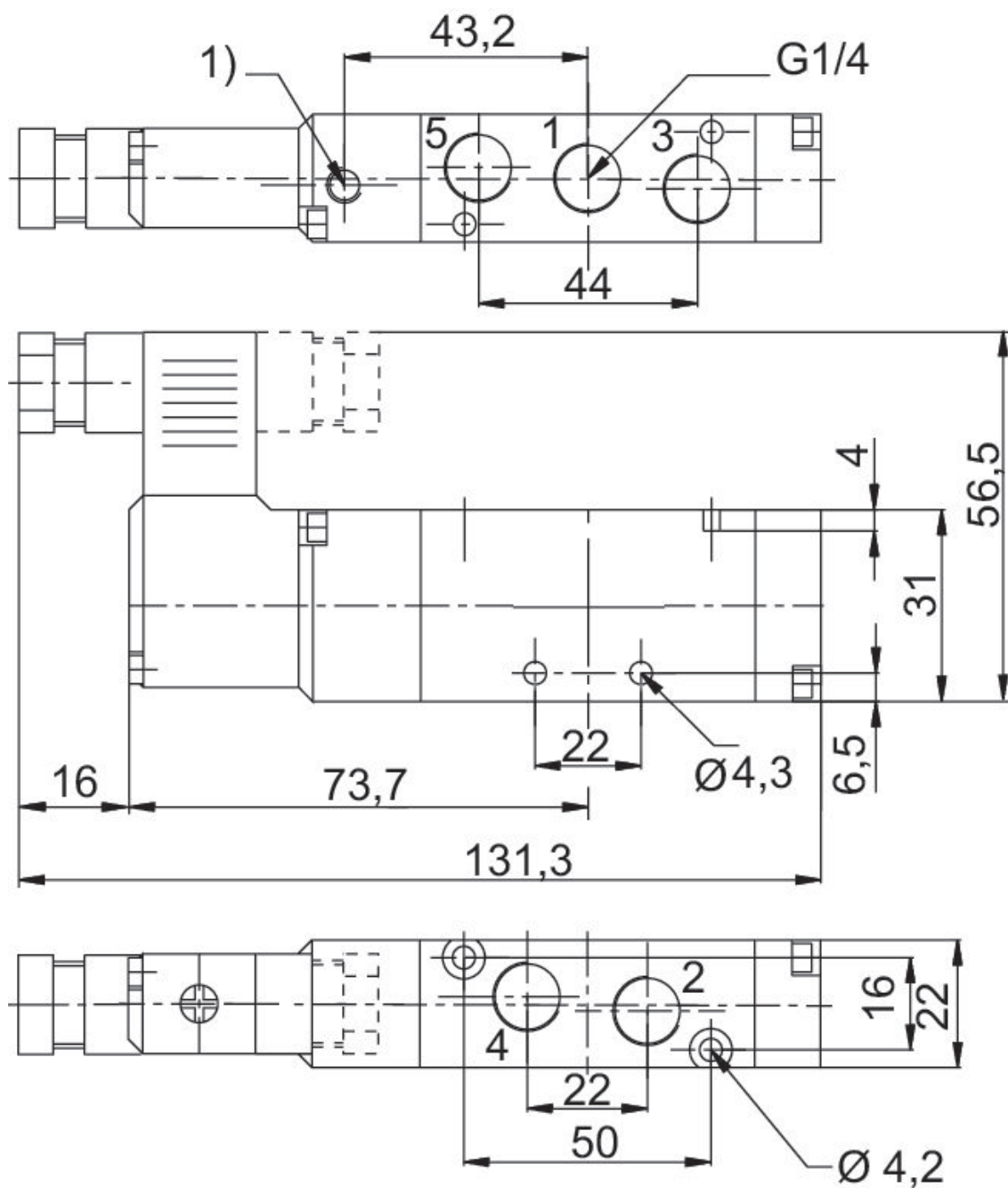
5/2-directional valve, Series 521

1050 l/min
Single Solenoid
Plug
EN 175301-803, form C
Internal thread
Electrically



Manual override	Switching principle	Operational voltage	Pilot	Power consumption DC [W]	Part No.
without detent	5/2, with spring return	24 V DC	Internal	1.6	52100401

Dimensions



1) Pilot Exhaust

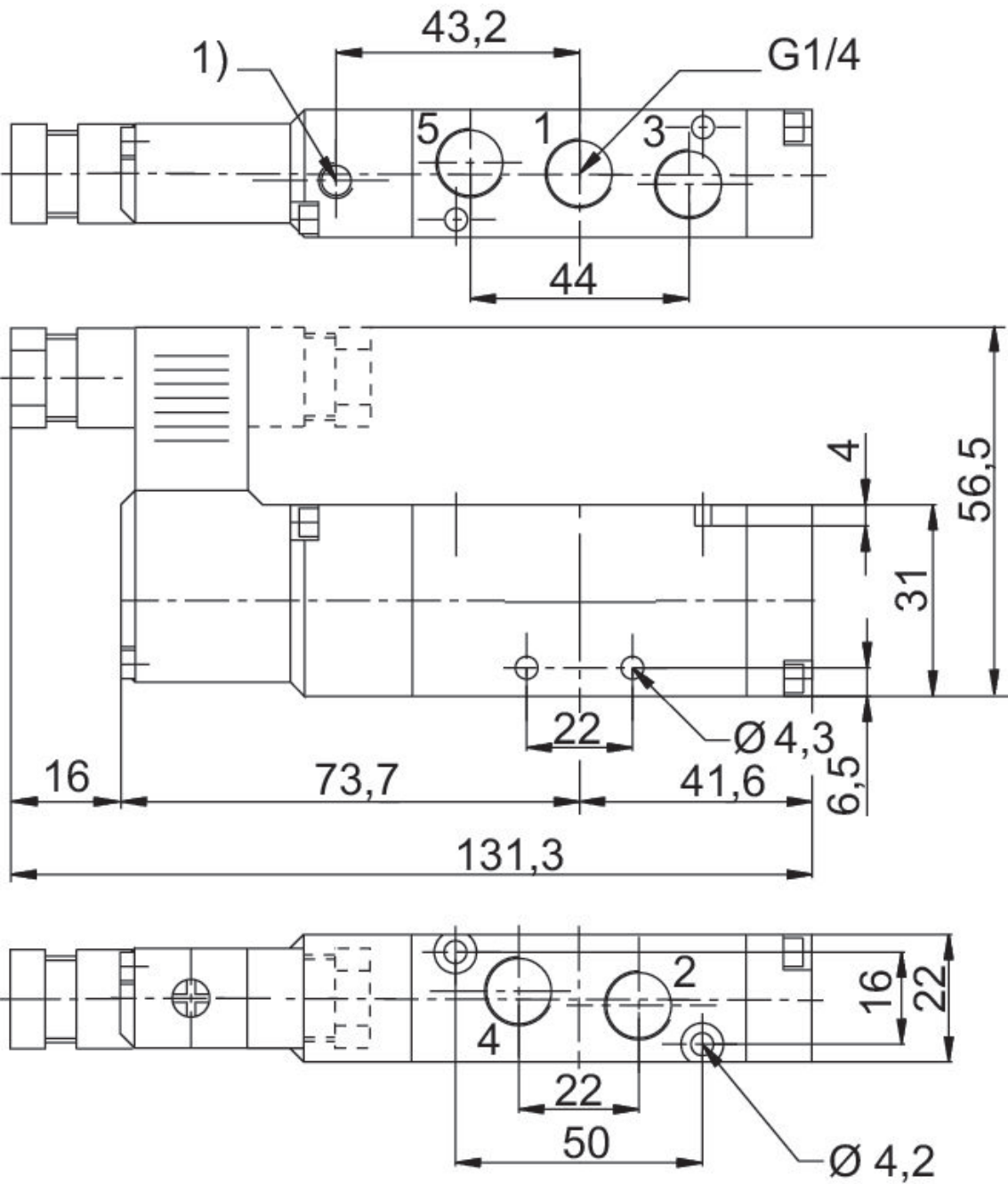
5/2-directional valve, Series 521

1050 l/min
Single Solenoid
Plug
EN 175301-803, form C
Internal thread
Electrically



Manual override	Switching principle	Operational voltage	Pilot	Power consumption DC [W]	Part No.
without detent	5/2, with air spring return	24 V AC	Internal		52100002
without detent	5/2, with air spring return	110 V AC	Internal		52100003
without detent	5/2, with air spring return	230 V AC	Internal		52100004
without detent	5/2, with air spring return	24 V DC	Internal	1.6	52100001

Dimensions



1) Pilot Exhaust

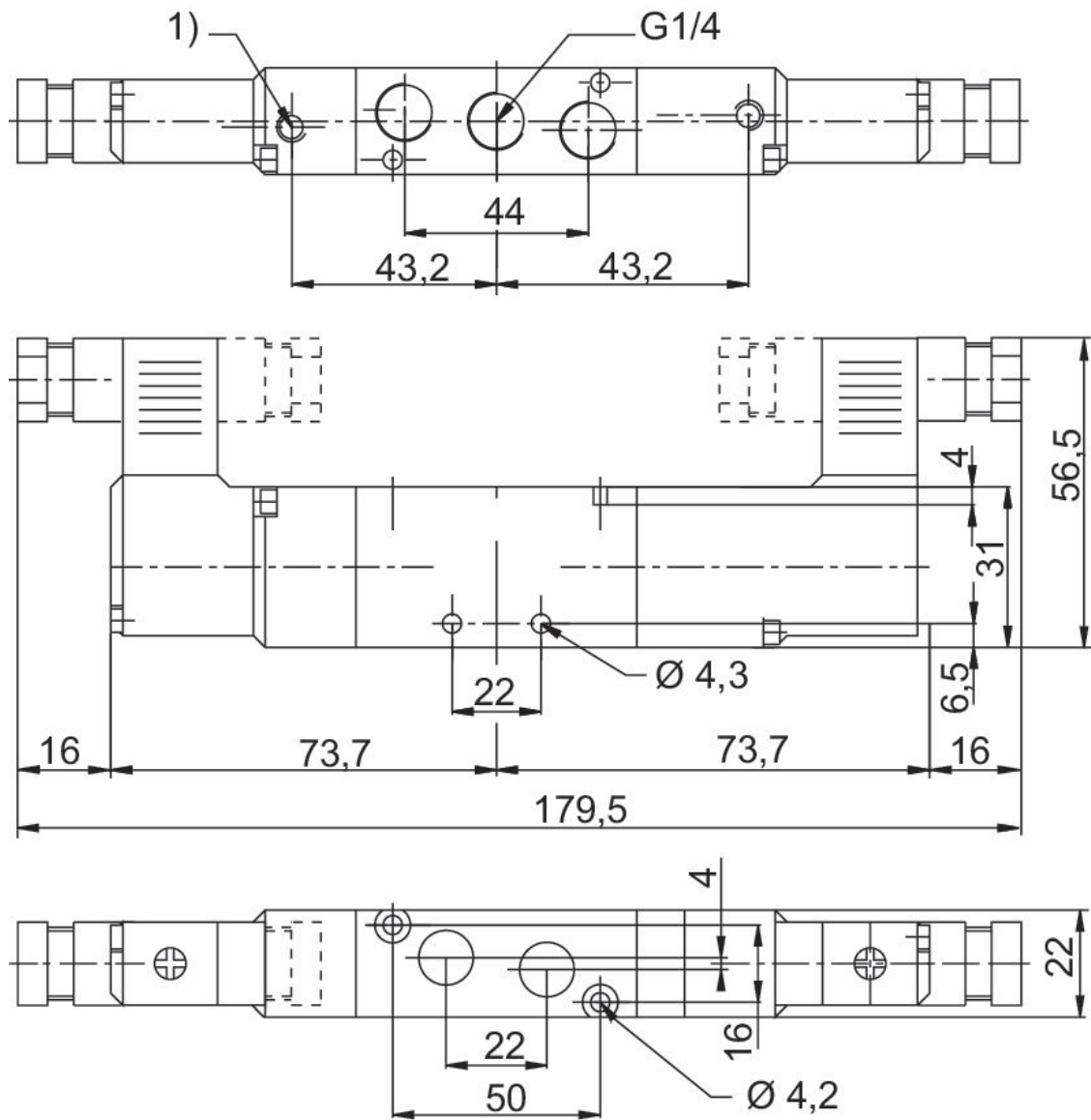
5/2-directional valve, Series 521

1050 l/min
Double Solenoid
Plug
EN 175301-803, form C
Internal thread
Electrically



Manual override	Switching principle	Operational voltage	Pilot	Power consumption DC [W]	Part No.
without detent	5/2, double solenoid	24 V AC	Internal		52100006
without detent	5/2, double solenoid	110 V AC	Internal		52100007
without detent	5/2, double solenoid	230 V AC	Internal		52100008
without detent	5/2, double solenoid	24 V DC	Internal	1.6	52100005

Dimensions



1) Pilot Exhaust

5/3-directional valve, Series 521

1050 l/min
Plug
EN 175301-803, form C
Internal thread
Electrically



Manual override	Valve function	Switching principle	Operational voltage	Pilot	Power consumption DC [W]	Part No.
without detent	Closed Center	5/3, closed center	24 V AC	Internal		52100010
without detent	Closed Center	5/3, closed center	110 V AC	Internal		52100011
without detent	Closed Center	5/3, closed center	230 V AC	Internal		52100012
without detent	Closed Center	5/3, closed center	24 V DC	Internal	1.6	52100009
without detent	Pressurized Center	5/3, pressurized center	24 V AC	Internal		52100126
without detent	Pressurized Center	5/3, pressurized center	110 V AC	Internal		52100127
without detent	Pressurized Center	5/3, pressurized center	230 V AC	Internal		52100128
without detent	Pressurized Center	5/3, pressurized center	24 V DC	Internal	1.6	52100129
without detent	Exhausted Center	5/3, exhausted center	24 V AC	Internal		52100087
without detent	Exhausted Center	5/3, exhausted center	110 V AC	Internal		52100088
without detent	Exhausted Center	5/3, exhausted center	230 V AC	Internal		52100089
without detent	Exhausted Center	5/3, exhausted center	24 V DC	Internal	1.6	52100090

Technical drawing of a mechanical component, showing three views: front, top, and side. The drawing includes dimensions in millimeters (mm).

Front View (Top):

- Overall length: 188,3
- Distance from left end to first hole center: 16
- Distance between first and second hole centers: 73,7
- Distance between second and third hole centers: 82,6
- Distance from third hole center to right end: 16
- Overall width: 56,5
- Distance from left end to first hole center (horizontal): 43,2
- Distance between first and second hole centers (horizontal): 44
- Distance between second and third hole centers (horizontal): 52,1
- Distance from third hole center to right end (horizontal): 4
- Thread specification: G1/4

Top View (Bottom):

- Overall length: 188,3
- Distance from left end to first hole center: 16
- Distance between first and second hole centers: 73,7
- Distance between second and third hole centers: 82,6
- Distance from third hole center to right end: 16
- Overall width: 56,5
- Distance from left end to first hole center (horizontal): 43,2
- Distance between first and second hole centers (horizontal): 44
- Distance between second and third hole centers (horizontal): 52,1
- Distance from third hole center to right end (horizontal): 4
- Thread specification: G1/4

Side View (Left):

- Overall length: 188,3
- Distance from left end to first hole center: 16
- Distance between first and second hole centers: 73,7
- Distance between second and third hole centers: 82,6
- Distance from third hole center to right end: 16
- Overall width: 56,5
- Distance from left end to first hole center (horizontal): 43,2
- Distance between first and second hole centers (horizontal): 44
- Distance between second and third hole centers (horizontal): 52,1
- Distance from third hole center to right end (horizontal): 4
- Thread specification: G1/4



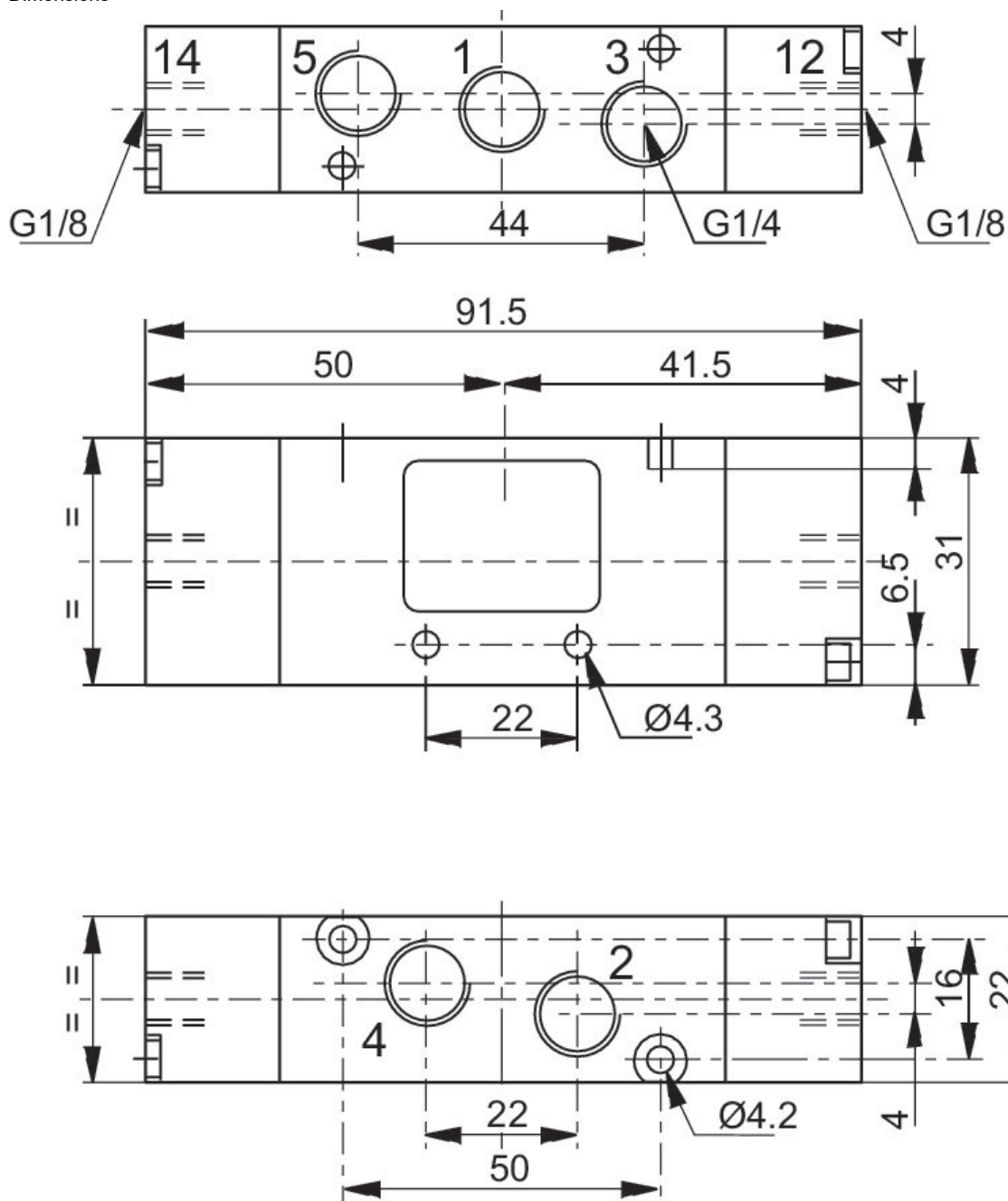

5/2-directional valve, Series 521

1050 l/min
Internal thread
Pneumatically



Compressed air connection input	Compressed air connection output	Min. control pressure [bar]	Max. control pressure [bar]	Pilot	Part No.
G 1/4	G 1/4	1.5	8	External	52100077

Dimensions

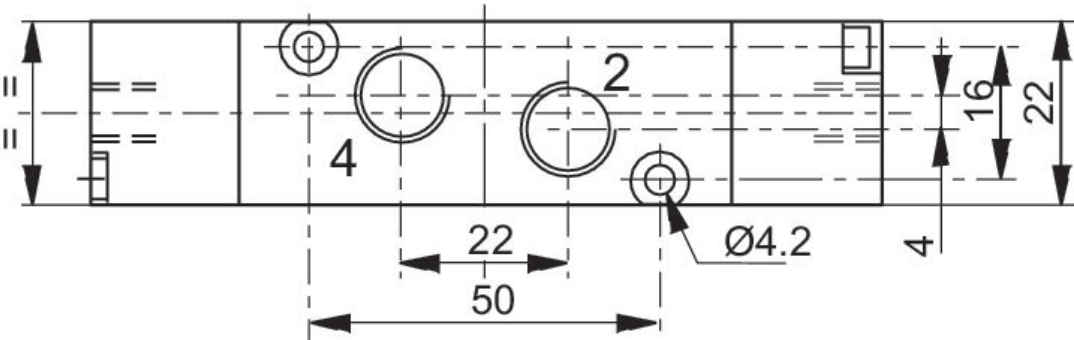
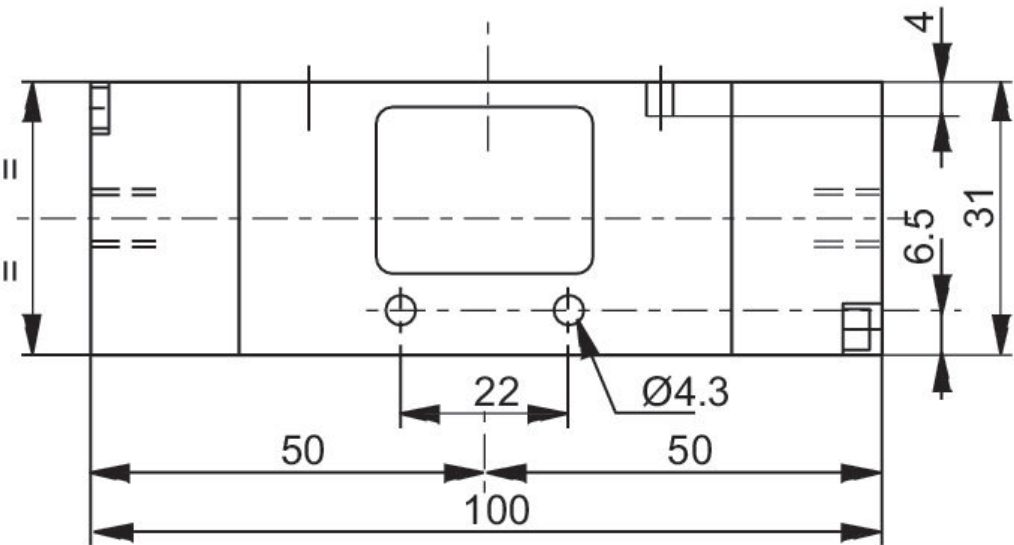
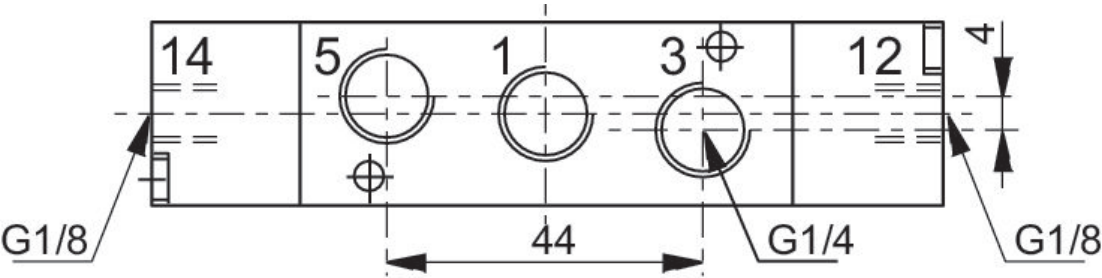


5/2-directional valve, Series 521

1050 l/min
Double Air Pilot
Internal thread
Pneumatically



Compressed air connection input	Compressed air connection output	Min. control pressure [bar]	Max. control pressure [bar]	Pilot	Part No.
G 1/4	G 1/4	1.5	8	External	52100078



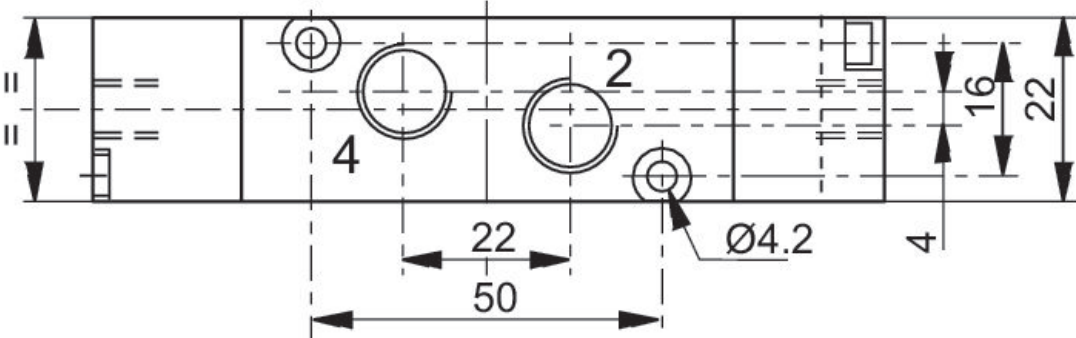
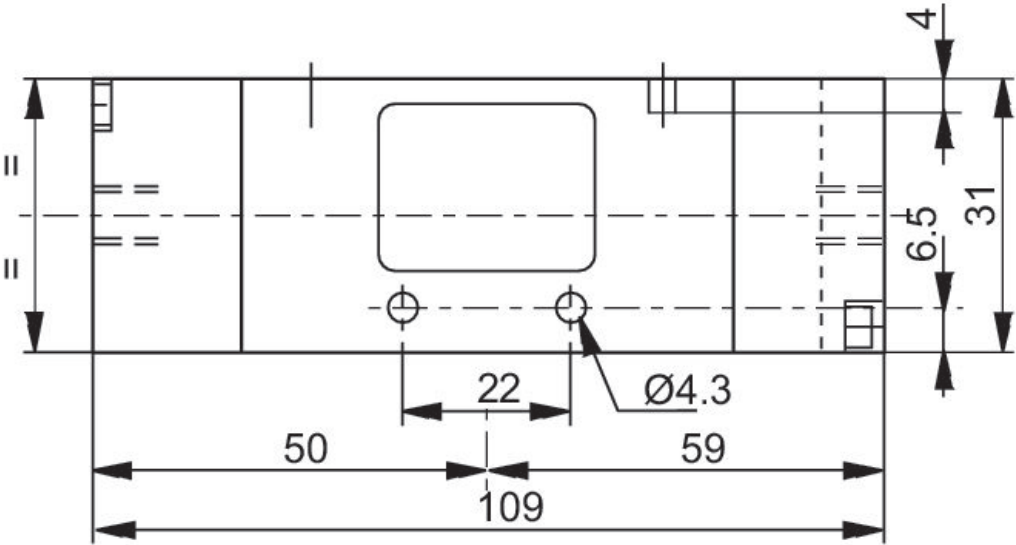
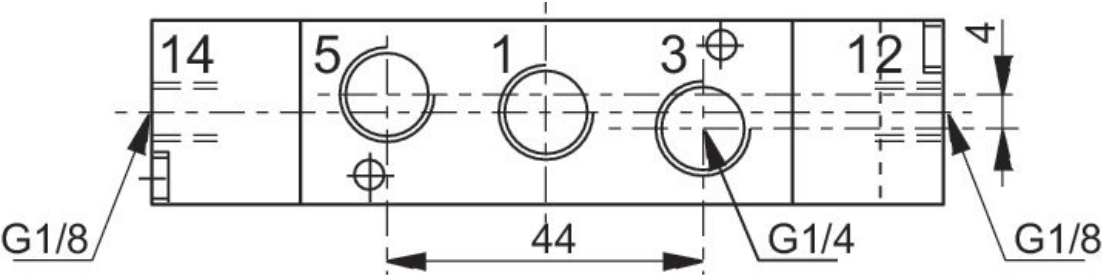
5/3-directional valve, Series 521

Internal thread
Pneumatically



Version	Compressed air connection input	Compressed air connection output	Min. control pressure [bar]	Max. control pressure [bar]	Pilot	Part No.
Closed Center	G 1/4	G 1/4	1.5	8	External	52100079
Pressurized Center	G 1/4	G 1/4	1.5	8	External	52100142
Exhausted Center	G 1/4	G 1/4	1.5	8	External	52100082

Dimensions



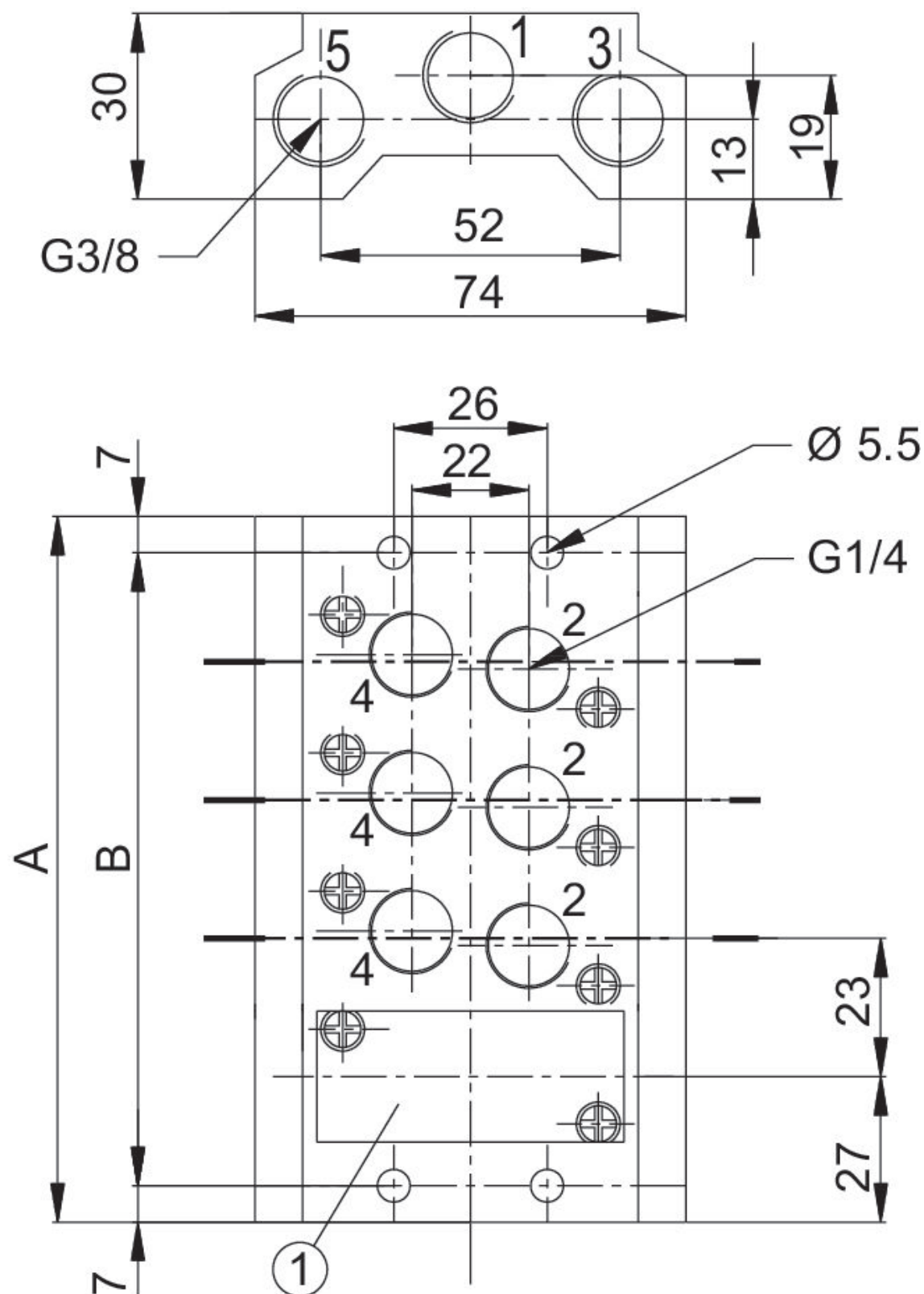
Base plate, Series 335

521



Compressed air connection input	Compressed air connection, exhaust	Max. number of valve positions	Part No.
G 3/8	G 3/8	2	35500342
G 3/8	G 3/8	3	35500343
G 3/8	G 3/8	4	35500344
G 3/8	G 3/8	5	35500345
G 3/8	G 3/8	6	35500346
G 3/8	G 3/8	7	35500347
G 3/8	G 3/8	8	35500348
G 3/8	G 3/8	9	35500349
G 3/8	G 3/8	10	35500350

Dimensions



1) Blanking plate

Part No.	A	B
35500342	77	63
35500343	100	86
35500344	123	109
35500345	146	132
35500346	169	155
35500347	192	178
35500348	215	201
35500349	238	224
35500350	261	247

Efficient pneumatic solutions, our program:
cylinders and drives, valves and valve systems,
air supply management



Visit us: [Emerson.com/Aventics](https://www.emerson.com/aventics)

Your local contact: [Emerson.com/contactus](https://www.emerson.com/contactus)



[Emerson.com](https://www.emerson.com)



[Facebook.com/EmersonAutomationSolutions](https://www.facebook.com/EmersonAutomationSolutions)



[LinkedIn.com/company/Emerson-Automation-Solutions](https://www.linkedin.com/company/Emerson-Automation-Solutions)



[Twitter.com/EMR_Automation](https://twitter.com/EMR_Automation)

An example configuration is depicted on the title page. The delivered product may thus vary from that in the illustration. Subject to change. This Document, as well as the data, specifications and other information set forth in it, are the exclusive property of AVENTICS GmbH. It may not be reproduced or given to third parties without its consent. Only use the AVENTICS products shown in industrial applications. Read the product documentation completely and carefully before using the product. Observe the applicable regulations and laws of the respective country. When integrating the product into applications, note the system manufacturer's specifications for safe use of the product. The data specified only serve to describe the product. No statements concerning a certain condition or suitability for a certain application can be derived from our information. The information given does not release the user from the obligation of own judgment and verification. It must be remembered that the products are subject to a natural process of wear and aging.

The Emerson logo is a trademark and service mark of Emerson Electric Co. Brand logotype are registered trademarks of one of the Emerson family of companies. All other marks are the property of their respective owners. © 2019 Emerson Electric Co. All rights reserved.



EMERSON™

CONSIDER IT SOLVED™