

系列 NR02



系列 NR02

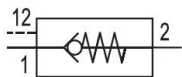
安沃驰 NR02 系列，连接选项多种多样，使 NR 系列单向阀可以单独拧入，也适合直接安装在管道。NR02 单向阀是一款气动先导操控产品

- $Q_n = 300 \text{ l/min} \dots 5800 \text{ l/min}$



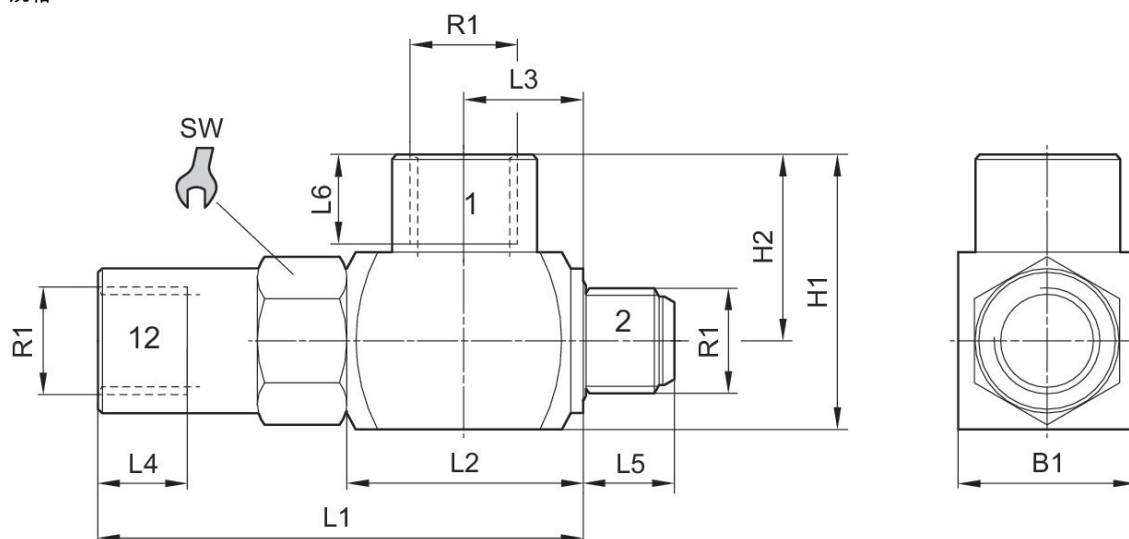
先导式单向阀, 系列 NR02

内螺纹
外螺纹



| 输入 | 类型 压缩空气接口 入口 | 输出 | Qn 1 > 2 [l/min] | 物料号 |
|-------|--------------|-------|---------------------|------------|
| G 1/8 | 外螺纹 | G 1/8 | 300 | 0821003050 |
| G 1/4 | 外螺纹 | G 1/4 | 680 | 0821003051 |

规格

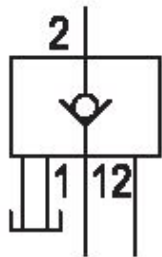


| | R1 | L1 | L2 | L3 | L4 | L5 | L6 | H1 | H2 | B1 |
|------------|-------|------|------|------|----|------|----|------|----|----|
| 0821003050 | G 1/8 | 50.5 | 25.4 | 12.7 | 8 | 7.5 | 8 | 24.5 | 16 | 17 |
| 0821003051 | G 1/4 | 59.6 | 29 | 14.5 | 12 | 11.4 | 12 | 34 | 23 | 22 |

| | SW |
|------------|----|
| 0821003050 | 15 |
| 0821003051 | 18 |

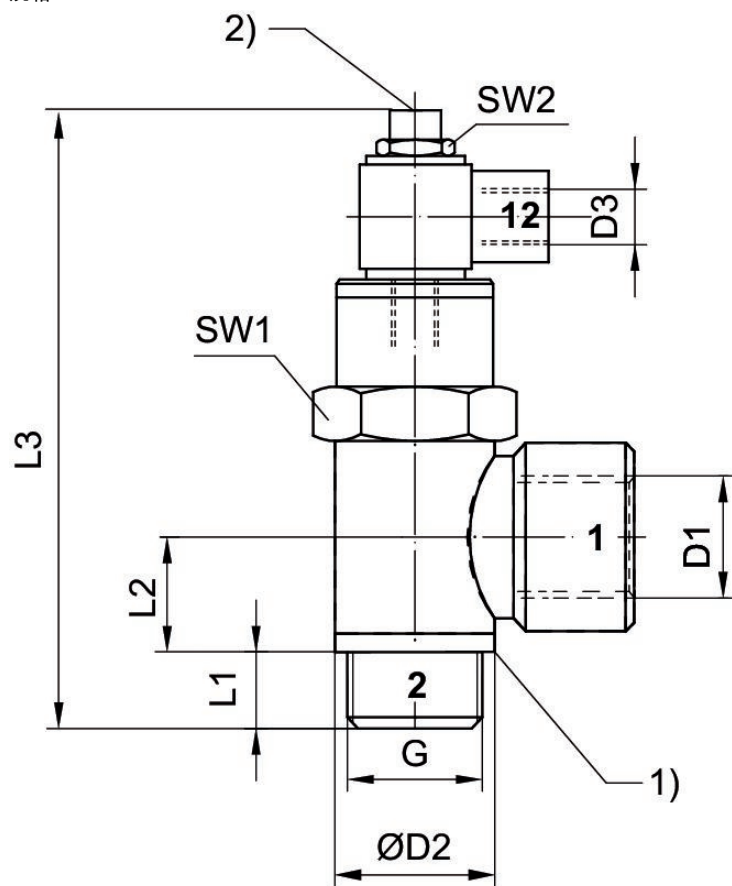
先导式单向阀, 系列 NR02

内螺纹
外螺纹



| 输入 | 类型 | 压缩空气接口 | 人口 | 输出 | Qn 1 > 2 [l/min] | 物料号 |
|-------|----|--------|-----|-------|---------------------|------------|
| G 1/8 | | | 外螺纹 | G 1/8 | 170 | 0821003045 |
| G 1/4 | | | 外螺纹 | G 1/4 | 345 | 0821003046 |

规格



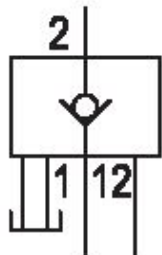
- 1) 密封件, 不遗失
- 2) 手动排气

| | G | D1 | D2 | D3 | L1 | L2 | L3 | SW1 | SW2 |
|------------|---|-------|----|----|----|-----|----|-----|-----|
| 0821003045 | | G 1/8 | 14 | M5 | 6 | 9.5 | 62 | 13 | 8 |

| | G | D1 | D2 | D3 | L1 | L2 | L3 | SW1 | SW2 |
|------------|---|-------|----|----|-----|------|----|-----|-----|
| 0821003046 | | G 1/4 | 18 | M5 | 8.2 | 10.3 | 67 | 17 | 8 |

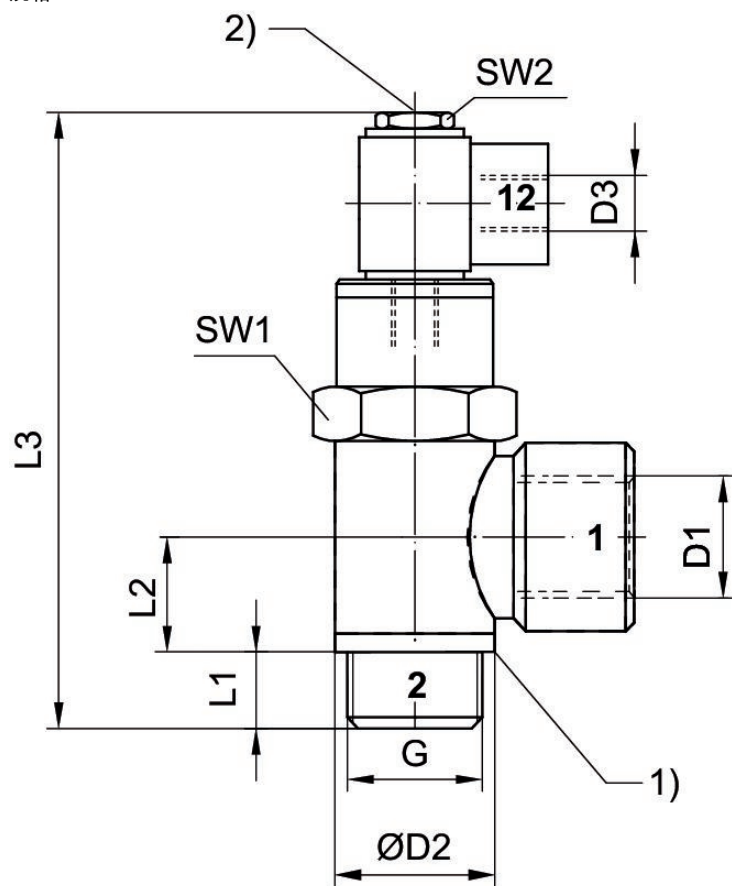
先导式单向阀, 系列 NR02

内螺纹
外螺纹



| 输入 | 类型 | 压缩空气 接口 入口 | 输出 | Qn 1 > 2 [l/min] | 物料号 |
|-------|----|------------|-------|---------------------|------------|
| G 3/8 | | 外螺纹 | G 3/8 | 1250 | 0821003047 |
| G 1/2 | | 外螺纹 | G 1/2 | 1800 | 0821003048 |

规格



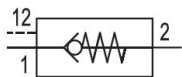
- 1) 密封件, 不遗失
- 2) 手动排气

| | G | D1 | D2 | D3 | L1 | L2 | L3 | SW1 | SW2 |
|------------|-------|-------|------|-------|----|----|------|-----|-----|
| 0821003047 | G 3/8 | G 3/8 | 21.8 | G 1/8 | 9 | 12 | 76.5 | 20 | 14 |

| | G | D1 | D2 | D3 | L1 | L2 | L3 | SW1 | SW2 |
|------------|-------|-------|------|-------|----|----|----|-----|-----|
| 0821003048 | G 1/2 | G 1/2 | 25.7 | G 1/8 | 10 | 14 | 85 | 25 | 14 |

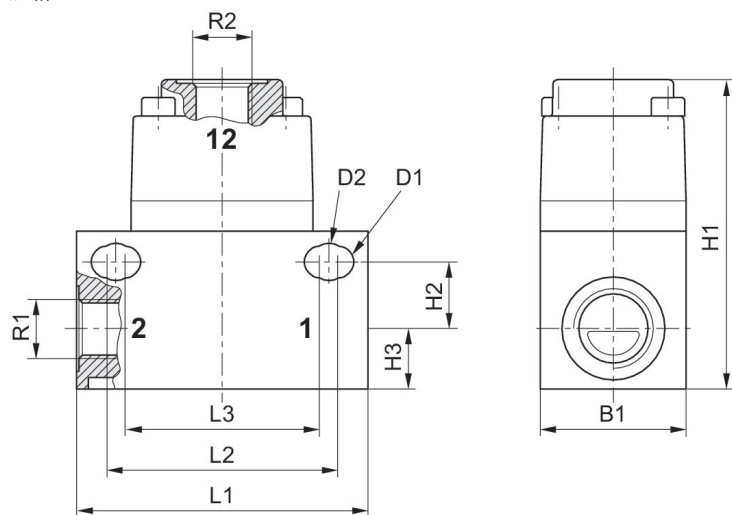
先导式单向阀, 系列 NR02

内螺纹
内螺纹



| 输入 | 类型 压缩空气接口 入口 | 输出 | Qn 1 > 2 [l/min] | 物料号 |
|-------|--------------|-------|---------------------|------------|
| G 1/8 | 内螺纹 | G 1/8 | 480 | 0821003025 |
| G 1/4 | 内螺纹 | G 1/4 | 510 | 0821003026 |

规格

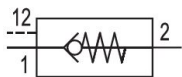


| | R1 | R2 | Ø D1 | Ø D2 | L1 | L2 | L3 | H1 | H2 | H3 |
|------------|-------|-------|------|------|----|----|----|----|----|----|
| 0821003025 | G 1/8 | G 1/8 | 5.2 | 6.1 | 48 | 38 | 32 | 51 | 11 | 10 |
| 0821003026 | G 1/4 | G 1/8 | 5.2 | 6.1 | 48 | 38 | 32 | 51 | 11 | 10 |

| | B1 |
|------------|----|
| 0821003025 | 24 |
| 0821003026 | 24 |

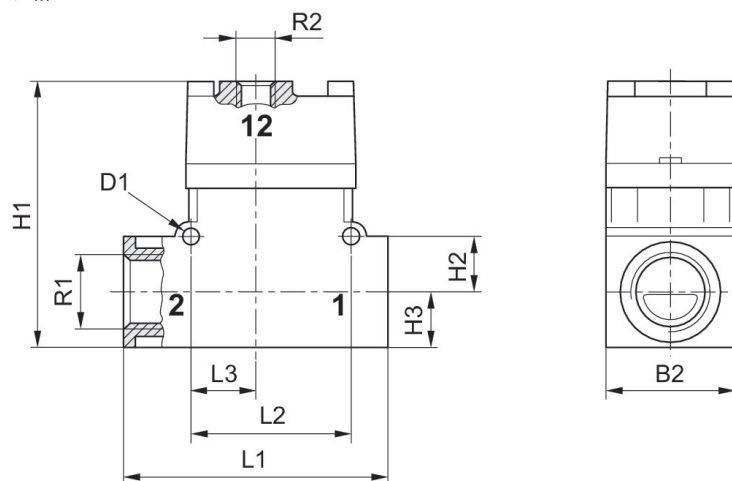
先导式单向阀, 系列 NR02

内螺纹
内螺纹



| 输入 | 类型 | 压缩空气接口 | 人口 | 输出 | Qn 1 > 2 [l/min] | 物料号 |
|-------|----|--------|----|-------|---------------------|------------|
| G 3/8 | | 内螺纹 | | G 3/8 | 2200 | 0821003027 |
| G 1/2 | | 内螺纹 | | G 1/2 | 2300 | 0821003028 |

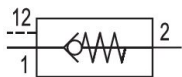
规格



| | R1 | R2 | Ø D1 | L1 | L2 | L3 | H1 | H2 | H3 | B1 |
|------------|-------|-------|------|----|----|----|----|----|----|----|
| 0821003027 | G 3/8 | G 1/8 | 4.3 | 72 | 44 | 18 | 72 | 15 | 15 | 35 |
| 0821003028 | G 1/2 | G 1/8 | 4.3 | 72 | 44 | 18 | 72 | 15 | 15 | 35 |

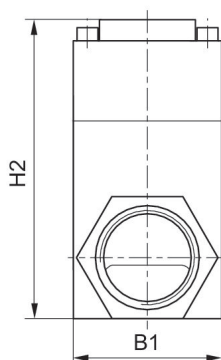
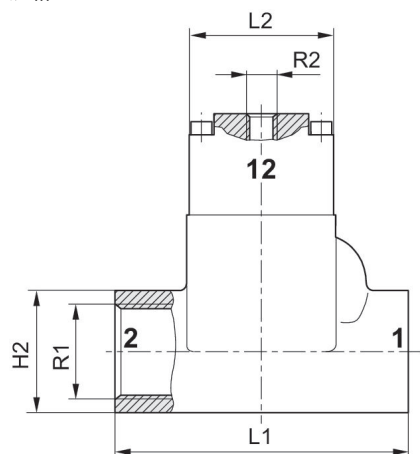
先导式单向阀, 系列 NR02

内螺纹
内螺纹



| 输入 | 类型 压缩空气接口 入口 | 输出 | $Q_n 1 > 2$ [l/min] | 物料号 |
|-------|--------------|-------|------------------------|------------|
| G 3/4 | 内螺纹 | G 3/4 | 4600 | 0821003029 |
| G 1 | 内螺纹 | G 1 | 5800 | 0821003030 |

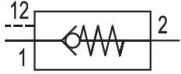
规格



| | R1 | R2 | L1 | L2 | H1 | H2 | B1 |
|------------|-------|-------|-----|----|----|-----|----|
| 0821003029 | G 3/4 | G 1/8 | 100 | 50 | 41 | 101 | 50 |
| 0821003030 | G 1 | G 1/8 | 100 | 50 | 41 | 101 | 50 |

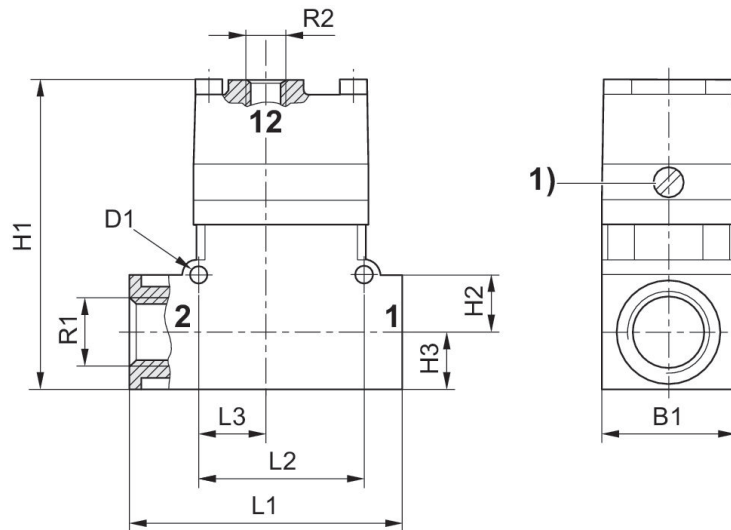
先导式单向阀, 系列 NR02

内螺纹
内螺纹



| 输入 | 类型 压缩空气 接口 入口 | 输出 | $Q_n 1 > 2$ [l/min] | 物料号 |
|-------|---------------|-------|------------------------|------------|
| G 3/8 | 内螺纹 | G 3/8 | 2400 | 0821003042 |

规格

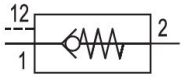


1) 手动控制装置

| | R1 | R2 | $\varnothing D1$ | L1 | L2 | L3 | H1 | H2 | H3 | B1 |
|------------|-------|-------|------------------|----|----|----|----|----|----|----|
| 0821003042 | G 3/8 | G 1/8 | 4.3 | 72 | 44 | 18 | 82 | 15 | 15 | 35 |

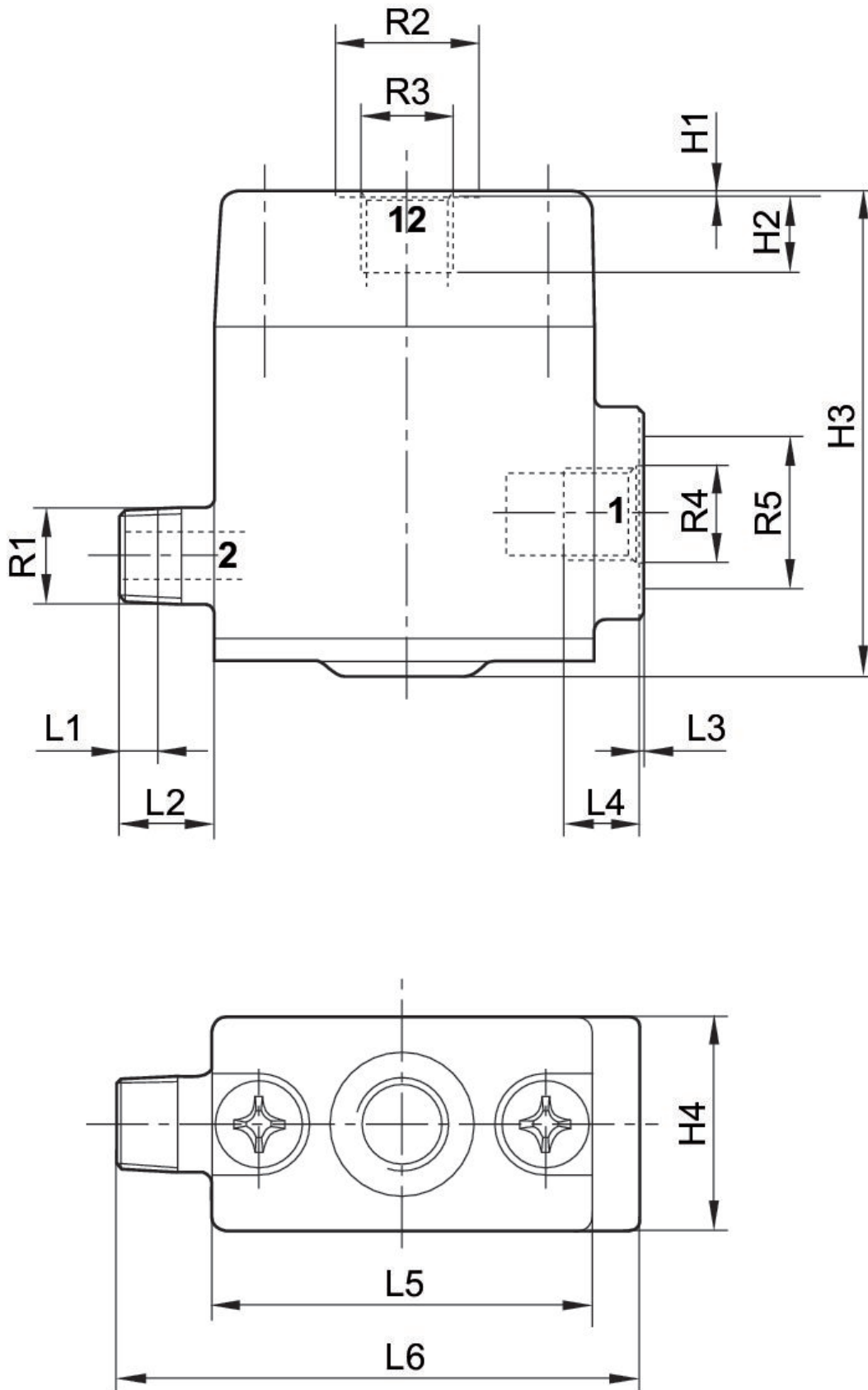
先导式单向阀, 系列 NR02

内螺纹
外螺纹



| 输入 | 类型 压缩空气接口 入口 | 输出 | Qn 1 > 2 [l/min] | 物料号 |
|-------|--------------|-------|---------------------|------------|
| G 1/8 | 外螺纹 | R 1/8 | 550 | 5340050010 |

规格

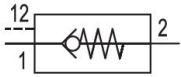


| | R1 | R2 | R3 | R4 | R5 | L1 | L2 | L3 | L4 | L5 |
|------------|------|----|------|------|----|----|----|-----|----|----|
| 5340050010 | R1/8 | 15 | G1/8 | G1/8 | 16 | 4 | 10 | 0.3 | 8 | 40 |

| | L6 | H1 | H2 | H3 | H4 |
|------------|----|-----|----|------|----|
| 5340050010 | 55 | 0.3 | 8 | 50.5 | 22 |

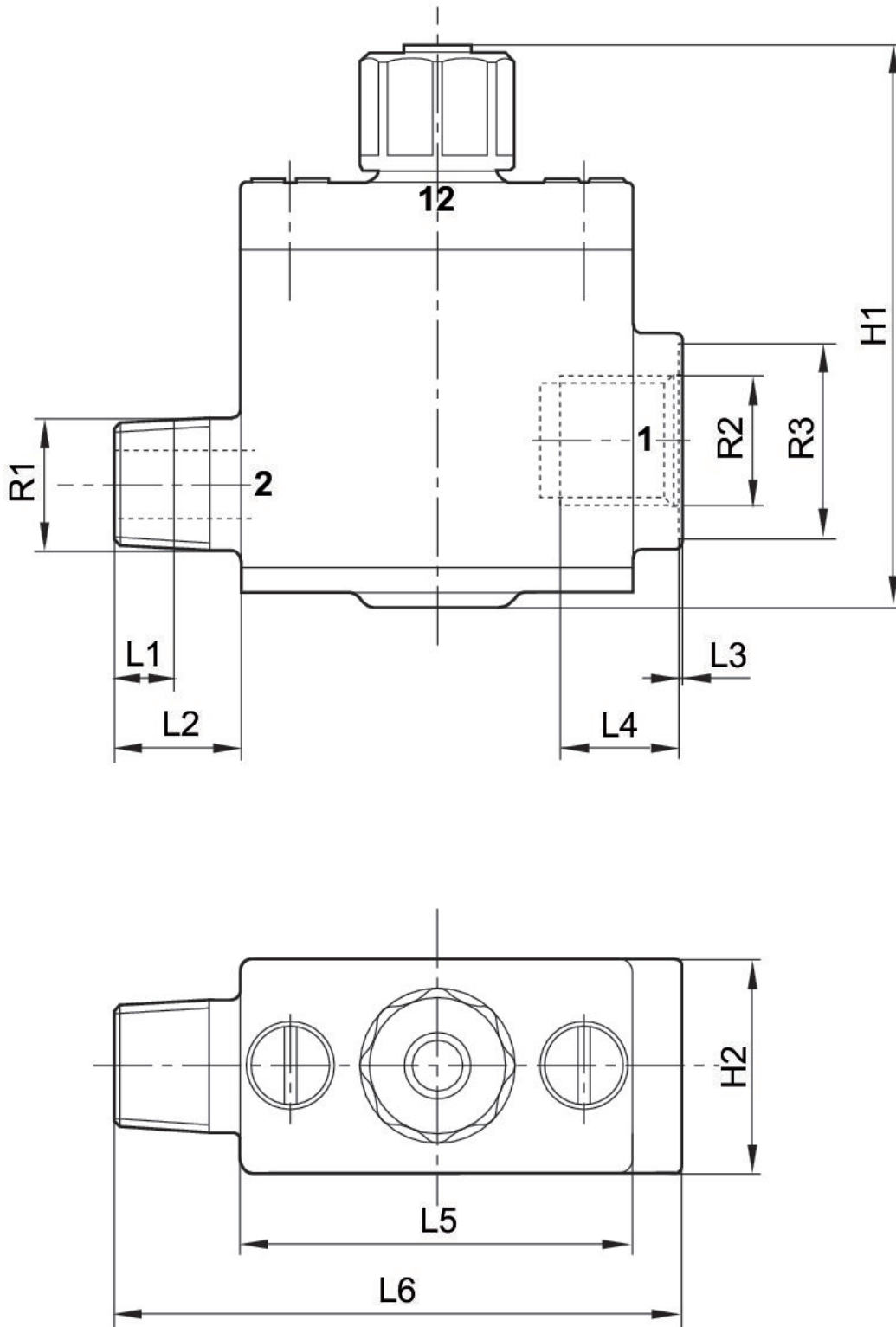
先导式单向阀, 系列 NR02

内螺纹
外螺纹



| 输入 | 类型 压缩空气接口 入口 | 输出 | Qn 1 > 2 [l/min] | 物料号 |
|-------|--------------|-------|---------------------|------------|
| G 1/4 | 外螺纹 | R 1/4 | 1000 | 5340051000 |

规格



| | R1 | R2 | R3 | L1 | L2 | L3 | L4 | L5 | L6 | H1 |
|------------|------|------|----|----|----|-----|----|----|----|------|
| 5340051000 | R1/4 | G1/4 | 20 | 6 | 13 | 0.3 | 12 | 40 | 58 | 57.5 |

| | H2 |
|------------|----|
| 5340051000 | 22 |

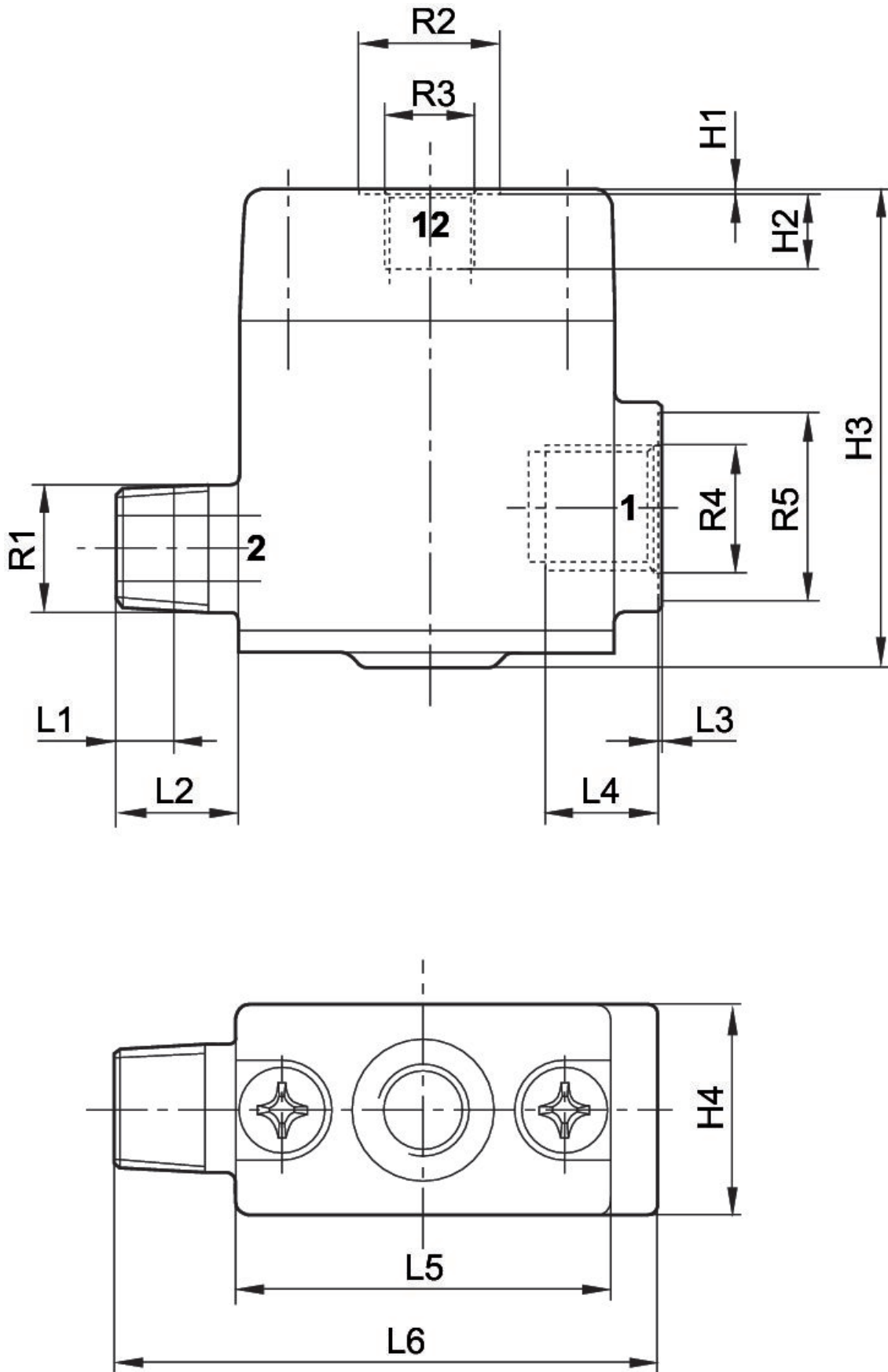
先导式单向阀, 系列 NR02

内螺纹
外螺纹



| 输入 | 类型 压缩空气接口 入口 | 输出 | Qn 1 > 2 [l/min] | 物料号 |
|-------|--------------|-------|---------------------|------------|
| G 1/4 | 外螺纹 | R 1/4 | 1000 | 5340051010 |

规格

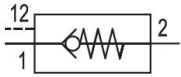


| | R1 | R2 | R3 | R4 | R5 | L1 | L2 | L3 | L4 | L5 |
|------------|------|----|------|------|----|----|----|-----|----|----|
| 5340051010 | R1/4 | 15 | G1/8 | G1/4 | 20 | 6 | 13 | 0.3 | 12 | 40 |

| | L6 | H1 | H2 | H3 | H4 |
|------------|----|-----|----|------|----|
| 5340051010 | 58 | 0.3 | 8 | 50.5 | 22 |

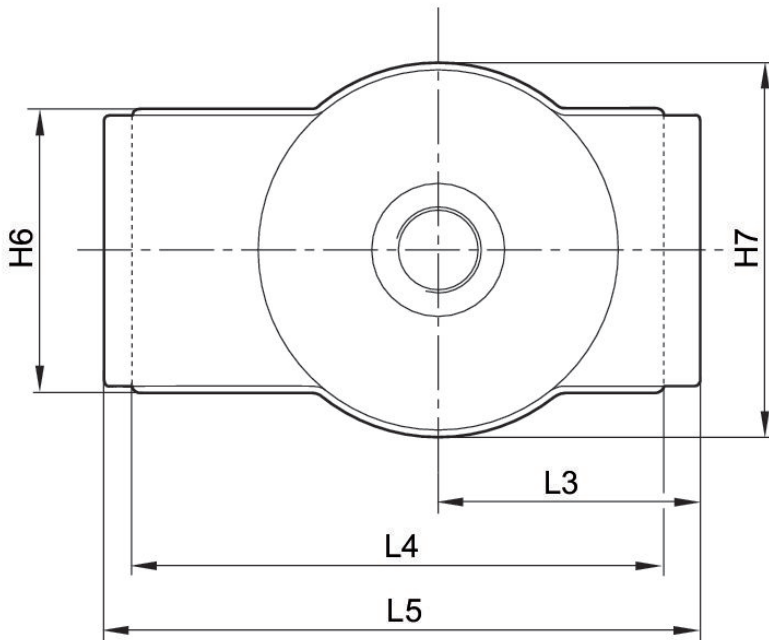
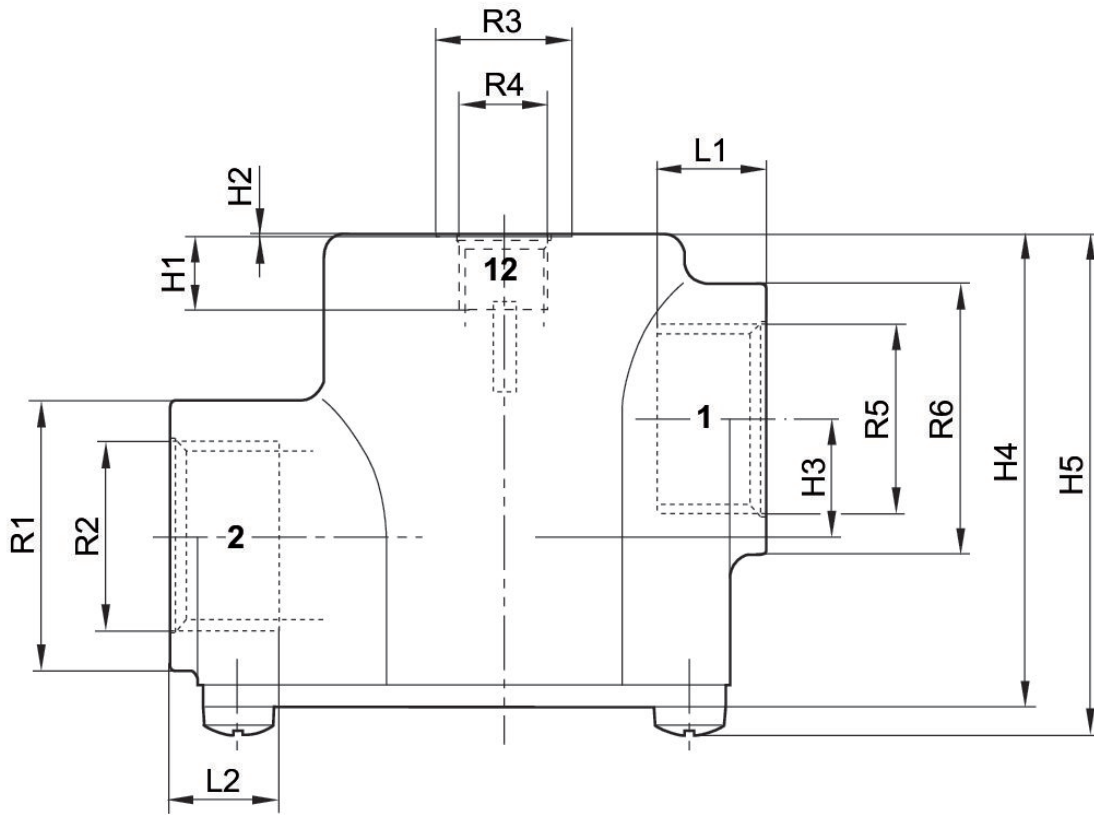
先导式单向阀, 系列 NR02

内螺纹
外螺纹



| 输入 | 类型 压缩空气接口 入口 | 输出 | Qn 1 > 2 [l/min] | 物料号 |
|-------|--------------|-------|---------------------|------------|
| G 1/2 | 外螺纹 | G 1/2 | 3000 | 5340053000 |

规格



| | R1 | R2 | R3 | R4 | R5 | R6 | L1 | L2 | L3 | L4 |
|------------|----|------|----|------|------|----|----|----|----|----|
| 5340053000 | 30 | G1/2 | 15 | G1/8 | G1/2 | 30 | 12 | 12 | 29 | 59 |

| | L5 | H1 | H2 | H3 | H4 | H5 | H6 | H7 |
|------------|----|----|-----|----|------|----|------|------|
| 5340053000 | 66 | 8 | 0.3 | 13 | 52.5 | 56 | 31.5 | 41.5 |

Efficient pneumatic solutions, our program: cylinders and drives, valves and valve systems, air supply management



Visit us: [Emerson.com/Aventics](https://www.emerson.com/Aventics)

Your local contact: [Emerson.com/contactus](https://www.emerson.com/contactus)



[Emerson.com](https://www.emerson.com)



[Facebook.com/EmersonAutomationSolutions](https://www.facebook.com/EmersonAutomationSolutions)



[LinkedIn.com/company/Emerson-Automation-Solutions](https://www.linkedin.com/company/Emerson-Automation-Solutions)



[Twitter.com/EMR_Automation](https://twitter.com/EMR_Automation)

An example configuration is depicted on the title page. The delivered product may thus vary from that in the illustration. Subject to change. This Document, as well as the data, specifications and other information set forth in it, are the exclusive property of AVENTICS GmbH. It may not be reproduced or given to third parties without its consent. Only use the AVENTICS products shown in industrial applications. Read the product documentation completely and carefully before using the product. Observe the applicable regulations and laws of the respective country. When integrating the product into applications, note the system manufacturer's specifications for safe use of the product. The data specified only serve to describe the product. No statements concerning a certain condition or suitability for a certain application can be derived from our information. The information given does not release the user from the obligation of own judgment and verification. It must be remembered that the products are subject to a natural process of wear and aging.

The Emerson logo is a trademark and service mark of Emerson Electric Co. Brand logotype are registered trademarks of one of the Emerson family of companies. All other marks are the property of their respective owners. © 2019 Emerson Electric Co. All rights reserved.



CONSIDER IT SOLVED™