

Série NR02



AVENTICS™

**Clapets anti-retour AVENTICS
série NR02**


EMERSON™

Série NR02

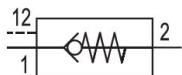
AVENTICS série NR02. Grâce à un large éventail d'options de raccordement, les clapets anti-retour NR peuvent être vissés séparément et ils peuvent également être installés directement sur les tuyauteries. Clapets anti-retour série NR02 avec pilotage pneumatique

- $Q_n = 300 \text{ l/min} \dots 5800 \text{ l/min}$



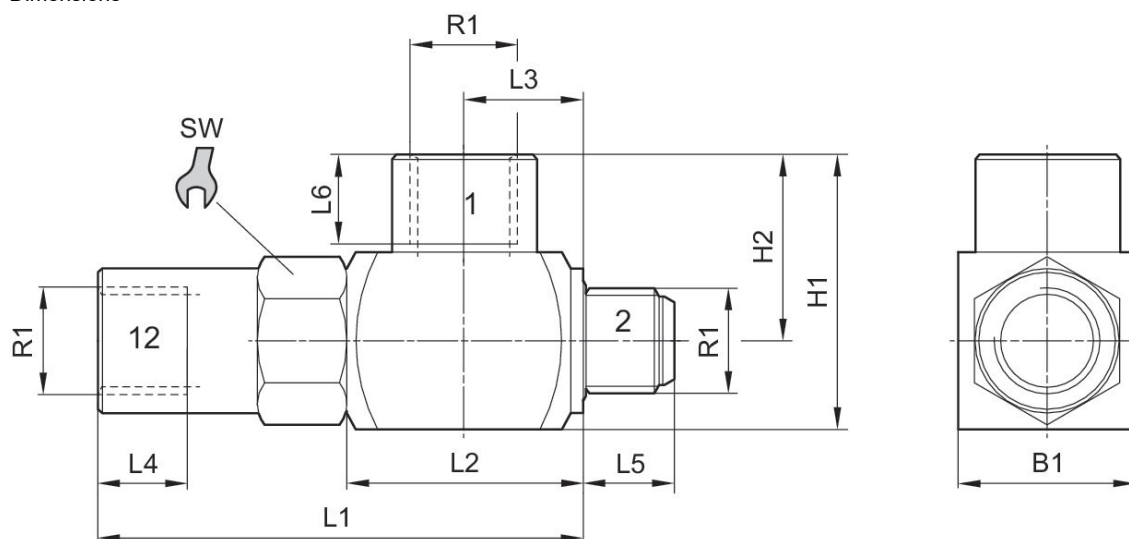
Clapet anti-retour piloté, Série NR02

Taraudage
Filetage



Entrée	Type de raccordement d'air comprimé entrée	Sortie	Qn 1 > 2 [l/min]	Référence
G 1/8	Filetage	G 1/8	300	0821003050
G 1/4	Filetage	G 1/4	680	0821003051

Dimensions



	R1	L1	L2	L3	L4	L5	L6	H1	H2	B1
0821003050	G 1/8	50.5	25.4	12.7	8	7.5	8	24.5	16	17
0821003051	G 1/4	59.6	29	14.5	12	11.4	12	34	23	22

	SW
0821003050	15
0821003051	18

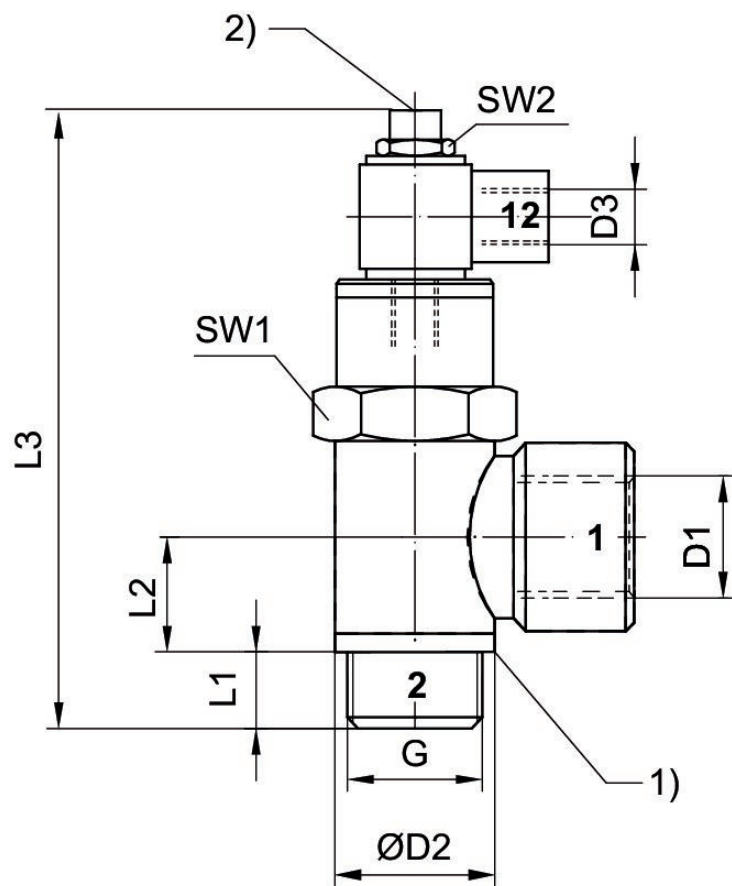
Clapet anti-retour piloté, Série NR02

Taroudage
Filetage



Entrée	Type de raccordement d'air comprimé entrée	Sortie	Qn 1 > 2 [l/min]	Référence
G 1/8	Filetage	G 1/8	170	0821003045
G 1/4	Filetage	G 1/4	345	0821003046

Dimensions



- 1) Joint, imperdable
- 2) Purge manuelle

	G	D1	D2	D3	L1	L2	L3	SW1	SW2
0821003045		G 1/8	14	M5	6	9.5	62	13	8

	G	D1	D2	D3	L1	L2	L3	SW1	SW2
0821003046		G 1/4	18	M5	8.2	10.3	67	17	8

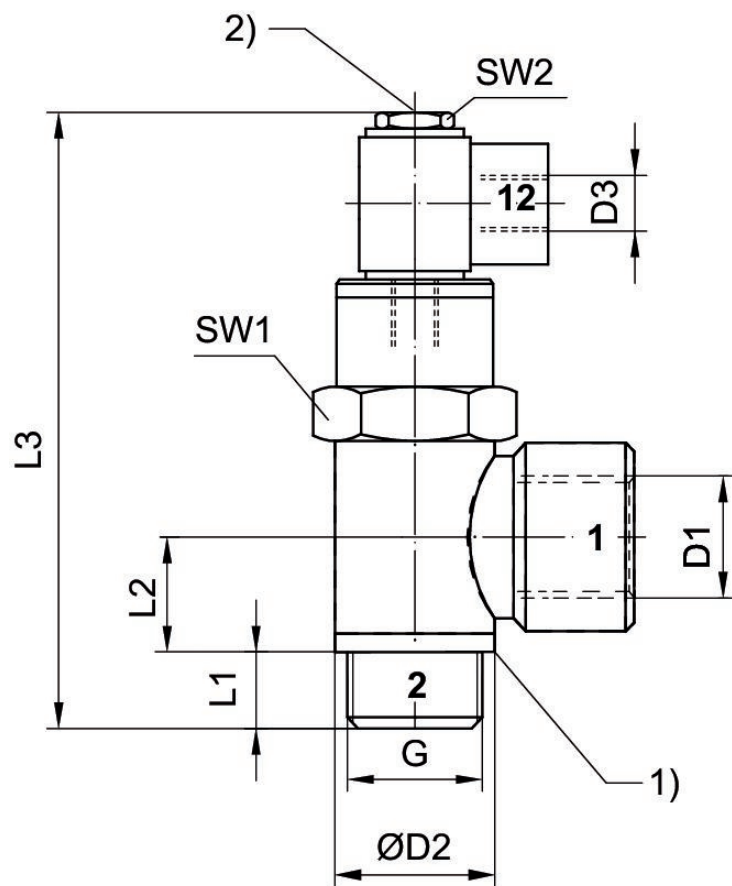
Clapet anti-retour piloté, Série NR02

Taraudage
Filetage



Entrée	Type de raccordement d'air comprimé entrée	Sortie	Qn 1 > 2 [l/min]	Référence
G 3/8	Filetage	G 3/8	1250	0821003047
G 1/2	Filetage	G 1/2	1800	0821003048

Dimensions



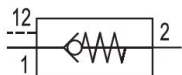
- 1) Joint, imperdable
- 2) Purge manuelle

	G	D1	D2	D3	L1	L2	L3	SW1	SW2
0821003047	G 3/8	G 3/8	21.8	G 1/8	9	12	76.5	20	14

	G	D1	D2	D3	L1	L2	L3	SW1	SW2
0821003048	G 1/2	G 1/2	25.7	G 1/8	10	14	85	25	14

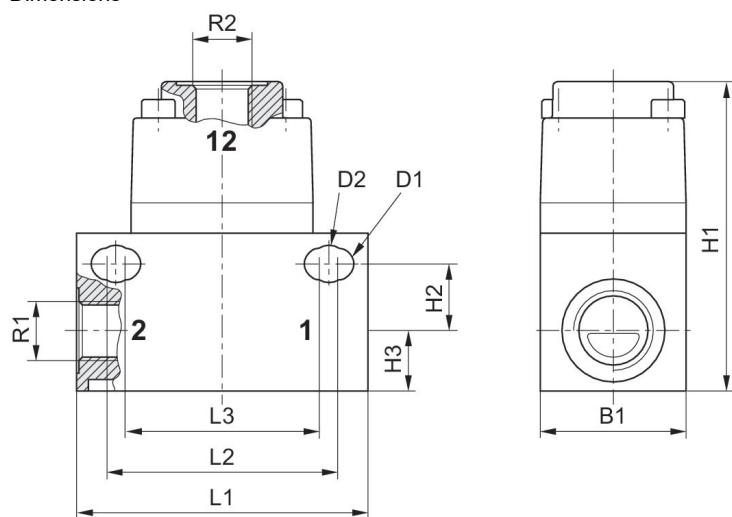
Clapet anti-retour piloté, Série NR02

Taraudage
Taraudage



Entrée	Type de raccordement d'air comprimé entrée	Sortie	Qn 1 > 2 [l/min]	Référence
G 1/8	Taraudage	G 1/8	480	0821003025
G 1/4	Taraudage	G 1/4	510	0821003026

Dimensions

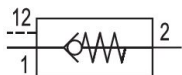


	R1	R2	Ø D1	Ø D2	L1	L2	L3	H1	H2	H3
0821003025	G 1/8	G 1/8	5.2	6.1	48	38	32	51	11	10
0821003026	G 1/4	G 1/8	5.2	6.1	48	38	32	51	11	10

	B1
0821003025	24
0821003026	24

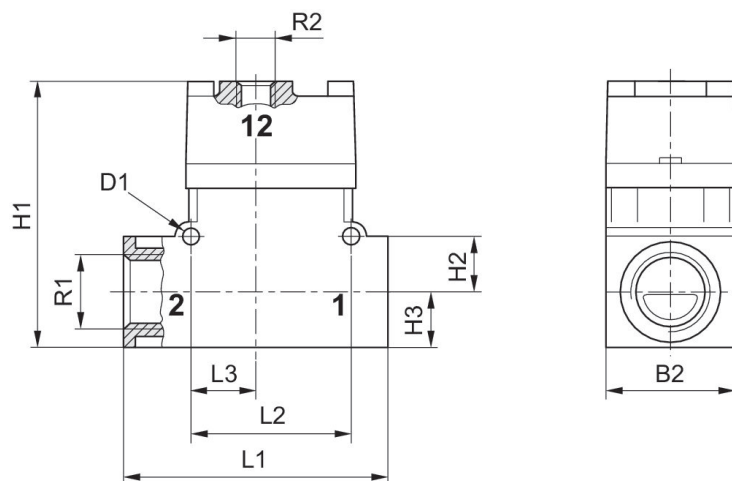
Clapet anti-retour piloté, Série NR02

Taraudage
Taraudage



Entrée	Type de raccordement d'air comprimé entrée	Sortie	Qn 1 > 2 [l/min]	Référence
G 3/8	Taraudage	G 3/8	2200	0821003027
G 1/2	Taraudage	G 1/2	2300	0821003028

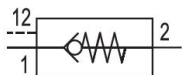
Dimensions



	R1	R2	Ø D1	L1	L2	L3	H1	H2	H3	B1
0821003027	G 3/8	G 1/8	4.3	72	44	18	72	15	15	35
0821003028	G 1/2	G 1/8	4.3	72	44	18	72	15	15	35

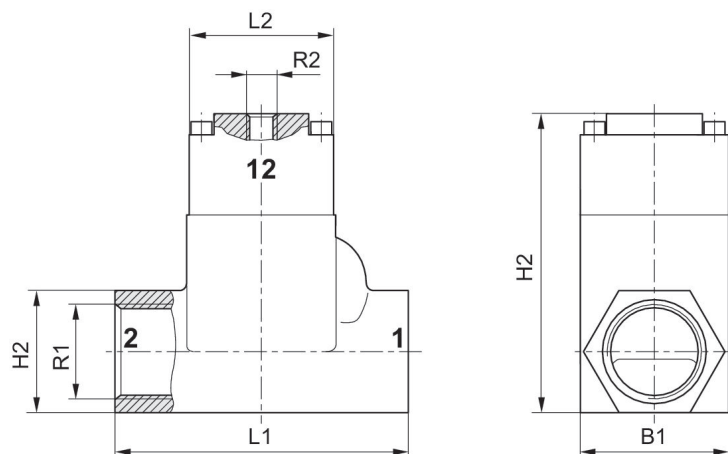
Clapet anti-retour piloté, Série NR02

Taraudage
Taraudage



Entrée	Type de raccordement d'air comprimé entrée	Sortie	Qn 1 > 2 [l/min]	Référence
G 3/4	Taraudage	G 3/4	4600	0821003029
G 1	Taraudage	G 1	5800	0821003030

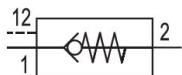
Dimensions



	R1	R2	L1	L2	H1	H2	B1
0821003029	G 3/4	G 1/8	100	50	41	101	50
0821003030	G 1	G 1/8	100	50	41	101	50

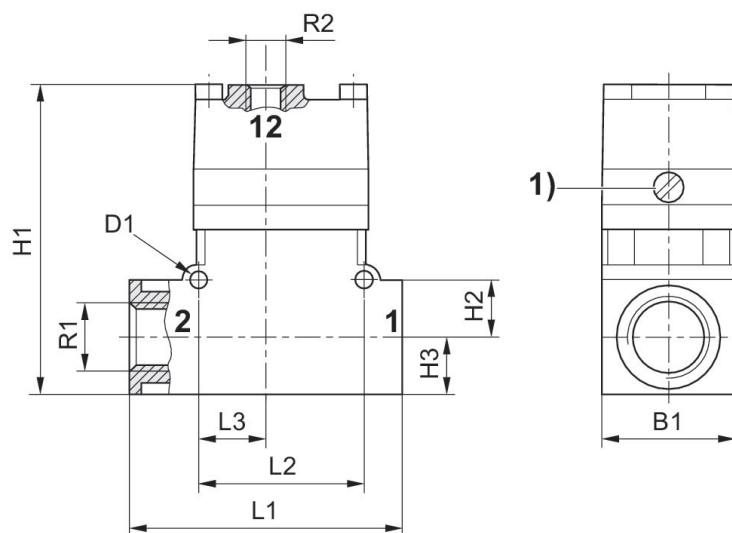
Clapet anti-retour piloté, Série NR02

Taraudage
Taraudage



Entrée	Type de raccordement d'air comprimé entrée	Sortie	Qn 1 > 2 [l/min]	Référence
G 3/8	Taraudage	G 3/8	2400	0821003042

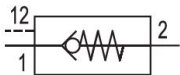
Dimensions



1) Commande manuelle

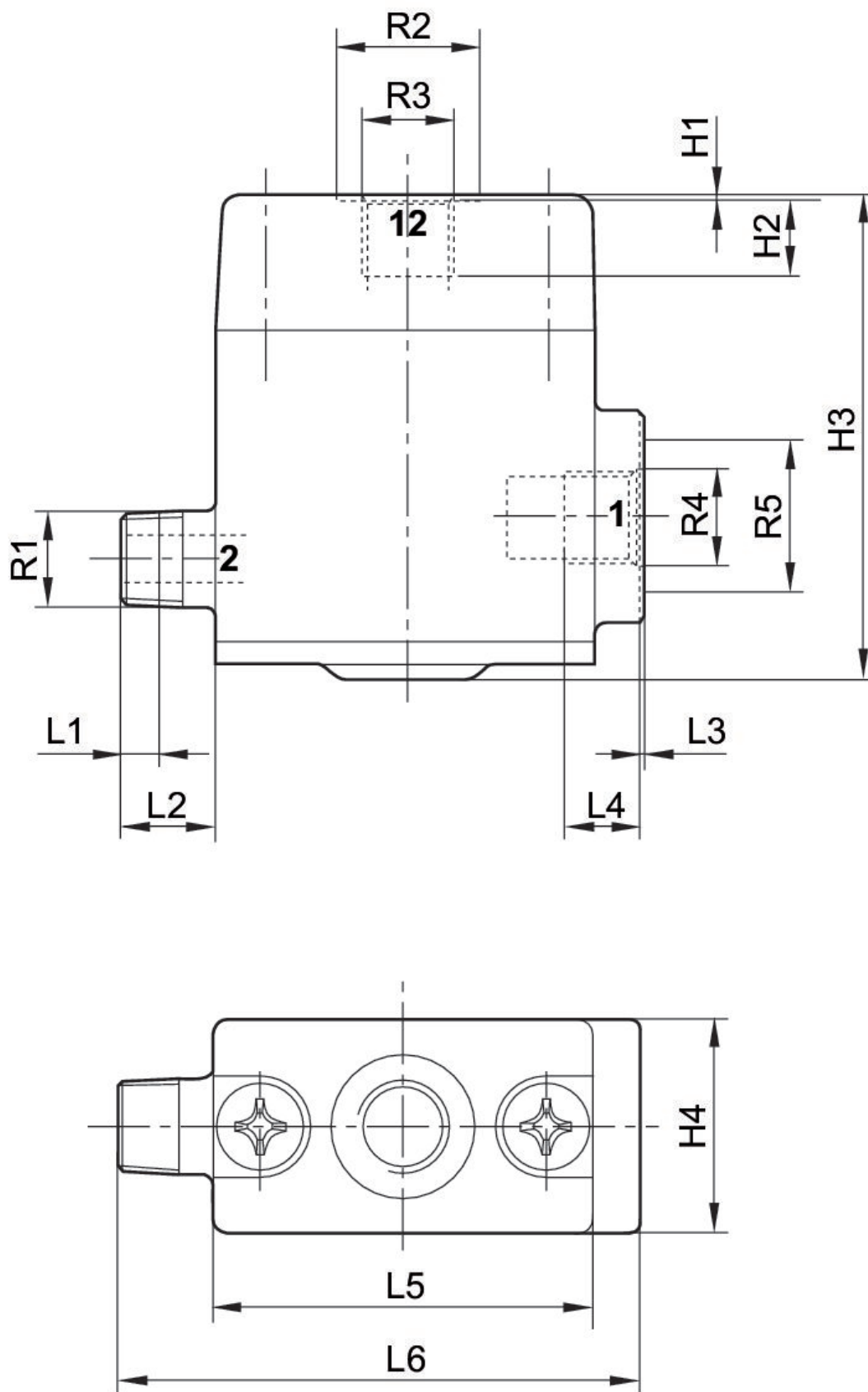
	R1	R2	Ø D1	L1	L2	L3	H1	H2	H3	B1
0821003042	G 3/8	G 1/8	4.3	72	44	18	82	15	15	35

Clapet anti-retour piloté, Série NR02

Taraudage
Filetage

Entrée	Type de raccordement d'air comprimé entrée	Sortie	Qn 1 > 2 [l/min]	Référence
G 1/8	Filetage	R 1/8	550	5340050010

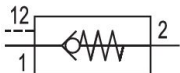
Dimensions



	R1	R2	R3	R4	R5	L1	L2	L3	L4	L5
5340050010	R1/8	15	G1/8	G1/8	16	4	10	0.3	8	40

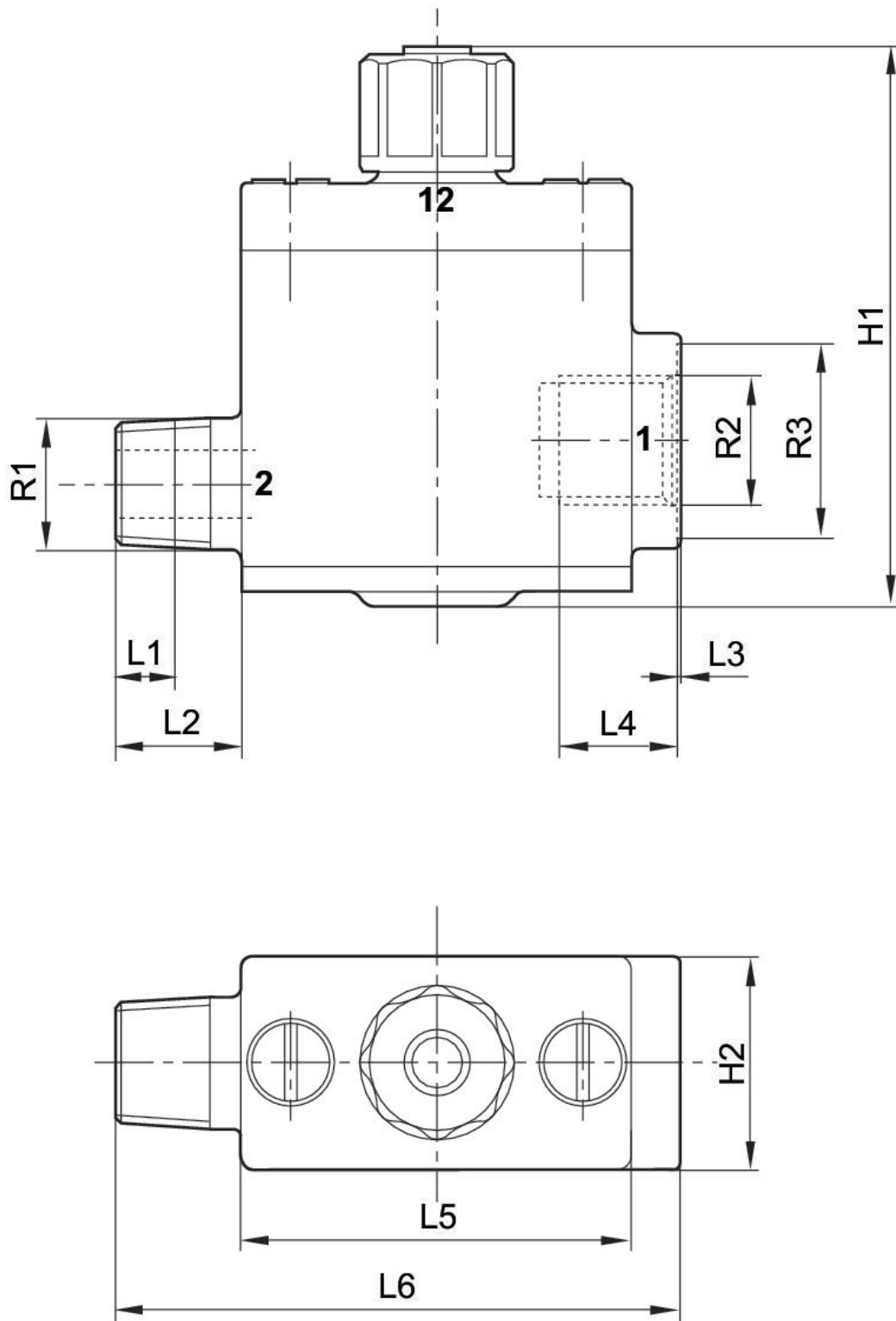
	L6	H1	H2	H3	H4
5340050010	55	0.3	8	50.5	22

Clapet anti-retour piloté, Série NR02

Taraudage
Filetage

Entrée	Type de raccordement d'air comprimé entrée	Sortie	Qn 1 > 2 [l/min]	Référence
G 1/4	Filetage	R 1/4	1000	5340051000

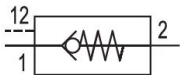
Dimensions



	R1	R2	R3	L1	L2	L3	L4	L5	L6	H1
5340051000	R1/4	G1/4	20	6	13	0.3	12	40	58	57.5

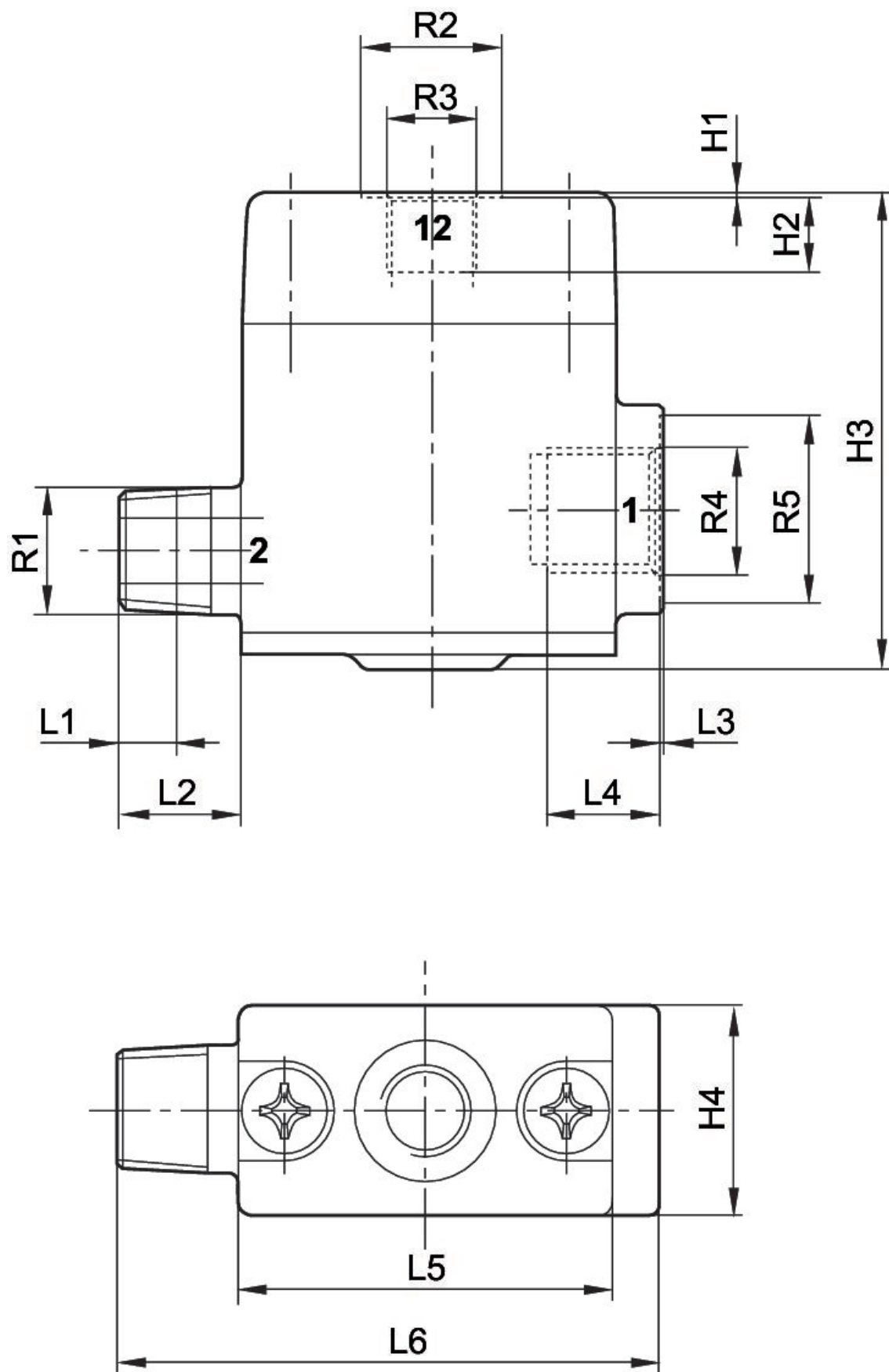
	H2
5340051000	22

Clapet anti-retour piloté, Série NR02

Taraudage
Filetage

Entrée	Type de raccordement d'air comprimé entrée	Sortie	Qn 1 > 2 [l/min]	Référence
G 1/4	Filetage	R 1/4	1000	5340051010

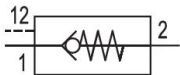
Dimensions



	R1	R2	R3	R4	R5	L1	L2	L3	L4	L5
5340051010	R1/4	15	G1/8	G1/4	20	6	13	0.3	12	40

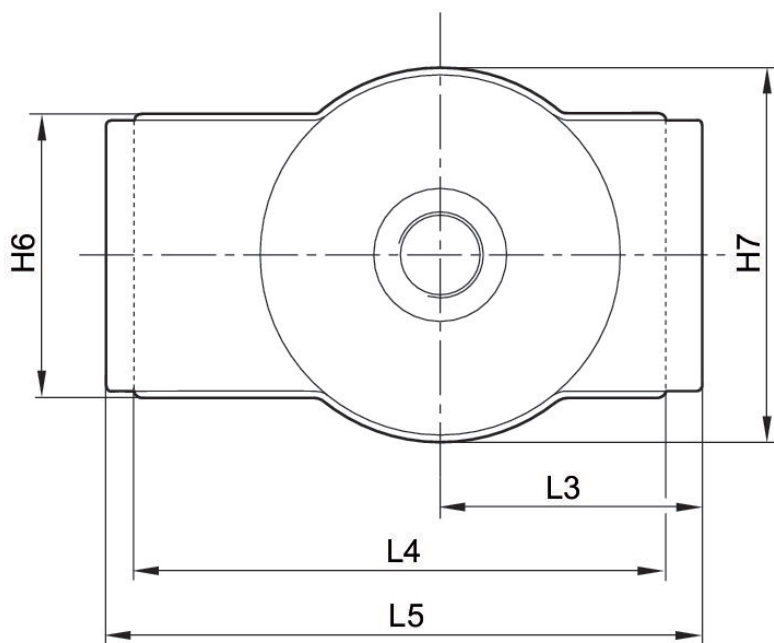
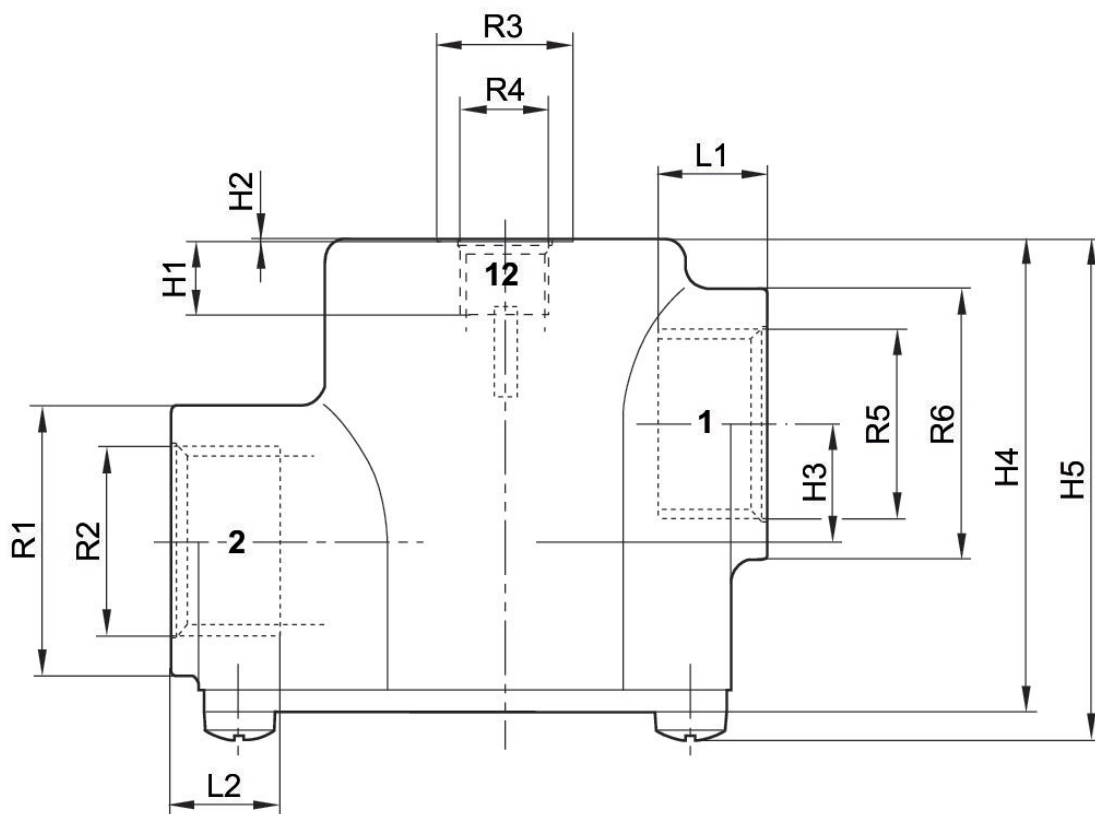
	L6	H1	H2	H3	H4
5340051010	58	0.3	8	50.5	22

Clapet anti-retour piloté, Série NR02

Taraudage
Filetage

Entrée	Type de raccordement d'air comprimé entrée	Sortie	Qn 1 > 2 [l/min]	Référence
G 1/2	Filetage	G 1/2	3000	5340053000

Dimensions



	R1	R2	R3	R4	R5	R6	L1	L2	L3	L4
5340053000	30	G1/2	15	G1/8	G1/2	30	12	12	29	59

	L5	H1	H2	H3	H4	H5	H6	H7
5340053000	66	8	0.3	13	52.5	56	31.5	41.5

Efficient pneumatic solutions, our program: cylinders and drives, valves and valve systems, air supply management



Visit us: [Emerson.com/Aventics](https://www.emerson.com/aventics)

Your local contact: [Emerson.com/contactus](https://www.emerson.com/contactus)



[Emerson.com](https://www.emerson.com)



[Facebook.com/EmersonAutomationSolutions](https://www.facebook.com/EmersonAutomationSolutions)



[LinkedIn.com/company/Emerson-Automation-Solutions](https://www.linkedin.com/company/Emerson-Automation-Solutions)



[Twitter.com/EMR_Automation](https://twitter.com/EMR_Automation)

An example configuration is depicted on the title page. The delivered product may thus vary from that in the illustration. Subject to change. This Document, as well as the data, specifications and other information set forth in it, are the exclusive property of AVENTICS GmbH. It may not be reproduced or given to third parties without its consent. Only use the AVENTICS products shown in industrial applications. Read the product documentation completely and carefully before using the product. Observe the applicable regulations and laws of the respective country. When integrating the product into applications, note the system manufacturer's specifications for safe use of the product. The data specified only serve to describe the product. No statements concerning a certain condition or suitability for a certain application can be derived from our information. The information given does not release the user from the obligation of own judgment and verification. It must be remembered that the products are subject to a natural process of wear and aging.

The Emerson logo is a trademark and service mark of Emerson Electric Co. Brand logotype are registered trademarks of one of the Emerson family of companies. All other marks are the property of their respective owners. © 2019 Emerson Electric Co. All rights reserved.



CONSIDER IT SOLVED™