

Series CH01



AVENTICS™

**AVENTICS Series CH01 Throttle
valves**


EMERSON™

Series CH01

Series CH throttle valves can be used for nominal flows up to 2,800 l/min. The Series features special versions with integrated silencer and screw-in variants.

- $Q_n = 38 \text{ l/min} \dots 2800 \text{ l/min}$



Product overview

Throttle valve

	Page
Series CH01 with protective cap.....	4
Series CH01.....	6

Accessories CH01

Protective cap.....	8
Hexagonal nut for panel installation.....	9

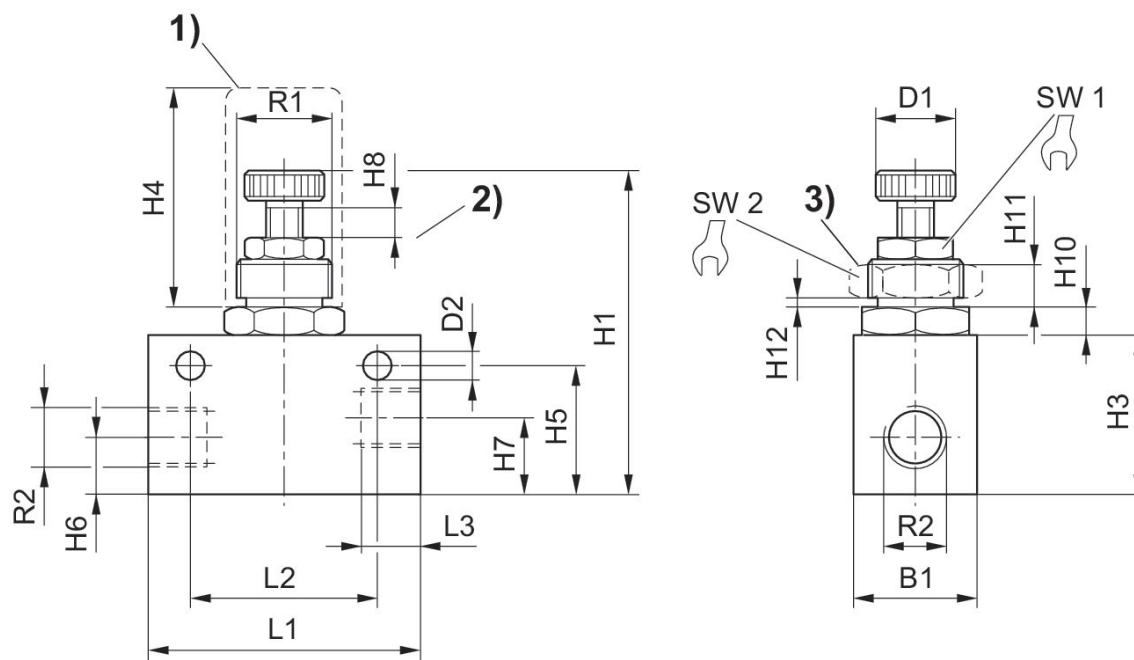
Series CH01 with protective cap

Compressed air connection type: Internal thread
 Compressed air connection type 2: Internal thread
 Ambient temperature min./max.: 0 °C ... 80 °C
 Medium temperature min./max.: 0 °C ... 80 °C
 Working pressure min./max.: 0 bar ... 10 bar



Compressed air connection 1	Compressed air connection 2	Nominal flow [l/min]	Housing material	Part No.
G 1/8	G 1/8	38	Aluminum	0821201010
G 1/8	G 1/8	140	Aluminum	0821201004
G 1/4	G 1/4	700	Aluminum	0821201011

Dimensions



1) protective cap 2) throttle setting range 3) nut for control panel installation

Part No.	Port G	R1	R2	B1	D1	D2	H1	H3	H4
0821201010	G 1/8	M12x1	G 1/8	16	9,8	4,5	56	20	35
0821201004	G 1/8	M12x1	G 1/8	16	9,8	4,5	56	20	35
0821201011	G 1/4	M20x1,5	G 1/4	25	15	5,5	70	32	40

Part No.	H5	H6	H7	H8	H10	H11	H12	L1	L2
0821201010	16.5	8	8	4	4,2	4	0	35	25
0821201004	16.5	8	8	4	4,2	4	0	35	25
0821201011	26	15	11	5	5,5	6	0	55	38

Part No.	L3	SW1	SW2
0821201010	8	10	17
0821201004	8	10	17
0821201011	12	13	24

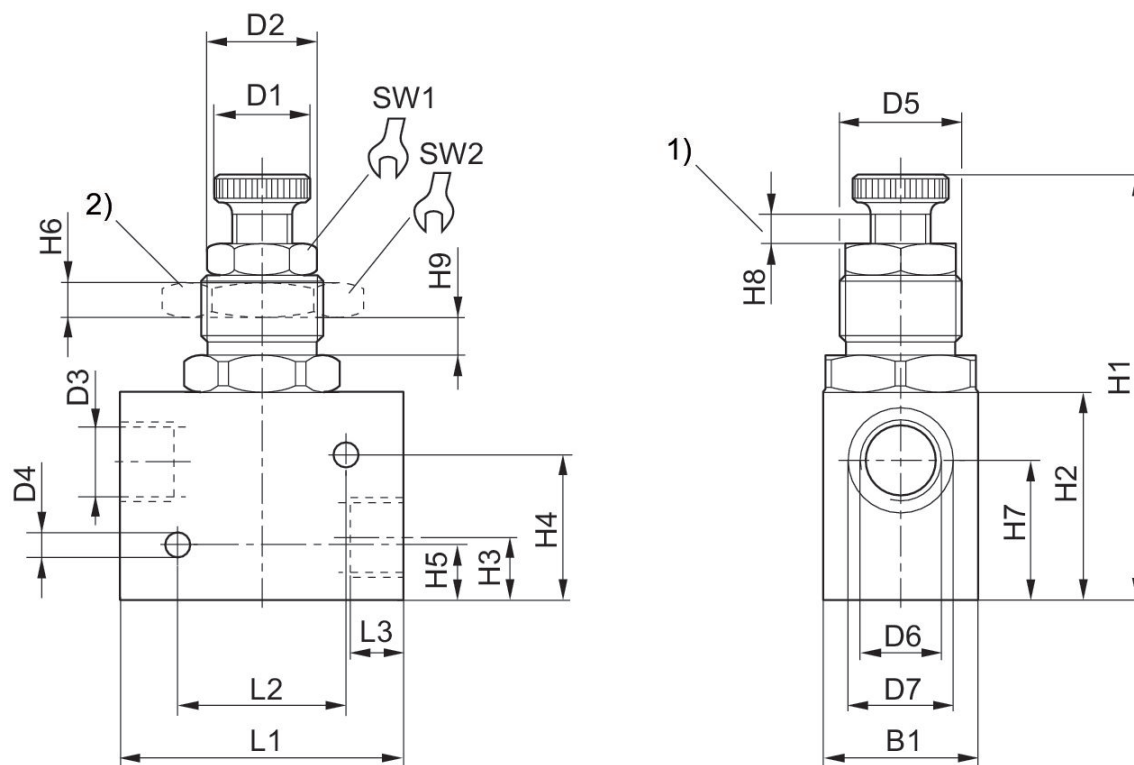
Series CH01

Compressed air connection type: Internal thread
 Compressed air connection type 2: Internal thread
 Ambient temperature min./max.: 0 °C ... 80 °C
 Medium temperature min./max.: 0 °C ... 80 °C
 Working pressure min./max.: 0 bar ... 10 bar



Compressed air connection 1	Compressed air connection 2	Nominal flow [l/min]	Housing material	Part No.
G 1/2	G 1/2	2800	Aluminum	0821201006

Dimensions



1) throttle setting range 2) nut for control panel installation

Part No.	Port G	D1	D2	D3	D4	D5	D6	D7	B1
0821201006	G 1/2	27	27,5	19	6,5	M32x1,5	G1/2	27	40

Part No.	H1	H2	H3	H4	H5	H6	H7	H8	H9
0821201006	120	50	17	40.5	15.5	9	38	8	9

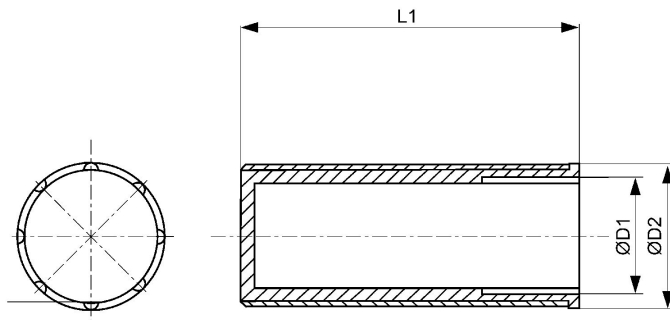
Part No.	L1	L2	L3	SW1	SW2
0821201006	75.3	45	14	24	46

Protective cap



Delivery unit [piece]	Weight [kg]	Part No.
10	0.002	1823317003
10	0.004	1823317002

Dimensions



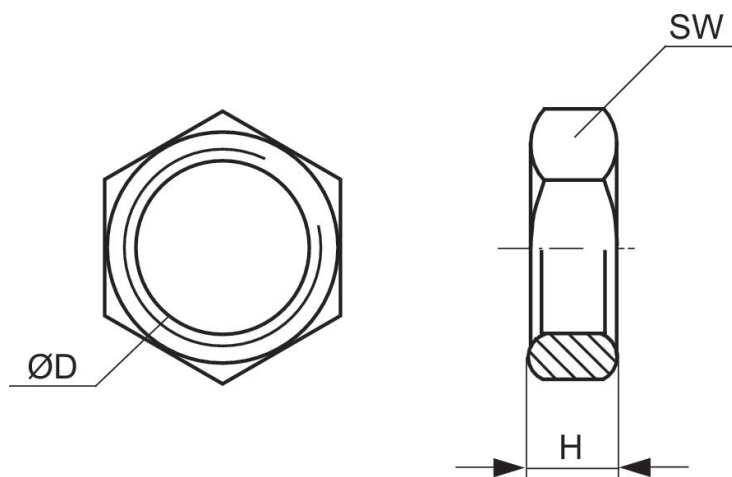
Part No.	Ø D1	Ø D2	L1
1823317003	M12x1	15	35
1823317002	M20x1,5	24	40

Hexagonal nut for panel installation



Thread connection	Delivery unit [piece]	Part No.
M20x1,5	10	1823300009
M32x1,5	5	1823300010

Dimensions







Part No.	Ø D	H	SW
1823300009	M20x1,5	6	24
1823300010	M32x1,5	9	46

Efficient pneumatic solutions, our program:
cylinders and drives, valves and valve systems,
air supply management, proportional pressure
control valves



Visit us: www.Emerson.com/aventics
Your local contact: Emerson.com/contactus

-  Emerson.com
-  Facebook.com/EmersonAutomationSolutions
-  LinkedIn.com/company/Emerson-Automation-Solutions
-  Twitter.com/EMR_Automation



The Emerson logo is a trademark and service mark of Emerson Electric Co. AVENTICS is a registered trademark of one of the Emerson family of companies. All other trademarks are the property of their respective owners. © 2020 Emerson Electric Co. All rights reserved.



CONSIDER IT SOLVED[®]