

## 系列 CC01



## 系列 CC01

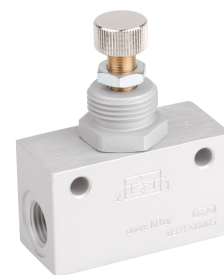
安沃驰 CC 系列止回阀设计用于 32 至 5600 l/min 标称流量。提供不同型号以及快插接头或内螺纹。

- $Q_n = 32 \text{ l/min} \dots 5600 \text{ l/min}$



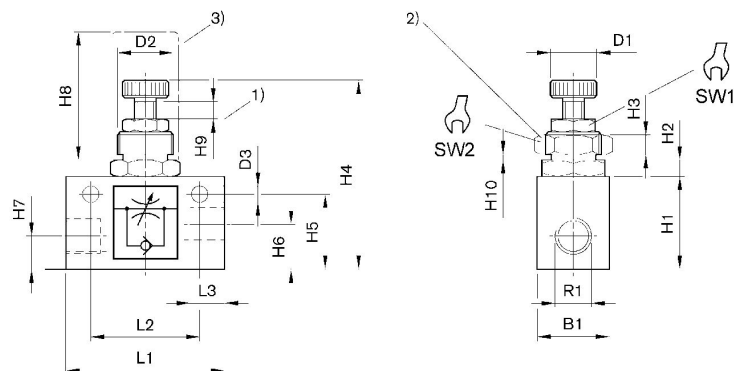
单向节流阀, 系列 CC01

内螺纹  
内螺纹



输入	输出	类型 压缩空气 接口 入口	Qn 1 > 2 [l/min]	物料号
G 1/8	G 1/8	内螺纹	32	0821200009
G 1/8	G 1/8	内螺纹	130	0821200008
G 1/4	G 1/4	内螺纹	550	0821200005

规格



1) 调整区域 2) 配电盘安装的螺母 3) 防护罩

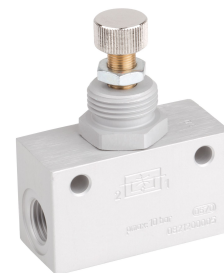
物料号	接口 G	R1	B1	D1	D2	D3	H1	H2	H3	H4
0821200009	G 1/8	G 1/8	16	10	M12x1	4.5	20	4	4	56
0821200008	G 1/8	G 1/8	16	10	M12x1	4.5	20	4	4	56
0821200005	G 1/4	G 1/4	25	13	M20x1,5	5.5	32	5.5	6	70

物料号	H5	H6	H7	H8	H9	H10	L1	L2	L3	SW1
0821200009	16.5	8	8	35	4	3.5	35	25	8	10
0821200008	16.5	8	8	35	4	3.5	35	25	8	10
0821200005	26	15	11	40	5	3.5	55	38	12	13

物料号	SW2
0821200009	17
0821200008	17
0821200005	24

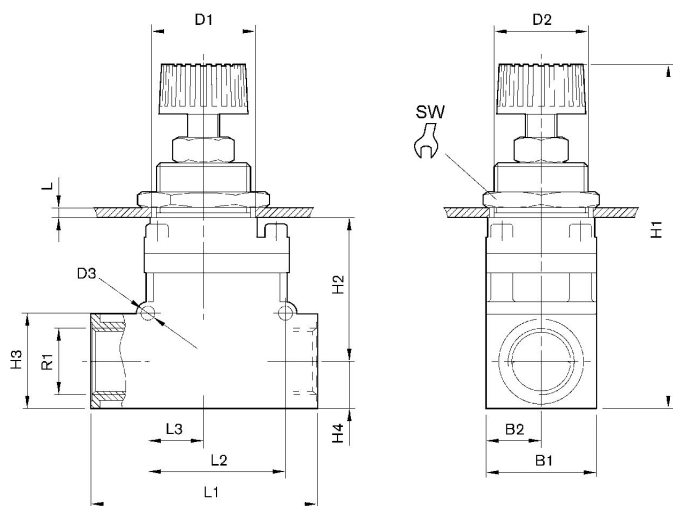
系列 CC01

内螺纹  
内螺纹



输入	输出	类型 压缩空气 接口 人口	$Q_n 1 > 2$ [l/min]	物料号
G 3/8	G 3/8	内螺纹	1600	0821200014

规格



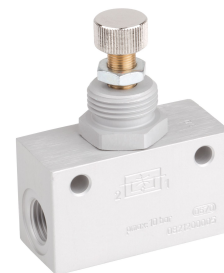
物料号	接口 G	R1	B1	B2	D1	D2	D3	H1	H2	H3
0821200014	G 3/8	G 3/8	35	17.5	30.5	30	4.5	102-109	46	30

物料号	H4	L 1)	L1	L2	L3	SW
0821200014	15	12	72	44	18	36

1) 最大值.

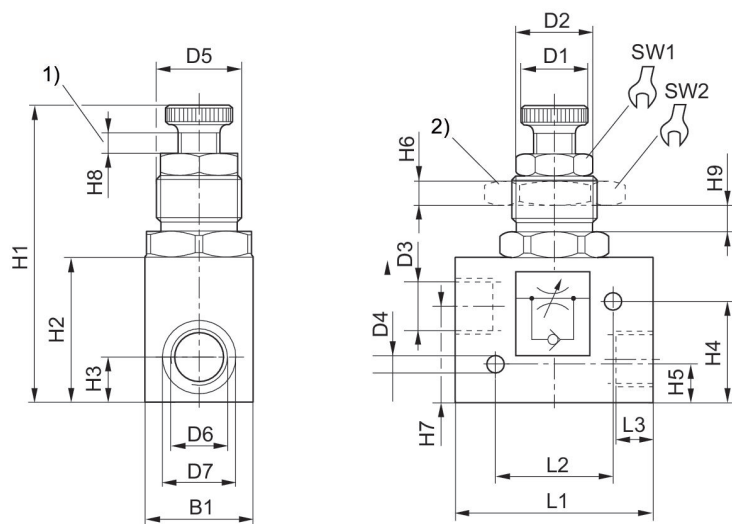
系列 CC01

内螺纹  
内螺纹



输入	输出	类型 压缩空气 接口 人口	Qn 1 > 2 [l/min]	物料号
G 1/2	G 1/2	内螺纹	2750	0821200003

规格



1) 调整区域 2) 配电盘安装的螺母

物料号	接口 G	R1	B1	D1	D2	D3	H1	H2	H3	H4
0821200003	G 1/2	G 1/2	40	27	25	27.5	120	50	17	40.5

物料号	H5	H6	H7	H8	H9	H10 1)	L1	L2	L3	R2
0821200003	15.5	9	38	6.5	8	9	75.3	45	14	M32x1,5

物料号	SW1	SW2	重量 kg
0821200003	24	46	

1) 最大值.

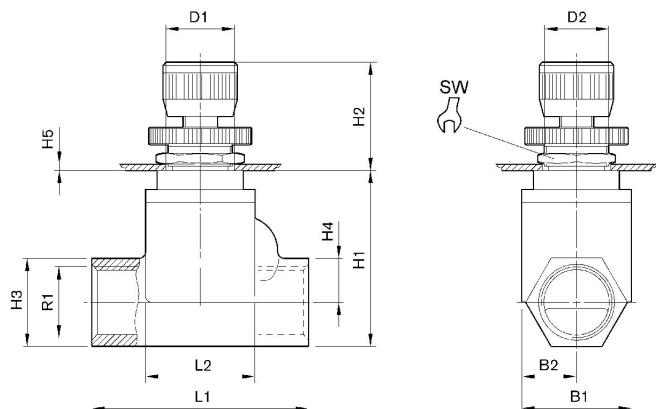
系列 CC01

内螺纹  
内螺纹



输入	输出	类型 压缩空气 接口 人口	Qn 1 > 2 [l/min]	物料号
G 3/4	G 3/4	内螺纹	5400	0821200015
G 1	G 1	内螺纹	5600	0821200016

规格



物料号	接口 G	R1	B1	B2	D1	D2	H1	H2	H3	H4
0821200015	G 3/4	G 3/4	50	25	30.5	30	82	47-57,5	41	20.5
0821200016	G 1	G 1	50	25	30.5	30	82	47-57,5	41	20.5

物料号	H5 1)	L1	L2	SW
0821200015	6	100	51	36
0821200016	6	100	51	36

1) 最大值.

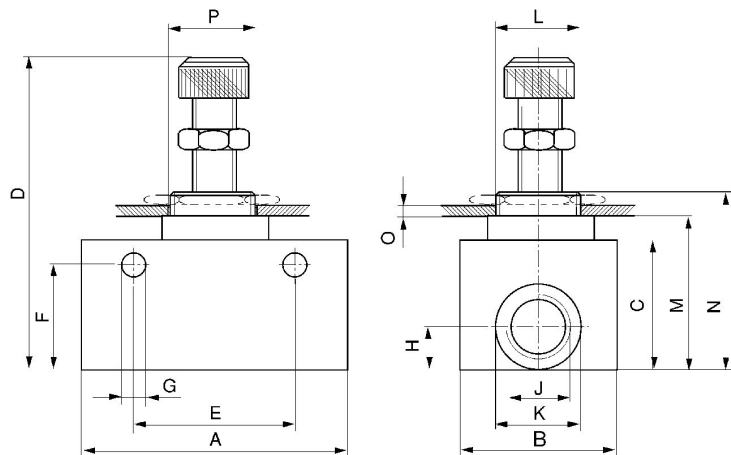
系列 CC01

内螺纹  
内螺纹



输入	输出	类型 压缩空气 接口 入口	Qn 1 > 2 [l/min]	物料号
M5	M5	内螺纹	130	5341120000
G 1/8	G 1/8	内螺纹	100	5341121100
G 1/4	G 1/4	内螺纹	500	5341122100
G 3/8	G 3/8	内螺纹	1300	5341123100
G 1/2	G 1/2	内螺纹	1650	5341124100

规格



物料号	接口 G	J	A	B	C	D	E	F	Ø G	H
5341120000	M5	M5	26	14	16	40-45	18	12.5	4.4	6
5341121100	G 1/8	G 1/8	32	16	22	44-56	24	18	4.3	10
5341122100	G 1/4	G 1/4	55	25	32	66-74	35	25	6.4	12
5341123100	G 3/8	G 3/8	58	30	40	78-93	44	33	6.6	14
5341124100	G 1/2	G 1/2	68	30	40	77-92	50	33	6.4	14

物料号	Ø K	L	M	N	O	Ø P
5341120000	8.7	M10x1	20	26	2	10.5
5341121100	14.4	M12x1	26	33.6	2	12.5
5341122100	19.5	M20x1,5	37.8	47.9	3	20.5
5341123100	23	M24x1,5	47	57	3	25

物料号	Ø K	L	M	N	O	Ø P
5341124100	27.5	M24x1,5	47	57	3	25

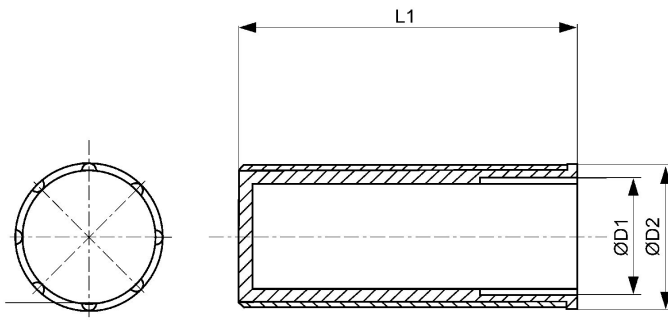


防护盖



供货数量 [件]	物料号
10	1823317003
10	1823317002

规格



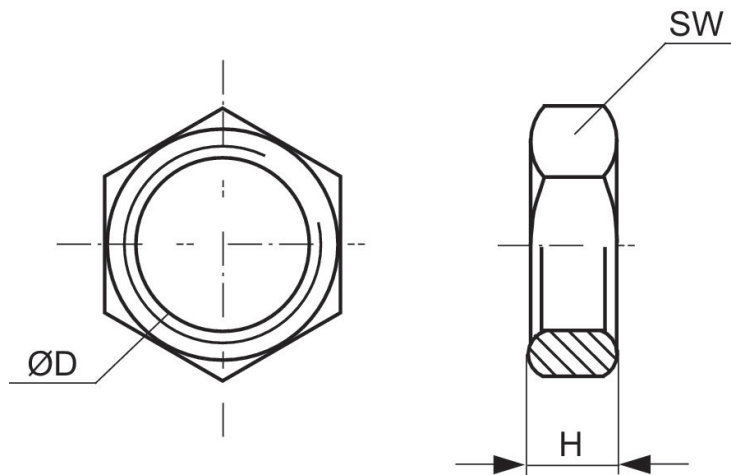
物料号	Ø D1	Ø D2	L1
1823317003	M12x1	15	35
1823317002	M20x1,5	24	40

用于控制面板安装的六角头螺母



供货数量 [件]	物料号
10	1823300009
5	1823300010

规格



物料号	Ø D	H	SW
1823300028	M12x1	4	17
1823300009	M20x1,5	6	24
1823300010	M32x1,5	9	46

# Efficient pneumatic solutions, our program: cylinders and drives, valves and valve systems, air supply management



Visit us: [Emerson.com/Aventics](https://www.emerson.com/Aventics)

Your local contact: [Emerson.com/contactus](https://www.emerson.com/contactus)



[Emerson.com](https://www.emerson.com)



[Facebook.com/EmersonAutomationSolutions](https://www.facebook.com/EmersonAutomationSolutions)



[LinkedIn.com/company/Emerson-Automation-Solutions](https://www.linkedin.com/company/Emerson-Automation-Solutions)



[Twitter.com/EMR\\_Automation](https://twitter.com/EMR_Automation)

An example configuration is depicted on the title page. The delivered product may thus vary from that in the illustration. Subject to change. This Document, as well as the data, specifications and other information set forth in it, are the exclusive property of AVENTICS GmbH. It may not be reproduced or given to third parties without its consent. Only use the AVENTICS products shown in industrial applications. Read the product documentation completely and carefully before using the product. Observe the applicable regulations and laws of the respective country. When integrating the product into applications, note the system manufacturer's specifications for safe use of the product. The data specified only serve to describe the product. No statements concerning a certain condition or suitability for a certain application can be derived from our information. The information given does not release the user from the obligation of own judgment and verification. It must be remembered that the products are subject to a natural process of wear and aging.

The Emerson logo is a trademark and service mark of Emerson Electric Co. Brand logotype are registered trademarks of one of the Emerson family of companies. All other marks are the property of their respective owners. © 2019 Emerson Electric Co. All rights reserved.



**CONSIDER IT SOLVED™**