

Series CC01



AVENTICS™

AVENTICS Series CC01 Check-choke valves


EMERSON™

Series CC01

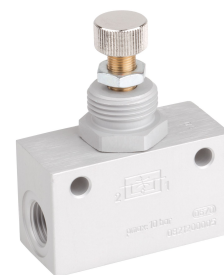
The AVENTICS Series CC check-choke valves are designed for nominal flows from 32 to 5,600 l/min. The different versions are available with a push-in fitting or internal thread.

- $Q_n = 32 \text{ l/min} \dots 5600 \text{ l/min}$



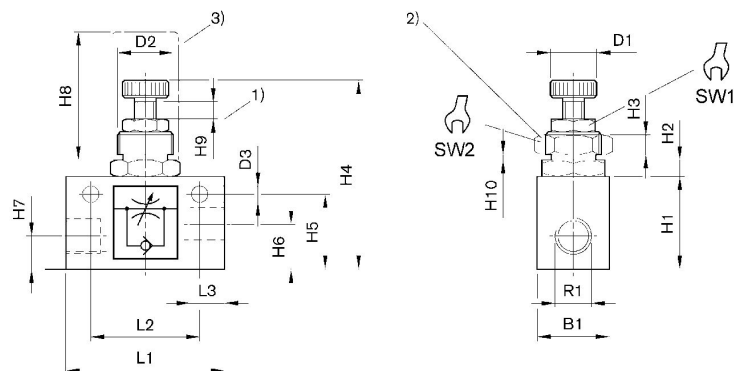
Check-choke valve, Series CC01

Internal thread
Internal thread



Input	Output	Compressed air connection type input	Qn 1 > 2 [l/min]	Part No.
G 1/8	G 1/8	Internal thread	32	0821200009
G 1/8	G 1/8	Internal thread	130	0821200008
G 1/4	G 1/4	Internal thread	550	0821200005

Dimensions



1) throttle setting range 2) nut for control panel installation 3) protective cap

Part No.	Port G	R1	B1	D1	D2	D3	H1	H2	H3	H4
0821200009	G 1/8	G 1/8	16	10	M12x1	4.5	20	4	4	56
0821200008	G 1/8	G 1/8	16	10	M12x1	4.5	20	4	4	56
0821200005	G 1/4	G 1/4	25	13	M20x1,5	5.5	32	5.5	6	70

Part No.	H5	H6	H7	H8	H9	H10	L1	L2	L3	SW1
0821200009	16.5	8	8	35	4	3.5	35	25	8	10
0821200008	16.5	8	8	35	4	3.5	35	25	8	10
0821200005	26	15	11	40	5	3.5	55	38	12	13

Part No.	SW2
0821200009	17
0821200008	17
0821200005	24

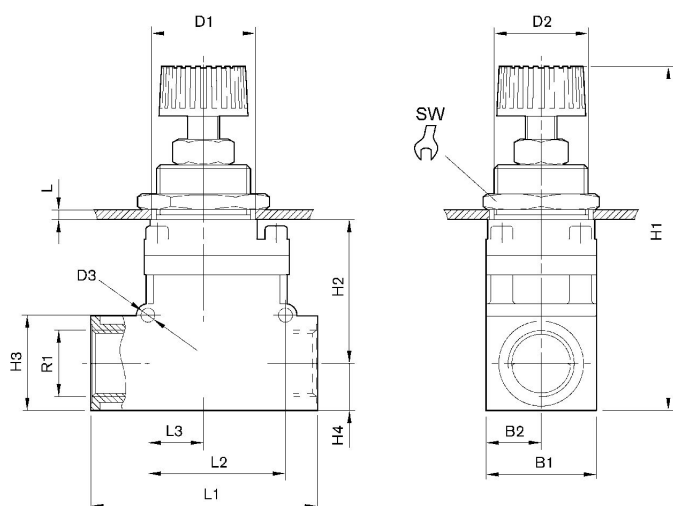
Series CC01

Internal thread
Internal thread



Input	Output	Compressed air connection type input	Qn 1 > 2 [l/min]	Part No.
G 3/8	G 3/8	Internal thread	1600	0821200014

Dimensions



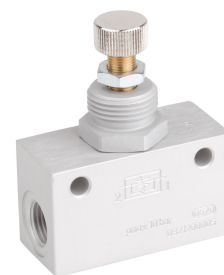
Part No.	Port G	R1	B1	B2	D1	D2	D3	H1	H2	H3
0821200014	G 3/8	G 3/8	35	17.5	30.5	30	4.5	102-109	46	30

Part No.	H4	L 1)	L1	L2	L3	SW
0821200014	15	12	72	44	18	36

1) Max.

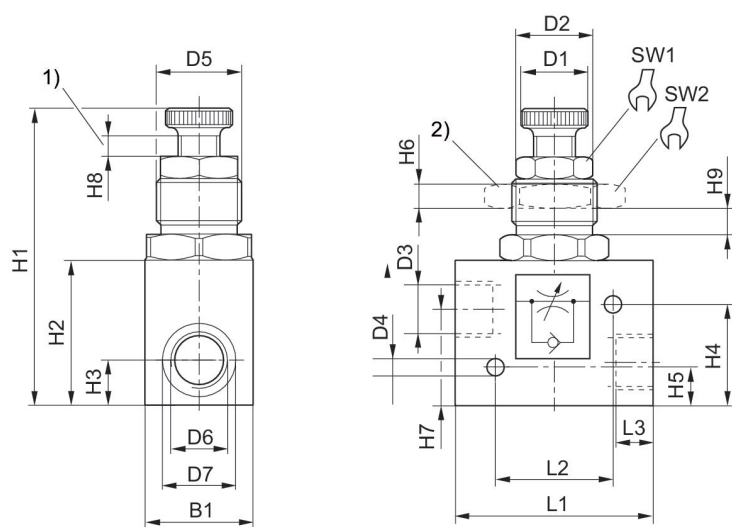
Series CC01

Internal thread
Internal thread



Input	Output	Compressed air connection type input	Qn 1 > 2 [l/min]	Part No.
G 1/2	G 1/2	Internal thread	2750	0821200003

Dimensions



1) throttle setting range 2) nut for control panel installation

Part No.	Port G	R1	B1	D1	D2	D3	H1	H2	H3	H4
0821200003	G 1/2	G 1/2	40	27	25	27.5	120	50	17	40.5

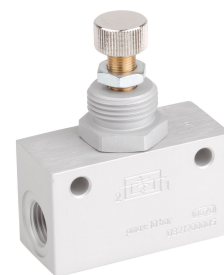
Part No.	H5	H6	H7	H8	H9	H10 1)	L1	L2	L3	R2
0821200003	15.5	9	38	6.5	8	9	75.3	45	14	M32x1,5

Part No.	SW1	SW2	Weight kg
0821200003	24	46	

1) Max.

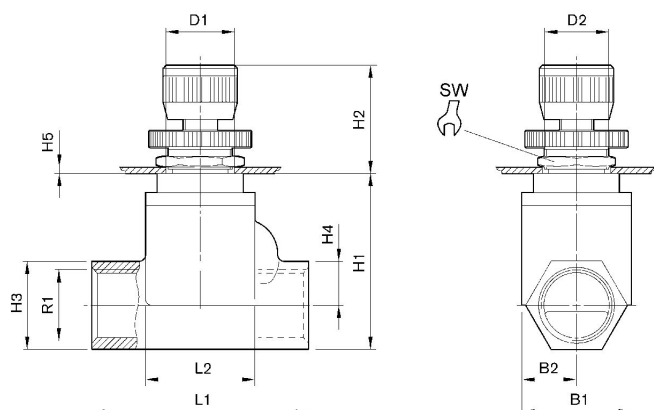
Series CC01

Internal thread
Internal thread



Input	Output	Compressed air connection type input	Qn 1 > 2 [l/min]	Part No.
G 3/4	G 3/4	Internal thread	5400	0821200015
G 1	G 1	Internal thread	5600	0821200016

Dimensions



Part No.	Port G	R1	B1	B2	D1	D2	H1	H2	H3	H4
0821200015	G 3/4	G 3/4	50	25	30.5	30	82	47-57,5	41	20.5
0821200016	G 1	G 1	50	25	30.5	30	82	47-57,5	41	20.5

Part No.	H5 1)	L1	L2	SW
0821200015	6	100	51	36
0821200016	6	100	51	36

1) Max.

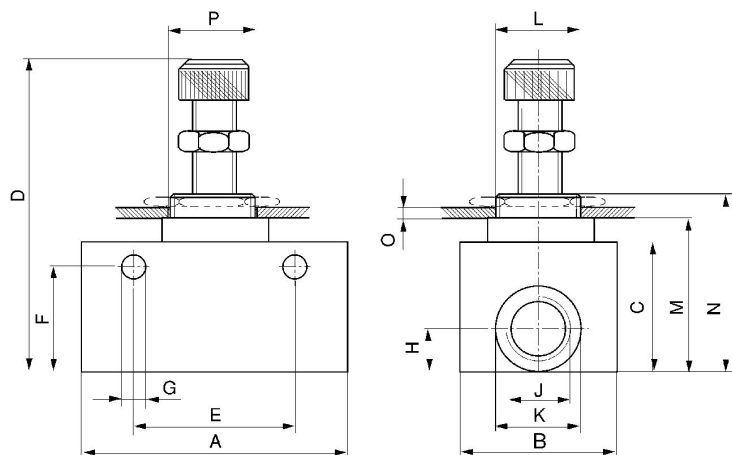
Series CC01

Internal thread
Internal thread



Input	Output	Compressed air connection type input	Qn 1 > 2 [l/min]	Part No.
M5	M5	Internal thread	130	5341120000
G 1/8	G 1/8	Internal thread	100	5341121100
G 1/4	G 1/4	Internal thread	500	5341122100
G 3/8	G 3/8	Internal thread	1300	5341123100
G 1/2	G 1/2	Internal thread	1650	5341124100

Dimensions



Part No.	Port G	J	A	B	C	D	E	F	Ø G	H
5341120000	M5	M5	26	14	16	40–45	18	12.5	4.4	6
5341121100	G 1/8	G 1/8	32	16	22	44–56	24	18	4.3	10
5341122100	G 1/4	G 1/4	55	25	32	66–74	35	25	6.4	12
5341123100	G 3/8	G 3/8	58	30	40	78–93	44	33	6.6	14
5341124100	G 1/2	G 1/2	68	30	40	77–92	50	33	6.4	14

Part No.	Ø K	L	M	N	O	Ø P
5341120000	8.7	M10x1	20	26	2	10.5
5341121100	14.4	M12x1	26	33.6	2	12.5
5341122100	19.5	M20x1,5	37.8	47.9	3	20.5
5341123100	23	M24x1,5	47	57	3	25

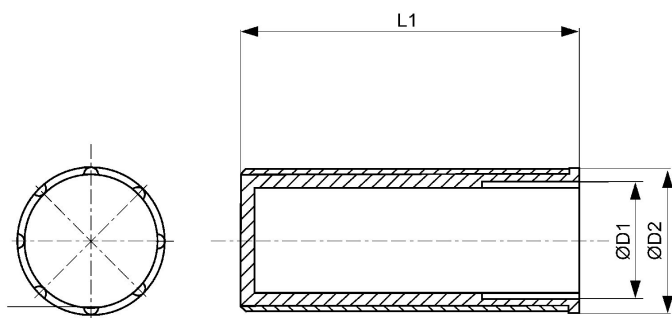
Part No.	Ø K	L	M	N	O	Ø P
5341124100	27.5	M24x1,5	47	57	3	25

Protective cap



Delivery unit [piece]	Part No.
10	1823317003
10	1823317002

Dimensions



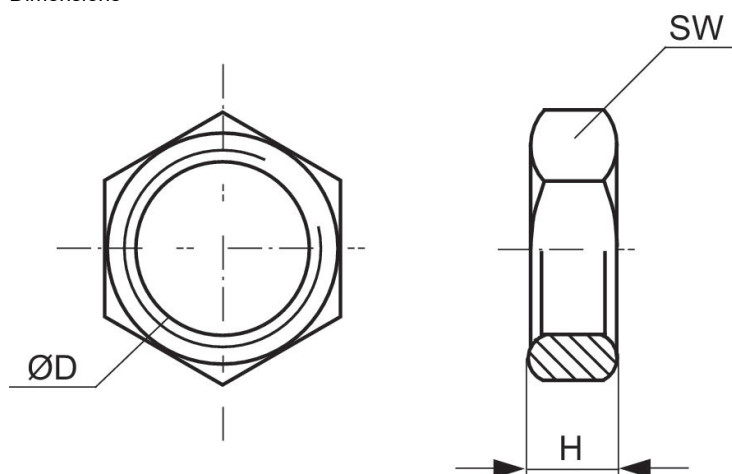
Part No.	Ø D1	Ø D2	L1
1823317003	M12x1	15	35
1823317002	M20x1,5	24	40

Hexagonal nut for panel installation



Delivery unit [piece]	Part No.
10	1823300009
5	1823300010

Dimensions



Part No.	Ø D	H	SW
1823300028	M12x1	4	17
1823300009	M20x1,5	6	24
1823300010	M32x1,5	9	46

Efficient pneumatic solutions, our program: cylinders and drives, valves and valve systems, air supply management



Visit us: [Emerson.com/Aventics](https://www.emerson.com/aventics)

Your local contact: [Emerson.com/contactus](https://www.emerson.com/contactus)



[Emerson.com](https://www.emerson.com)



[Facebook.com/EmersonAutomationSolutions](https://www.facebook.com/EmersonAutomationSolutions)



[LinkedIn.com/company/Emerson-Automation-Solutions](https://www.linkedin.com/company/Emerson-Automation-Solutions)



[Twitter.com/EMR_Automation](https://twitter.com/EMR_Automation)

An example configuration is depicted on the title page. The delivered product may thus vary from that in the illustration. Subject to change. This Document, as well as the data, specifications and other information set forth in it, are the exclusive property of AVENTICS GmbH. It may not be reproduced or given to third parties without its consent. Only use the AVENTICS products shown in industrial applications. Read the product documentation completely and carefully before using the product. Observe the applicable regulations and laws of the respective country. When integrating the product into applications, note the system manufacturer's specifications for safe use of the product. The data specified only serve to describe the product. No statements concerning a certain condition or suitability for a certain application can be derived from our information. The information given does not release the user from the obligation of own judgment and verification. It must be remembered that the products are subject to a natural process of wear and aging.

The Emerson logo is a trademark and service mark of Emerson Electric Co. Brand logotype are registered trademarks of one of the Emerson family of companies. All other marks are the property of their respective owners. © 2019 Emerson Electric Co. All rights reserved.



CONSIDER IT SOLVED™