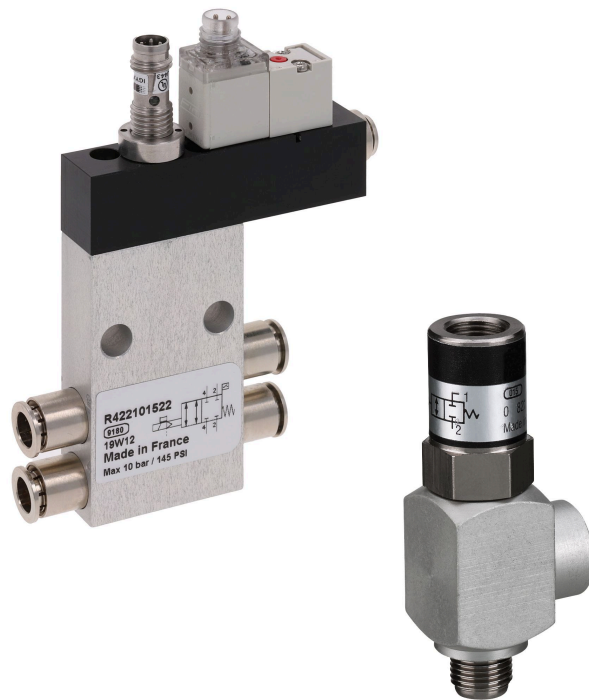
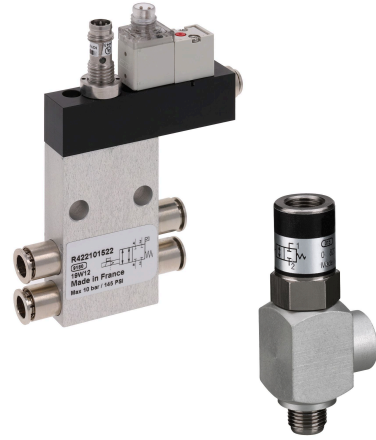


# Shut-off valves



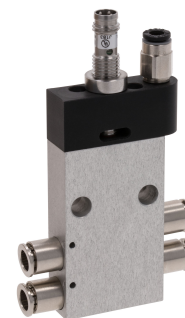
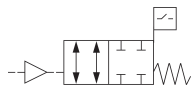
Shut-off valves

- Qn = 340 l/min ... 680 l/min



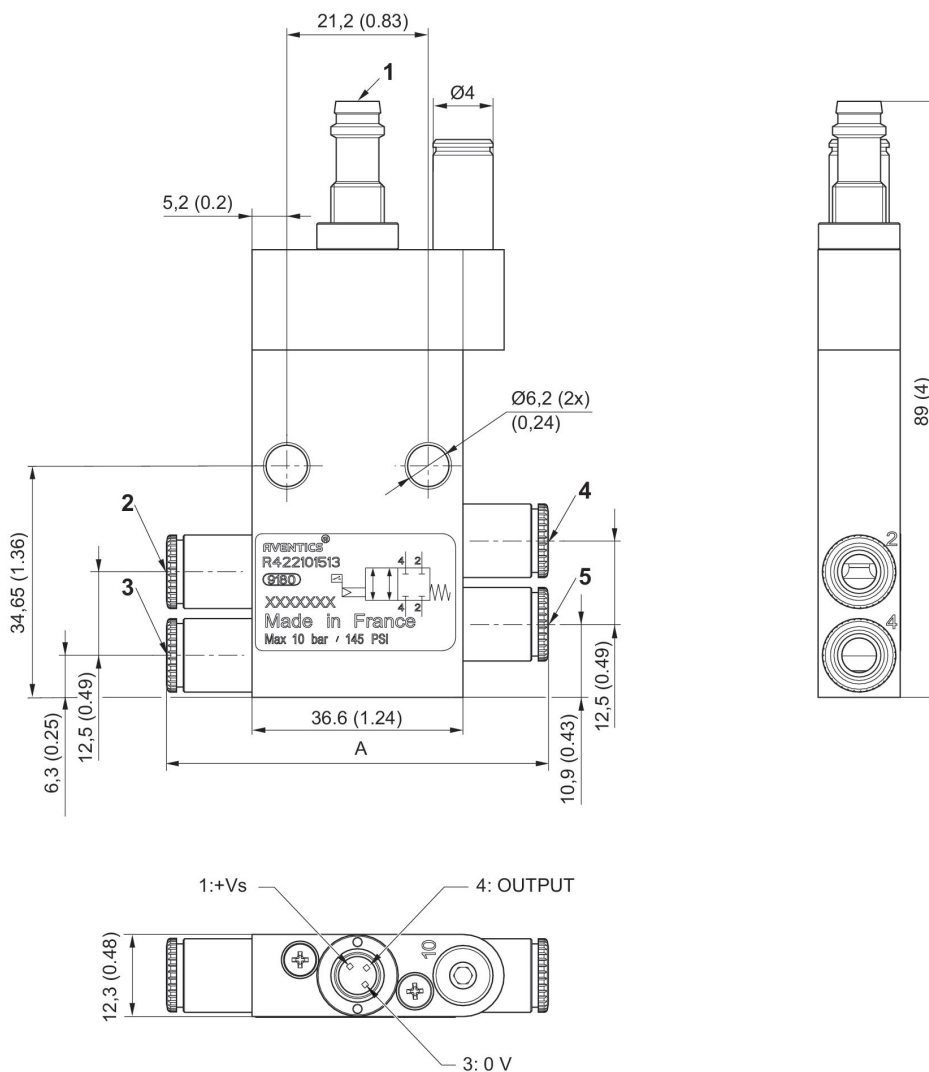
Shut-off module, stand-alone

Pneumatically



Compressed air connection input		Compressed air connection output	Part No.
	Ø 6	Ø 6	R422101515
	Ø 8	Ø 8	R422101514
	Ø 1/4"	Ø 1/4"	R422101513

Dimensions

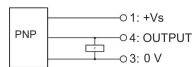


- 1) Sensor plug M8, 3-pin  
The orientation of the pins depends on the angular position of the sensor, which is random.
- Operating line 2
- Operating line 4
- Fittings

Part No.	A
R422101513	57±1
R422101514	58±1
R422101515	50±1

**R422101515, R422101514, R422101513**

Sensor circuit diagram



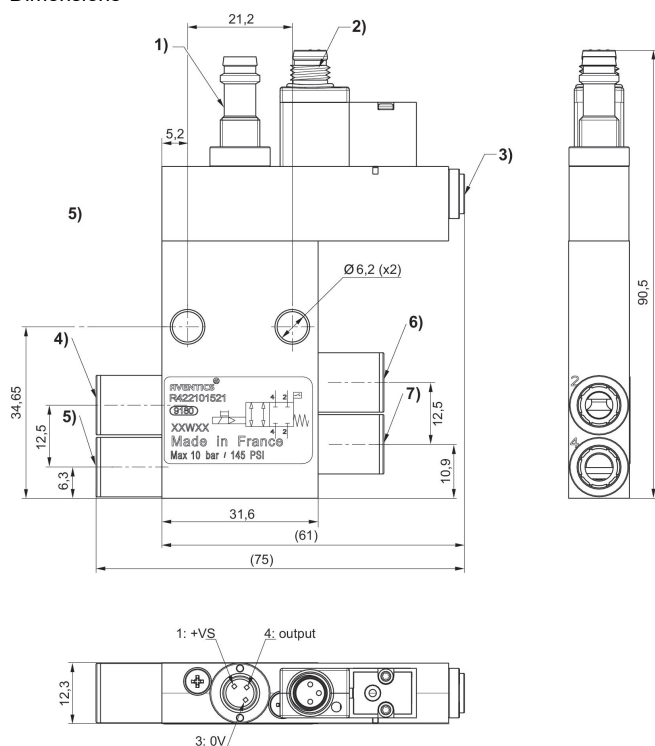
### Shut-off module, stand-alone

Electrically



Compressed air connection input		Compressed air connection output		Part No.
	Ø 6		Ø 6	R422101522
	Ø 8		Ø 8	R422101521
	Ø 4		Ø 4	R422101523
	Ø 1/4"		Ø 1/4"	R422101524

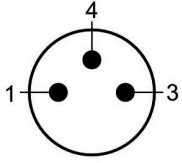
#### Dimensions



- 1) Sensor plug M8, 3-pin electronic PNP  
The orientation of the pins depends on the angular position of the sensor, which is random.
- 4) Fittings
- 5) Pilot air supply
- 4) Connection 2, Input-side 5) Connection 4, Input-side 6) Operating line 2 7) Operating line 4

**R422101522, R422101521, R422101523, R422101524**

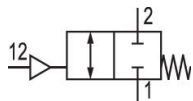
Pilot valve pin assignment M8x1 (3-pin)



(1) BN=brown (3) BU=blue (4) BK=black

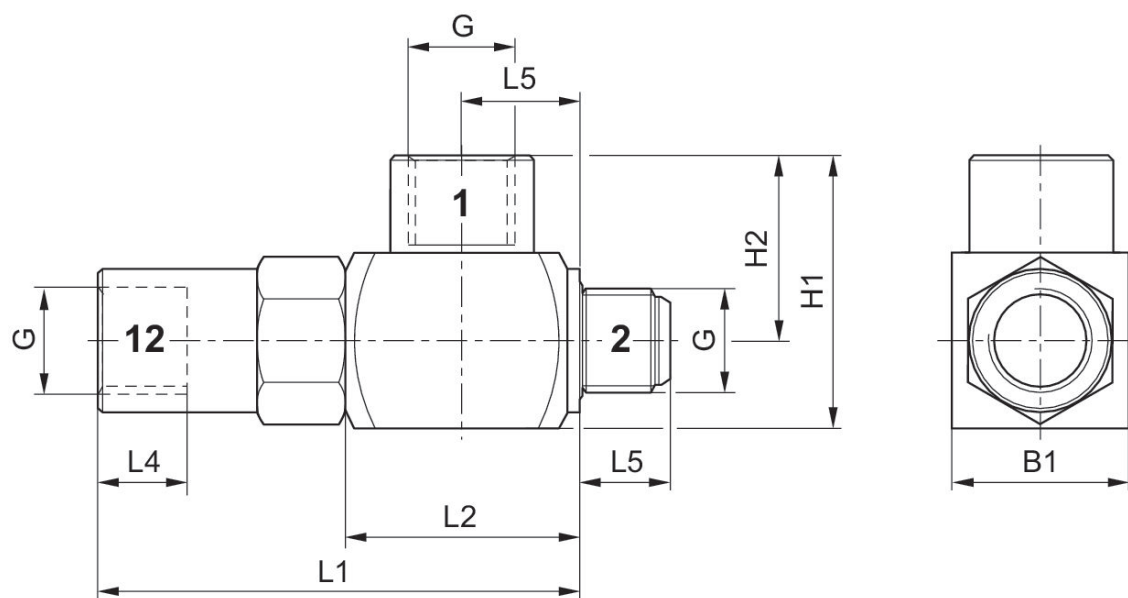
### Stop valve

Internal thread  
External thread



Compressed air connection input	Compressed air connection type input	Output	Qn 2 > 1 [l/min]	Part No.
G 1/8	External thread	G 1/8	340	0821003075
G 1/4	External thread	G 1/4	680	0821003076

#### Dimensions

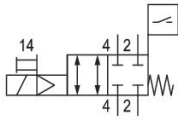


Part No.	Port G	L1	L2	L3	L4	L5	H1	H2	B1	SW
0821003075	G 1/8	50.5	25.4	12.7	8	7.5	24.5	16	17	15
0821003076	G 1/4	59.6	29	14.5	12	11.4	34	23	22	18



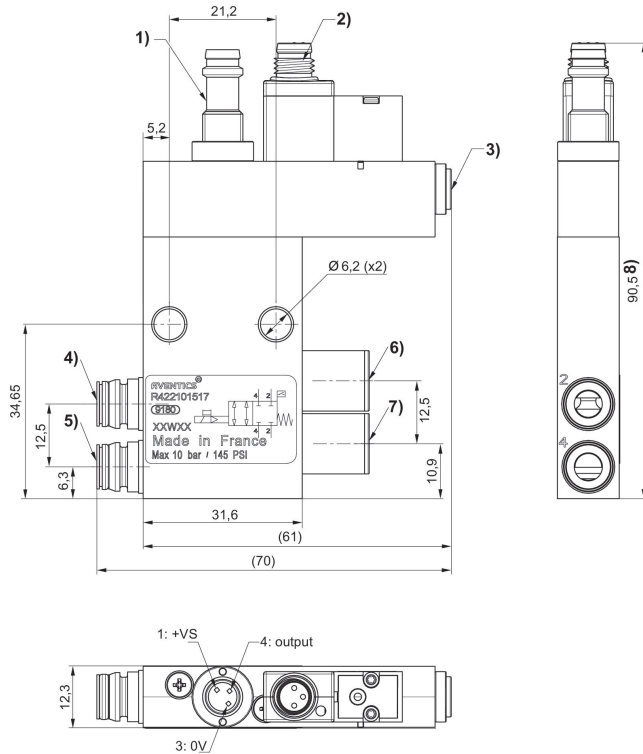
## Shut-off module, Series AV

Electrically



Compressed air connection output	Part No.
Ø 6	R422101518
Ø 8	R422101517
Ø 1/4"	R422101520

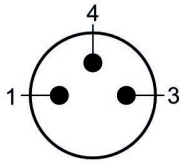
### Dimensions



- 1) Sensor plug M8, 3-pin electronic PNP  
The orientation of the pins depends on the angular position of the sensor, which is random.
- 2) Pilot valve connection
- 3) Pilot air supply
- 4) Connection 2, valve side 5) Connection 4, valve side 6) Operating line 2 7) Operating line 4  
Pneumatic connection to base plate valves, suitable for all sizes in the AV03 and AV05 series

**R422101518, R422101517, R422101520**

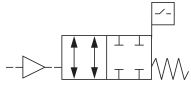
Pilot valve pin assignment M8x1 (3-pin)



(1) BN=brown (3) BU=blue (4) BK=black

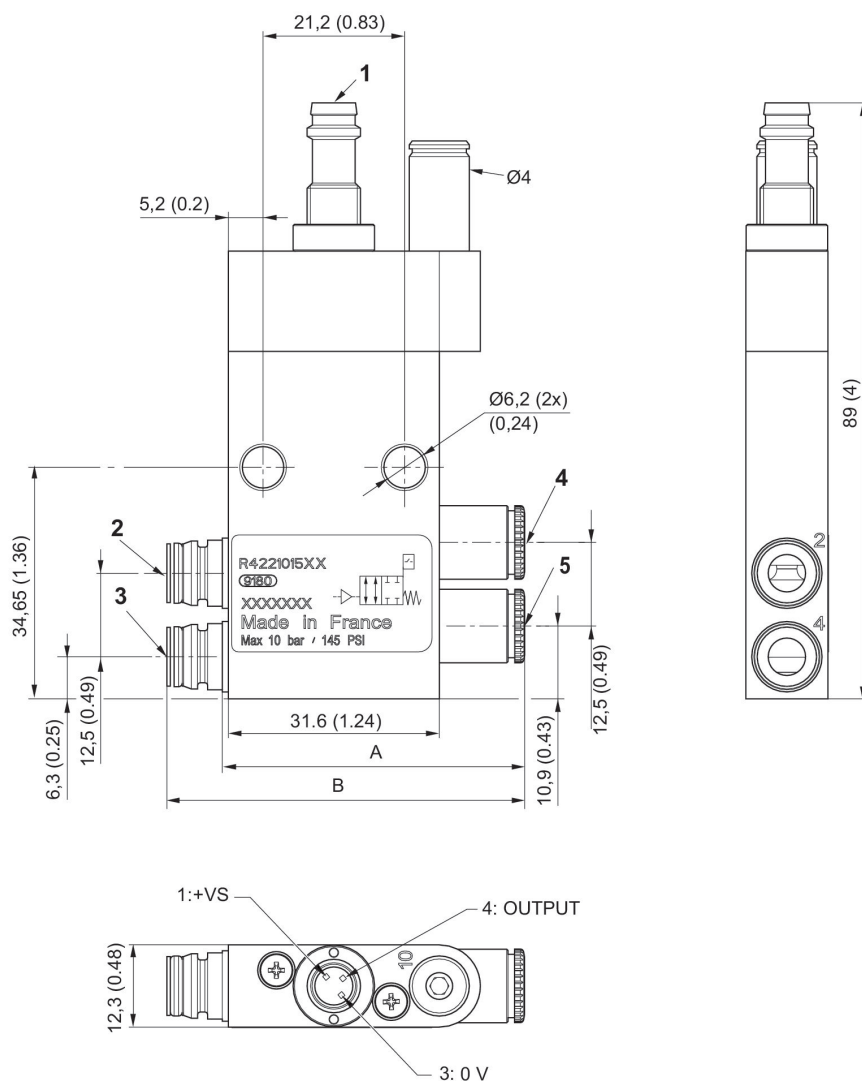
## Shut-off module, Series AV

Pneumatically  
Internal thread



Compressed air connection output	Part No.	
Ø 6	R422101511	
Ø 8	R422101510	
Ø 1/4"	R422101509	

Dimensions

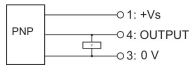


- 1) Sensor plug M8, 3-pin electronic PNP  
The orientation of the pins depends on the angular position of the sensor, which is random.
- 2) Connection 2, valve side
- 3) Connection 4, valve side
- 4) Operating line 2
- 5) Operating line 4

Part No.	A	B
R422101509	45±1	53±1
R422101510	45±1	54±1
R422101511	42±1	50±1
R499101512	38±1	46±1
tablefooter		

**R422101511, R422101510, R422101509**

Sensor circuit diagram



# Efficient pneumatic solutions, our program: cylinders and drives, valves and valve systems, air supply management



Visit us: [Emerson.com/Aventics](https://www.emerson.com/Aventics)

Your local contact: [Emerson.com/contactus](https://www.emerson.com/contactus)



[Emerson.com](https://www.emerson.com)



[Facebook.com/EmersonAutomationSolutions](https://www.facebook.com/EmersonAutomationSolutions)



[LinkedIn.com/company/Emerson-Automation-Solutions](https://www.linkedin.com/company/Emerson-Automation-Solutions)



[Twitter.com/EMR\\_Automation](https://twitter.com/EMR_Automation)

An example configuration is depicted on the title page. The delivered product may thus vary from that in the illustration. Subject to change. This Document, as well as the data, specifications and other information set forth in it, are the exclusive property of AVENTICS GmbH. It may not be reproduced or given to third parties without its consent. Only use the AVENTICS products shown in industrial applications. Read the product documentation completely and carefully before using the product. Observe the applicable regulations and laws of the respective country. When integrating the product into applications, note the system manufacturer's specifications for safe use of the product. The data specified only serve to describe the product. No statements concerning a certain condition or suitability for a certain application can be derived from our information. The information given does not release the user from the obligation of own judgment and verification. It must be remembered that the products are subject to a natural process of wear and aging.

The Emerson logo is a trademark and service mark of Emerson Electric Co. Brand logotype are registered trademarks of one of the Emerson family of companies. All other marks are the property of their respective owners. © 2019 Emerson Electric Co. All rights reserved.



**CONSIDER IT SOLVED™**