

QR1



AVENTICS™

AVENTICS QR1 系列单向止回阀



系列 QR1

安沃驰 QR1 系列单向止回阀设计用于安全相关的过程，它通过自动阻隔气源即时中断工作冲程。

- $Q_n = 280 \text{ l/min} \dots 2000 \text{ l/min}$
- Na základě optimalizace produktu se může dodaný artikl akutálně odlišovat od zobrazených rozměrů.



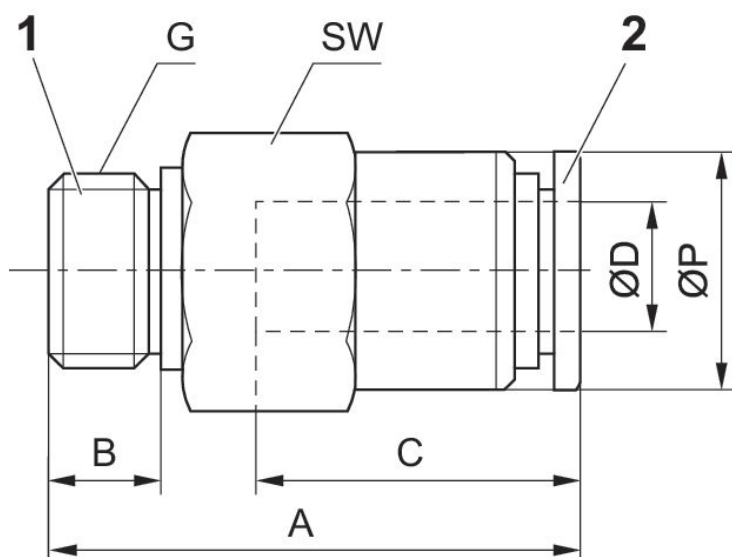
止回阀, 系列 QR1-AAN

外螺纹
快插接头



压缩空气接口 1	压缩空气接口 2	额定流量 Q_n 1 向 2 [l/min]	材料 : 外壳	物料号
G 1/8	Ø 4	300	黄铜	R412005526
G 1/8	Ø 6	700	黄铜	R412005527
G 1/4	Ø 6	700	黄铜	R412005528
G 1/4	Ø 8	900	黄铜	R412005529

规格



物料号	G	Ø D	A	B	C	SW	Ø P
R412005526	G 1/8	Ø 4	26.6	5	16	14	10
R412005527	G 1/4	Ø 6	26.9	5	17	14	12
R412005528	G 1/8	Ø 6	29.4	6	17	17	13
R412005529	G 1/8	Ø 8	33.8	6	18.5	17	14

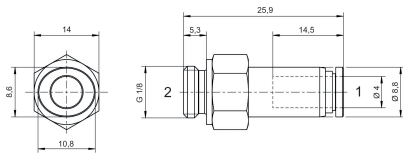
单向阀, 系列 QR1-ANR

外螺纹
快插接头

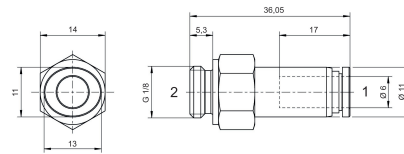


压缩空气接口 1	压缩空气接口 2	额定流量 Q_n 1 向 2 [l/min]	材料 : 外壳	物料号
Ø 4	G 1/8	280	黄铜	R412005565
Ø 6	G 1/8	600	黄铜	R412005566
Ø 6	G 1/4	600	黄铜	R412005568
Ø 8	G 1/4	900	黄铜	R412005569

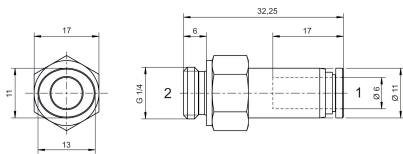
R412005565



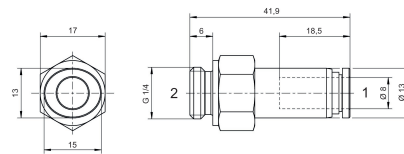
R412005566



R412005568



R412005569



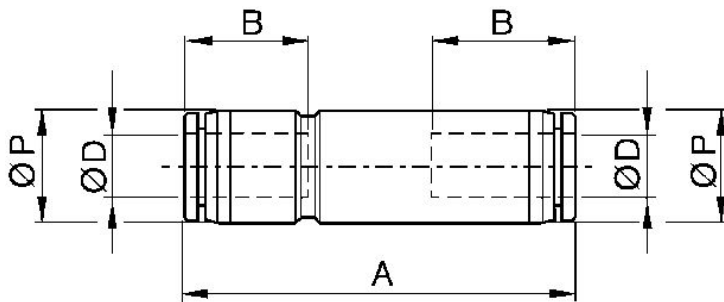
止回阀, 系列 QR1-ASK

快插接头
快插接头



压缩空气接口 1	压缩空气接口 2	额定流量 Q_n 1 向 2 [l/min]	材料 : 外壳	物料号
Ø 4	Ø 4	300	聚酯树脂	R412005547
Ø 6	Ø 6	700	聚酯树脂	R412005548
Ø 8	Ø 8	900	聚酯树脂	R412005549
Ø 10	Ø 10	1500	铝材	R412005550

规格



物料号	Ø D	Ø D	A	B	Ø P
R412005547	Ø 4	Ø 4	42.9	16	10
R412005548	Ø 6	Ø 6	46.9	17	12.4
R412005549	Ø 8	Ø 8	52.6	18.5	14.4
R412005550	Ø 10	Ø 10	59.2	21	17.6
R412005551	Ø 12	Ø 12	71.8	22	21.2

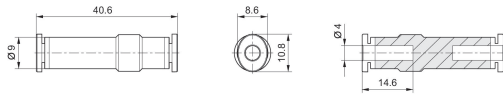
单向阀, 系列 QR1-SKR

快插接头
快插接头

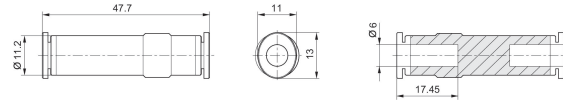


压缩空气接口 1	压缩空气接口 2	额定流量 Q_n 1 向 2 [l/min]	材料: 外壳	物料号
Ø 4	Ø 4	280	聚酰胺	R412005573
Ø 6	Ø 6	600	聚酰胺	R412005574
Ø 8	Ø 8	1800	聚酰胺	R412005575
Ø 10	Ø 10	1800	铝材	R412005576
Ø 12	Ø 12	2000	铝材	R412005577

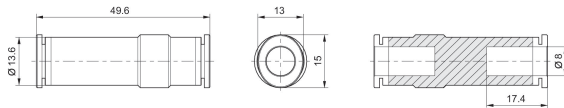
R412005573



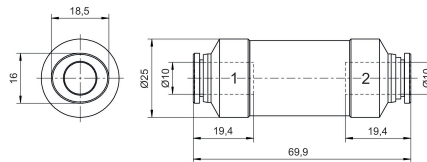
R412005574



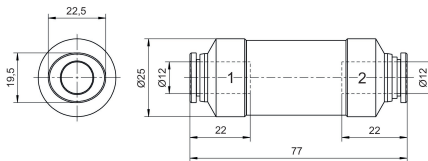
R412005575



R412005576

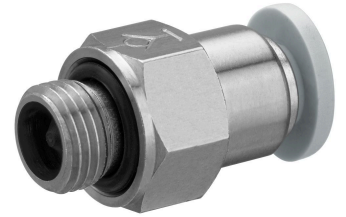


R412005577



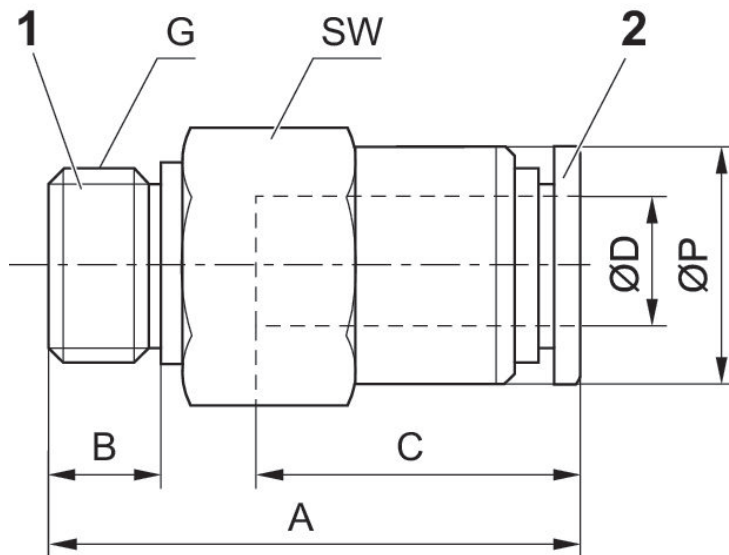
止回阀, 系列 QR1-AAN

外螺纹
快插接头



压缩空气接口 1	压缩空气接口 2	额定流量 Q_n 1 向 2 [l/min]	材料 : 外壳	物料号
1/8 NPT	Ø5/32	300	黄铜	R432000442
1/8 NPT	Ø1/4	300	黄铜	R432000436
1/4 NPT	Ø1/4	300	黄铜	R432000437
1/4 NPT	Ø5/16	300	黄铜	R432000440
3/8 NPT	Ø5/16	300	黄铜	R432000441
3/8 NPT	Ø 3/8	300	黄铜	R432000438
3/8 NPT	Ø1/2	300	黄铜	R432000434
1/2 NPT	Ø 3/8	300	黄铜	R432000439
1/2 NPT	Ø1/2	300	黄铜	R432000435

尺寸按英寸



物料号	G	Ø D	A	B	C	SW	Ø P
R432000442	1/8 NPT	Ø5/32	1.004	0.315	0.63	7/16	0.394
R432000436	1/8 NPT	Ø1/4	1.095	0.315	0.67	1/2	0.473
R432000437	1/4 NPT	Ø1/4	1.095	0.433	0.67	9/16	0.552

物料号	G	Ø D	A	B	C	SW	Ø P
R432000440	1/4 NPT	Ø5/16	1.253	0.433	0.729	9/16	0.552
R432000441	3/8 NPT	Ø5/16	1.253	0.473	0.729	11/16	0.67
R432000438	3/8 NPT	Ø 3/8	1.422	0.473	0.827	11/16	0.67
R432000434	3/8 NPT	Ø 1/2	1.749	0.473	0.887	7/8	0.796
R432000439	1/2 NPT	Ø 3/8	1.422	0.591	0.827	7/8	0.709
R432000435	1/2 NPT	Ø 1/2	1.741	0.591	0.887	7/8	0.796

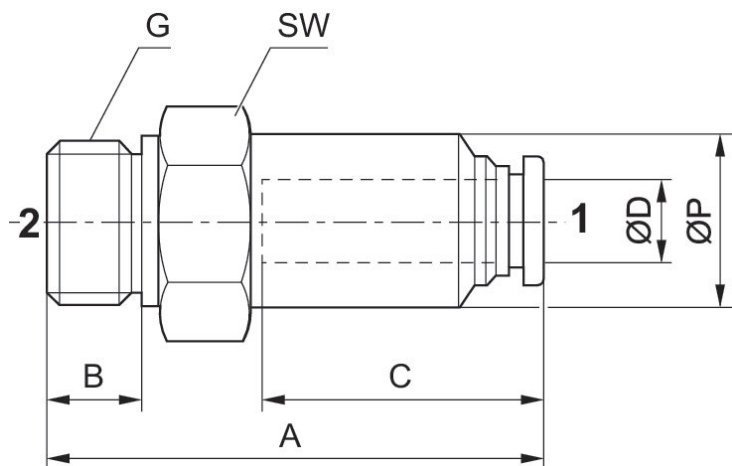
单向阀, 系列 QR1-ANR

外螺纹
快插接头



压缩空气接口 1	压缩空气接口 2	材料：外壳	物料号
Ø5/32	10-32 UNF	黄铜	R432000424
Ø5/32	1/8 NPT	黄铜	R432000423
Ø5/16	1/8 NPT	黄铜	R432000422
Ø1/4	1/8 NPT	黄铜	R432000417
Ø1/4	1/4 NPT	黄铜	R432000418
Ø1/4	1/4 NPT	黄铜	R432000421
Ø 3/8	3/8 NPT	黄铜	R432000419
Ø1/2	3/8 NPT	黄铜	R432000415
Ø 3/8	1/2 NPT	黄铜	R432000420
Ø1/2	1/2 NPT	黄铜	R432000416

尺寸按英寸



物料号	G	Ø D	A	B	C	SW	Ø P
R432000424	10-32 UNF	Ø5/32	1.182	0.217	0.63	7/16	0.394
R432000423	1/8 NPT	Ø5/32	1.221	0.315	0.63	7/16	0.394
R432000422	1/8 NPT	Ø5/16	1.127	0.315	0.729	9/16	0.406
R432000417	1/8 NPT	Ø1/4	0.973	0.315	0.67	1/2	0.473
R432000418	1/4 NPT	Ø1/4	1.127	0.433	0.67	1/2	0.511

物料号	G	Ø D	A	B	C	SW	Ø P
R432000421	1/4 NPT	Ø1/4	1.127	0.433	0.729	9/16	0.406
R432000419	3/8 NPT	Ø 3/8	2.45	0.473	0.827	11/16	0.989
R432000415	3/8 NPT	Ø1/2	2.537	0.473	0.887	7/8	0.985
R432000420	1/2 NPT	Ø 3/8	2.466	0.591	0.827	7/8	1.103
R432000416	1/2 NPT	Ø1/2	2.778	0.591	0.887	7/8	1.103

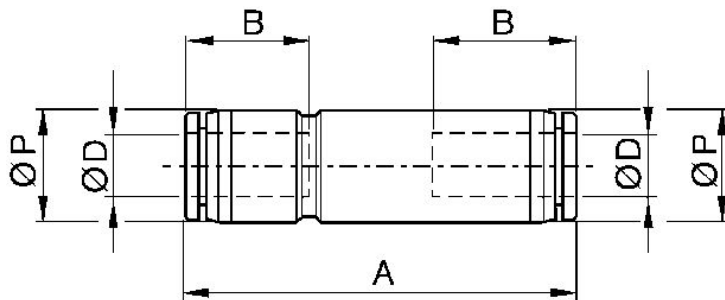
止回阀, 系列 QR1-ASK

快插接头
快插接头



压缩空气接口 1	压缩空气接口 2	额定流量 Q_n 1 向 2 [l/min]	材料 : 外壳	物料号
$\varnothing 5/32$	$\varnothing 5/32$	300	聚酯树脂	R432000461
$\varnothing 1/4$	$\varnothing 1/4$	300	聚酯树脂	R432000458
$\varnothing 5/16$	$\varnothing 5/16$	300	聚酯树脂	R432000460
$\varnothing 3/8$	$\varnothing 3/8$	300	聚酯树脂	R432000459
$\varnothing 1/2$	$\varnothing 1/2$	300	聚酯树脂	R432000457

尺寸按英寸



物料号	$\varnothing D$	$\varnothing D$	A	B	$\varnothing P$
R432000461	$\varnothing 5/32$	$\varnothing 5/32$	1.69	0.63	0.394
R432000458	$\varnothing 1/4$	$\varnothing 1/4$	1.86	0.67	0.489
R432000460	$\varnothing 5/16$	$\varnothing 5/16$	2.072	0.729	0.567
R432000459	$\varnothing 3/8$	$\varnothing 3/8$	2.38	0.827	0.693
R432000457	$\varnothing 1/2$	$\varnothing 1/2$	2.774	0.887	0.835

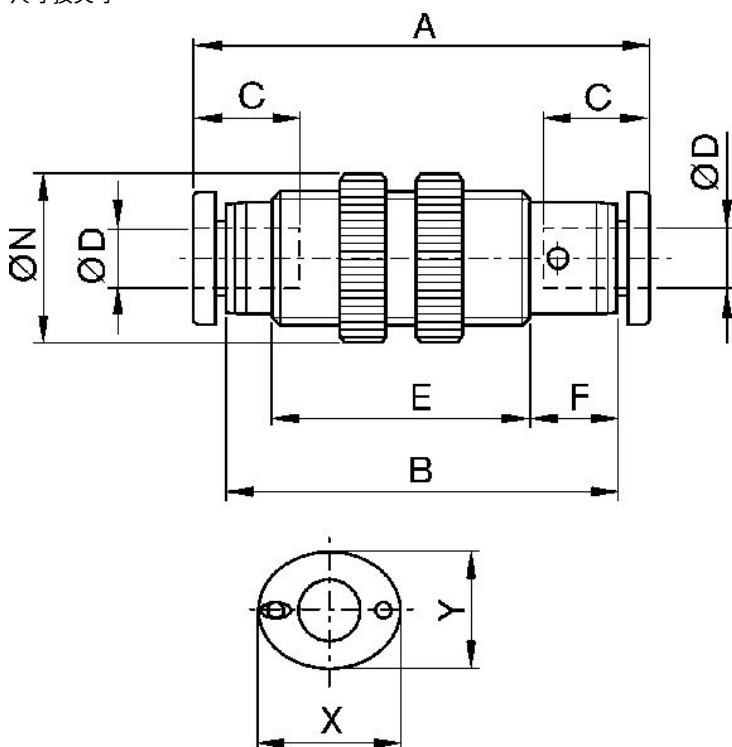
止回阀, 系列 QR1-ASS

快插接头
快插接头



压缩空气接口 1	压缩空气接口 2	额定流量 Q_n 1 向 2 [l/min]	材料 : 外壳	物料号
$\varnothing 5/32$	$\varnothing 5/32$	300	聚酯树脂	R432000466
$\varnothing 1/4$	$\varnothing 1/4$	300	聚酯树脂	R432000463
$\varnothing 5/16$	$\varnothing 5/16$	300	聚酯树脂	R432000465
$\varnothing 3/8$	$\varnothing 3/8$	300	聚酯树脂	R432000464
$\varnothing 1/2$	$\varnothing 1/2$	300	聚酯树脂	R432000462

尺寸按英寸

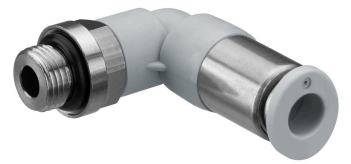


物料号	$\varnothing D$	A	B	C	E	F	$\varnothing N$	X	Y
R432000466	$\varnothing 5/32$	1.474	37.4	0.63	-	0.37	0.67	0.473	0.394
R432000463	$\varnothing 1/4$	1.635	41.5	0.67	-	0.39	0.801	0.552	0.473
R432000465	$\varnothing 5/16$	1.86	47.2	0.729	-	0.418	0.906	0.63	0.552

物料号	Ø D	A	B	C	E	F	Ø N	X	Y
R432000464	Ø 3/8	2.124	52.9	0.827	-	0.445	1.143	0.749	0.67
R432000462	Ø 1/2	2.494	63.3	0.887	-	0.414	1.261	0.906	0.827

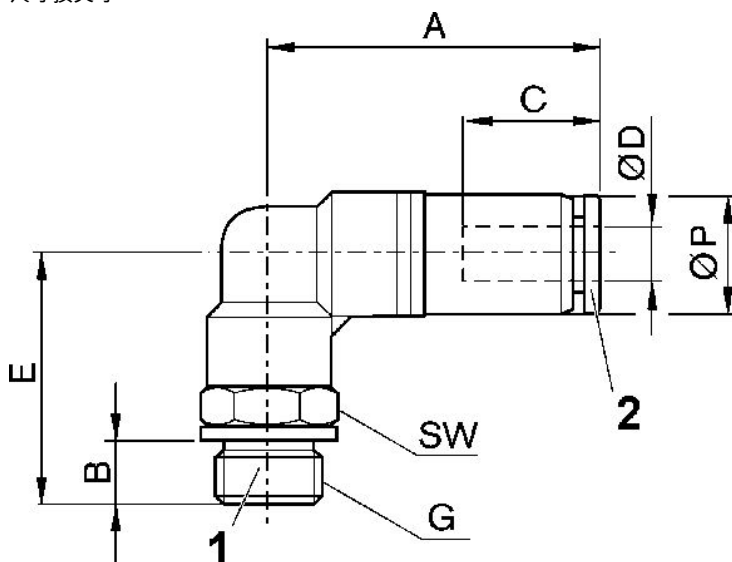
止回阀, 系列 QR1-AVT

外螺纹
快插接头



压缩空气接口 1	压缩空气接口 2	额定流量 Q_n 1 向 2 [l/min]	材料 : 外壳	物料号
10-32 UNF	Ø5/32	300	黄铜	R432000456
10-32 UNF	Ø1/4	300	黄铜	R432000448
1/8 NPT	Ø5/32	300	黄铜	R432000455
1/8 NPT	Ø1/4	300	黄铜	R432000446
1/8 NPT	Ø5/16	300	黄铜	R432000452
1/4 NPT	Ø1/4	300	黄铜	R432000447
1/4 NPT	Ø5/16	300	黄铜	R432000453
1/4 NPT	Ø 3/8	300	黄铜	R432000449
3/8 NPT	Ø5/16	300	黄铜	R432000454
3/8 NPT	Ø 3/8	300	黄铜	R432000450
3/8 NPT	Ø1/2	300	黄铜	R432000444
1/2 NPT	Ø 3/8	300	黄铜	R432000451
1/2 NPT	Ø1/2	300	黄铜	R432000445

尺寸按英寸



物料号	G	Ø D	A	B	C	E	SW	Ø P
R432000456			1.21	0.217	0.63	0.871	7/16	0.411
R432000448			1.257	0.217	0.67	0.89	1/2	0.489
R432000455			1.21	0.315	0.63	0.969	7/16	0.411
R432000446			1.257	0.315	0.67	0.945	1/2	0.489
R432000452			1.608	0.315	0.729	1.064	9/16	0.567
R432000447			1.257	0.433	0.67	1.103	9/16	0.489
R432000453			1.608	0.433	0.729	1.221	9/16	0.567
R432000449			1.875	0.433	0.827	1.379	11/16	0.693
R432000454			1.608	0.473	0.729	1.261	11/16	0.567
R432000450			1.875	0.473	0.827	1.418	11/16	0.693
R432000444			2.187	0.473	0.887	1.497	7/8	0.835
R432000451			1.875	0.591	0.827	1.537	7/8	0.693
R432000445			2.187	0.591	0.887	1.615	7/8	0.835

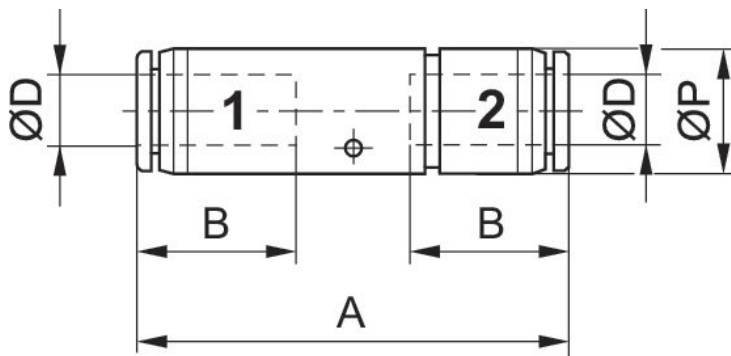
单向阀, 系列 QR1-SKR

快插接头
快插接头



压缩空气接口 1	压缩空气接口 2	额定流量 Q_n 1 向 2 [l/min]	材料 : 外壳	物料号
Ø5/32	Ø5/32	280	聚酯树脂	R432000433
Ø1/4	Ø1/4	280	聚酯树脂	R432000430
Ø5/16	Ø5/16	280	聚酯树脂	R432000432
Ø 3/8	Ø 3/8	280	聚酯树脂	R432000431
Ø1/2	Ø1/2	280	聚酯树脂	R432000429

尺寸按英寸



物料号	Ø D	Ø D	A	B	Ø P
R432000433	Ø5/32	Ø5/32	1.407	0.63	0.394
R432000430	Ø1/4	Ø1/4	1.639	0.67	0.489
R432000432	Ø5/16	Ø5/16	2.033	0.729	0.567
R432000431	Ø 3/8	Ø 3/8	3.046	0.827	0.985
R432000429	Ø1/2	Ø1/2	3.152	0.887	0.985

Efficient pneumatic solutions, our program: cylinders and drives, valves and valve systems, air supply management



Visit us: [Emerson.com/Aventics](https://www.emerson.com/Aventics)

Your local contact: [Emerson.com/contactus](https://www.emerson.com/contactus)



[Emerson.com](https://www.emerson.com)



[Facebook.com/EmersonAutomationSolutions](https://www.facebook.com/EmersonAutomationSolutions)



[LinkedIn.com/company/Emerson-Automation-Solutions](https://www.linkedin.com/company/Emerson-Automation-Solutions)



[Twitter.com/EMR_Automation](https://twitter.com/EMR_Automation)

An example configuration is depicted on the title page. The delivered product may thus vary from that in the illustration. Subject to change. This Document, as well as the data, specifications and other information set forth in it, are the exclusive property of AVENTICS GmbH. It may not be reproduced or given to third parties without its consent. Only use the AVENTICS products shown in industrial applications. Read the product documentation completely and carefully before using the product. Observe the applicable regulations and laws of the respective country. When integrating the product into applications, note the system manufacturer's specifications for safe use of the product. The data specified only serve to describe the product. No statements concerning a certain condition or suitability for a certain application can be derived from our information. The information given does not release the user from the obligation of own judgment and verification. It must be remembered that the products are subject to a natural process of wear and aging.

The Emerson logo is a trademark and service mark of Emerson Electric Co. Brand logotype are registered trademarks of one of the Emerson family of companies. All other marks are the property of their respective owners. © 2019 Emerson Electric Co. All rights reserved.



CONSIDER IT SOLVED™