

## Fijaciones de sensor



**AVENTICS™**

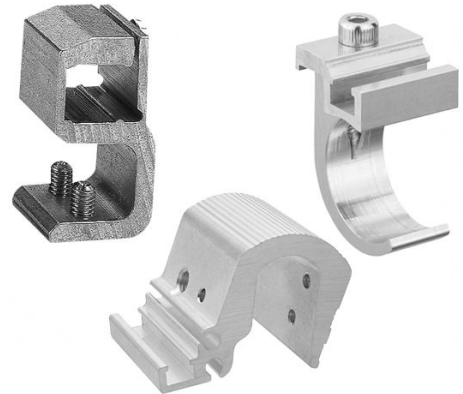
**Fijaciones de detector  
AVENTICS**

  
**EMERSON™**

## Fijación de sensor, Serie CB1

Las fijaciones de detectores AVENTICS están diseñados especialmente para montar los detectores AVENTICS en varios cilindros. Montaje de sensores en distintas series de cilindros

- Instalación de detectores en varias series de cilindros

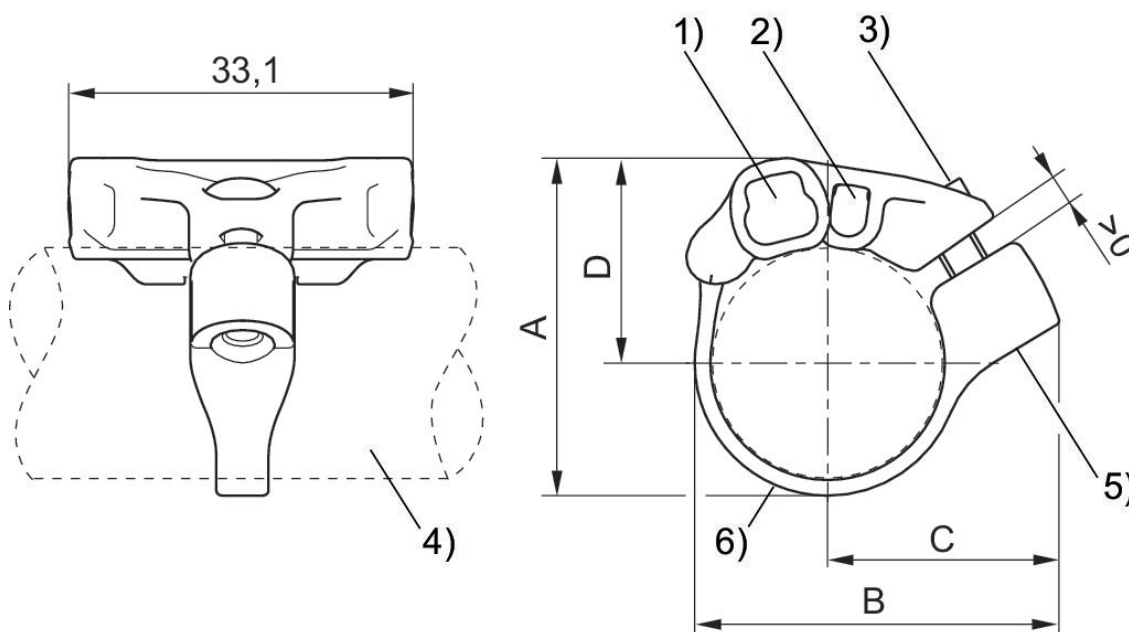


Fijación de sensor, Serie CB1

ST4  
ST6



Cilindro-Ø mín. [mm]	Material	N° de material
16	Poliamida, Acero inoxidable	R412021791
20	Poliamida, Acero inoxidable	R412021792
25	Poliamida, Acero inoxidable	R412021793



1) Ranura de sensor para ST6 2) Ranura de sensor para ST4 3) Tornillo de fijación (de acero inoxidable) 4) Perfil de cilindro 5) Inserto roscado (de acero inoxidable) 6) Cinta de sujeción

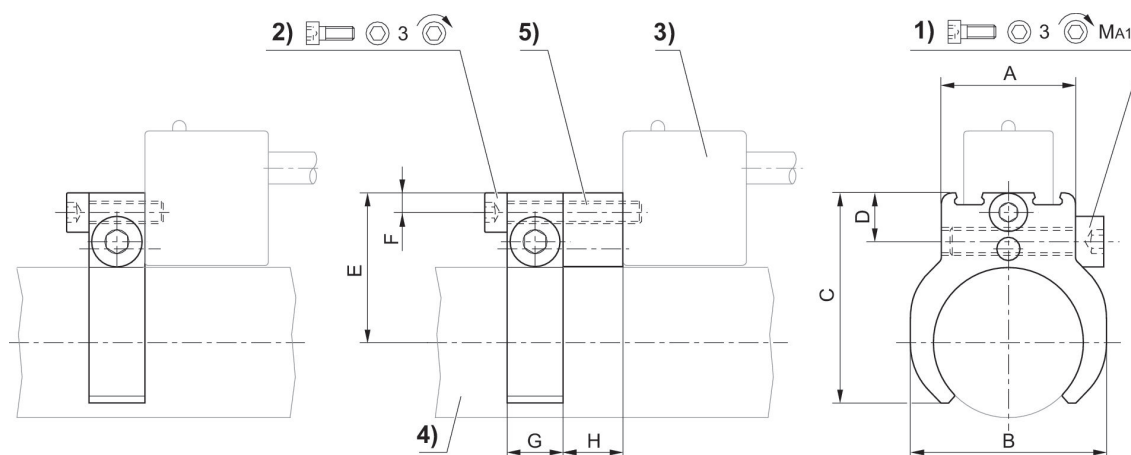
N° de material	A	B	C	D
R412021791	27.7	32.5	22.1	17.3
R412021792	32.4	35	22.4	19.7
R412021793	37.4	39.5	24.3	22.2

Fijación de sensor, Serie CB1

SN1  
SN2



Cilindro-Ø mín. [mm]	Cilindro-Ø máx. [mm]	Material	N° de material
10	10	Aluminio	1827020065
12	12	Aluminio	1827020066
16	16	Aluminio	1827020067
20	20	Aluminio	1827020068
25	25	Aluminio	1827020069

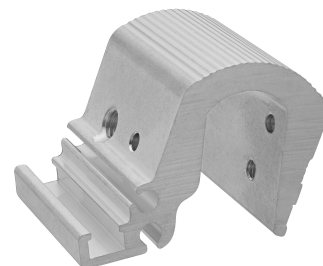


1) tornillo de apriete 2) tornillo de fijación para sensores 3) sensor 4) perfil de cilindro 5) pieza intermedia (en caso necesario)

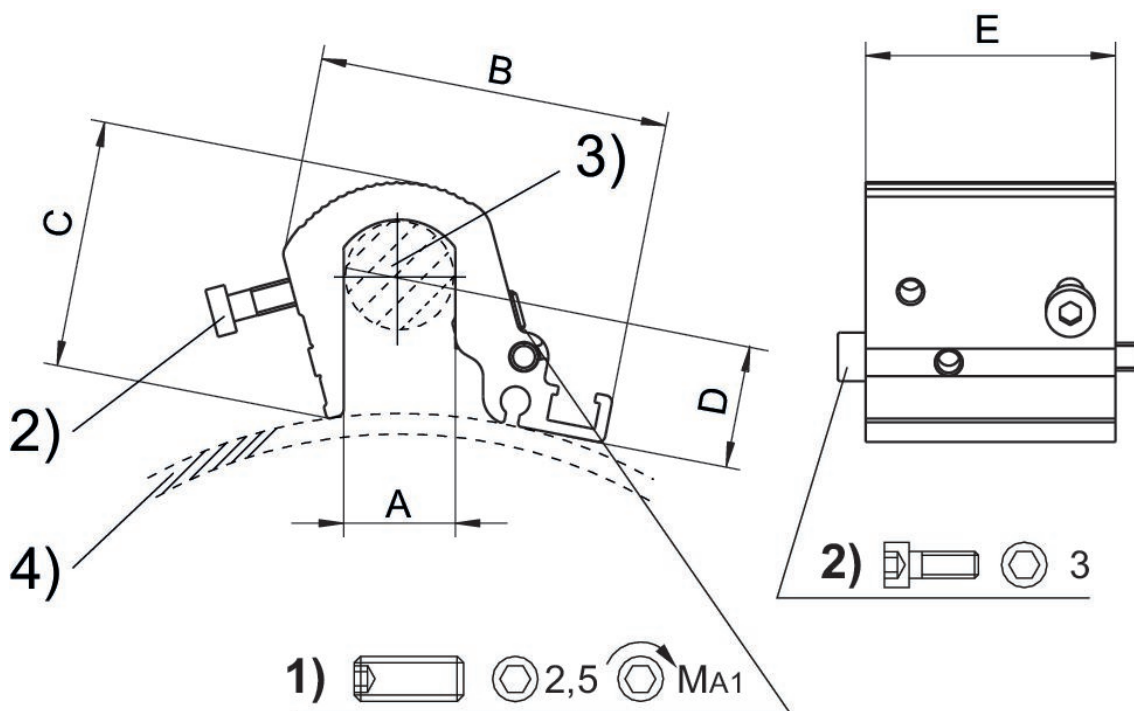
Ø cilindro mm	N° de material	A	B	C	D	E	F	G	H	1)
10	1827020065	16	16	23.5	8.2	18.7	3.5	10	10.7	M4x14
12	1827020066	16	20	25.5	8.2	19.9	3.5	10	10.7	M4x14
16	1827020067	20	24	29.7	8.7	21.9	3.5	10	10.7	M4x25
20	1827020068	20	28	33	8.7	24.1	3.5	10	10.7	M4x25
25	1827020069	24	35	37.5	8.7	26.6	3.5	10	10.7	M4x25

Ø cilindro mm	MA1 [Nm]
10	1 +0,3
12	1 +0,3
16	1 +0,3
20	1 +0,3
25	1 +0,3

Fijación de sensor, Serie CB1



Cilindro-Ø mín. [mm]	Cilindro-Ø máx. [mm]	para sensor	Material	N° de material
160	200	ST6, SN2, SN6, SN1, SM6	Aluminio	R412017979
250	320	ST6, SN2, SN6, SN1, SM6	Aluminio	R412017980



1) Tornillo prisionero de apriete 2) Tornillos de fijación para sensor 3) Tirante 4) Perfil de cilindro

Ø cilindro	N° de material	A	B	C	D	E	MA1 [Nm]
160 - 200 mm	R412017979	16	51	36	6.8	36	2
250 - 320 mm	R412017980	24	56	44.5	6.8	36	2

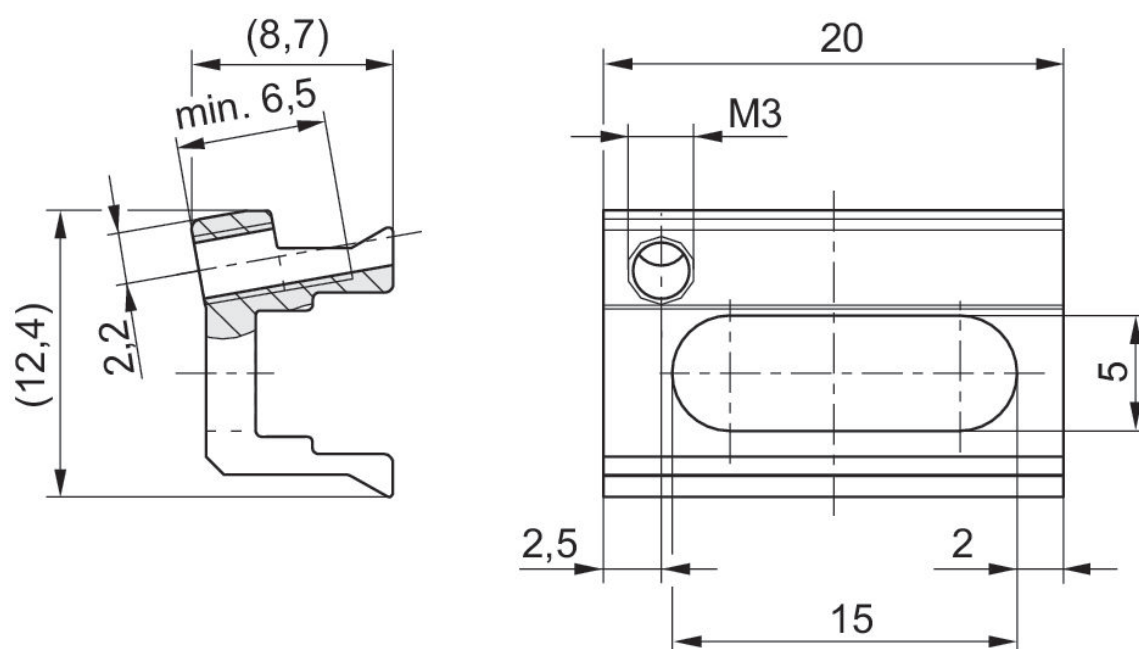
Volumen de suministro: Incl. tornillos de fijación

Fijación de sensor, Serie CB1

ST6

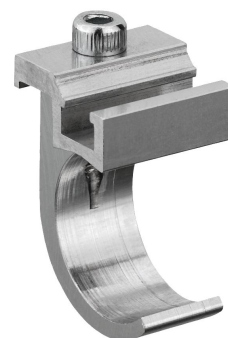


Material	N° de material
Aluminio	R422100250

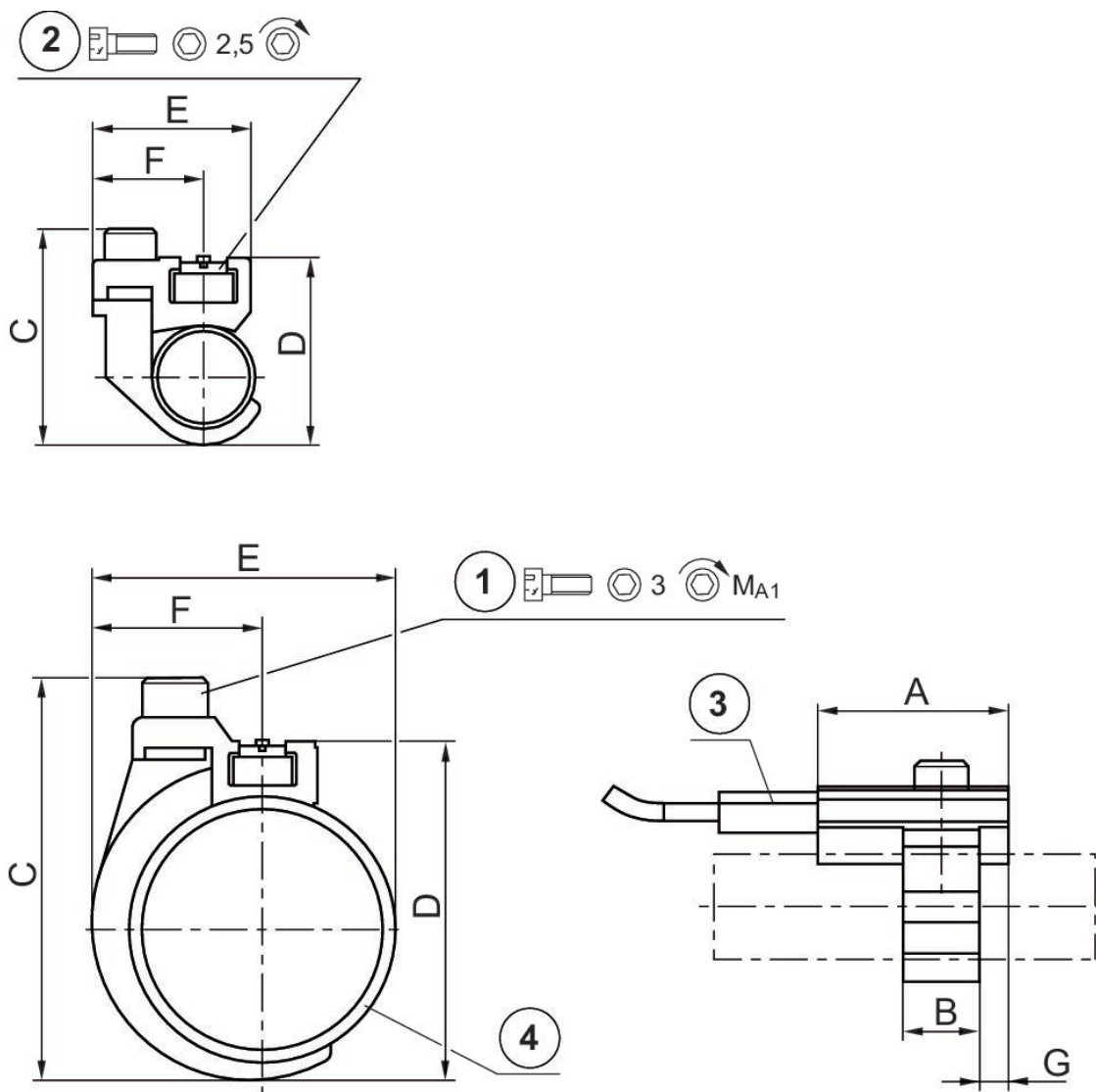


Volumen de suministro: con tornillo prisionero

## Fijación de sensor, Serie CB1

ST6  
SM6

Cilindro-Ø mín. [mm]	Material	N° de material
10	Aluminio	1827020296
12	Aluminio	1827020297
16	Aluminio	1827020298
20	Aluminio	1827020299
25	Aluminio	1827020300



1) tornillo de fijación 2) tornillo de fijación para sensores 3) sensor 4) tubo de cilindro

N° de material	Ø cilindro	A	B	C	D	E	F	G	Tornillo de fijación	MA1 [Nm]
1827020296	10 mm	20	8	24	19	17.5	11.8	3	M3x8	1 +0,2
1827020297	12 mm	20	8	26	22	19	11.8	3	M3x8	1 +0,2
1827020298	16 mm	20	12	34	30	23	13.8	4	M4x10	2 +0,3
1827020299	20 mm	20	12	38	32	26	13.8	4	M4x10	2 +0,3
1827020300	25 mm	20	12	43	37	31	13.8	4	M4x10	2 +0,3

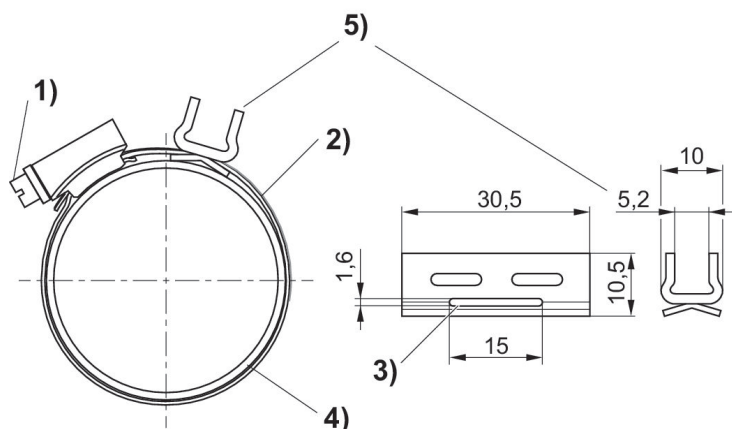


Fijación de sensor, Serie CB1

ST6



Cilindro-Ø mín. [mm]	Cilindro-Ø máx. [mm]	Material	N° de material
25	32	Acero inoxidable	R412024050
40	40	Acero inoxidable	R412024051
50	50	Acero inoxidable	R412024052
63	63	Acero inoxidable	R412024053
25	63	Acero inoxidable	R412024054



1) Tornillo de fijación 2) Cinta de sujeción 3) Paso para cinta de sujeción 4) Tubo de cilindro 5) Soporte de sensor

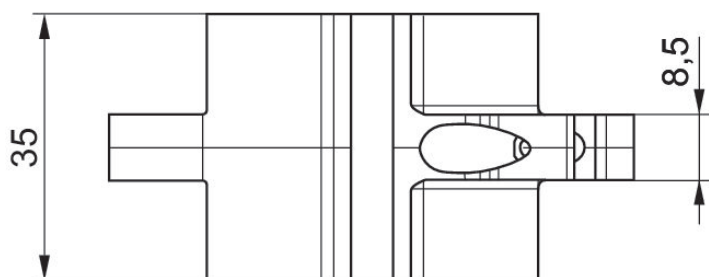
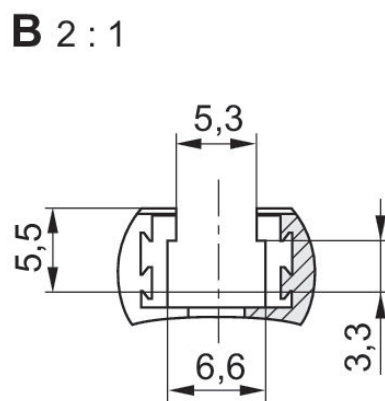
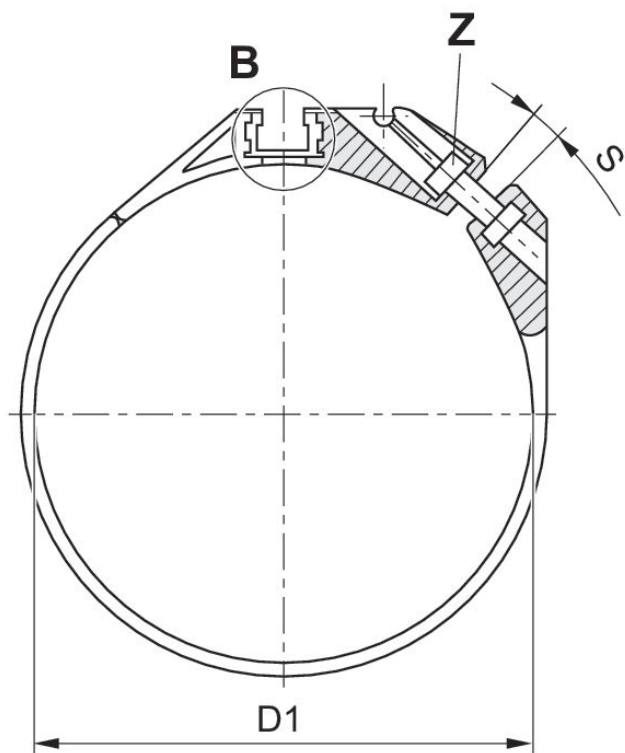
N° de material	Ø tubo de cilindro	Para serie	Fig.
R412024050	25 - 32 mm	ST6	Fig. B
R412024051	40 mm	ST6	Fig. B
R412024052	50 mm	ST6	Fig. B
R412024053	63 mm	ST6	Fig. B
R412024054	25 - 63 mm	ST6	Fig. A

## Fijación de sensor, Serie CB1

ST6



Cilindro-Ø mín. [mm]	Cilindro-Ø máx. [mm]	Material	N° de material
32	32	Polioximetileno, Aluminio	R412025665
40	40	Polioximetileno, Aluminio	R412025666
50	50	Polioximetileno, Aluminio	R412025667
63	63	Polioximetileno, Aluminio	R412025668

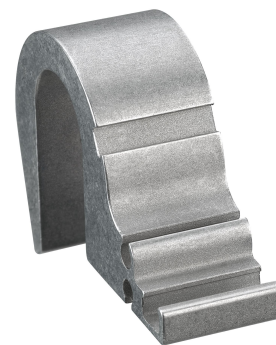


N° de material	D1	S	Z
R412025665	34	35	ISO 4762 - M3 x 10 A2
R412025666	42	43	ISO 4762 - M3 x 12 A2
R412025667	52,9	54	ISO 4762 - M3 x 12 A2
R412025668	65	66	ISO 4762 - M3 x 12 A2

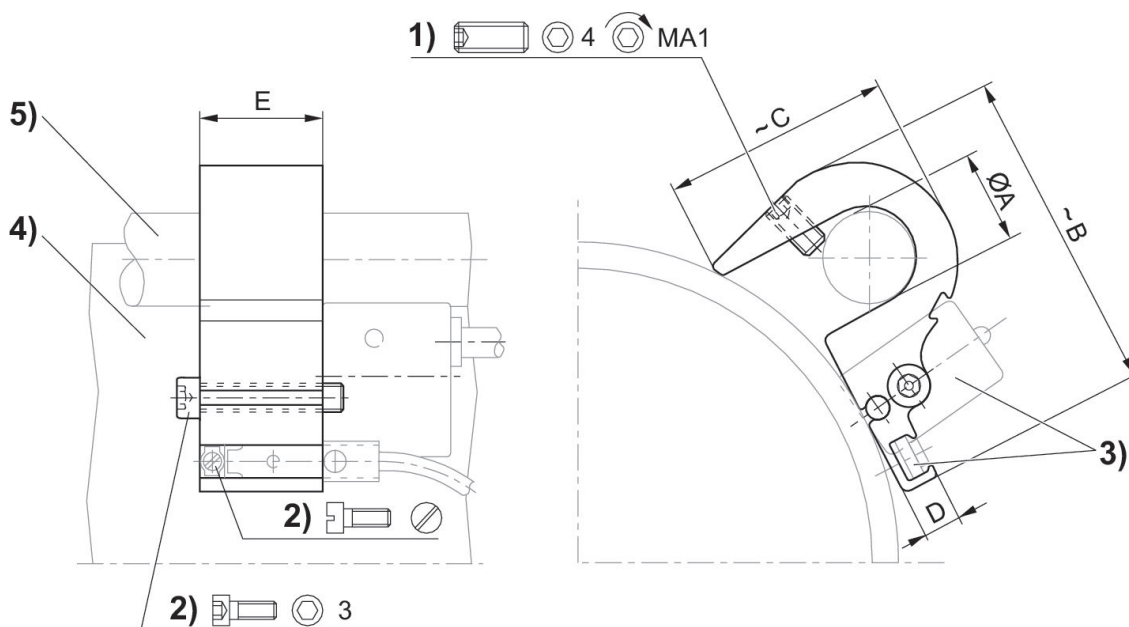
S = anchura de separación máx. recomendada [mm]

Fijación de sensor, Serie CB1

ST6  
SM6  
SN1  
SN2



Cilindro-Ø mín. [mm]	Cilindro-Ø máx. [mm]	Material	N° de material
125	125	Aluminio	1827020292



1) tornillo prisionero de apriete 2) tornillo de fijación para sensor 3) sensor 4) perfil de cilindro 5) tirante

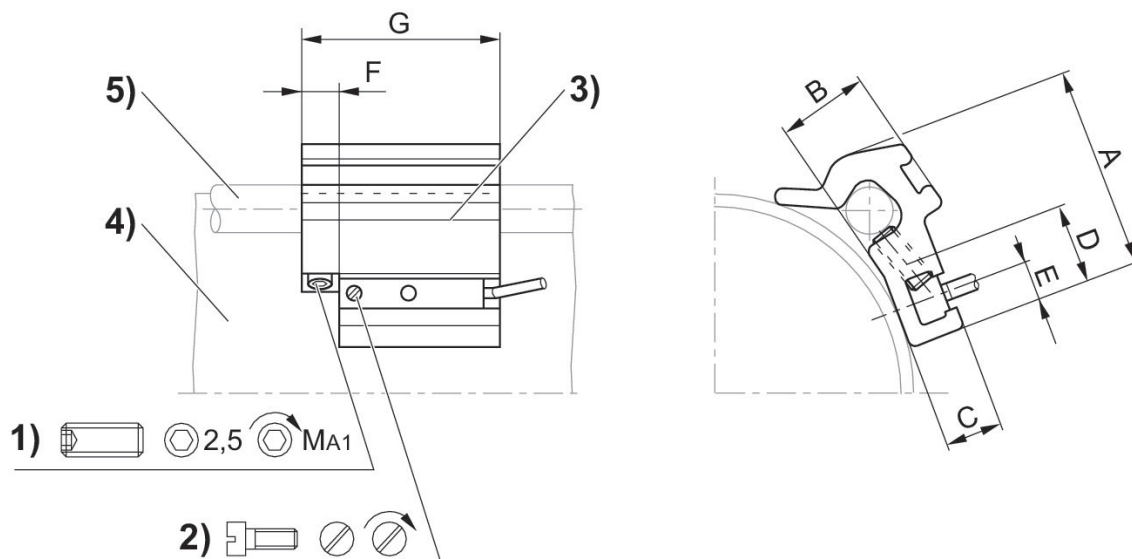
N° de material	Ø cilindro	Ø A	B	C	D	E	tornillo prisionero de apriete	MA1 [Nm]
1827020292	125 mm	12	45	29	6.5	21	M5x10	2

Fijación de sensor, Serie CB1

ST6  
SM6



Cilindro-Ø mín. [mm]	Cilindro-Ø máx. [mm]	Material	N° de material
32	40	Aluminio	1827020282
50	63	Aluminio	1827020283
80	100	Aluminio	1827020284



1) tornillo prisionero de apriete 2) tornillo de fijación para sensor 3) sensor 4) perfil de cilindro 5) tirante

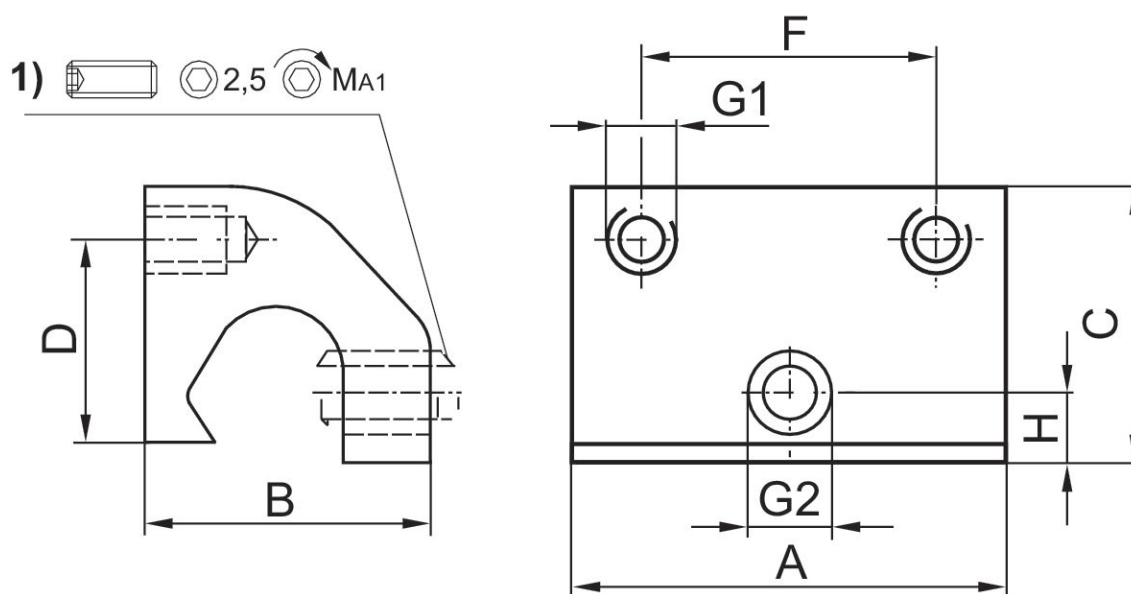
N° de material	Ø cilindro	A	B	C	D	E	F	G	tornillo prisionero de apriete	MA1 [Nm]
1827020282	32 - 40 mm	26	10	7	14	5	8	40	M5x8	2 ±0,2
1827020283	50 - 63 mm	32.5	15.5	7	14	5	8	40	M5x10	2 ±0,2
1827020284	80 - 100 mm	43	17	6.9	14	5	8	40	M5x16	2 ±0,2

Fijación de sensor, Serie CB1

SN6



Cilindro-Ø mín. [mm]	Cilindro-Ø máx. [mm]	Material	N° de material
32	63	Aluminio	3220613562
80	125	Aluminio	3220643562



1) tornillo prisionero de apriete

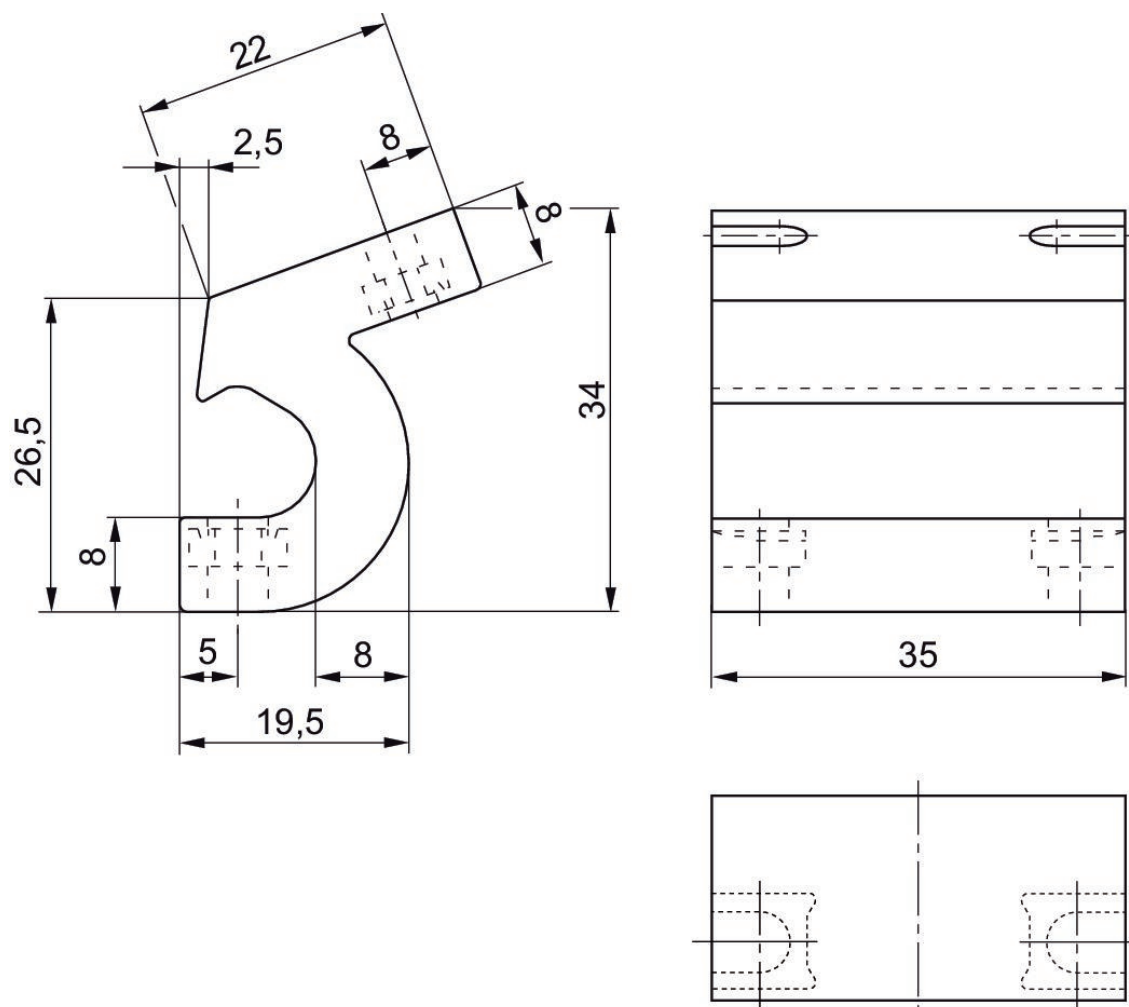
N° de material	Ø cilindro	A	B	C	D	F	G1	G2	H	MA1 [Nm]
3220643562	80 - 125 mm	35	22	21	12	23	M4	M5	5	1,8 +0,4
3220613562	32 - 63 mm	35	22	21	16	23	M4	M5	5	1,8 +0,4

Fijación de sensor, Serie CB1

SN6



Cilindro-Ø mín. [mm]	Cilindro-Ø máx. [mm]	Material	N° de material
32	63	Poliamida	5230033502

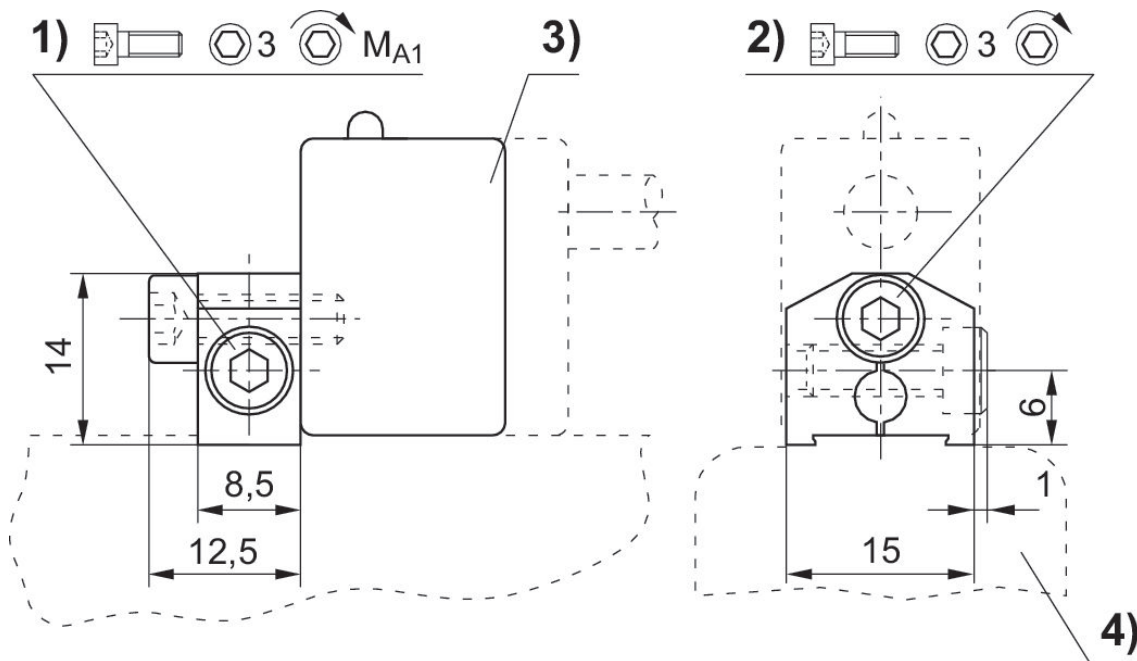


Fijación de sensor, Serie CB1

SN1  
SN2



Material	N° de material
Aluminio	1827020084



1) tornillo de apriete 2) tornillo de fijación para sensores 3) sensor 4) perfil de cilindro

N° de material	Tornillo de apriete	MA1 [Nm]
1827020084	M4x12	2

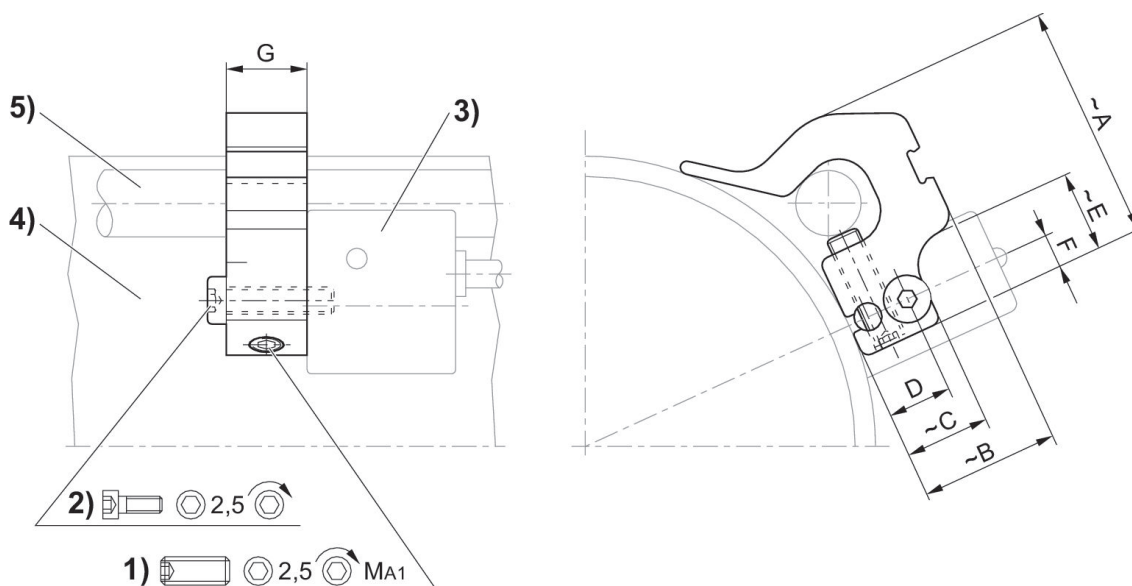


Fijación de sensor, Serie CB1

SN1  
SN2



Cilindro-Ø mín. [mm]	Cilindro-Ø máx. [mm]	Material	N° de material
32	40	Aluminio	1827020081
50	63	Aluminio	1827020082
80	100	Aluminio	1827020083



1) tornillo prisionero de apriete 2) tornillo de fijación para sensor 3) sensor 4) perfil de cilindro 5) tirante

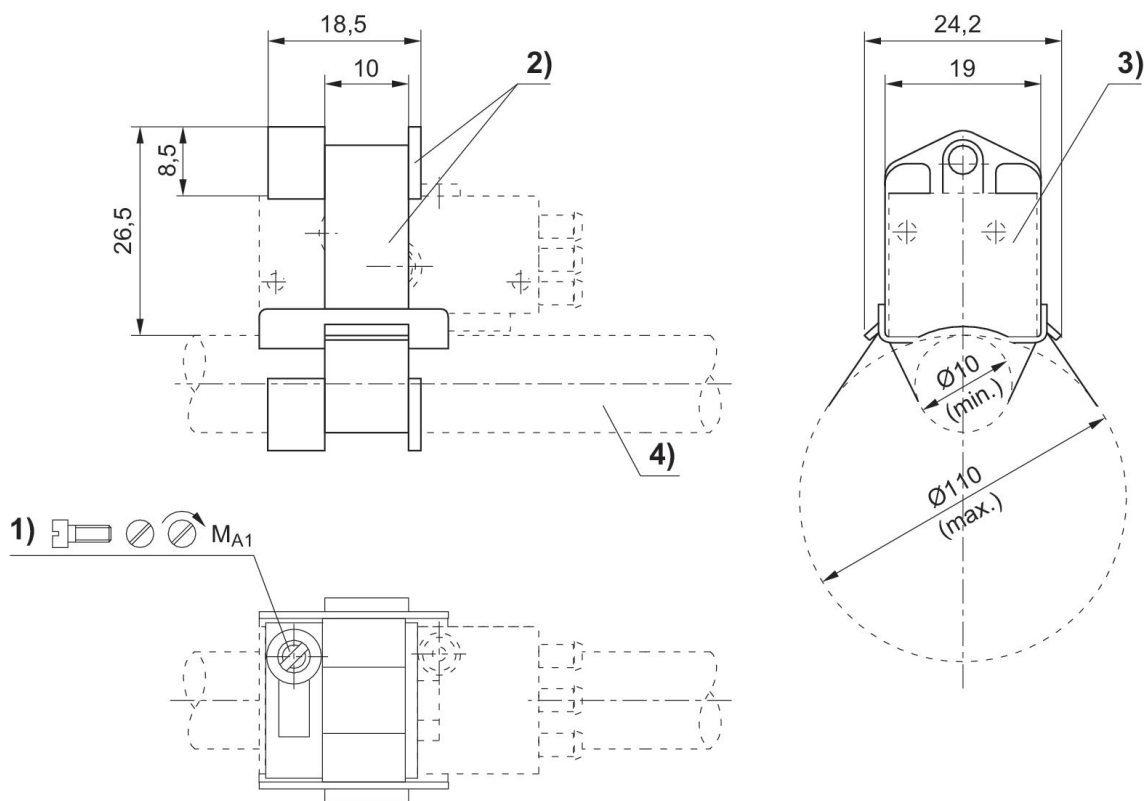
N° de material	Ø cilindro mm	A	B	C	D	E	F	G	tornillo prisionero de apriete	MA1 [Nm]
1827020081	32 - 40 mm	25.3	12.5	12.5	9.5	-	5	16	M5x16	1 +0,3
1827020082	50 - 63 mm	28.7	15.6	12.5	9.5	12	5	12	M5x16	1 +0,3
1827020083	80 - 100 mm	33.8	23	12.5	9.5	12	5	12	M5x16	1 +0,3

Fijación de sensor, Serie CB1

SP1



Cilindro-Ø mín. [mm]	Cilindro-Ø máx. [mm]	Material	N° de material
10	100	Aluminio	1821205002



1) tornillo de apriete 2) cinta de sujeción con soporte 3) sensor 4) tubo de cilindro

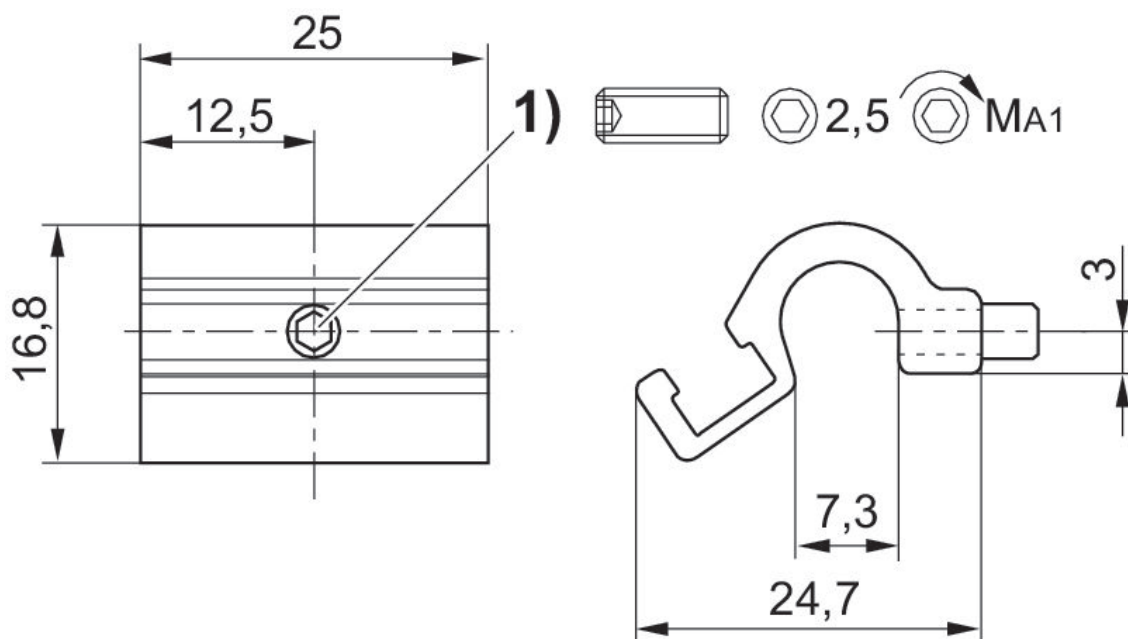
N° de material	Ø cilindro	MA1 [Nm]
1821205002	10 - 100 mm	<0,5
tablefooter		

Fijación de sensor, Serie CB1

ST6  
SM6



Cilindro-Ø máx. [mm]	Material	N° de material
25	Aluminio	R412022357



1) Tornillo de fijación

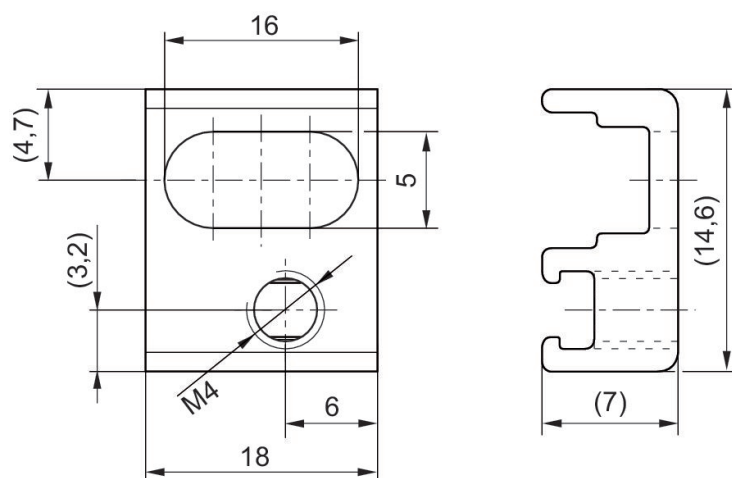
N° de material	Ø cilindro máx.	MA1 [Nm]
R412022357	25 mm	1 + 0,3

Fijación de sensor, Serie CB1

ST6



Material	N° de material
Aluminio	R412025944

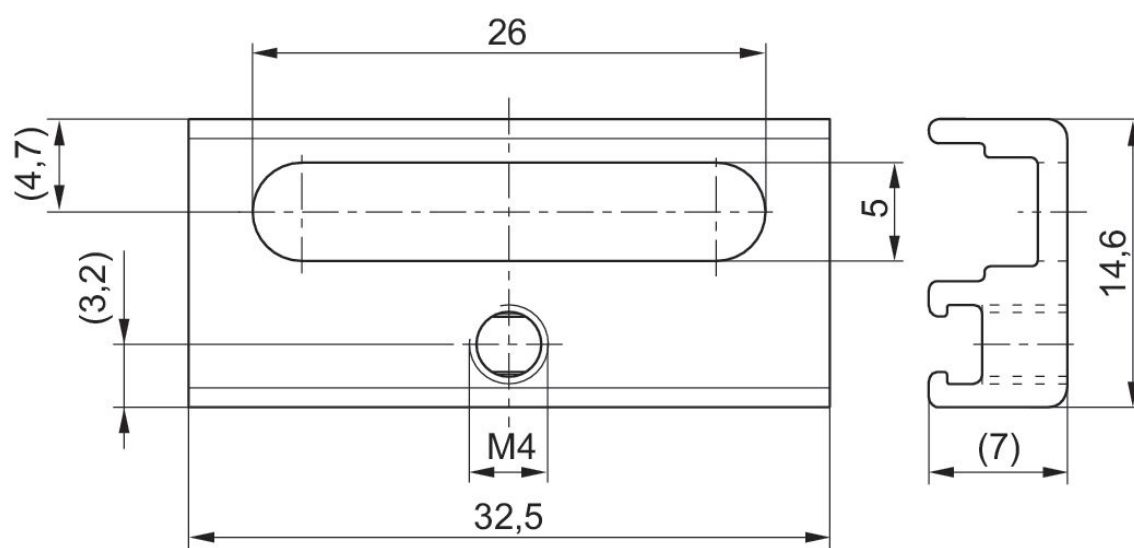


Fijación de sensor, Serie CB1

ST6



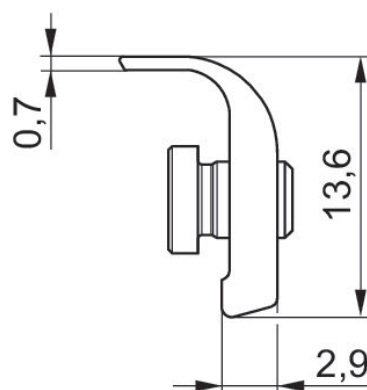
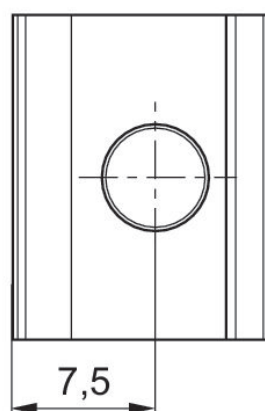
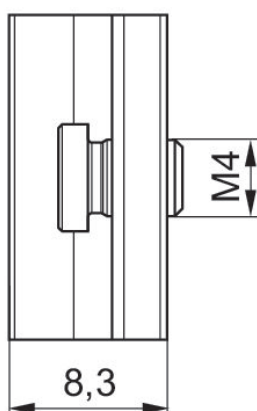
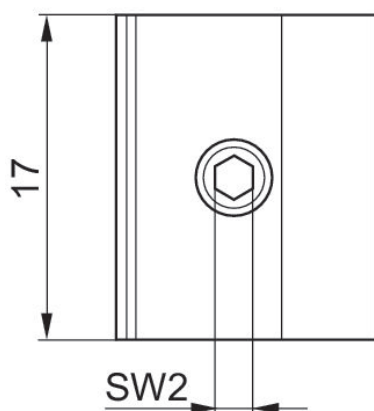
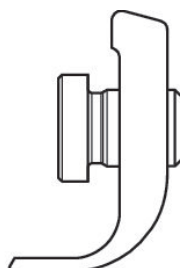
Material	N° de material
Aluminio	R402000040



Fijación de sensor



Material	N° de material
Aluminio	R412010906

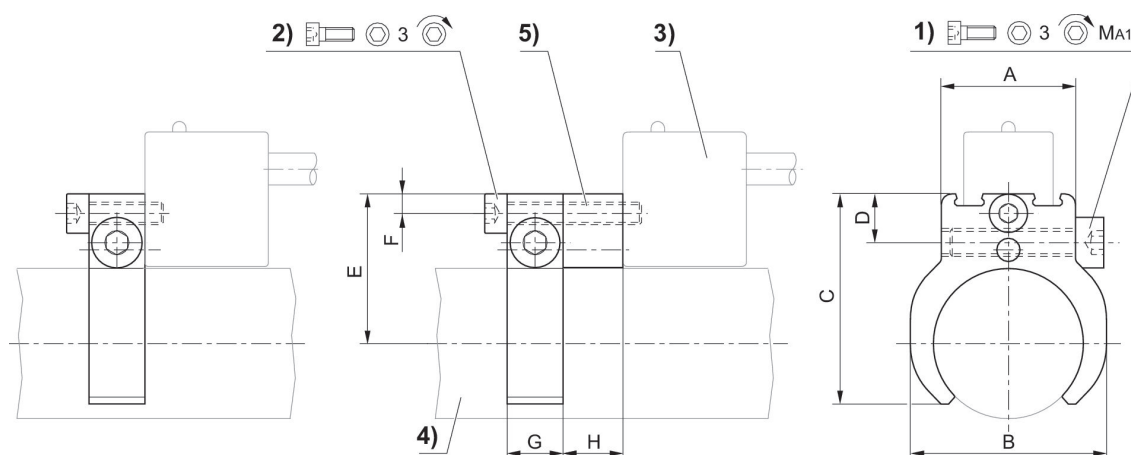


Fijación de sensor

SN2



Cilindro-Ø mín. [mm]	Cilindro-Ø máx. [mm]	Material	N° de material
32	32	Aluminio	1827020142
40	40	Aluminio	1827020143
50	50	Aluminio	1827020144
63	63	Aluminio	1827020266



1) tornillo de apriete 2) tornillo de fijación para sensores 3) sensor 4) perfil de cilindro 5) pieza intermedia (en caso necesario)

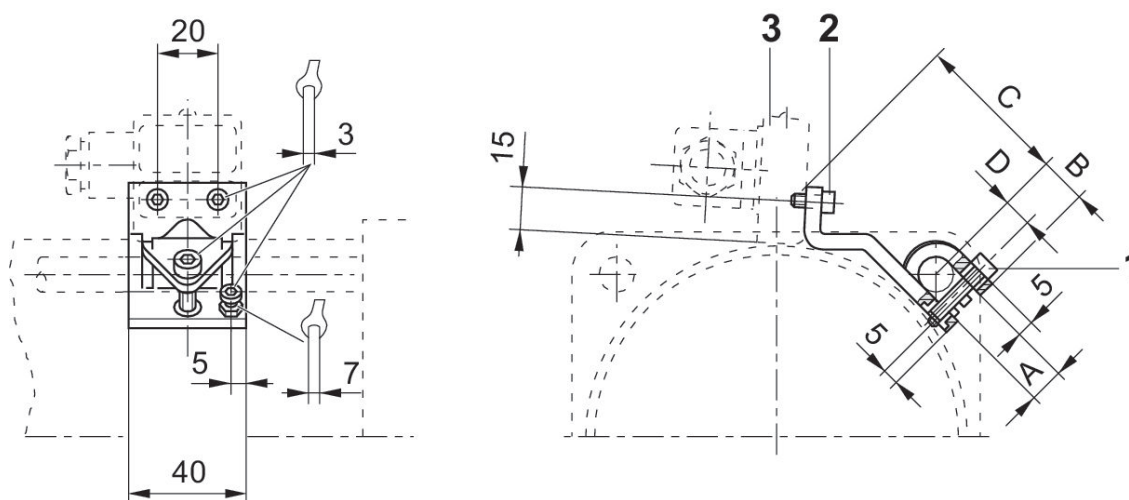
Ø cilindro mm	N° de material	A	B	C	D	E	F	G	H	1)
10	1827020065	16	16	23.5	8.2	18.7	3.5	10	10.7	M4x14
12	1827020066	16	20	25.5	8.2	19.9	3.5	10	10.7	M4x14
16	1827020067	20	24	29.7	8.7	21.9	3.5	10	10.7	M4x25
20	1827020068	20	28	33	8.7	24.1	3.5	10	10.7	M4x25
25	1827020069	24	35	37.5	8.7	26.6	3.5	10	10.7	M4x25

Ø cilindro mm	MA1 [Nm]
10	1 +0,3
12	1 +0,3
16	1 +0,3
20	1 +0,3
25	1 +0,3

Fijación de sensor, Serie CB1



Cilindro-Ø mín. [mm]	Cilindro-Ø máx. [mm]	Material	N° de material
125	125	Aluminio	1827020076
160	200	Aluminio	1827020077
250	250	Aluminio	1827020078



1) tornillo de fijación 2) tornillo de fijación para sensores 3) sensor

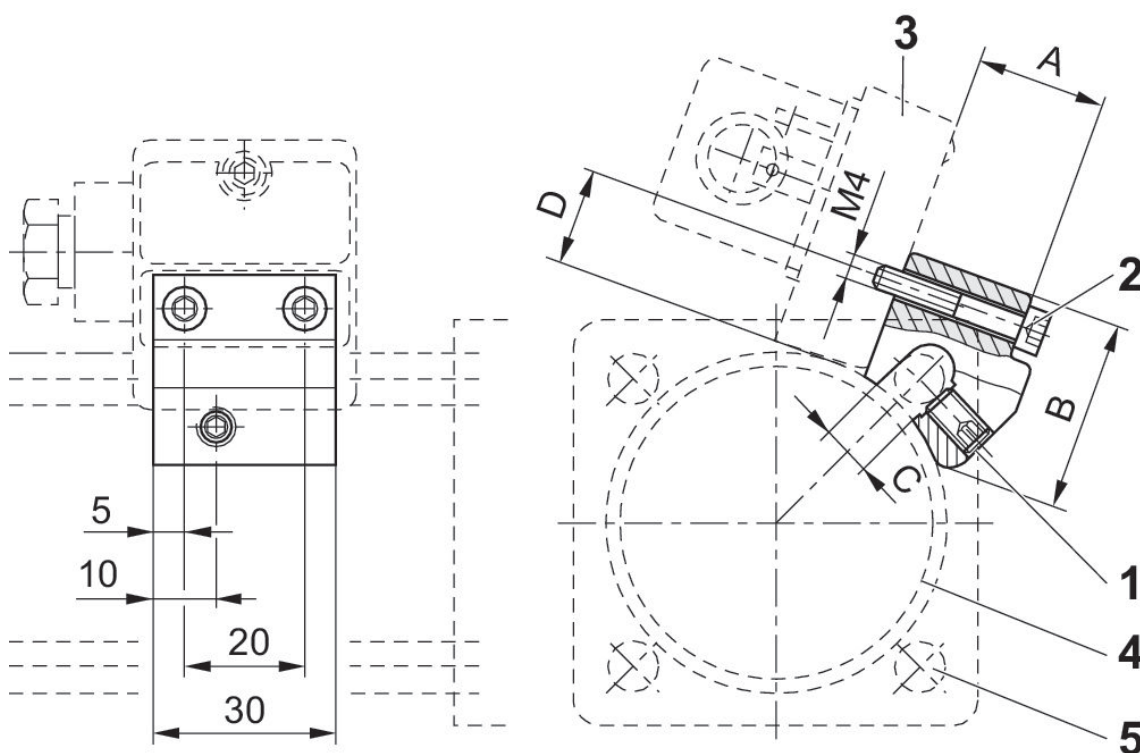
N° de material	A +0,5	B ±1	C ±2	D
1827020076	12	15	54	9
1827020077	16	17	53	11
1827020078	20	19	60	13



Fijación de sensor, Serie CB1



Cilindro-Ø mín. [mm]	Cilindro-Ø máx. [mm]	Material	N° de material
32	40	Aluminio	1827020056
50	63	Aluminio	1827020057
80	100	Aluminio	1827020058



1) tornillo prisionero de apriete 2) tornillo de fijación para sensor 3) sensor 4) perfil de cilindro 5) tirante

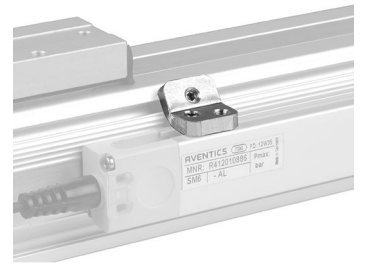
N° de material	A	B	C	D	SW
1827020056	19.5	30	6	15	3
1827020057	24.5	30	8	15	3
1827020058	29.5	31	10	15	3

chapa de fijación



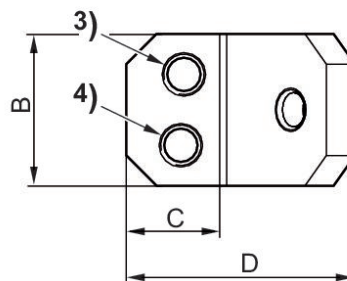
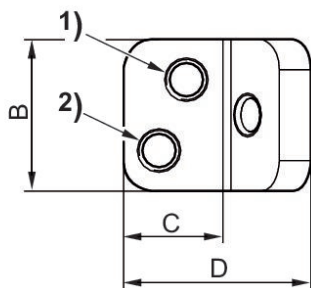
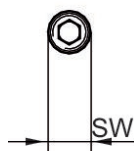
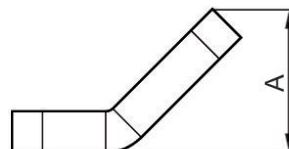
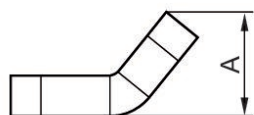
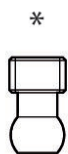
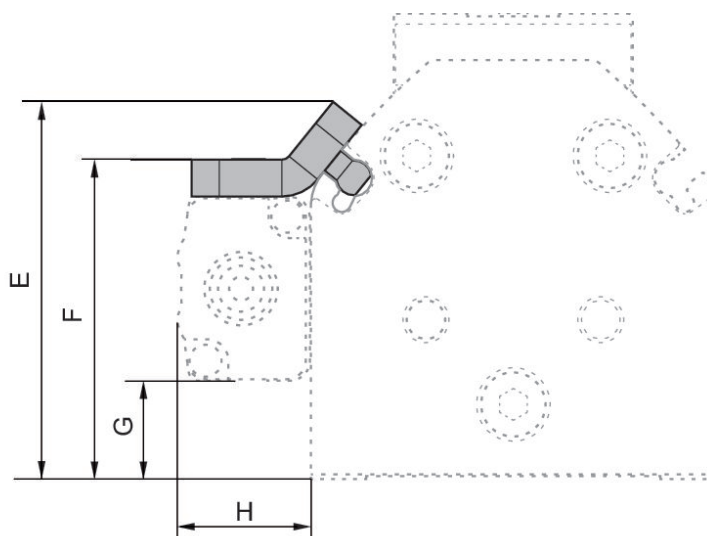
Material	N° de material
Aluminio	3224161000
Aluminio	3224171000
Aluminio	3224181000

Fijación de sensor, Serie CB1



Material	N° de material
Aluminio	R412022298

Dimensiones



\* Tornillo prisionero (latón)

2 juegos de soportes de apriete para SM6-AL 109 - 469 mm  
3 juegos de soportes de apriete para SM6-AL 505 - 793 mm  
4 juegos de soportes de apriete para SM6-AL 829 - 1009 mm

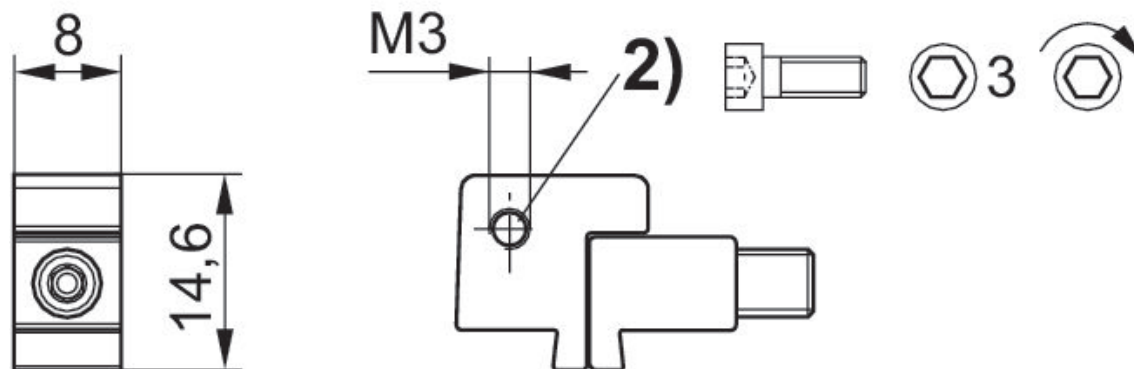
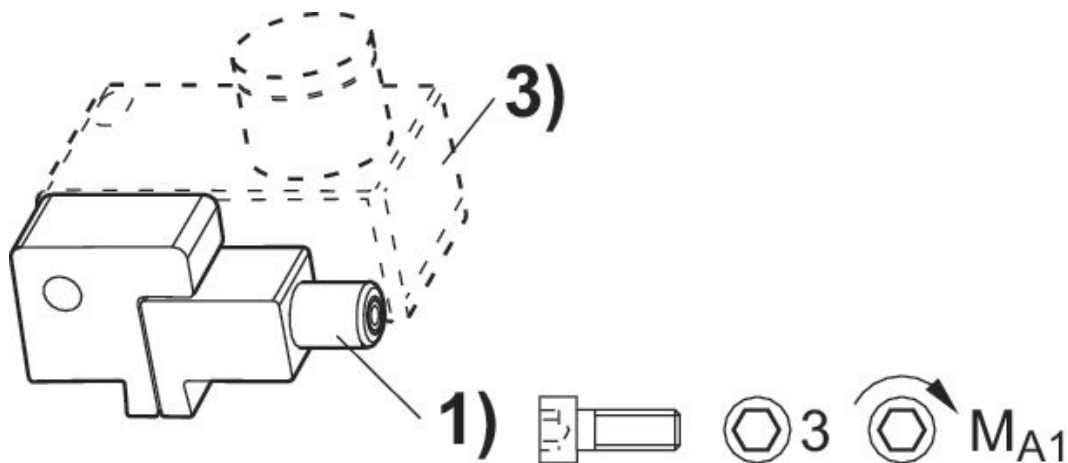
Ø del émbolo	Obs.	A	B	C	D	E	F	G	H	SW
25	1)	10.3	15	9.8	18.5	41	34.7	10.7	14.4	2
32	2)	10.3	15	9.8	18.5	46.7	40.4	16.4	14.4	2
40	3)	14.2	15	9.2	22.6	55	45.2	21.1	14.4	2
50	4)	14.2	15	9.2	22.6	60.6	50.5	26.5	14.4	2

Fijación de sensor, Serie CB1

SN3



Material	N° de material
Aluminio	1827020386



1) tornillo de apriete 2) tornillo de fijación para sensores 3) sensor

N° de material	Tornillo de apriete	MA1 [Nm]
1827020386	M3x25	1,8 +0,4

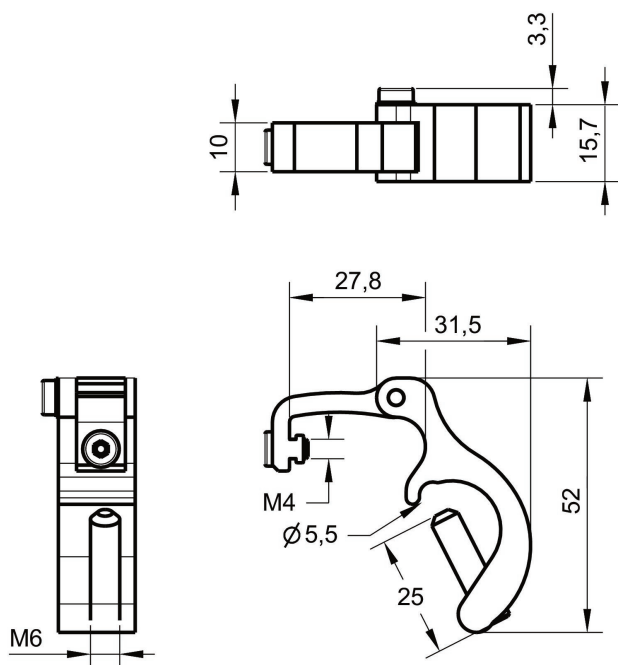
Fijación de sensor SM6-AL

TaskMaster®



para sensor	Material	N° de material
SM6-AL	Aluminio	R432038613

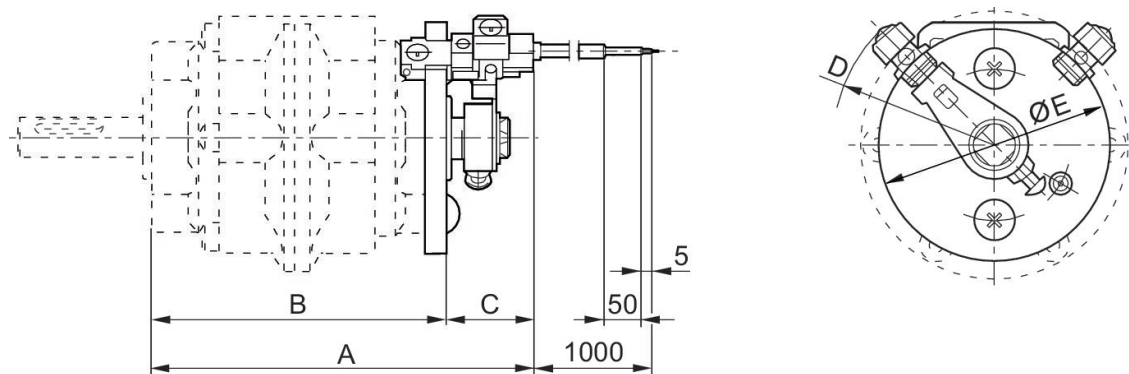
Dimensiones en mm



Fijación de sensor



Cilindro-Ø mín. [mm]	Cilindro-Ø máx. [mm]	Material	N° de material
2.5	10	Aluminio	3224160000
2.5	10	Aluminio	3224170000
2.5	10	Aluminio	3224180000

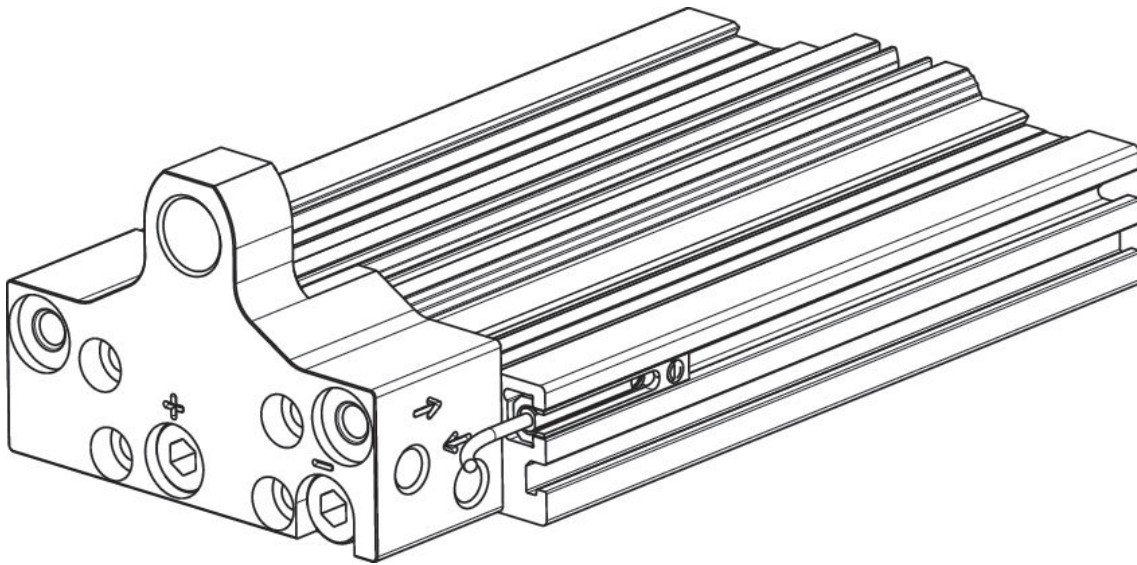


N° de material	Ø cilindro	Para serie	A	B	C	D	E
3224160000	2.5 - 10 mm	RAK - 6S, RAK - 6D	115	87.2	25.5	R47	69
3224170000	2.5 - 10 mm	RAK - 7S, RAK - 7D	131.7	104.2	27.5	R61	97
3224180000	2.5 - 10 mm	RAK - 8S, RAK - 8D	161.2	126.2	35	R69	113

Fijación de sensor, Serie ST4



Material	N° de material
Aluminio	R402004226
Aluminio	R402004227





# Efficient pneumatic solutions, our program: cylinders and drives, valves and valve systems, air supply management



Visit us: [Emerson.com/Aventics](https://www.emerson.com/aventics)

Your local contact: [Emerson.com/contactus](https://www.emerson.com/contactus)



[Emerson.com](https://www.emerson.com)



[Facebook.com/EmersonAutomationSolutions](https://www.facebook.com/EmersonAutomationSolutions)



[LinkedIn.com/company/Emerson-Automation-Solutions](https://www.linkedin.com/company/Emerson-Automation-Solutions)



[Twitter.com/EMR\\_Automation](https://twitter.com/EMR_Automation)

An example configuration is depicted on the title page. The delivered product may thus vary from that in the illustration. Subject to change. This Document, as well as the data, specifications and other information set forth in it, are the exclusive property of AVENTICS GmbH. It may not be reproduced or given to third parties without its consent. Only use the AVENTICS products shown in industrial applications. Read the product documentation completely and carefully before using the product. Observe the applicable regulations and laws of the respective country. When integrating the product into applications, note the system manufacturer's specifications for safe use of the product. The data specified only serve to describe the product. No statements concerning a certain condition or suitability for a certain application can be derived from our information. The information given does not release the user from the obligation of own judgment and verification. It must be remembered that the products are subject to a natural process of wear and aging.

The Emerson logo is a trademark and service mark of Emerson Electric Co. Brand logotype are registered trademarks of one of the Emerson family of companies. All other marks are the property of their respective owners. © 2019 Emerson Electric Co. All rights reserved.



**CONSIDER IT SOLVED™**