

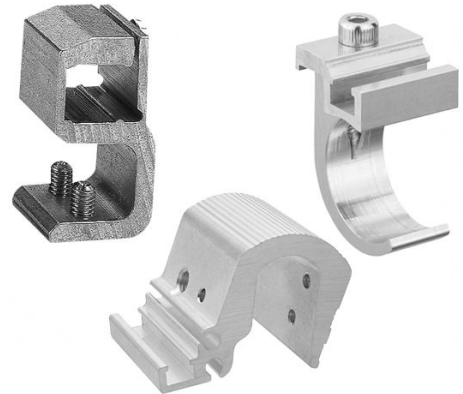
Sensorbefestigungen



Sensorbefestigung, Serie CB1

Die AVENTICS Sensorbefestigungen sind speziell für die Montage von AVENTICS Sensoren an verschiedenen Zylindern konzipiert.

- Anbau von Sensoren an unterschiedliche Zylinderbaureihen

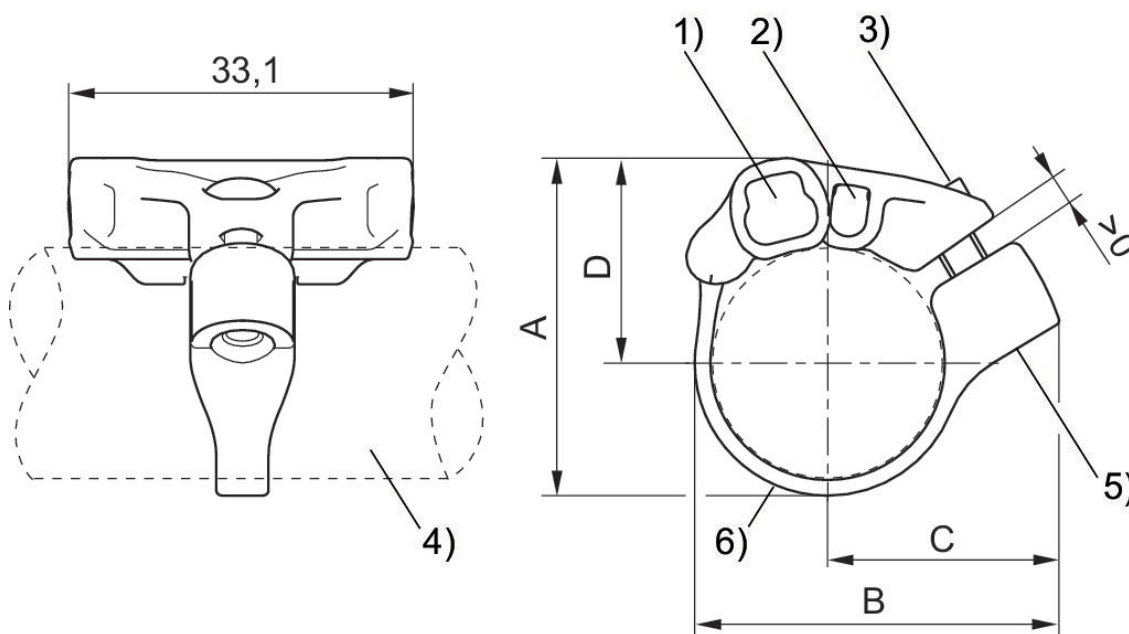


Sensorbefestigung, Serie CB1

ST4
ST6



Zylinder-Ø min. [mm]	Werkstoff	Materialnummer
16	Polyamid, Nichtrostender Stahl	R412021791
20	Polyamid, Nichtrostender Stahl	R412021792
25	Polyamid, Nichtrostender Stahl	R412021793



1) Sensornut für ST6 2) Sensornut für ST4 3) Befestigungsschraube (aus nichtrostendem Stahl) 4) Zylinderprofil 5) Gewindeeinsatz (aus nichtrostendem Stahl) 6) Spannband

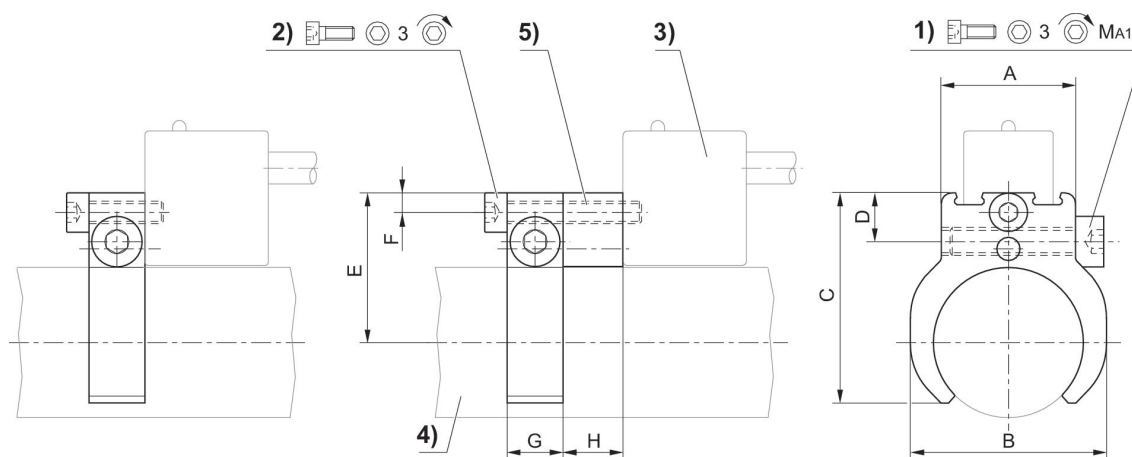
Materialnummer	A	B	C	D
R412021791	27.7	32.5	22.1	17.3
R412021792	32.4	35	22.4	19.7
R412021793	37.4	39.5	24.3	22.2

Sensorbefestigung, Serie CB1

SN1
SN2



Zylinder-Ø min. [mm]	Zylinder-Ø max. [mm]	Werkstoff	Materialnummer
10	10	Aluminium	1827020065
12	12	Aluminium	1827020066
16	16	Aluminium	1827020067
20	20	Aluminium	1827020068
25	25	Aluminium	1827020069

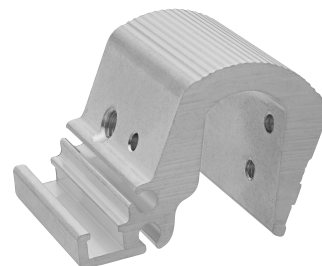


1) Klemmschraube 2) Befestigungsschraube für Sensor 3) Sensor 4) Zylinderprofil 5) Zwischenstück (bei Bedarf)

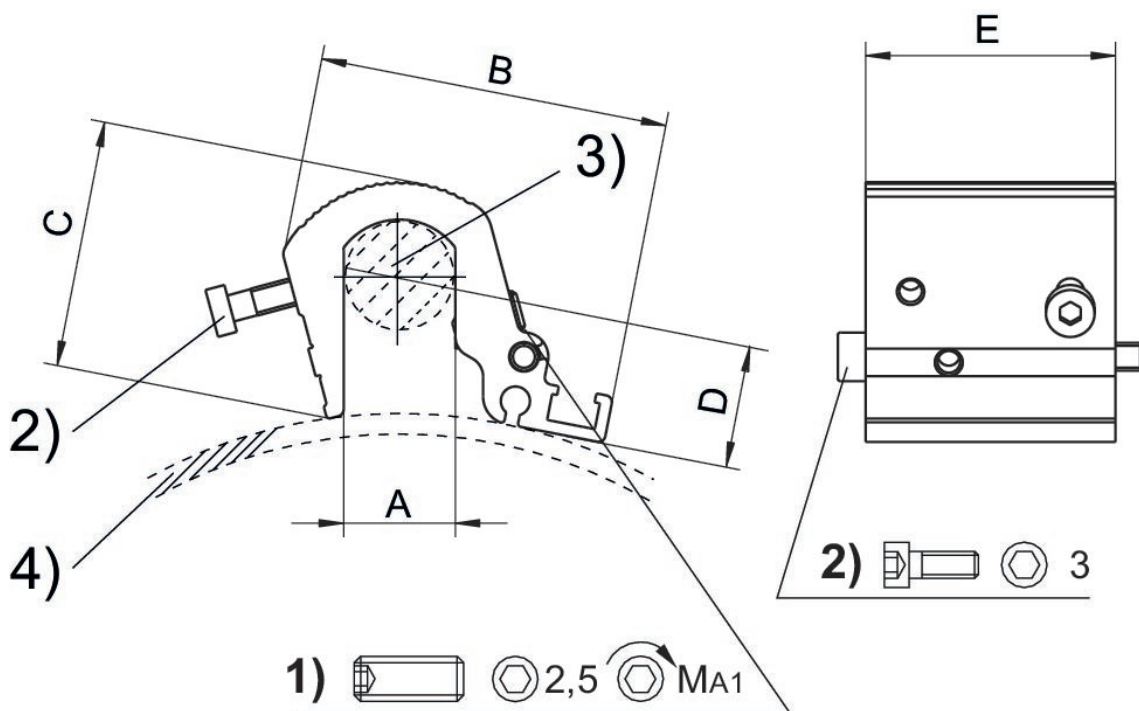
Zylinder-Ø mm	Materialnummer	A	B	C	D	E	F	G	H	1)
10	1827020065	16	16	23.5	8.2	18.7	3.5	10	10.7	M4x14
12	1827020066	16	20	25.5	8.2	19.9	3.5	10	10.7	M4x14
16	1827020067	20	24	29.7	8.7	21.9	3.5	10	10.7	M4x25
20	1827020068	20	28	33	8.7	24.1	3.5	10	10.7	M4x25
25	1827020069	24	35	37.5	8.7	26.6	3.5	10	10.7	M4x25

Zylinder-Ø mm	MA1 [Nm]
10	1 +0,3
12	1 +0,3
16	1 +0,3
20	1 +0,3
25	1 +0,3

Sensorbefestigung, Serie CB1



Zylinder-Ø min. [mm]	Zylinder-Ø max. [mm]	für Sensor	Werkstoff	Materialnummer
160	200	ST6, SN2, SN6, SN1, SM6	Aluminium	R412017979
250	320	ST6, SN2, SN6, SN1, SM6	Aluminium	R412017980



1) Klemmgewindestift 2) Befestigungsschrauben für Sensor 3) Zuganker 4) Zylinderprofil

Zylinder-Ø	Materialnummer	A	B	C	D	E	MA1 [Nm]
160 - 200 mm	R412017979	16	51	36	6.8	36	2
250 - 320 mm	R412017980	24	56	44.5	6.8	36	2

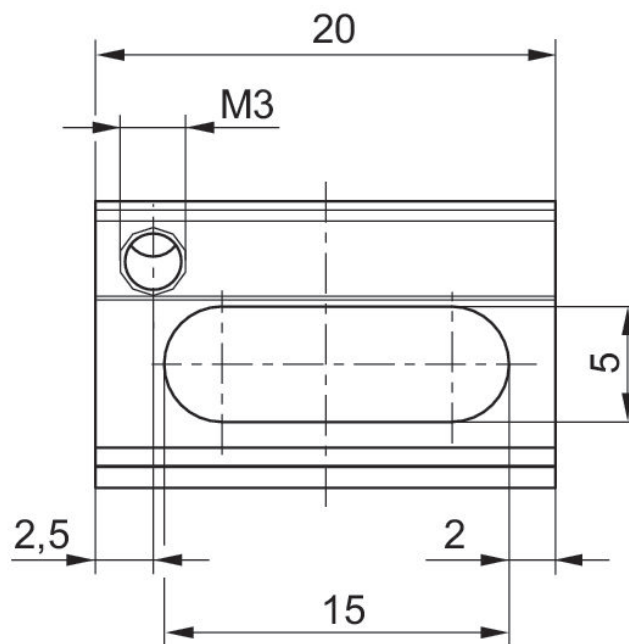
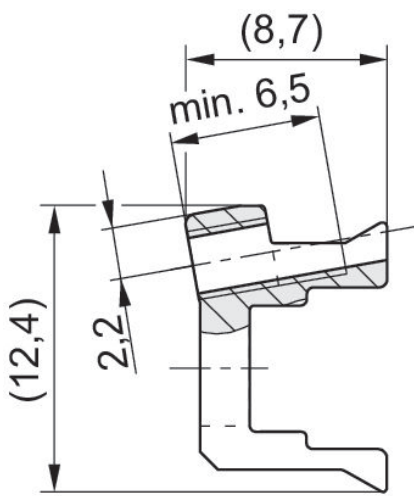
Lieferumfang: inkl. Befestigungsschrauben

Sensorbefestigung, Serie CB1

ST6



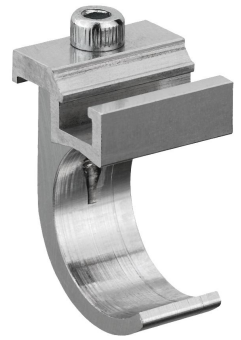
Werkstoff	Materialnummer
Aluminium	R422100250



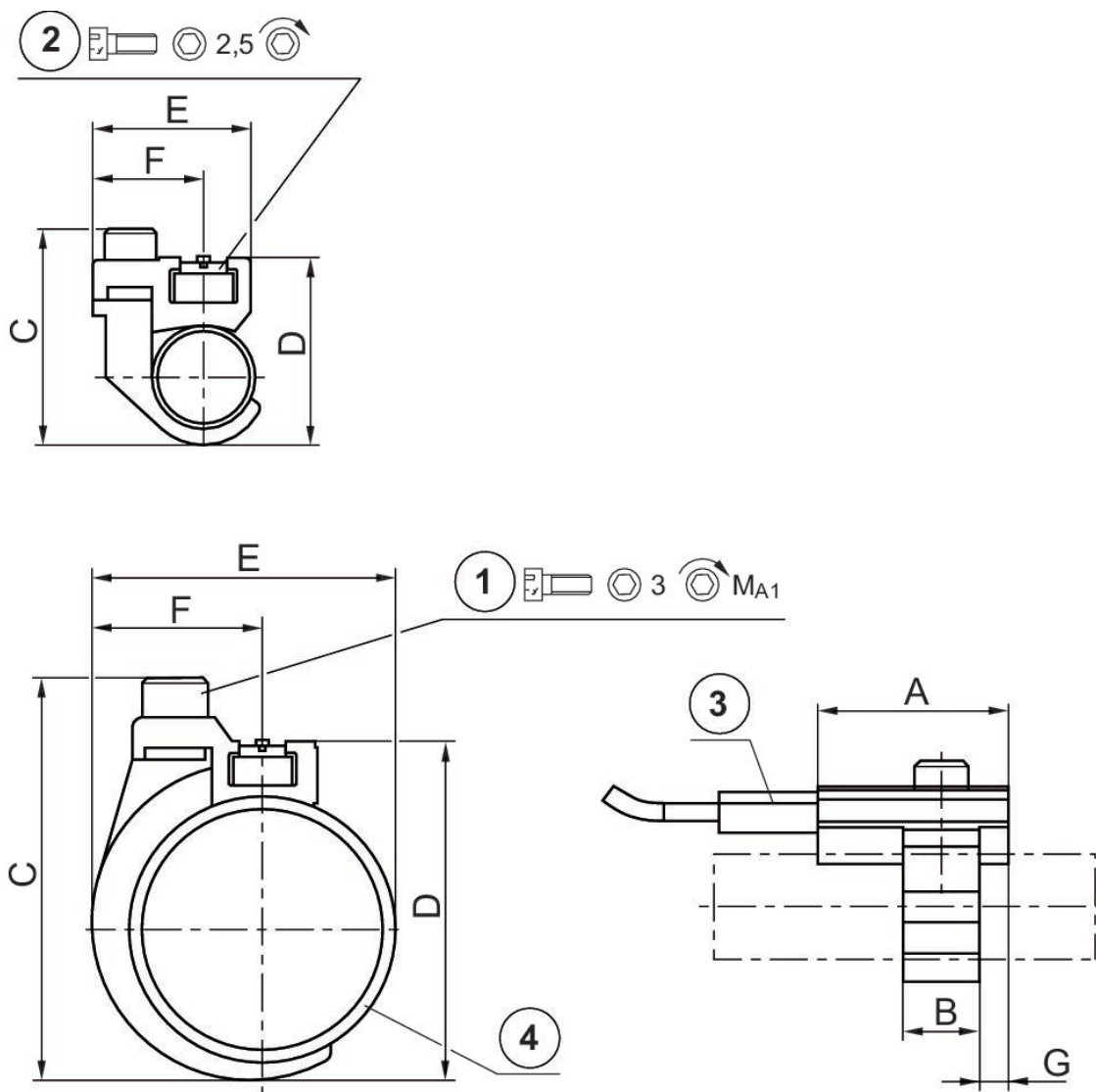
Lieferumfang: inkl. Gewindestift

Sensorbefestigung, Serie CB1

ST6
SM6



Zylinder-Ø min. [mm]	Werkstoff	Materialnummer
10	Aluminium	1827020296
12	Aluminium	1827020297
16	Aluminium	1827020298
20	Aluminium	1827020299
25	Aluminium	1827020300

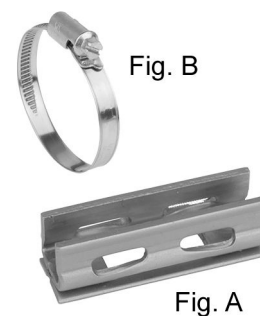


1) Befestigungsschraube 2) Befestigungsschraube für Sensor 3) Sensor 4) Zylinderrohr

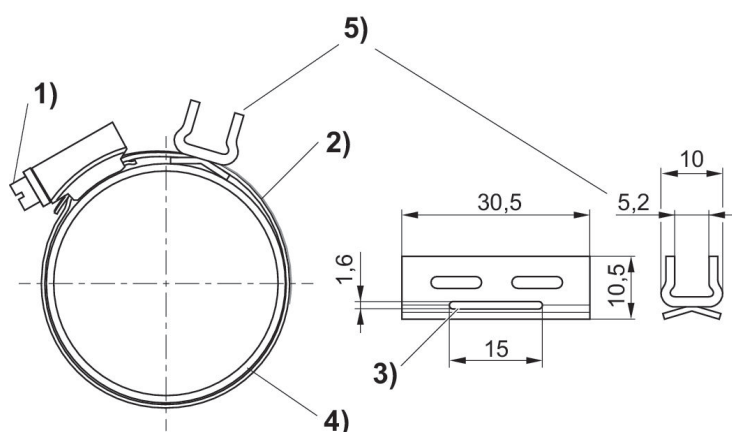
Materialnummer	Zylinder-Ø	A	B	C	D	E	F	G	Befestigungsschraube	MA1 [Nm]
1827020296	10 mm	20	8	24	19	17.5	11.8	3	M3x8	1 +0,2
1827020297	12 mm	20	8	26	22	19	11.8	3	M3x8	1 +0,2
1827020298	16 mm	20	12	34	30	23	13.8	4	M4x10	2 +0,3
1827020299	20 mm	20	12	38	32	26	13.8	4	M4x10	2 +0,3
1827020300	25 mm	20	12	43	37	31	13.8	4	M4x10	2 +0,3

Sensorbefestigung, Serie CB1

ST6



Zylinder-Ø min. [mm]	Zylinder-Ø max. [mm]	Werkstoff	Materialnummer
25	32	Nichtrostender Stahl	R412024050
40	40	Nichtrostender Stahl	R412024051
50	50	Nichtrostender Stahl	R412024052
63	63	Nichtrostender Stahl	R412024053
25	63	Nichtrostender Stahl	R412024054



1) Befestigungsschraube 2) Spannband 3) Durchlass für Spannband 4) Zylinderrohr 5) Sensorhalterung

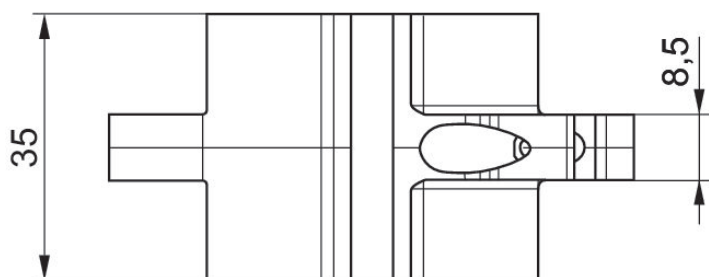
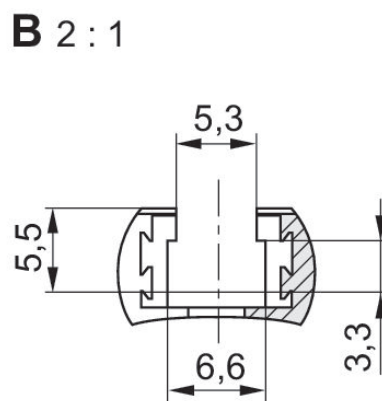
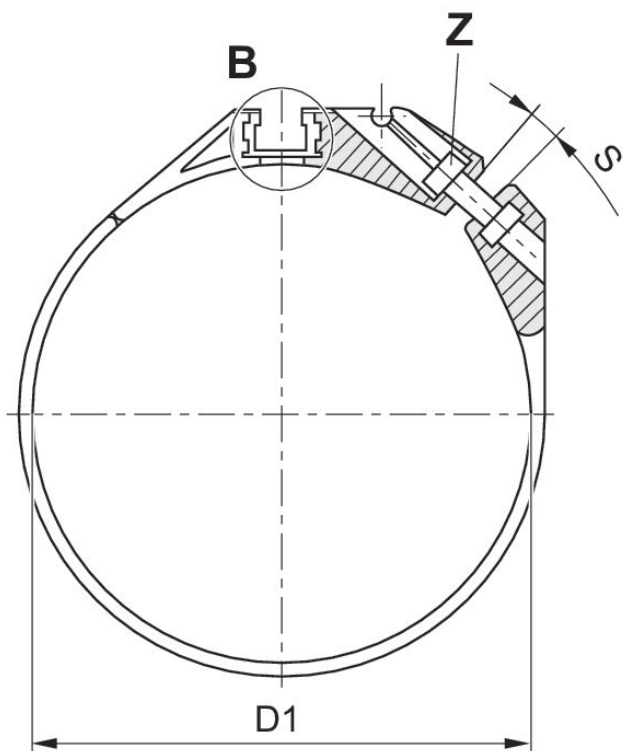
Materialnummer	Zylinderrohr-Ø	Für Serie	Abb.
R412024050	25 - 32 mm	ST6	Fig. B
R412024051	40 mm	ST6	Fig. B
R412024052	50 mm	ST6	Fig. B
R412024053	63 mm	ST6	Fig. B
R412024054	25 - 63 mm	ST6	Fig. A

Sensorbefestigung, Serie CB1

ST6



Zylinder-Ø min. [mm]	Zylinder-Ø max. [mm]	Werkstoff	Materialnummer
32	32	Polyoxymethylen, Aluminium	R412025665
40	40	Polyoxymethylen, Aluminium	R412025666
50	50	Polyoxymethylen, Aluminium	R412025667
63	63	Polyoxymethylen, Aluminium	R412025668

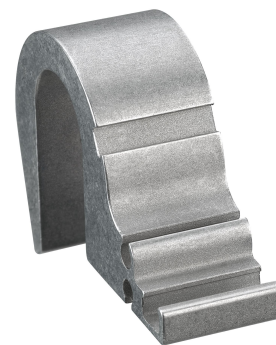


Material-nummer	D1	S	Z
R412025665	34	35	ISO 4762 - M3 x 10 A2
R412025666	42	43	ISO 4762 - M3 x 12 A2
R412025667	52,9	54	ISO 4762 - M3 x 12 A2
R412025668	65	66	ISO 4762 - M3 x 12 A2

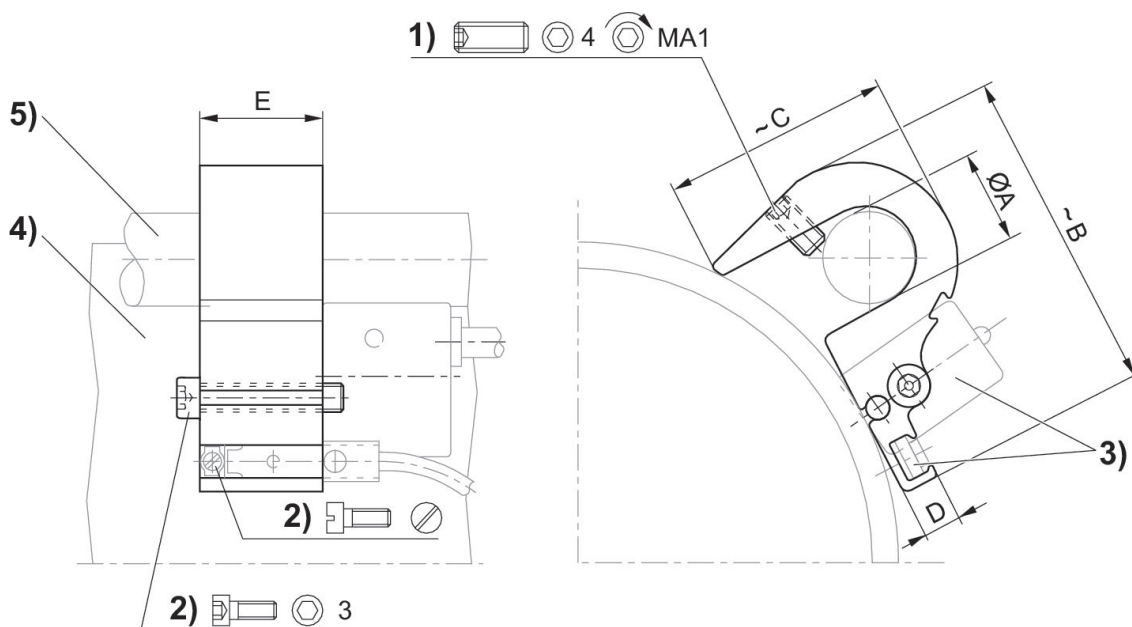
S = empfohlene max. Spreizungsweite [mm]

Sensorbefestigung, Serie CB1

ST6
SM6
SN1
SN2



Zylinder-Ø min. [mm]	Zylinder-Ø max. [mm]	Werkstoff	Materialnummer
125	125	Aluminium	1827020292



1) Klemmgewindestift 2) Befestigungsschraube für Sensor 3) Sensor 4) Zylinderprofil 5) Zuganker

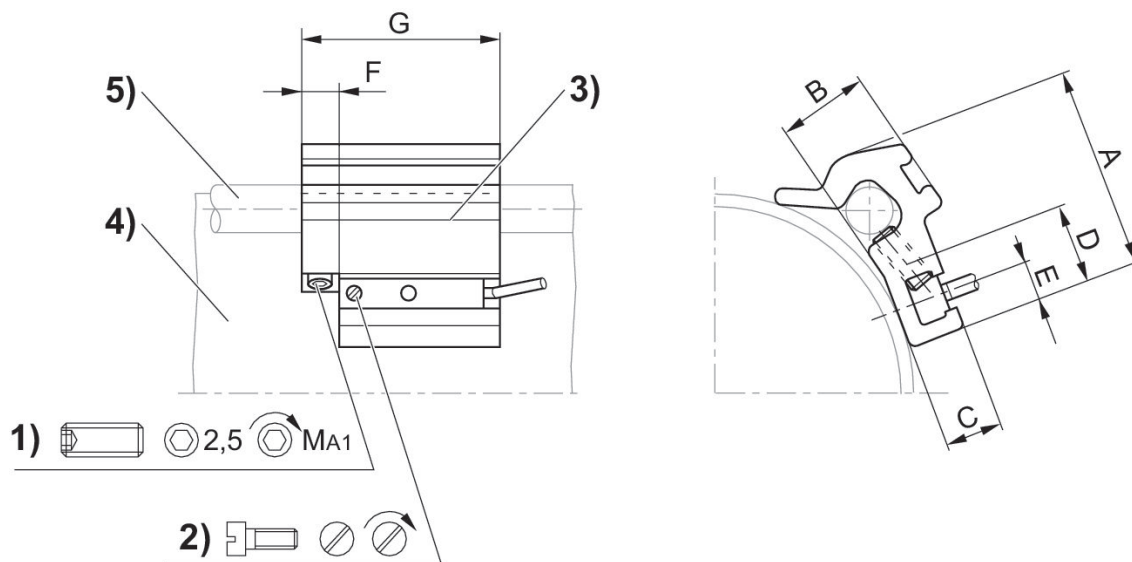
Materialnummer	Zylinder-Ø	Ø A	B	C	D	E	Klemmgewindestift	MA1 [Nm]
1827020292	125 mm	12	45	29	6.5	21	M5x10	2

Sensorbefestigung, Serie CB1

ST6
SM6



Zylinder-Ø min. [mm]	Zylinder-Ø max. [mm]	Werkstoff	Materialnummer
32	40	Aluminium	1827020282
50	63	Aluminium	1827020283
80	100	Aluminium	1827020284



1) Klemmgewindestift 2) Befestigungsschraube für Sensor 3) Sensor 4) Zylinderprofil 5) Zuganker

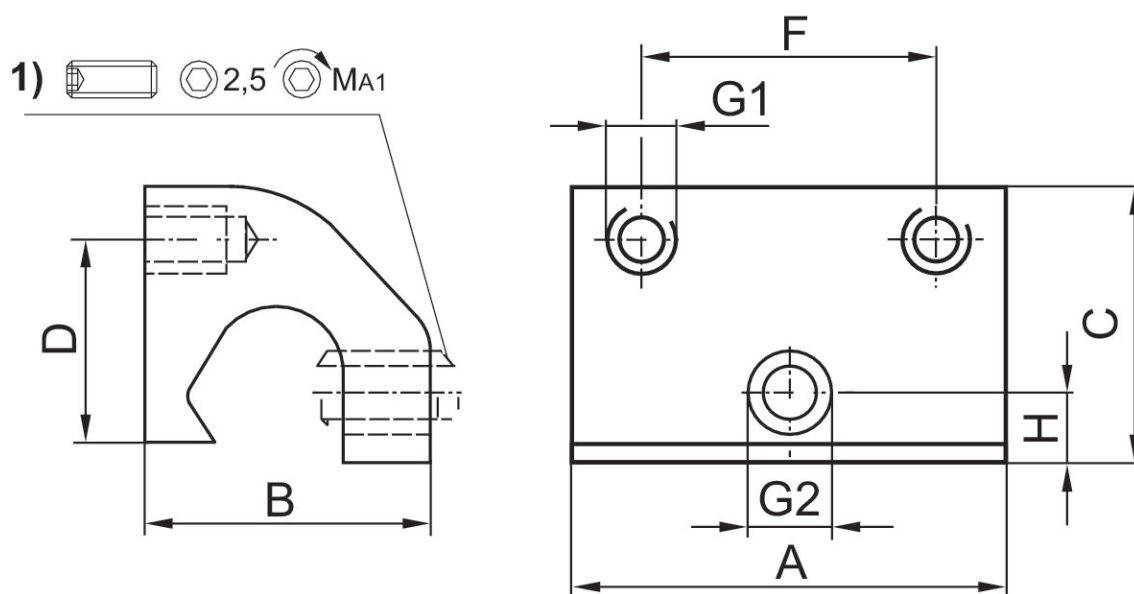
Materialnummer	Zylinder-Ø	A	B	C	D	E	F	G	Klemmgewindestift	MA1 [Nm]
1827020282	32 - 40 mm	26	10	7	14	5	8	40	M5x8	2 ±0,2
1827020283	50 - 63 mm	32.5	15.5	7	14	5	8	40	M5x10	2 ±0,2
1827020284	80 - 100 mm	43	17	6.9	14	5	8	40	M5x16	2 ±0,2

Sensorbefestigung, Serie CB1

SN6



Zylinder-Ø min. [mm]	Zylinder-Ø max. [mm]	Werkstoff	Materialnummer
32	63	Aluminium	3220613562
80	125	Aluminium	3220643562



1) Klemmgewindestift

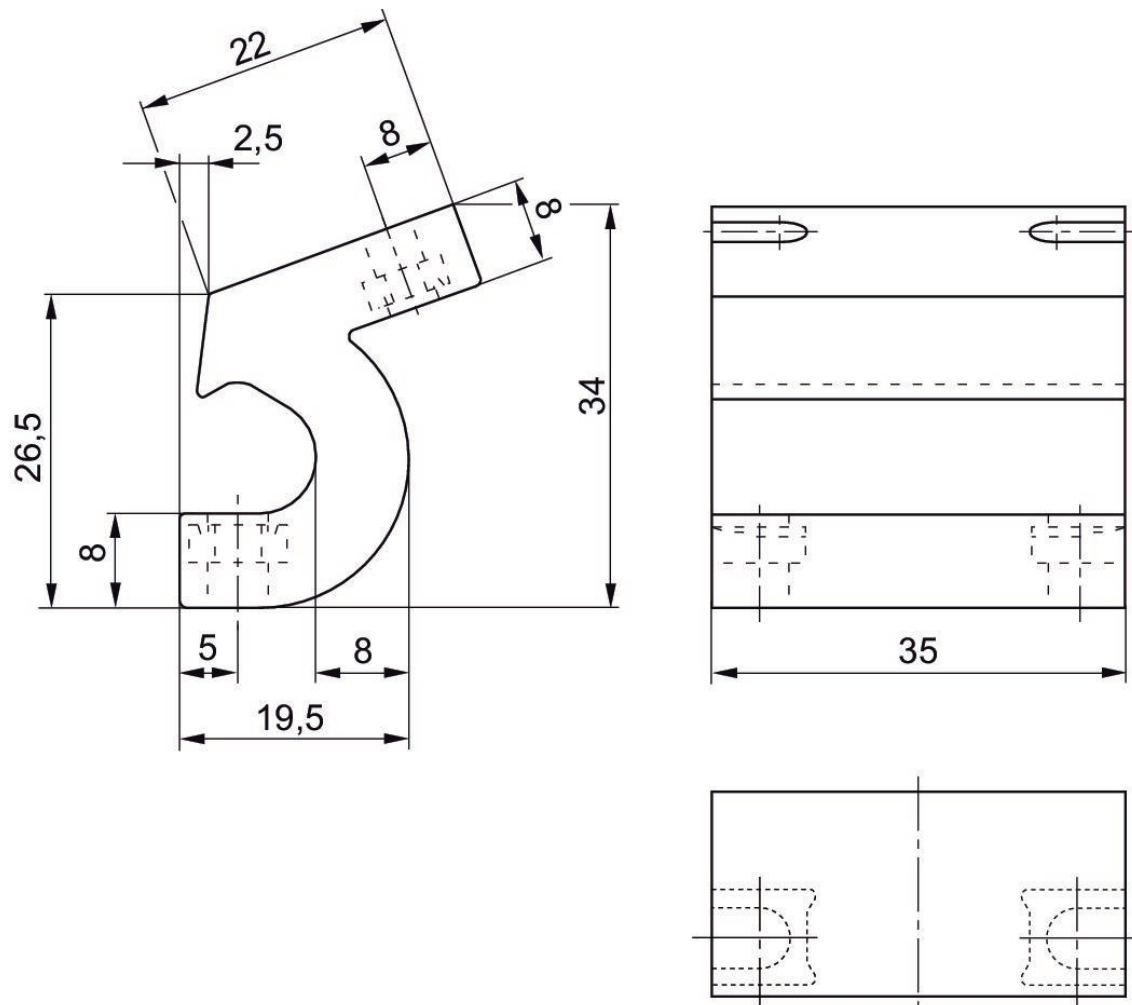
Materialnummer	Zylinder-Ø	A	B	C	D	F	G1	G2	H	MA1 [Nm]
3220643562	80 - 125 mm	35	22	21	12	23	M4	M5	5	1,8 +0,4
3220613562	32 - 63 mm	35	22	21	16	23	M4	M5	5	1,8 +0,4

Sensorbefestigung, Serie CB1

SN6



Zylinder-Ø min. [mm]	Zylinder-Ø max. [mm]	Werkstoff	Materialnummer
32	63	Polyamid	5230033502

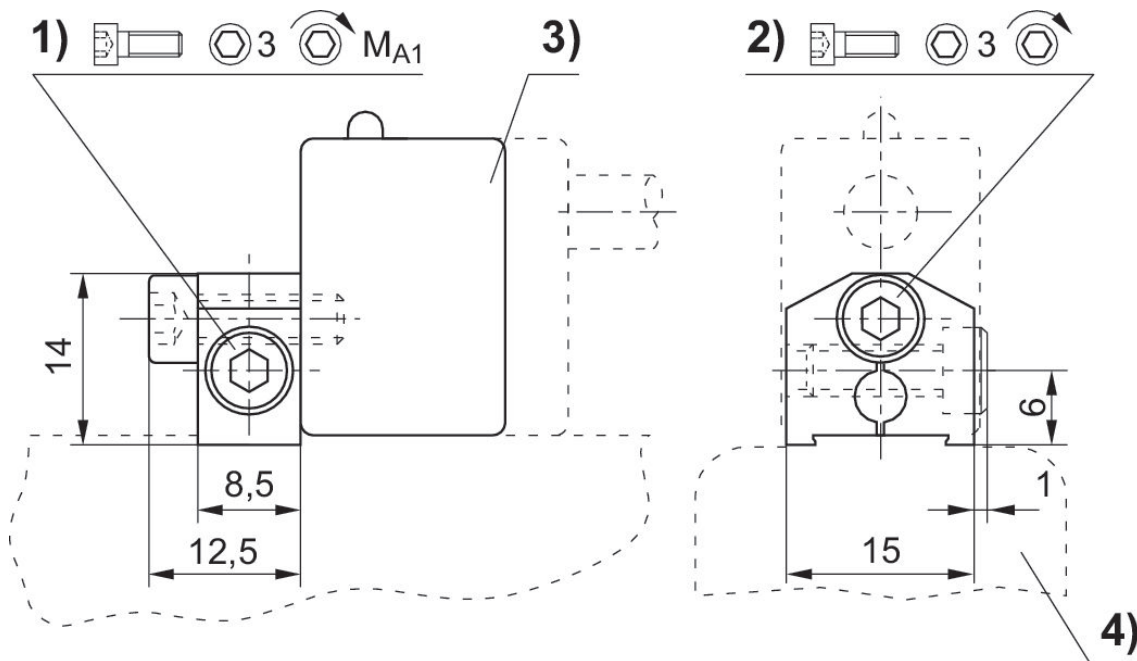


Sensorbefestigung, Serie CB1

SN1
SN2



Werkstoff	Materialnummer
Aluminium	1827020084



1) Klemmschraube 2) Befestigungsschraube für Sensor 3) Sensor 4) Zylinderprofil

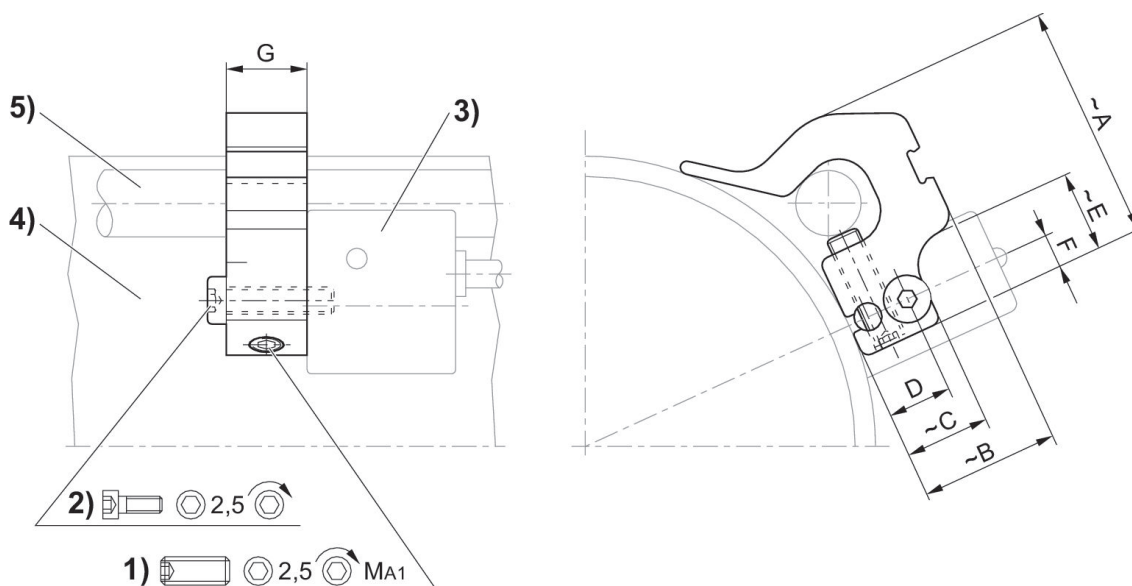
Materialnummer	Klemmschraube	MA1 [Nm]
1827020084	M4x12	2

Sensorbefestigung, Serie CB1

SN1
SN2



Zylinder-Ø min. [mm]	Zylinder-Ø max. [mm]	Werkstoff	Materialnummer
32	40	Aluminium	1827020081
50	63	Aluminium	1827020082
80	100	Aluminium	1827020083



1) Klemmgewindestift 2) Befestigungsschraube für Sensor 3) Sensor 4) Zylinderprofil 5) Zuganker

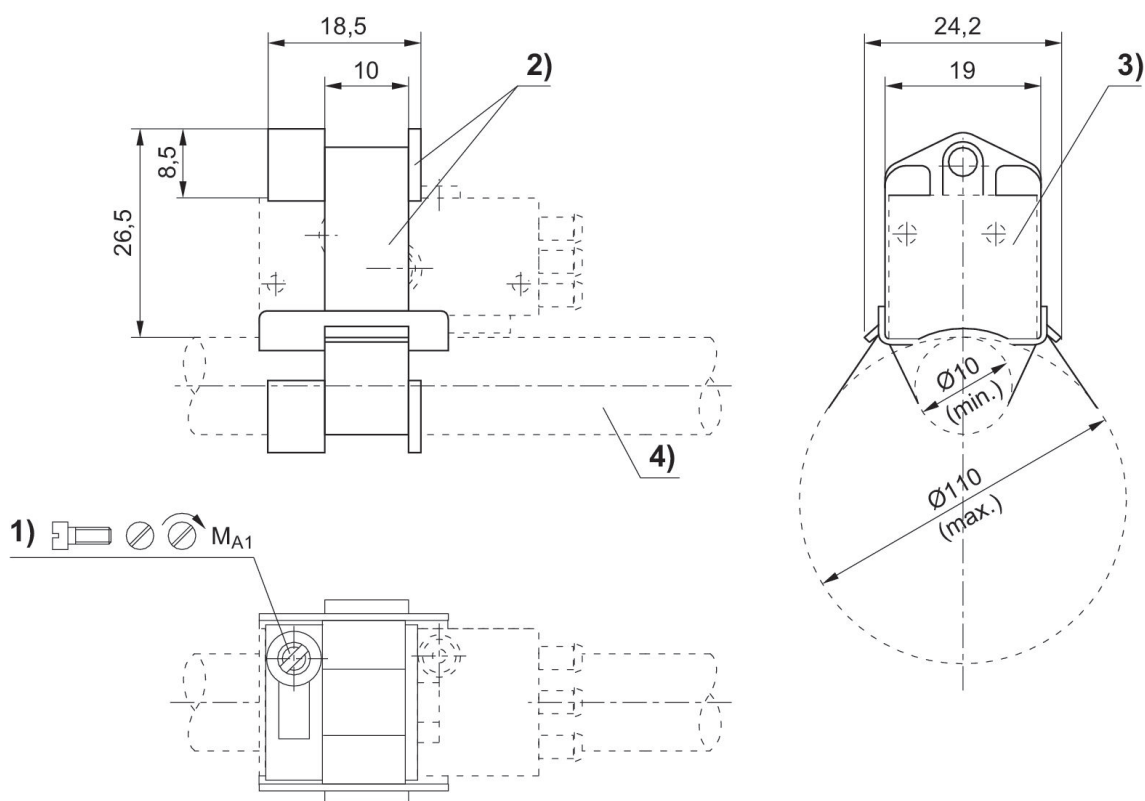
Materialnummer	Zylinder-Ø mm	A	B	C	D	E	F	G	Klemmgewindestift	MA1 [Nm]
1827020081	32 - 40 mm	25.3	12.5	12.5	9.5	-	5	16	M5x16	1 +0,3
1827020082	50 - 63 mm	28.7	15.6	12.5	9.5	12	5	12	M5x16	1 +0,3
1827020083	80 - 100 mm	33.8	23	12.5	9.5	12	5	12	M5x16	1 +0,3

Sensorbefestigung, Serie CB1

SP1



Zylinder-Ø min. [mm]	Zylinder-Ø max. [mm]	Werkstoff	Materialnummer
10	100	Aluminium	1821205002



1) Klemmschraube 2) Spannband mit Halter 3) Sensor 4) Zylinderrohr

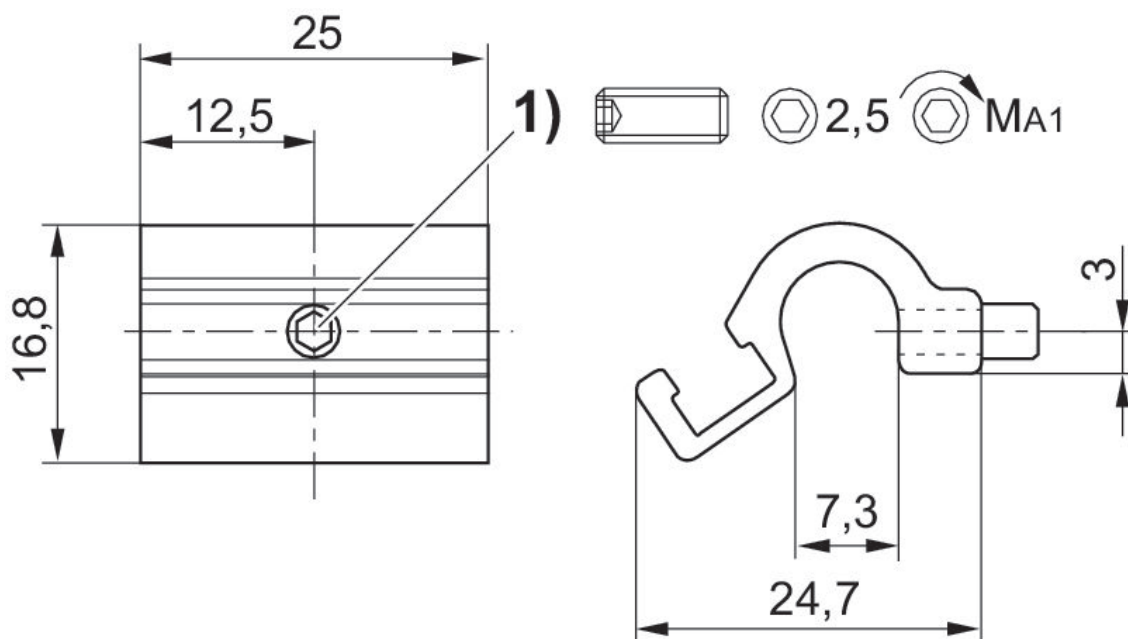
Materialnummer	Zylinder-Ø	MA1 [Nm]
1821205002	10 - 100 mm	<0,5
tablefooter		

Sensorbefestigung, Serie CB1

ST6
SM6



Zylinder-Ø max. [mm]	Werkstoff	Materialnummer
25	Aluminium	R412022357

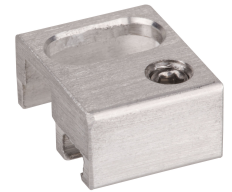


1) Befestigungsschraube

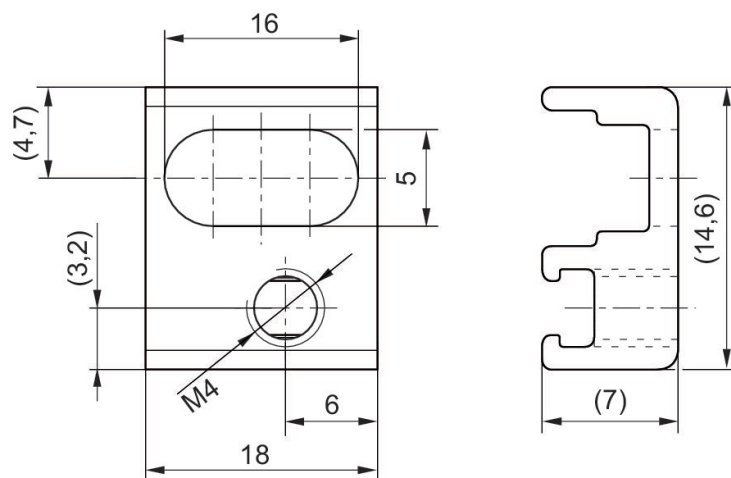
Materialnummer	Zylinder-Ø max.	MA1 [Nm]
R412022357	25 mm	1 + 0,3

Sensorbefestigung, Serie CB1

ST6



Werkstoff	Materialnummer
Aluminium	R412025944

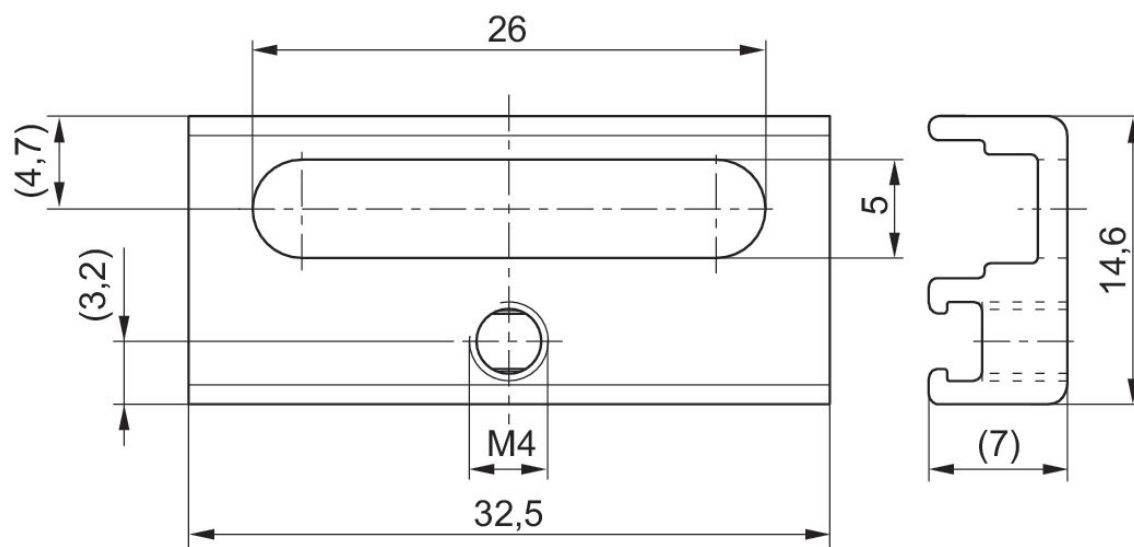


Sensorbefestigung, Serie CB1

ST6



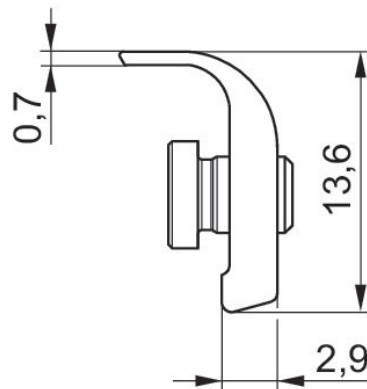
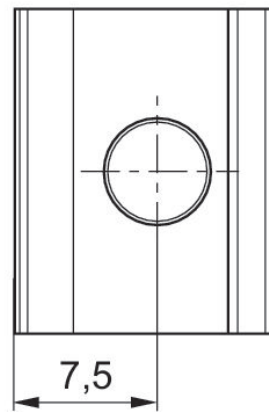
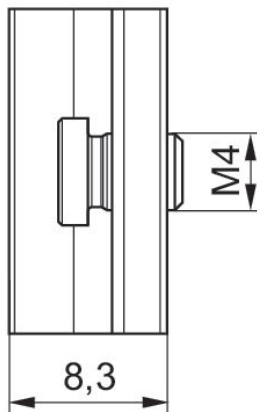
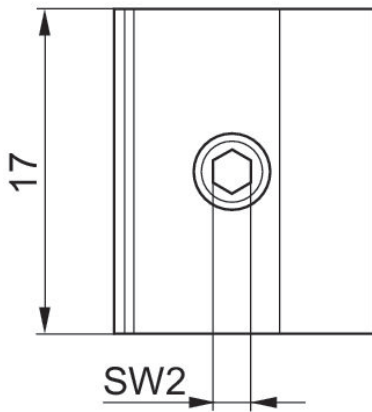
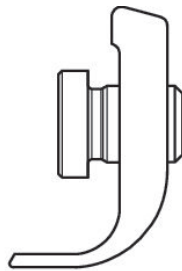
Werkstoff	Materialnummer
Aluminium	R402000040



Sensorbefestigung



Werkstoff	Materialnummer
Aluminium	R412010906

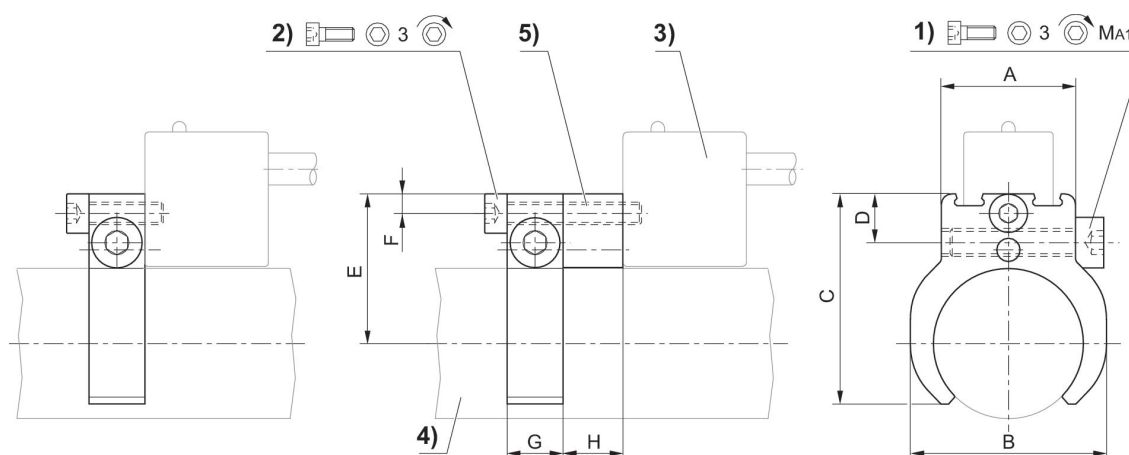


Sensorbefestigung

SN2



Zylinder-Ø min. [mm]	Zylinder-Ø max. [mm]	Werkstoff	Materialnummer
32	32	Aluminium	1827020142
40	40	Aluminium	1827020143
50	50	Aluminium	1827020144
63	63	Aluminium	1827020266



1) Klemmschraube 2) Befestigungsschraube für Sensor 3) Sensor 4) Zylinderprofil 5) Zwischenstück (bei Bedarf)

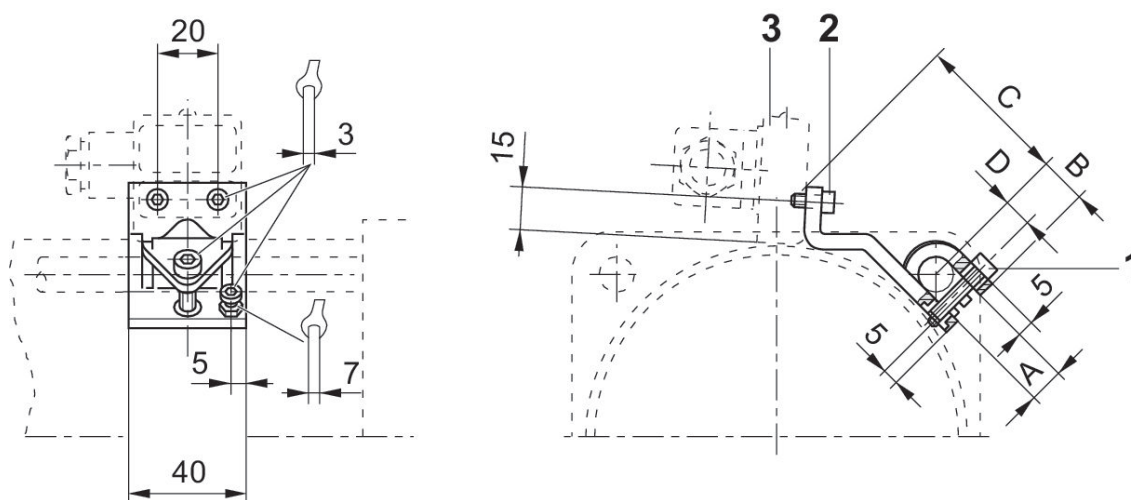
Zylinder-Ø mm	Materialnummer	A	B	C	D	E	F	G	H	1)
10	1827020065	16	16	23.5	8.2	18.7	3.5	10	10.7	M4x14
12	1827020066	16	20	25.5	8.2	19.9	3.5	10	10.7	M4x14
16	1827020067	20	24	29.7	8.7	21.9	3.5	10	10.7	M4x25
20	1827020068	20	28	33	8.7	24.1	3.5	10	10.7	M4x25
25	1827020069	24	35	37.5	8.7	26.6	3.5	10	10.7	M4x25

Zylinder-Ø mm	MA1 [Nm]
10	1 +0,3
12	1 +0,3
16	1 +0,3
20	1 +0,3
25	1 +0,3

Sensorbefestigung, Serie CB1



Zylinder-Ø min. [mm]	Zylinder-Ø max. [mm]	Werkstoff	Materialnummer
125	125	Aluminium	1827020076
160	200	Aluminium	1827020077
250	250	Aluminium	1827020078



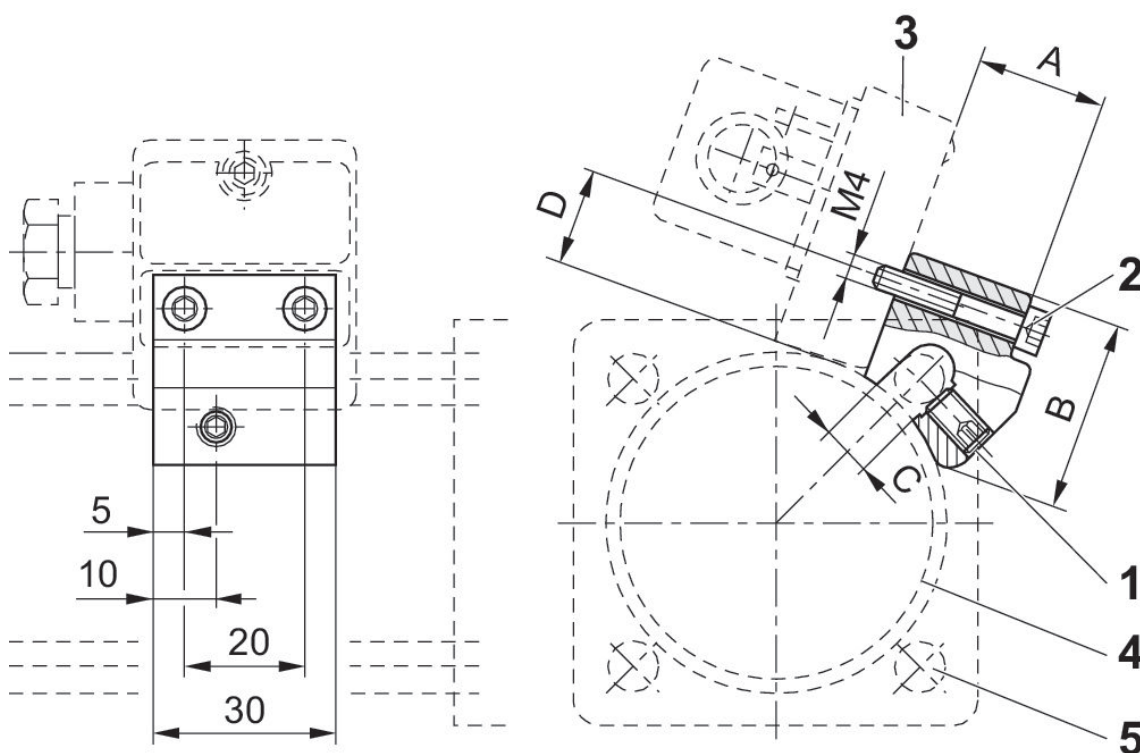
1) Befestigungsschraube 2) Befestigungsschraube für Sensor 3) Sensor

Materialnummer	A +0,5	B ±1	C ±2	D
1827020076	12	15	54	9
1827020077	16	17	53	11
1827020078	20	19	60	13

Sensorbefestigung, Serie CB1



Zylinder-Ø min. [mm]	Zylinder-Ø max. [mm]	Werkstoff	Materialnummer
32	40	Aluminium	1827020056
50	63	Aluminium	1827020057
80	100	Aluminium	1827020058



1) Klemmgewindestift 2) Befestigungsschraube für Sensor 3) Sensor 4) Zylinderprofil 5) Zuganker

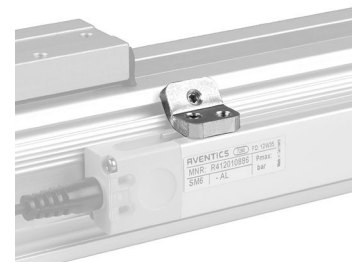
Materialnummer	A	B	C	D	SW
1827020056	19.5	30	6	15	3
1827020057	24.5	30	8	15	3
1827020058	29.5	31	10	15	3

Befestigungsblech



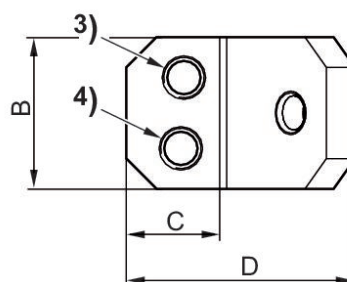
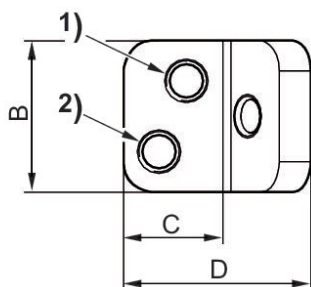
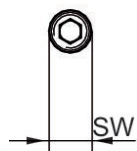
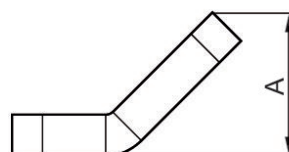
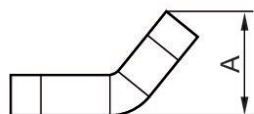
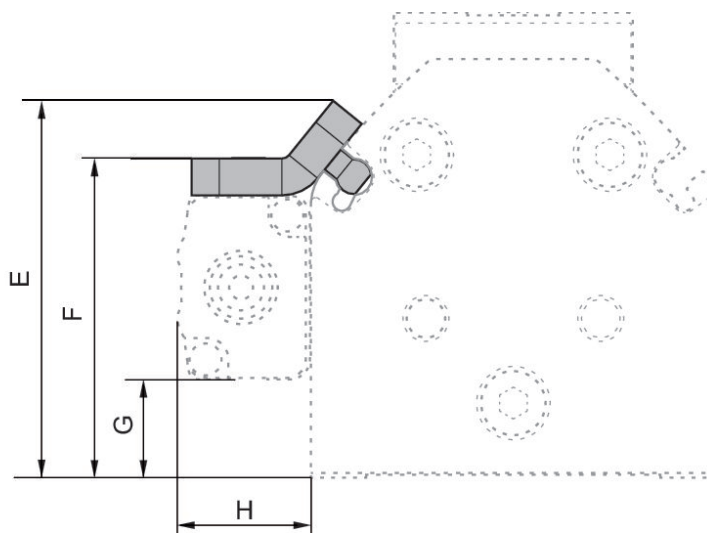
Werkstoff	Materialnummer
Aluminium	3224161000
Aluminium	3224171000
Aluminium	3224181000

Sensorbefestigung, Serie CB1



Werkstoff	Materialnummer
Aluminium	R412022298

Abmessungen



* Gewindestift (Messing)
2 Klemhaltersets für SM6-AL 109 - 469 mm 3 Klemhaltersets für SM6-AL 505 - 793 mm 4 Klemhaltersets für SM6-AL 829 - 1009 mm

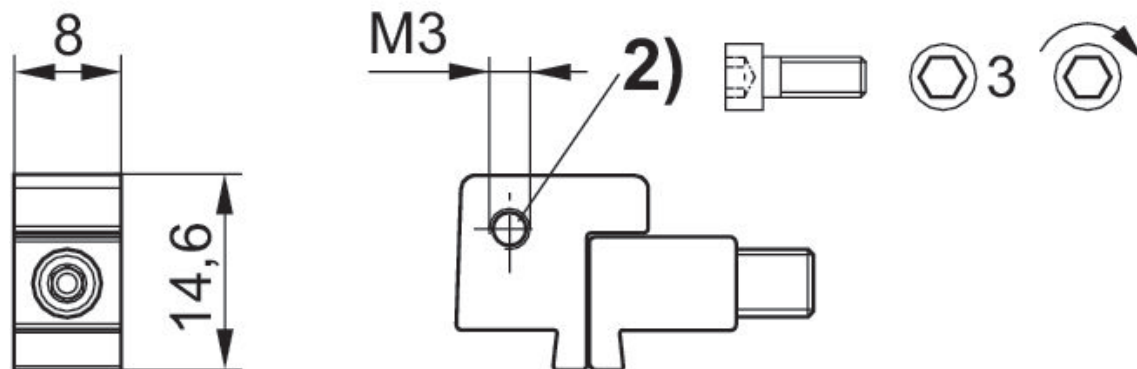
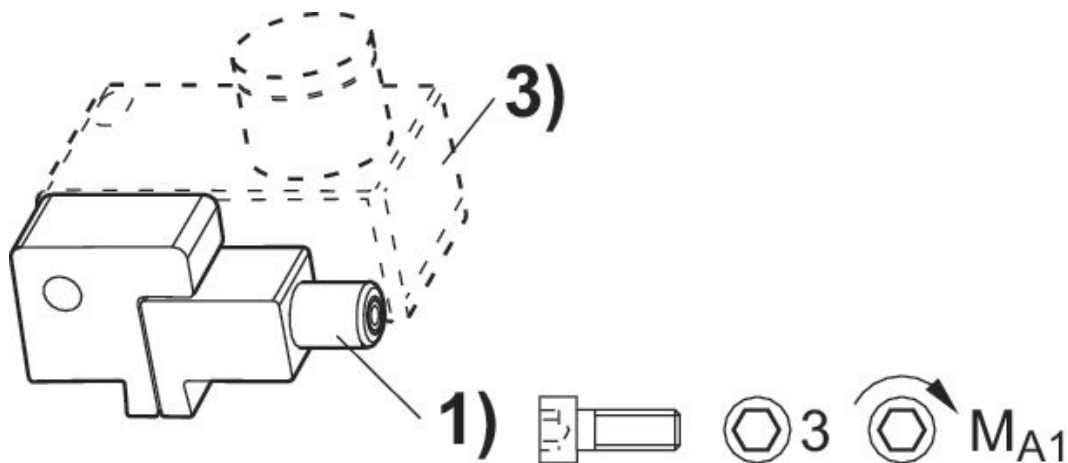
Kolben-Ø	Bem.	A	B	C	D	E	F	G	H	SW
25	1)	10.3	15	9.8	18.5	41	34.7	10.7	14.4	2
32	2)	10.3	15	9.8	18.5	46.7	40.4	16.4	14.4	2
40	3)	14.2	15	9.2	22.6	55	45.2	21.1	14.4	2
50	4)	14.2	15	9.2	22.6	60.6	50.5	26.5	14.4	2

Sensorbefestigung, Serie CB1

SN3



Werkstoff	Materialnummer
Aluminium	1827020386



1) Klemmschraube 2) Befestigungsschraube für Sensor 3) Sensor

Materialnummer	Klemmschraube	MA1 [Nm]
1827020386	M3x25	1,8 +0,4

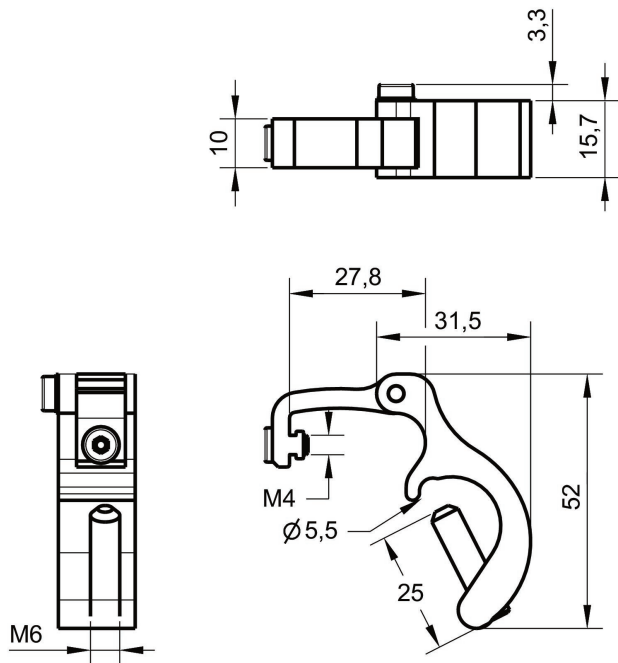
Sensorbefestigung SM6-AL

TaskMaster®



für Sensor	Werkstoff	Materialnummer
SM6-AL	Aluminium	R432038613

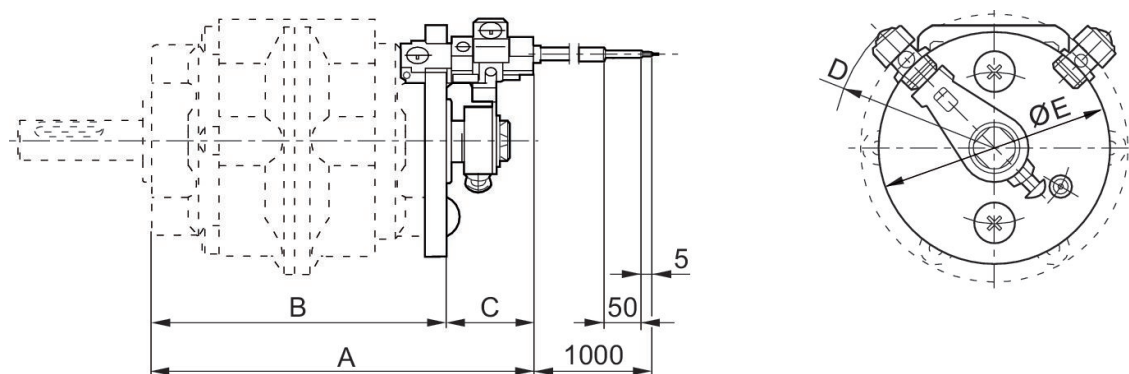
Abmessungen in mm



Sensorbefestigung



Zylinder-Ø min. [mm]	Zylinder-Ø max. [mm]	Werkstoff	Materialnummer
2.5	10	Aluminium	3224160000
2.5	10	Aluminium	3224170000
2.5	10	Aluminium	3224180000

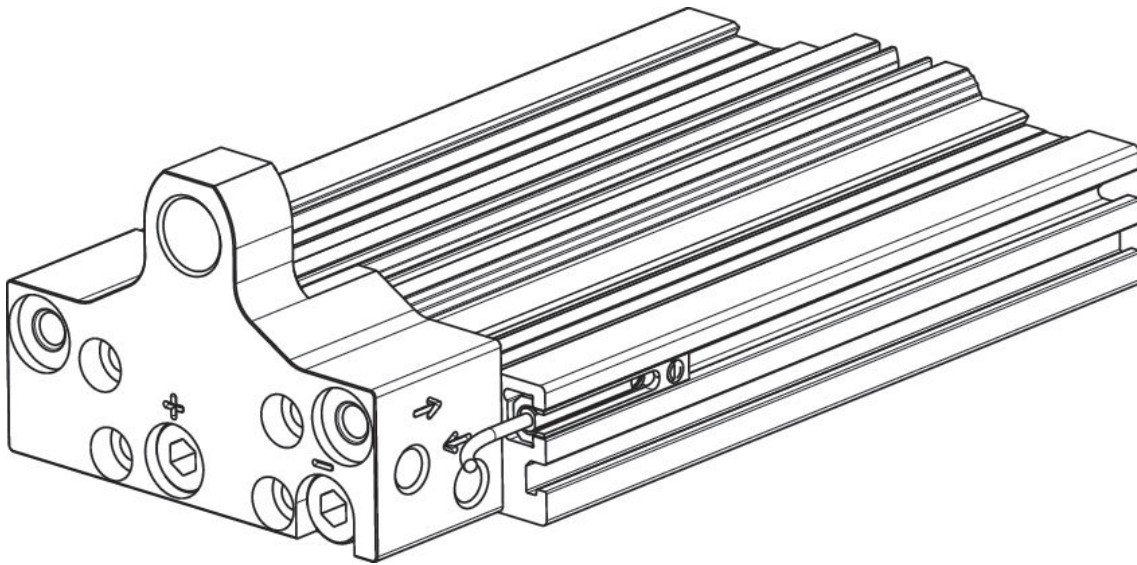


Materialnummer	Zylinder-Ø	Für Serie	A	B	C	D	E
3224160000	2.5 - 10 mm	RAK - 6S, RAK - 6D	115	87.2	25.5	R47	69
3224170000	2.5 - 10 mm	RAK - 7S, RAK - 7D	131.7	104.2	27.5	R61	97
3224180000	2.5 - 10 mm	RAK - 8S, RAK - 8D	161.2	126.2	35	R69	113

Sensorbefestigung, Serie ST4



Werkstoff	Materialnummer
Aluminium	R402004226
Aluminium	R402004227



Efficient pneumatic solutions, our program: cylinders and drives, valves and valve systems, air supply management



Visit us: [Emerson.com/Aventics](https://www.emerson.com/aventics)

Your local contact: [Emerson.com/contactus](https://www.emerson.com/contactus)



[Emerson.com](https://www.emerson.com)



[Facebook.com/EmersonAutomationSolutions](https://www.facebook.com/EmersonAutomationSolutions)



[LinkedIn.com/company/Emerson-Automation-Solutions](https://www.linkedin.com/company/Emerson-Automation-Solutions)



[Twitter.com/EMR_Automation](https://twitter.com/EMR_Automation)

An example configuration is depicted on the title page. The delivered product may thus vary from that in the illustration. Subject to change. This Document, as well as the data, specifications and other information set forth in it, are the exclusive property of AVENTICS GmbH. It may not be reproduced or given to third parties without its consent. Only use the AVENTICS products shown in industrial applications. Read the product documentation completely and carefully before using the product. Observe the applicable regulations and laws of the respective country. When integrating the product into applications, note the system manufacturer's specifications for safe use of the product. The data specified only serve to describe the product. No statements concerning a certain condition or suitability for a certain application can be derived from our information. The information given does not release the user from the obligation of own judgment and verification. It must be remembered that the products are subject to a natural process of wear and aging.

The Emerson logo is a trademark and service mark of Emerson Electric Co. Brand logotype are registered trademarks of one of the Emerson family of companies. All other marks are the property of their respective owners. © 2019 Emerson Electric Co. All rights reserved.



CONSIDER IT SOLVED™