

Sensors, Series SP1



AVENTICS™

**AVENTICS Series SP1
Pneumatic proximity sensors**



Series SP1

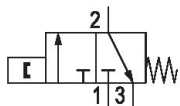
AVENTICS Series SP1 proximity pneumatic sensors can be mounted in any orientation. The active switching surface of the pneumatic proximity sensor is marked to assist with the setup and successful operation of the device. A positive switched output is identifiable via a pop-up indicator sited on top of the switch.

- Operating pressure 2 bar ... 6 bar
- Nominal flow 40 l/min



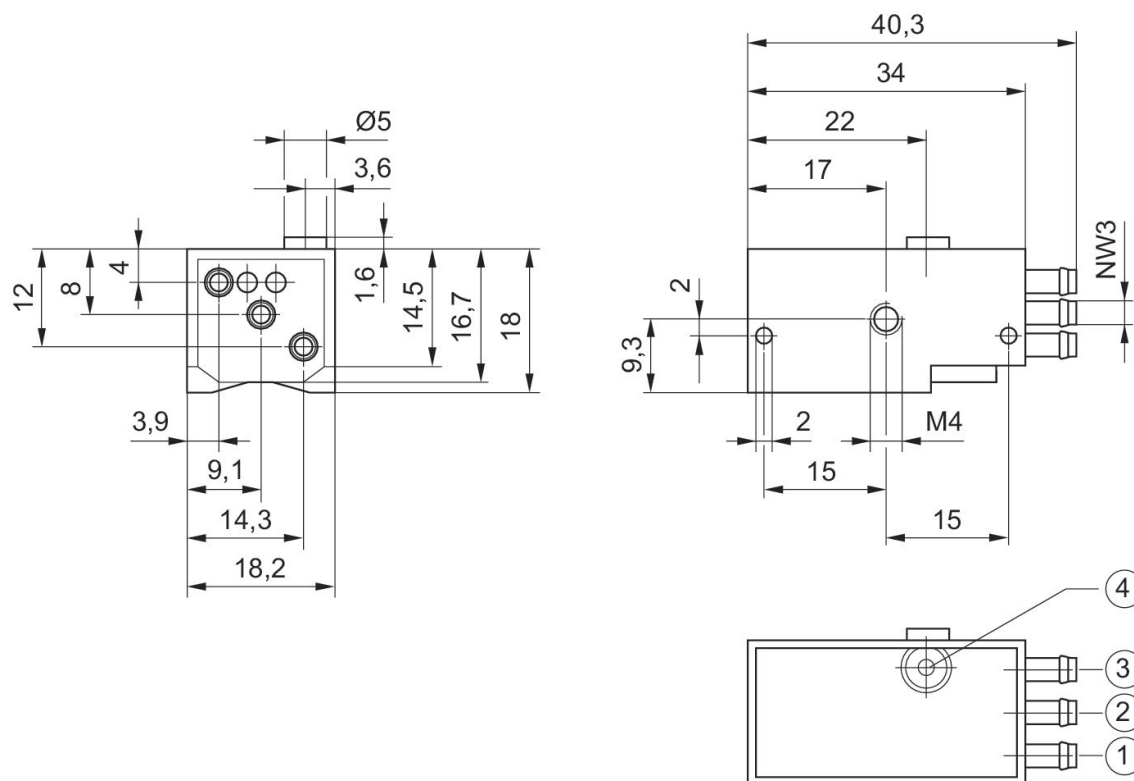
Pneumatic sensor, Series SP1

40 l/min



Switching time on [ms]	Switching time off [ms]	Switching point precision	Part No.
12	25	±0,2 mT	0820212201

Dimensions



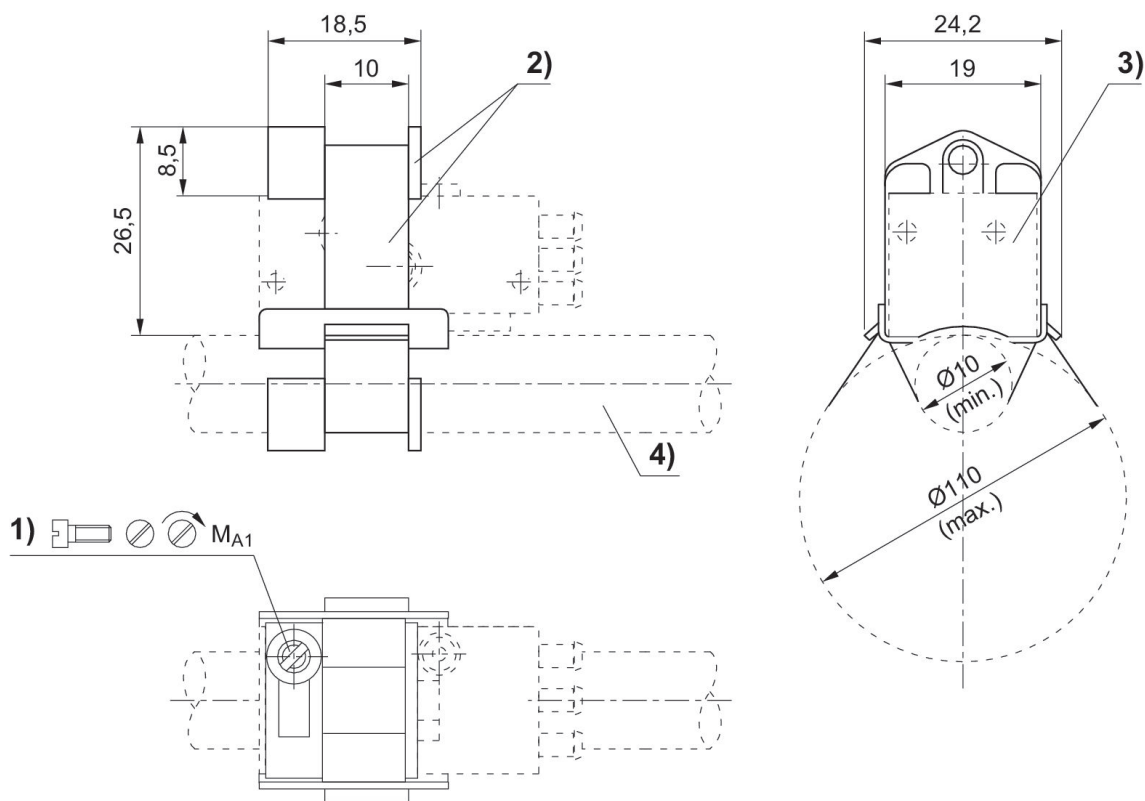
1) compressed air connection 2) output line 3) exhaust 4) visual indicator

Sensor mounting, Series CB1

SP1



Min. cylinder Ø [mm]	Max. cylinder Ø [mm]	Material	Part No.
10	100	Aluminum	1821205002



1) Clamping screw 2) Tightening strap with bracket 3) Sensor 4) Cylinder pipe

Part No.	Cylinders Ø	MA1 [Nm]
1821205002	10 - 100 mm	<0,5

Efficient pneumatic solutions, our program: cylinders and drives, valves and valve systems, air supply management



Visit us: [Emerson.com/Aventics](https://www.emerson.com/aventics)

Your local contact: [Emerson.com/contactus](https://www.emerson.com/contactus)



[Emerson.com](https://www.emerson.com)



[Facebook.com/EmersonAutomationSolutions](https://www.facebook.com/EmersonAutomationSolutions)



[LinkedIn.com/company/Emerson-Automation-Solutions](https://www.linkedin.com/company/Emerson-Automation-Solutions)



[Twitter.com/EMR_Automation](https://twitter.com/EMR_Automation)

An example configuration is depicted on the title page. The delivered product may thus vary from that in the illustration. Subject to change. This Document, as well as the data, specifications and other information set forth in it, are the exclusive property of AVENTICS GmbH. It may not be reproduced or given to third parties without its consent. Only use the AVENTICS products shown in industrial applications. Read the product documentation completely and carefully before using the product. Observe the applicable regulations and laws of the respective country. When integrating the product into applications, note the system manufacturer's specifications for safe use of the product. The data specified only serve to describe the product. No statements concerning a certain condition or suitability for a certain application can be derived from our information. The information given does not release the user from the obligation of own judgment and verification. It must be remembered that the products are subject to a natural process of wear and aging.

The Emerson logo is a trademark and service mark of Emerson Electric Co. Brand logotype are registered trademarks of one of the Emerson family of companies. All other marks are the property of their respective owners. © 2019 Emerson Electric Co. All rights reserved.



CONSIDER IT SOLVED™