

## Sensoren, Serie SP1



**AVENTICS™**

**AVENTICS Serie  
SP1 Pneumatische  
Näherungssensoren**

  
**EMERSON™**

## **Serie SP1**

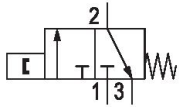
Pneumatische Naherungssensoren der Serie SP1 von AVENTICS konnen in jeder beliebigen Ausrichtung montiert werden. Die aktive Schalt-Oberflache des pneumatischen Naherungssensors ist markiert, um die Einrichtung und den erfolgreichen Betrieb des Gerats zu unterstutzen. Ein positiv geschalteter Ausgang ist uber eine Pop-up-Anzeige auf der Oberseite des Schalters erkennbar.

- Betriebsdruck 2 bar ... 6 bar
- Nenndurchfluss 40 l/min



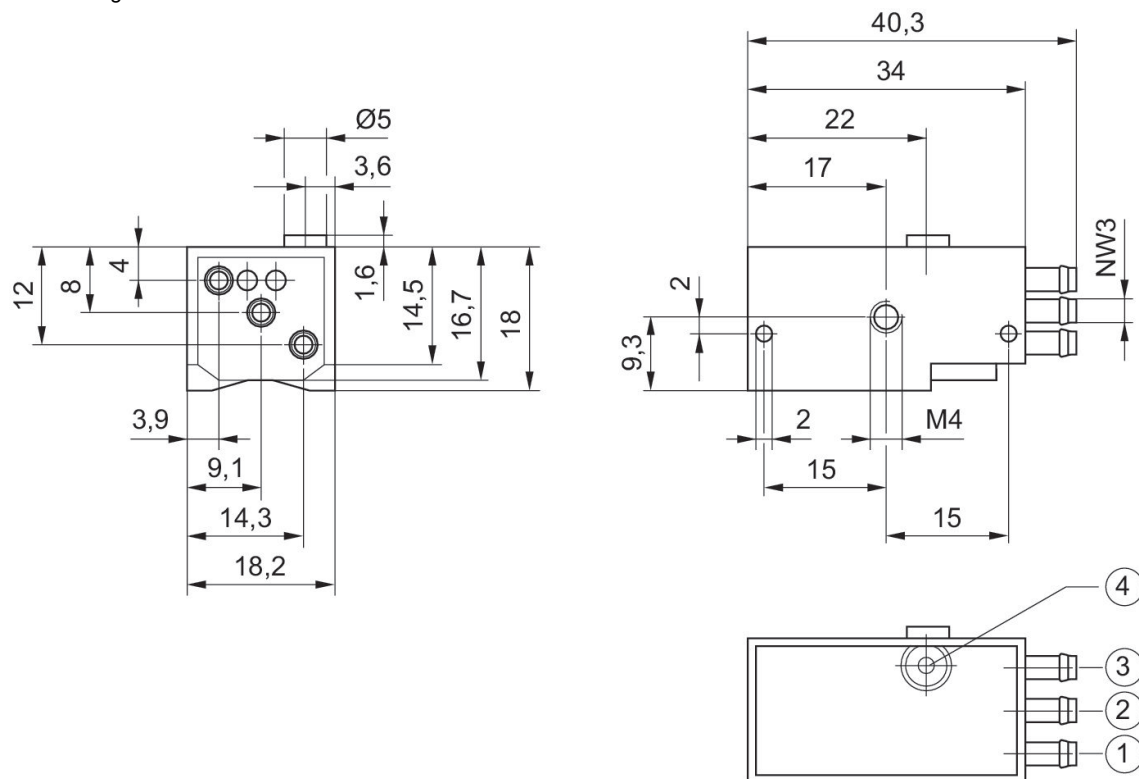
**Pneumatischer Sensor, Serie SP1**

40 l/min



Schaltzeit Ein [ms]	Schaltzeit Aus [ms]	Schaltpunktgenauigkeit	Materialnummer
12	25	±0,2 mT	0820212201

**Abmessungen**



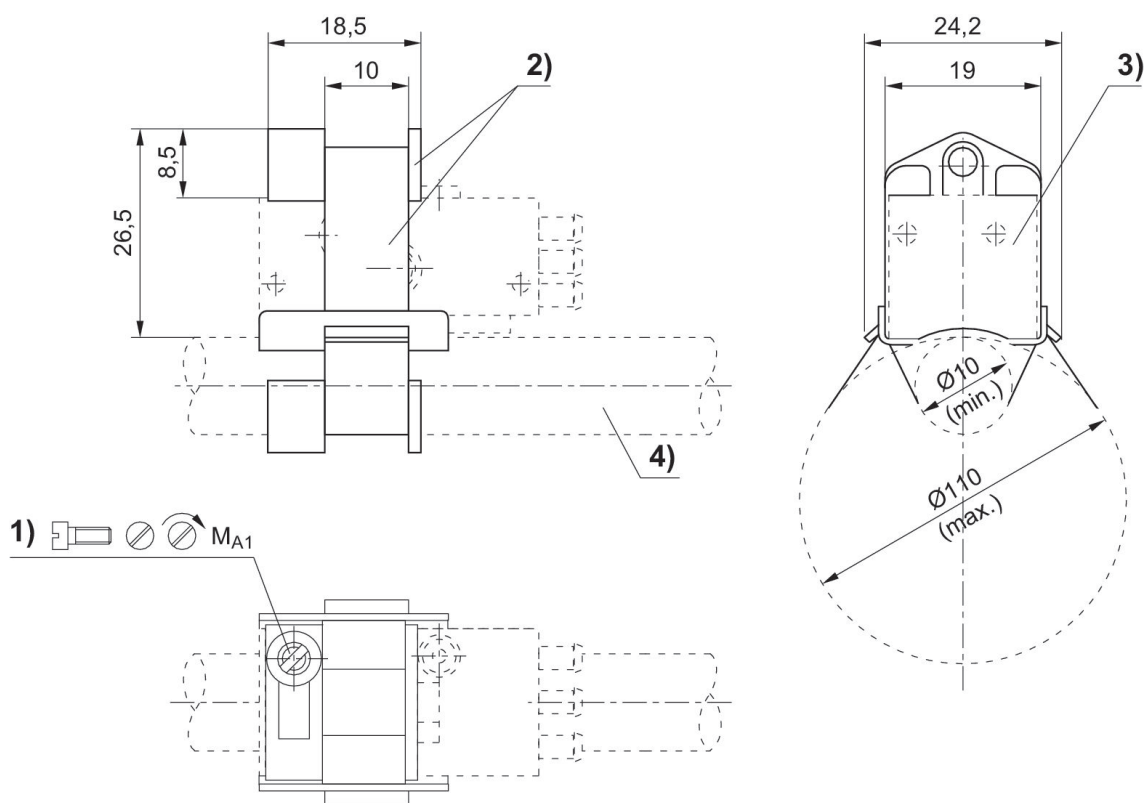
1) Druckluftanschluss 2) Ausgangsleitung 3) Entlüftung 4) Optische Anzeige

**Sensorbefestigung, Serie CB1**

SP1



Zylinder-Ø min. [mm]	Zylinder-Ø max. [mm]	Werkstoff	Materialnummer
10	100	Aluminium	1821205002



1) Klemmschraube 2) Spannband mit Halter 3) Sensor 4) Zylinderrohr

Materialnummer	Zylinder-Ø	MA1 [Nm]
1821205002	10 - 100 mm	<0,5

# Efficient pneumatic solutions, our program: cylinders and drives, valves and valve systems, air supply management



Visit us: [Emerson.com/Aventics](https://www.emerson.com/aventics)

Your local contact: [Emerson.com/contactus](https://www.emerson.com/contactus)



[Emerson.com](https://www.emerson.com)



[Facebook.com/EmersonAutomationSolutions](https://www.facebook.com/EmersonAutomationSolutions)



[LinkedIn.com/company/Emerson-Automation-Solutions](https://www.linkedin.com/company/Emerson-Automation-Solutions)



[Twitter.com/EMR\\_Automation](https://twitter.com/EMR_Automation)

An example configuration is depicted on the title page. The delivered product may thus vary from that in the illustration. Subject to change. This Document, as well as the data, specifications and other information set forth in it, are the exclusive property of AVENTICS GmbH. It may not be reproduced or given to third parties without its consent. Only use the AVENTICS products shown in industrial applications. Read the product documentation completely and carefully before using the product. Observe the applicable regulations and laws of the respective country. When integrating the product into applications, note the system manufacturer's specifications for safe use of the product. The data specified only serve to describe the product. No statements concerning a certain condition or suitability for a certain application can be derived from our information. The information given does not release the user from the obligation of own judgment and verification. It must be remembered that the products are subject to a natural process of wear and aging.

The Emerson logo is a trademark and service mark of Emerson Electric Co. Brand logotype are registered trademarks of one of the Emerson family of companies. All other marks are the property of their respective owners. © 2019 Emerson Electric Co. All rights reserved.



**CONSIDER IT SOLVED™**