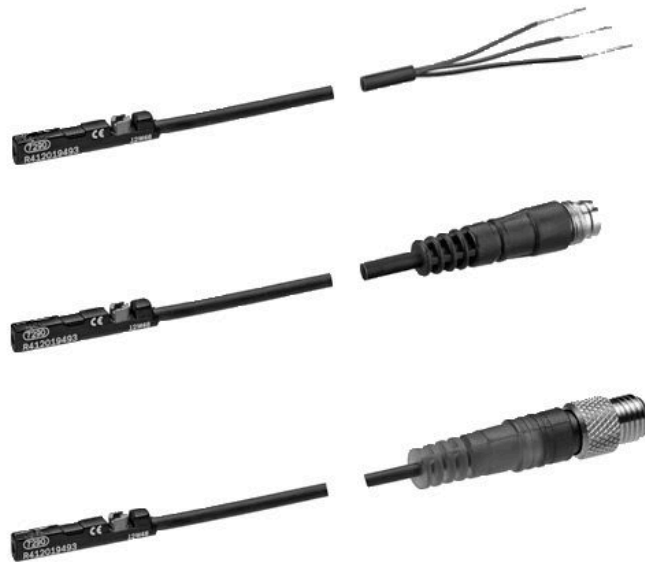


ST4-2P



AVENTICS™

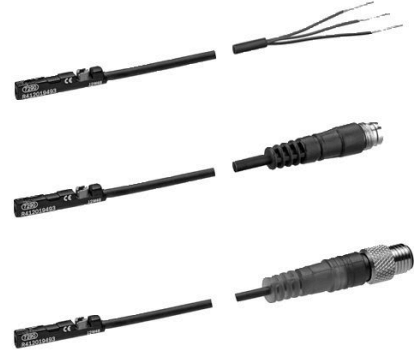
**AVENTICS Series ST4 Magnetic
proximity sensors**



Sensors, Series ST4-2P

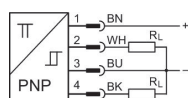
The AVENTICS Series ST4-2P sensors make it possible to measure any two switching points in a 50 mm range using just one sensor in a 4 mm C-slot. As a result, there is no need to install a second sensor, making the process easier, faster and more precise. Assembly and cabling effort are also halved. A serial interface is provided for diagnosis and configuration.

- One sensor for two switching points
- Two switch outputs 2x PNP make contact
- Only one C-groove is assigned
- IO-Link
- Half the effort for assembly and wiring
- Intuitive, precise programming of switching points



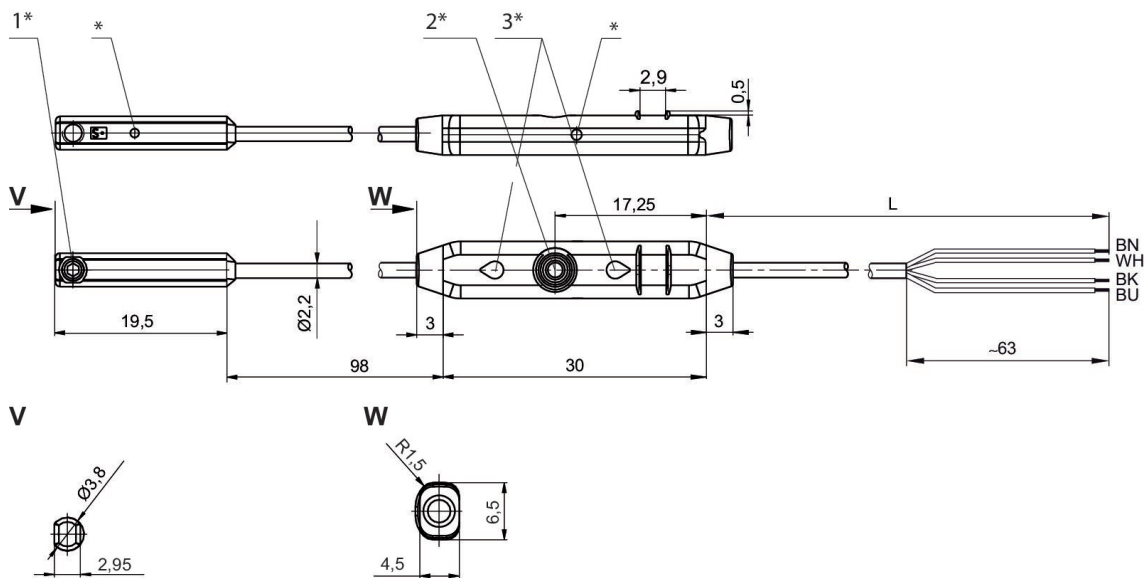
Sensors, Series ST4-2P

PRA
SSI
RTC
GPC
MSC
MSN
RCM
CVI
without wire end ferrule, tin-plated
RoHS



Direct mounting for series	Type of contact	Cable length L [m]	Max. DC switching current [A]	Min. operating voltage DC [V DC]	Max. operating voltage DC [V DC]	Version	Part No.
PRA, SSI, RTC, GPC, MSC, MSN, RCM, CVI	electronic PNP	2	0.15	12	30	short circuit resistant, Protected against polarity reversal	R412010139

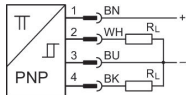
Dimensions



1* = mounting screw 2* = teach button 3* = LED
L = cable length
(2) WH=white
* Switching point

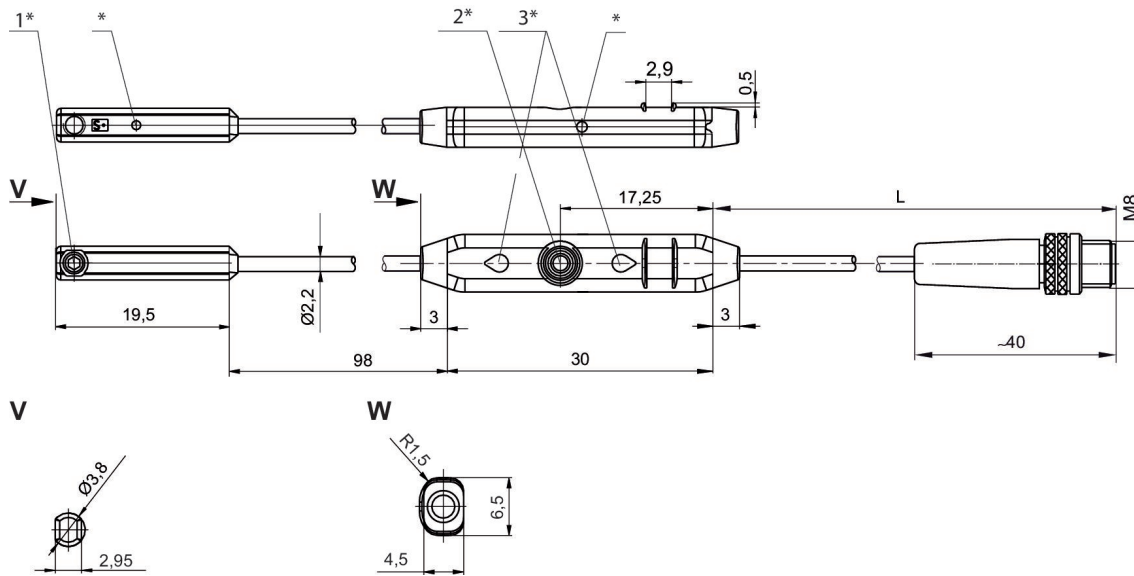
Sensors, Series ST4-2P

PRA
SSI
RTC
GPC
MSC
MSN
RCM
CVI
Plug
M8x1
RoHS



Direct mounting for series	Type of contact	Cable length L [m]	Min. operating voltage DC [V DC]	Max. operating voltage DC [V DC]	Version	Part No.
PRA, SSI, RTC, GPC, MSC, MSN, RCM, CVI	electronic PNP	0.3	12	30	short circuit resistant, Protected against polarity reversal	R412010140

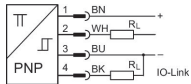
Dimensions



1* = mounting screw 2* = teach button 3* = LED
L = cable length
* Switching point

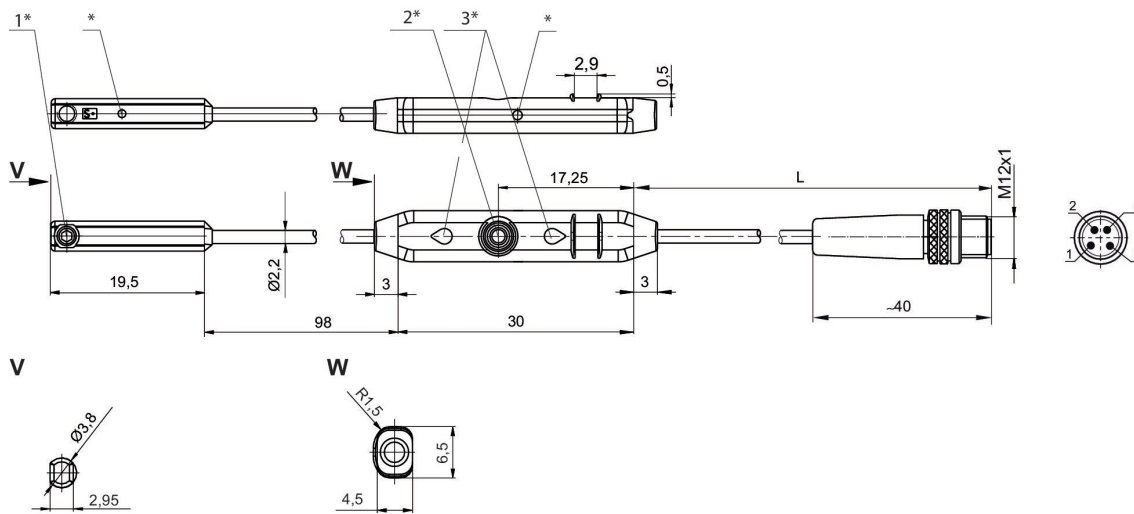
Sensors, Series ST4-2P

PRA
SSI
RTC
GPC
MSC
MSN
RCM
CVI
Plug
M12x1
RoHS



Direct mounting for series	Type of contact	Cable length L [m]	Min. operating voltage DC [V DC]	Max. operating voltage DC [V DC]	Version	Part No.
PRA, SSI, RTC, GPC, MSC, MSN, RCM, CVI	electronic PNP	0.3	12	30	Wire break protection, Short circuit resistance, Reverse polarity protection, Switch-on pulse suppression	R412023459

Dimensions



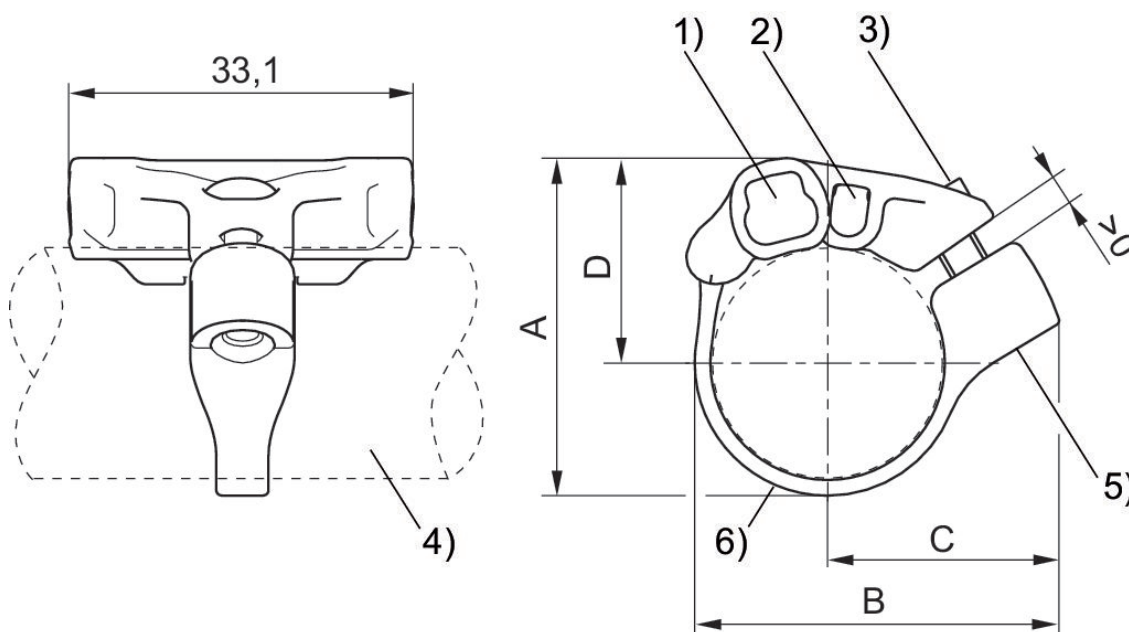
1* = mounting screw 2* = teach button 3* = LED
L = cable length
PIN assignment: 1 = (+), 2 = (OUT), 3 = (-), 4 = (OUT) IO-Link
* Switching point

Sensor mounting, Series CB1

ST4
ST6



Min. cylinder Ø [mm]	Material	Part No.
16	Polyamide, Stainless Steel	R412021791
20	Polyamide, Stainless Steel	R412021792
25	Polyamide, Stainless Steel	R412021793

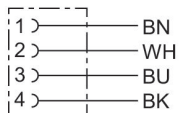


1) Sensor slot for ST6 2) Sensor slot for ST4 3) Mounting screw (made of stainless steel) 4) Cylinder profile 5) Thread insert (made of stainless steel) 6) Tightening strap

Part No.	A	B	C	D
R412021791	27.7	32.5	22.1	17.3
R412021792	32.4	35	22.4	19.7
R412021793	37.4	39.5	24.3	22.2

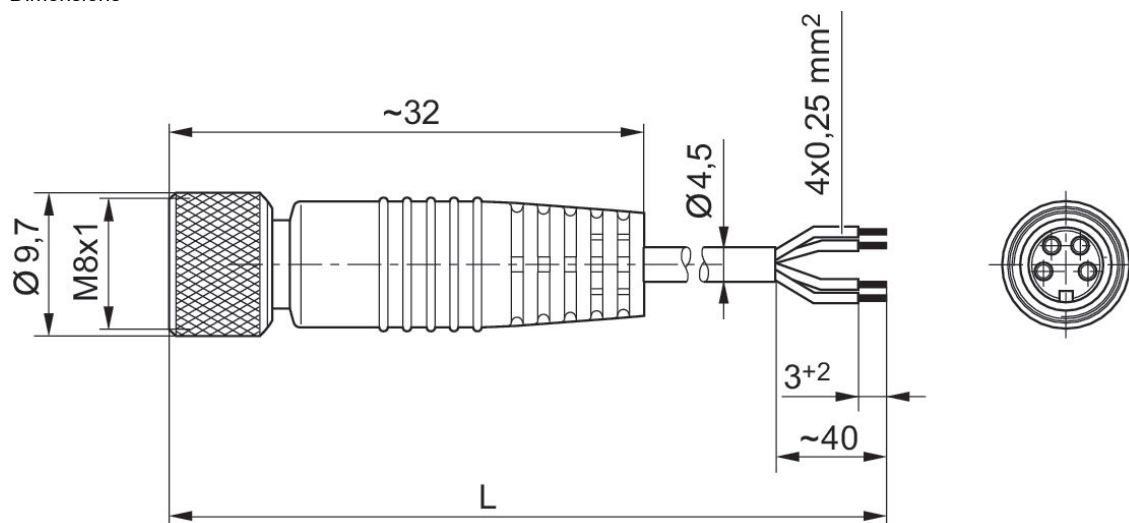
Round plug connector, Series CON-RD

Socket
M8x1
4-pin



Operational voltage	Electrical connection 1, type	Electrical connection 1, thread size	Electrical connection 2, type	Cable length [m]	Part No.
48 V AC/DC	Socket	M8x1	open cable ends	3	1834484144
48 V AC/DC	Socket	M8x1	open cable ends	5	1834484146

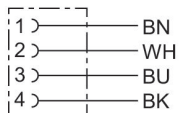
Dimensions



L = length

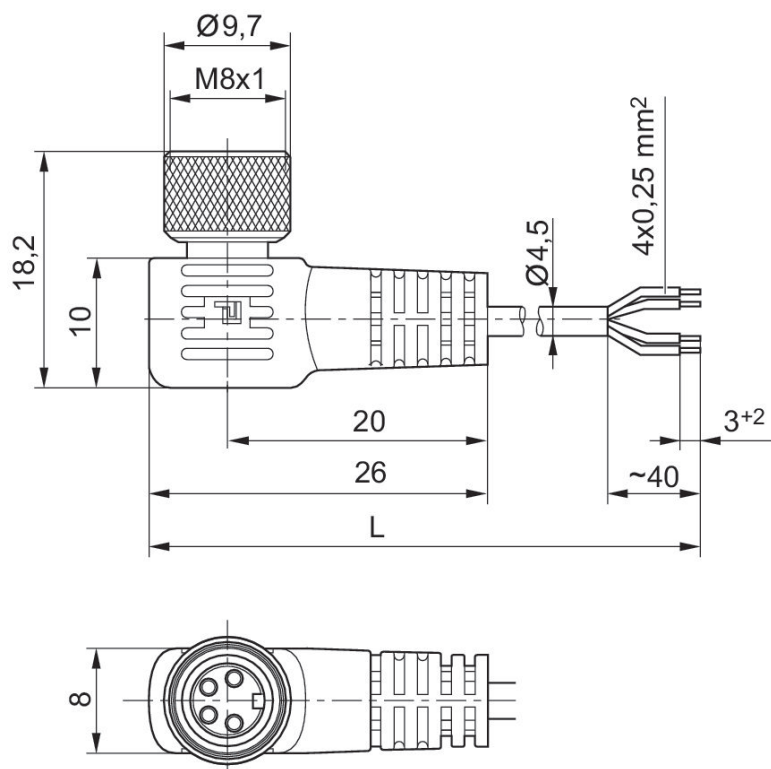
Round plug connector, Series CON-RD

Socket
M8x1
4-pin



Operational voltage	Electrical connection 1, type	Electrical connection 1, thread size	Electrical connection 2, type	Cable length [m]	Part No.
48 V AC/DC	Socket	M8x1	open cable ends	3	1834484145
48 V AC/DC	Socket	M8x1	open cable ends	5	1834484147

Dimensions in mm

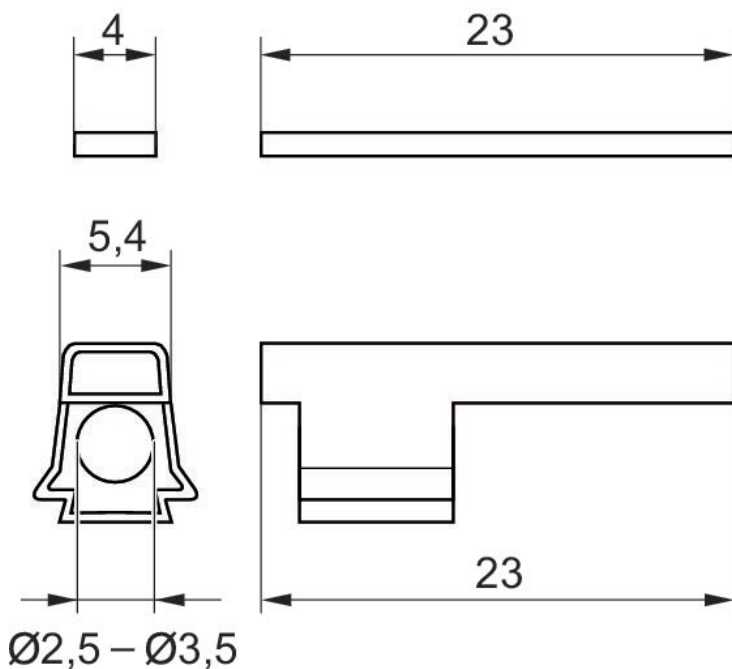


L = length

Name plate



Min. ambient temperature [°C]	Max. ambient temperature [°C]	Delivery unit [piece]	Housing material	Part No.
-40	100	10	Polycarbonate	R412026278



Efficient pneumatic solutions, our program: cylinders and drives, valves and valve systems, air supply management



Visit us: [Emerson.com/Aventics](https://www.emerson.com/aventics)

Your local contact: [Emerson.com/contactus](https://www.emerson.com/contactus)



[Emerson.com](https://www.emerson.com)



[Facebook.com/EmersonAutomationSolutions](https://www.facebook.com/EmersonAutomationSolutions)



[LinkedIn.com/company/Emerson-Automation-Solutions](https://www.linkedin.com/company/Emerson-Automation-Solutions)



[Twitter.com/EMR_Automation](https://twitter.com/EMR_Automation)

An example configuration is depicted on the title page. The delivered product may thus vary from that in the illustration. Subject to change. This Document, as well as the data, specifications and other information set forth in it, are the exclusive property of AVENTICS GmbH. It may not be reproduced or given to third parties without its consent. Only use the AVENTICS products shown in industrial applications. Read the product documentation completely and carefully before using the product. Observe the applicable regulations and laws of the respective country. When integrating the product into applications, note the system manufacturer's specifications for safe use of the product. The data specified only serve to describe the product. No statements concerning a certain condition or suitability for a certain application can be derived from our information. The information given does not release the user from the obligation of own judgment and verification. It must be remembered that the products are subject to a natural process of wear and aging.

The Emerson logo is a trademark and service mark of Emerson Electric Co. Brand logotype are registered trademarks of one of the Emerson family of companies. All other marks are the property of their respective owners. © 2019 Emerson Electric Co. All rights reserved.



CONSIDER IT SOLVED™