

Sensoren, Serie SN6



AVENTICS™

AVENTICS Serie
SN6 Magnetische
Näherungssensoren


EMERSON™

Sensoren, Serie SN6

Die magnetischen Reed-Sensoren der Serie SN6 von AVENTICS passen zu Zugankerzylindern. Hitze- und Stofestigkeit machen diesen Sensor perfekt fur anspruchsvolle Anwendungen.

- Kontaktart Reed
- ATEX
- Variante Form B Industrie
- 2-polig
- warmerbestandig



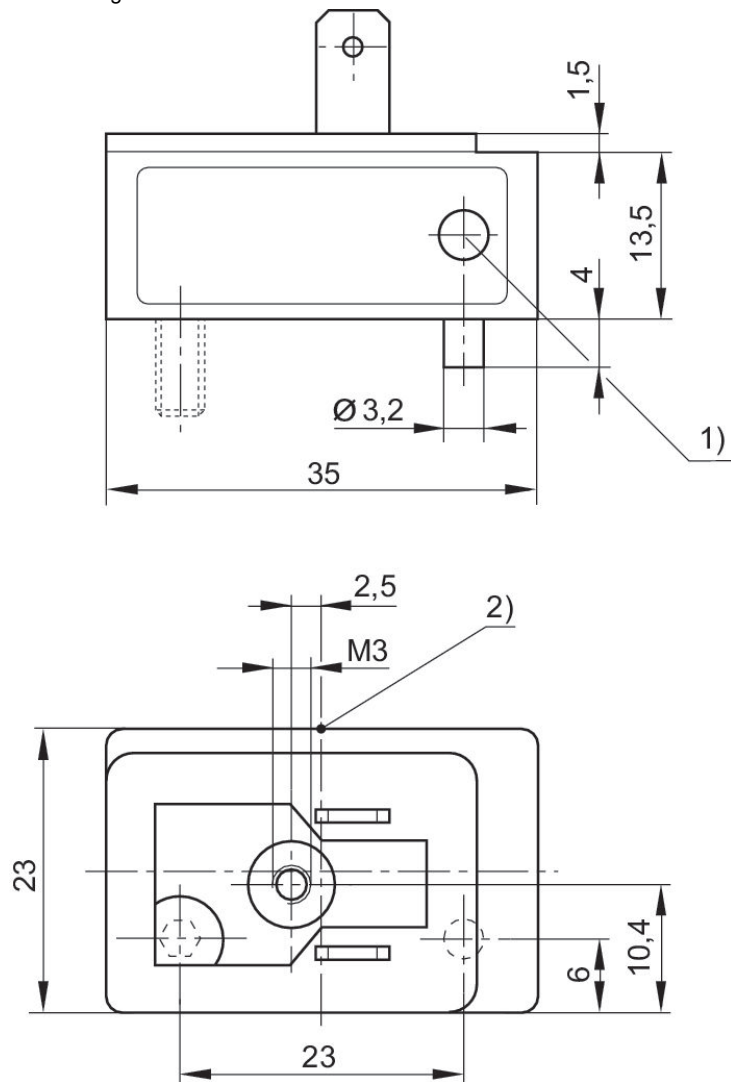
Sensor, Serie SN6

Stecker
Form B Industrie



Kontaktart	Elektrischer Anschluss Anzahl Pole	Schaltstrom DC, max. [A]	Schaltstrom AC, max. [A]	Betriebsspannung DC, min. [V DC]	Betriebsspannung DC, max. [V DC]	Betriebsspannung AC, min. [V AC]	Betriebsspannung AC, max. [V AC]	Ausfuh- rung	Materialnummer
Reed	2-polig	3	3	10	48	10	48		8940410602
Reed	2-polig	0.5	0.5	10	48	10	48	verpolungs- sicher	8940410612

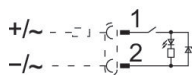
Abmessungen



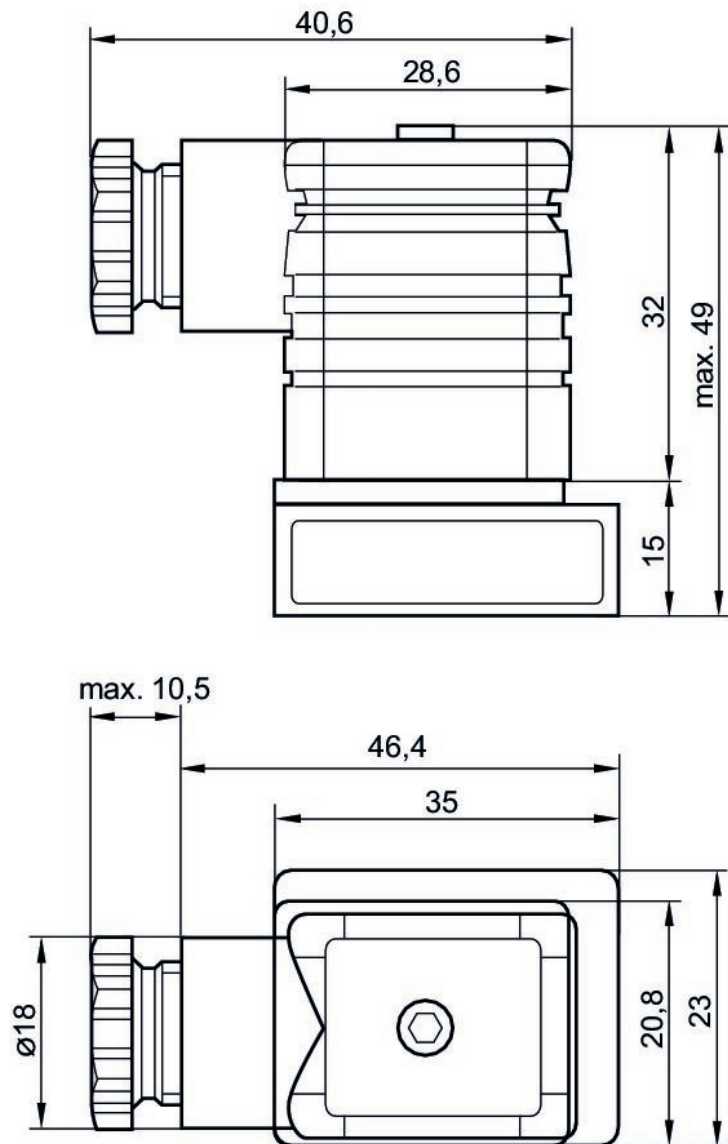
- 1) LED
- 2) Schaltpunkt

Sensor, Serie SN6

Stecker
Form B Industrie
ATEX



Kontaktart	Elektrischer Anschluss Anzahl Pole	Schaltstrom DC, max. [A]	Schaltstrom AC, max. [A]	Betriebsspannung DC, min. [V DC]	Betriebsspannung DC, max. [V DC]	Betriebsspannung AC, min. [V AC]	Betriebsspannung AC, max. [V AC]	Ausfuh- rung	Materialnummer
Reed	2-polig	0.1	0.1	21.6	26.4	210	240	verpolungs- sicher	R412000823



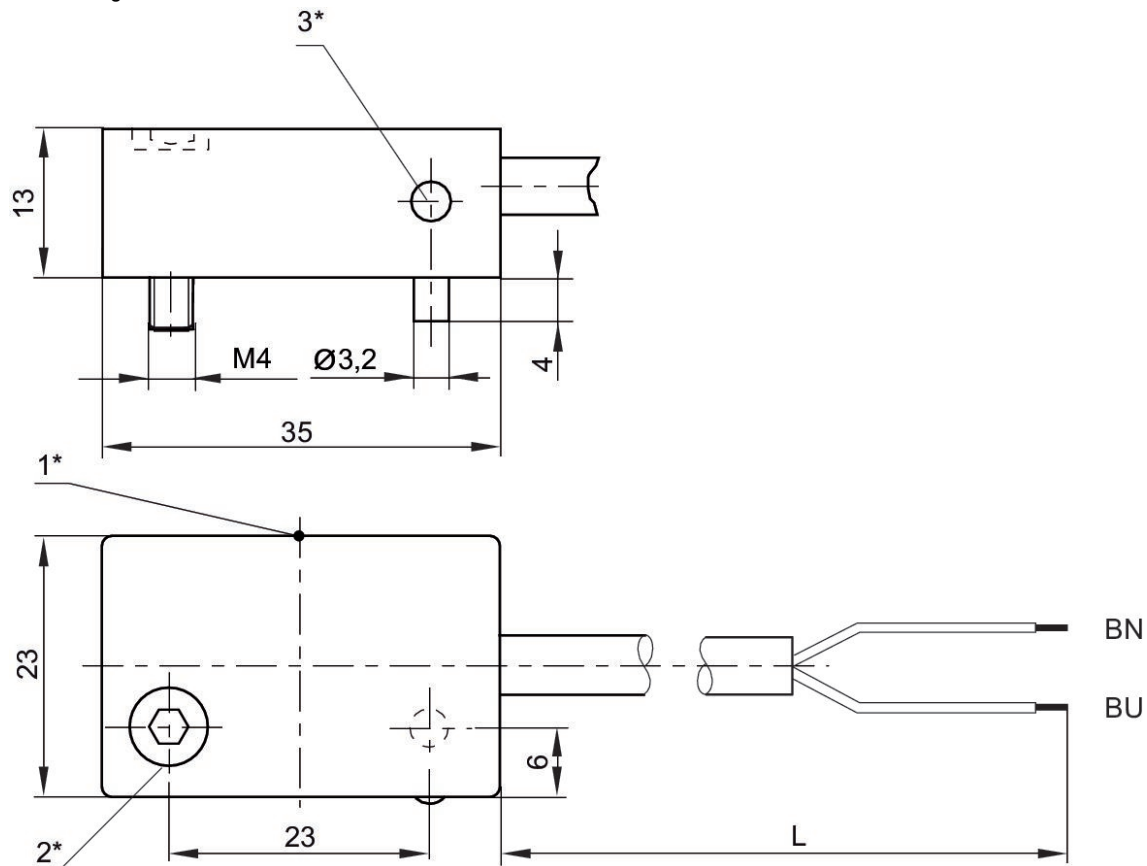
Sensor, Serie SN6

Aderenden verzinkt



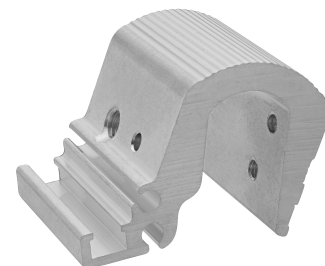
Kon- taktart	Kabe- lumman- telung	Elektri- scher An- schluss Anzahl Pole	Kabel- lange L [m]	Schalt- strom DC, max. [A]	Schalt- strom AC, max. [A]	Betriebs- span- nung DC, min. [V DC]	Betriebs- span- nung DC, max. [V DC]	Betriebs- span- nung AC, min. [V AC]	Betriebs- span- nung AC, max. [V AC]	Ausfuh- rung	Materialnummer
Reed	Polyvinyl- chlorid	2-polig	2.5	0.5	0.5	10	48	10	48	verpo- lungssi- cher	8940412022
Reed	Polyvinyl- chlorid	2-polig	6	0.5	0.5	10	48	10	48	verpo- lungssi- cher	8940412032
Reed	Polyvinyl- chlorid	2-polig	2.5	3	3	10	48	10	48	verpo- lungssi- cher	8940411902
Reed	Polyvinyl- chlorid	2-polig	10	3	3	10	48	10	48	verpo- lungssi- cher	8940411922

Abmessungen

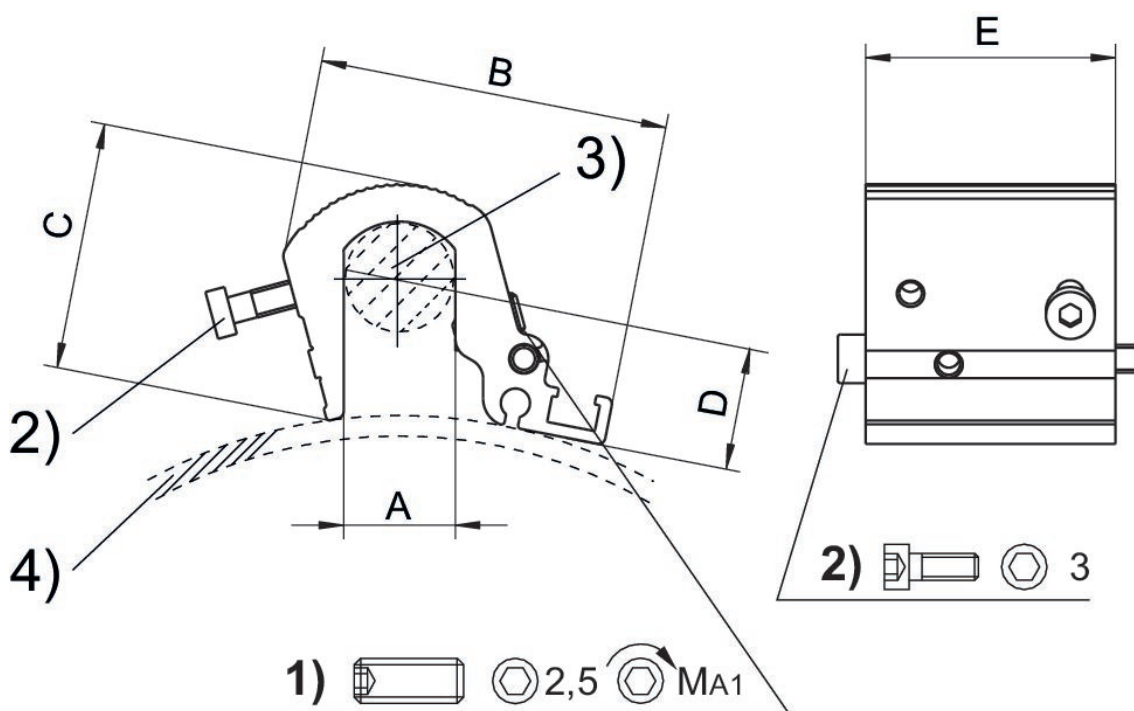


1* = Schaltpunkt 2* = Klemmschraube 3* = LED
L = Kabellange BN=braun, BU=blau

Sensorbefestigung, Serie CB1



Zylinder-Ø min. [mm]	Zylinder-Ø max. [mm]	für Sensor	Werkstoff	Materialnummer
160	200	ST6, SN2, SN6, SN1, SM6	Aluminium	R412017979
250	320	ST6, SN2, SN6, SN1, SM6	Aluminium	R412017980



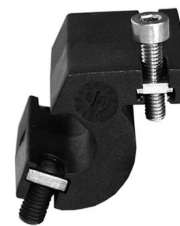
1) Klemmgewindestift 2) Befestigungsschrauben für Sensor 3) Zuganker 4) Zylinderprofil

Zylinder-Ø	Materialnummer	A	B	C	D	E	MA1 [Nm]
160 - 200 mm	R412017979	16	51	36	6.8	36	2
250 - 320 mm	R412017980	24	56	44.5	6.8	36	2

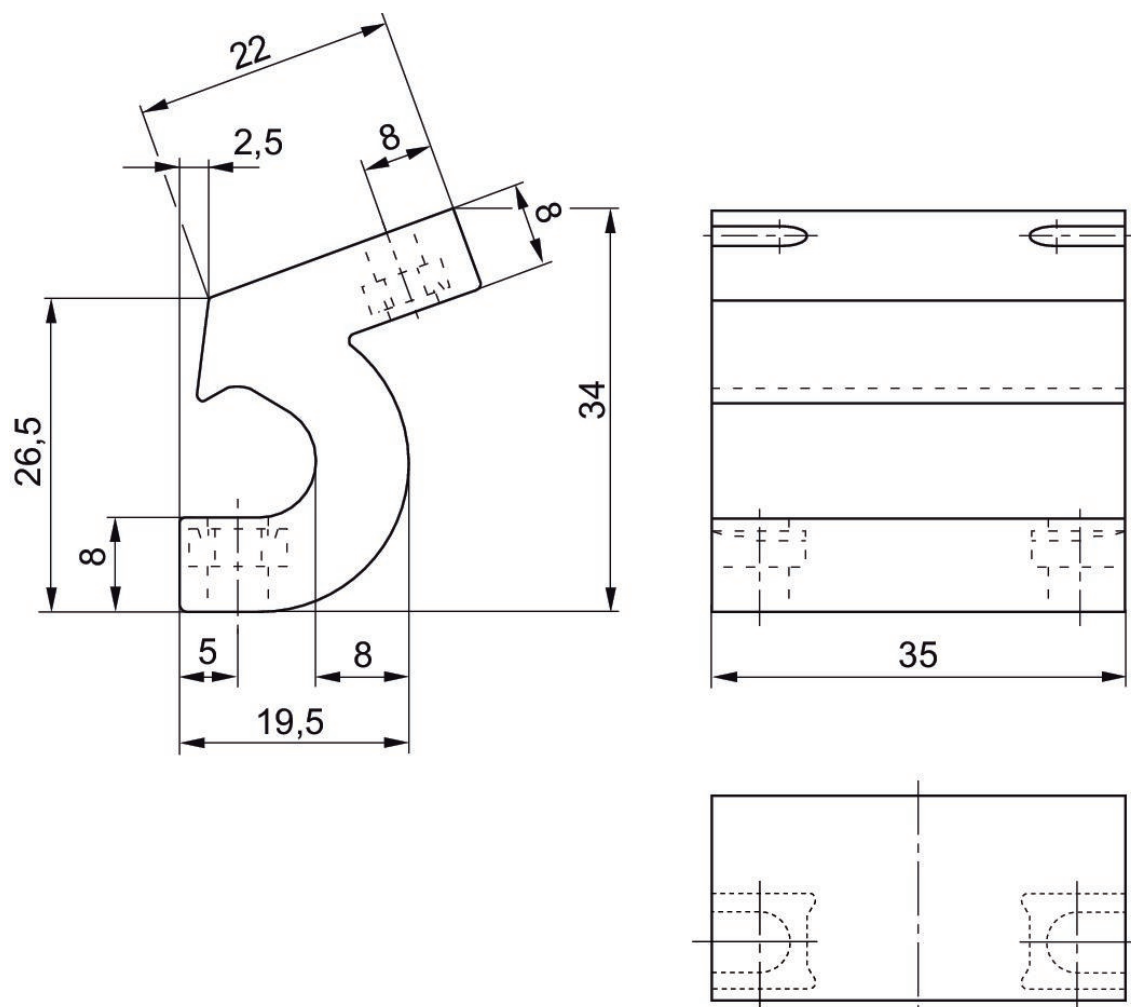
Lieferumfang: inkl. Befestigungsschrauben

Sensorbefestigung, Serie CB1

SN6



Zylinder-Ø min. [mm]	Zylinder-Ø max. [mm]	Werkstoff	Materialnummer
32	63	Polyamid	5230033502

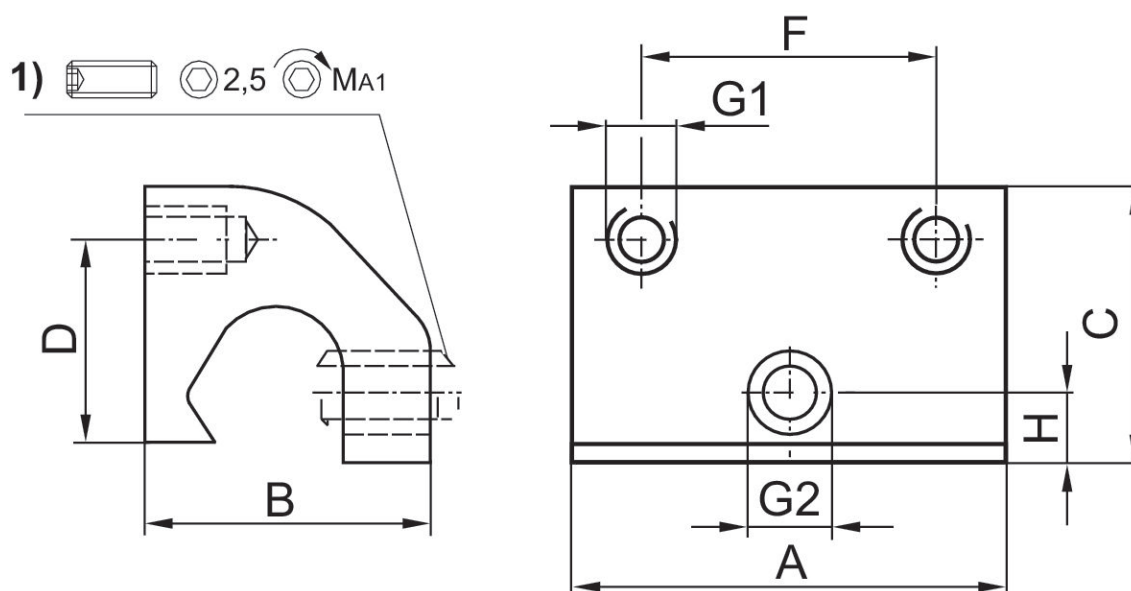


Sensorbefestigung, Serie CB1

SN6



Zylinder-Ø min. [mm]	Zylinder-Ø max. [mm]	Werkstoff	Materialnummer
32	63	Aluminium	3220613562
80	125	Aluminium	3220643562



1) Klemmgewindestift

Materialnummer	Zylinder-Ø	A	B	C	D	F	G1	G2	H	MA1 [Nm]
3220643562	80 - 125 mm	35	22	21	12	23	M4	M5	5	1,8 +0,4
3220613562	32 - 63 mm	35	22	21	16	23	M4	M5	5	1,8 +0,4

Efficient pneumatic solutions, our program: cylinders and drives, valves and valve systems, air supply management



Visit us: [Emerson.com/Aventics](https://www.emerson.com/Aventics)

Your local contact: [Emerson.com/contactus](https://www.emerson.com/contactus)



[Emerson.com](https://www.emerson.com)



[Facebook.com/EmersonAutomationSolutions](https://www.facebook.com/EmersonAutomationSolutions)



[LinkedIn.com/company/Emerson-Automation-Solutions](https://www.linkedin.com/company/Emerson-Automation-Solutions)



[Twitter.com/EMR_Automation](https://twitter.com/EMR_Automation)

An example configuration is depicted on the title page. The delivered product may thus vary from that in the illustration. Subject to change. This Document, as well as the data, specifications and other information set forth in it, are the exclusive property of AVENTICS GmbH. It may not be reproduced or given to third parties without its consent. Only use the AVENTICS products shown in industrial applications. Read the product documentation completely and carefully before using the product. Observe the applicable regulations and laws of the respective country. When integrating the product into applications, note the system manufacturer's specifications for safe use of the product. The data specified only serve to describe the product. No statements concerning a certain condition or suitability for a certain application can be derived from our information. The information given does not release the user from the obligation of own judgment and verification. It must be remembered that the products are subject to a natural process of wear and aging.

The Emerson logo is a trademark and service mark of Emerson Electric Co. Brand logotype are registered trademarks of one of the Emerson family of companies. All other marks are the property of their respective owners. © 2019 Emerson Electric Co. All rights reserved.



CONSIDER IT SOLVED™