

Série RG1



AVENTICS™

**Régulateurs de pression à
commande manuelle AVENTICS
série RG1**


EMERSON™

Série RG1

La série AVENTICS RG1 se compose d'un régulateur de pression à piston pour montage sur panneau

- Qn max. 70 l/min
- Largeur 17 mm
- Pression de service min./max. 0 ... 10 bar



Vue d'ensemble des produits

Série RG1

Série RG1.....	4
----------------	---

Série RG1

Qn 1 > 2: 70 l/min

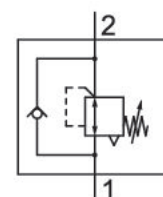
Entrée raccord d'air comprimé: M5

Sortie raccord d'air comprimé: M5

Température ambiante mini./maxi.: 0 °C ... 60 °C

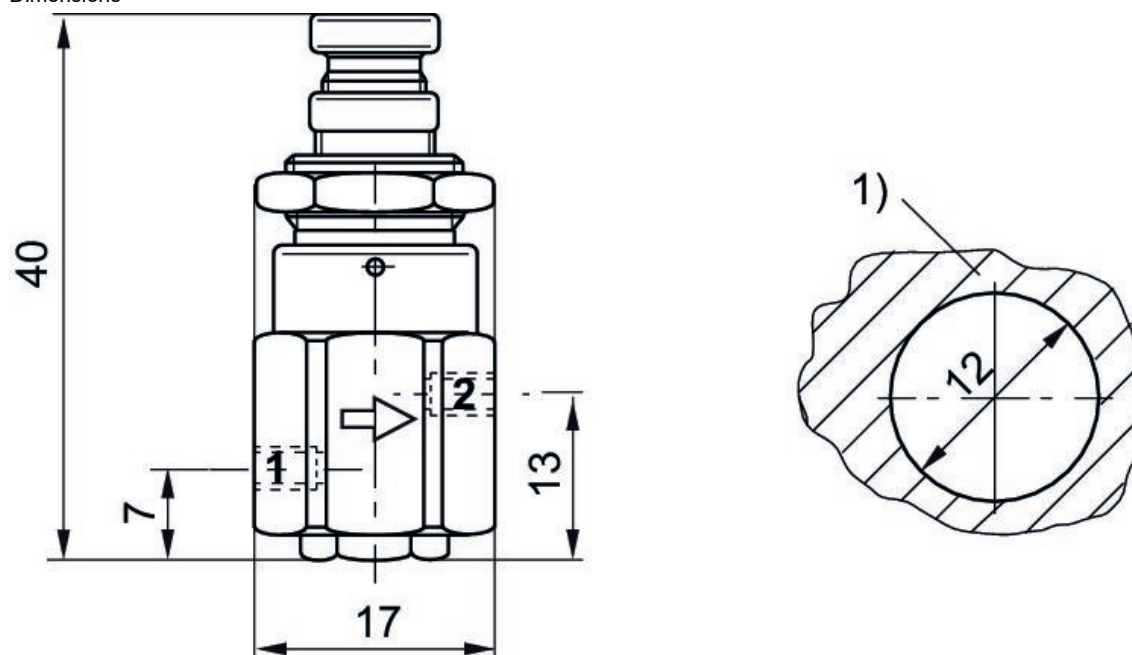
Température min./max. du fluide: 0 °C ... 60 °C

Pression de service mini./maxi.: 0 bar ... 10 bar



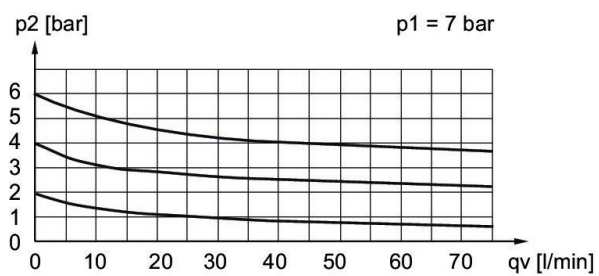
Sortie raccord d'air comprimé	Plage de réglage de la pression min. [bar]	Plage de réglage de la pression max. [bar]	Débit Qn [l/min]	Référence
M5	1	8	70	R412010705

Dimensions



1) Montage sur panneau

Caractéristiques de débit, $p_2 = 0,05 - 7 \text{ bar}$







p_1 = pression de service , p_2 = pression secondaire , q_v = débit nominal

Efficient pneumatic solutions, our program:
cylinders and drives, valves and valve systems,
air supply management, proportional pressure
control valves



Visit us: www.Emerson.com/aventics
Your local contact: Emerson.com/contactus

-  Emerson.com
-  Facebook.com/EmersonAutomationSolutions
-  LinkedIn.com/company/Emerson-Automation-Solutions
-  Twitter.com/EMR_Automation



The Emerson logo is a trademark and service mark of Emerson Electric Co. AVENTICS is a registered trademark of one of the Emerson family of companies. All other trademarks are the property of their respective owners. © 2020 Emerson Electric Co. All rights reserved.



CONSIDER IT SOLVED™