

Series RG1



AVENTICS™

**AVENTICS Series RG1 Manually
operated pressure regulators**


EMERSON™

Series RG1

AVENTICS RG1 Series are composed of Piston pressure regulator for panel installation

- Qn max. 70 l/min
- Width 17 mm
- Working pressure min./max. 0 ... 10 bar



Product overview

Series RG1

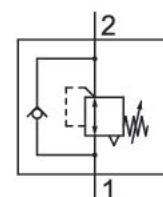
Series RG1.....

Page

4

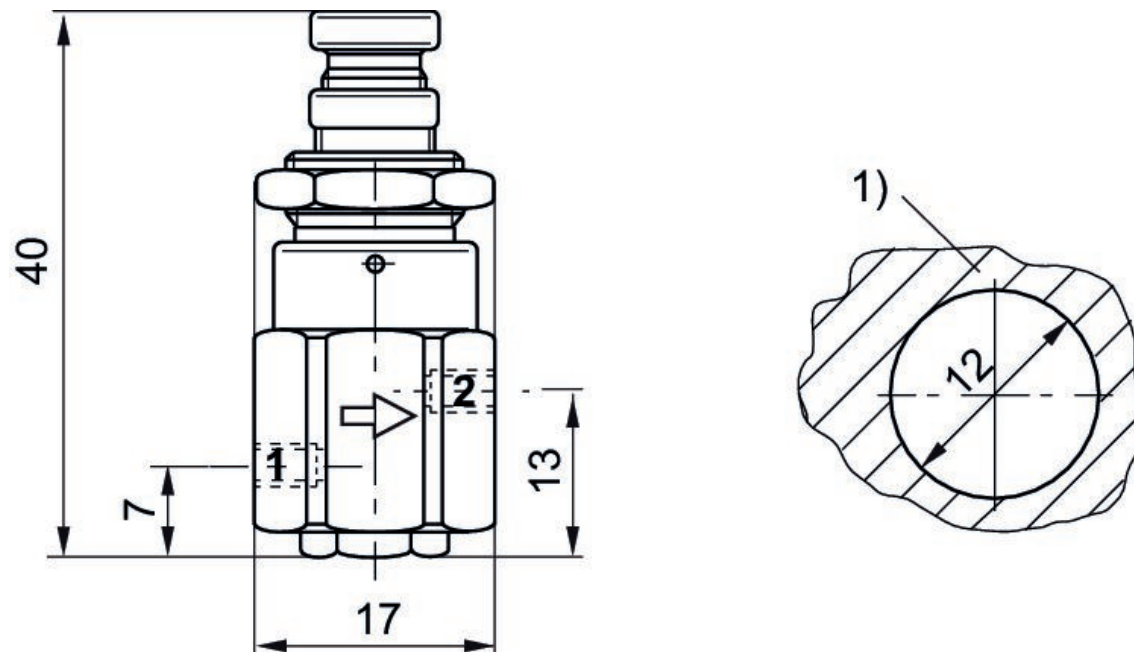
Series RG1

Qn 1 > 2: 70 l/min
 Compressed air connection input: M5
 Compressed air connection output: M5
 Ambient temperature min./max.: 0 °C ... 60 °C
 Medium temperature min./max.: 0 °C ... 60 °C
 Working pressure min./max.: 0 bar ... 10 bar



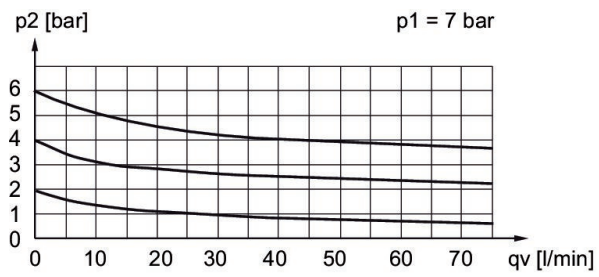
Compressed air connection output	Min. regulation range [bar]	Max. regulation range [bar]	Flow Qn [l/min]	Part No.
M5	1	8	70	R412010705

Dimensions



1) panel installation

Flow rate characteristic, $p_2 = 0,05 - 7 \text{ bar}$







p_1 = working pressure, p_2 = secondary pressure, q_v = nominal flow

Efficient pneumatic solutions, our program:
cylinders and drives, valves and valve systems,
air supply management, proportional pressure
control valves



Visit us: www.Emerson.com/aventics
Your local contact: Emerson.com/contactus

-  Emerson.com
-  Facebook.com/EmersonAutomationSolutions
-  LinkedIn.com/company/Emerson-Automation-Solutions
-  Twitter.com/EMR_Automation



The Emerson logo is a trademark and service mark of Emerson Electric Co. AVENTICS is a registered trademark of one of the Emerson family of companies. All other trademarks are the property of their respective owners. © 2020 Emerson Electric Co. All rights reserved.



CONSIDER IT SOLVED™