

Series SA2



AVENTICS™

**AVENTICS Series SA2 Industrial
shock absorbers**


EMERSON™

Series SA2

The AVENTICS Series SA2 industrial shock absorbers were created for AVENTICS actuators. They Series SA2 decelerate reliably moving masses and thereby increase process speed, production quality, the service life of production facilities and reduce operating noise.

- Wide product range
- High energy absorption and extended life time
- Improved surface protection against corrosion
- Integrated end stop



Product overview

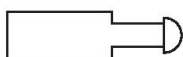
Industrial shock absorber

	Page
Industrial shock absorber, Series SA2-RC for Mini slide, Series MSC.....	4
Industrial shock absorber, Series SA2-RC for RCM rotary compact modules.....	6
Industrial shock absorber, Series SA2-RC for Rodless cylinders, RTC series.....	7

Accessories

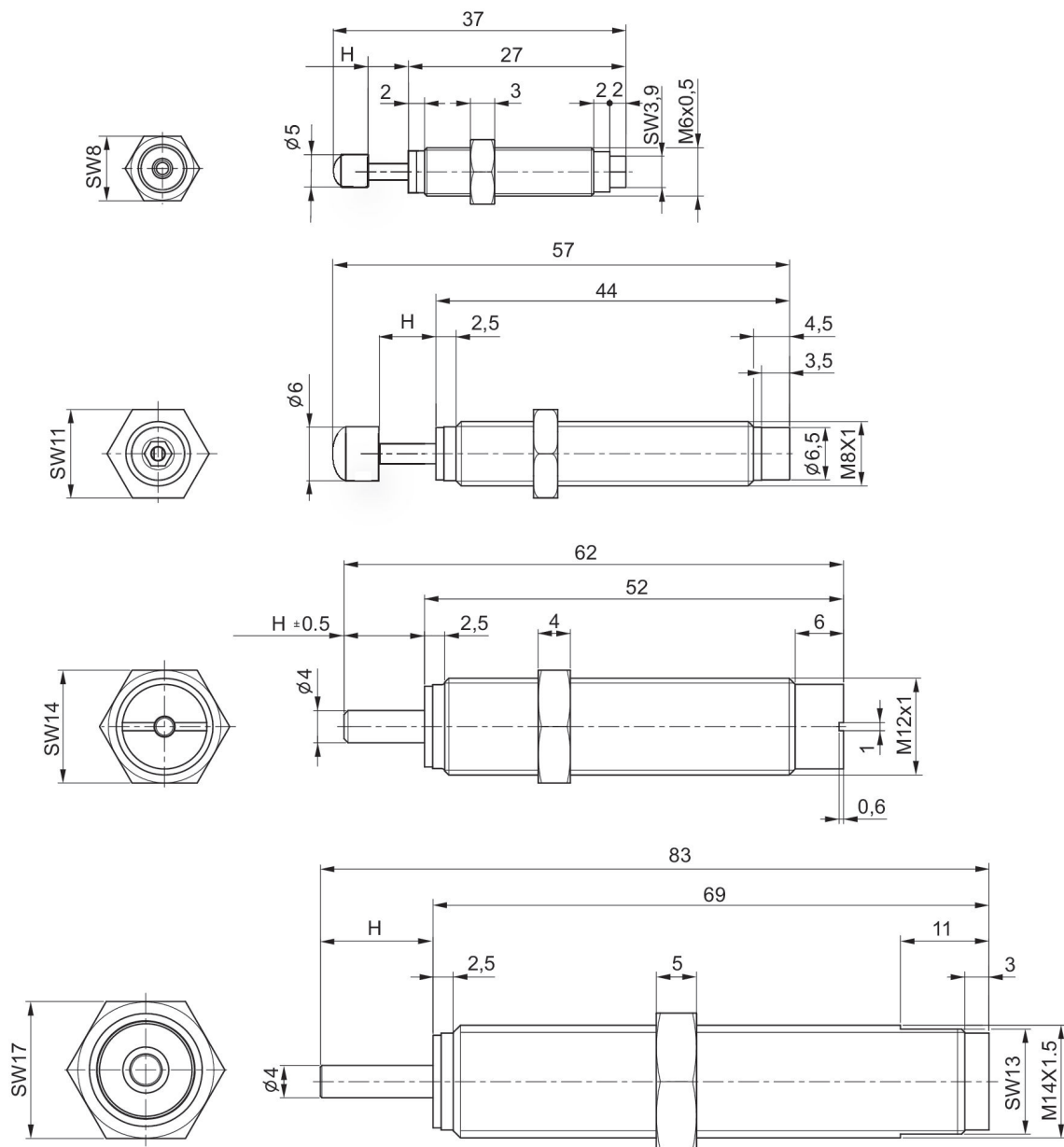
Holder for the shock absorber for stroke length adjustment.....	10
Shock absorber kit for stroke length adjustment.....	11

Industrial shock absorber, Series SA2-RC for Mini slide, Series MSC



Mounting thread	Stroke [mm]	Max. energy absorption/stroke [Nm]	Max. energy absorption/hour [Nm]	Effective mass m_e min. [kg]	Effective mass m_e max. [kg]	Min. return spring force [N]	Max. return spring force [N]	Part No.
M8x1	7	3	14100	1.7	50	2.5	6	R412010370
M12x1	10	8	26000	5	57	3.5	7	R412010371

Dimensions



H = stroke

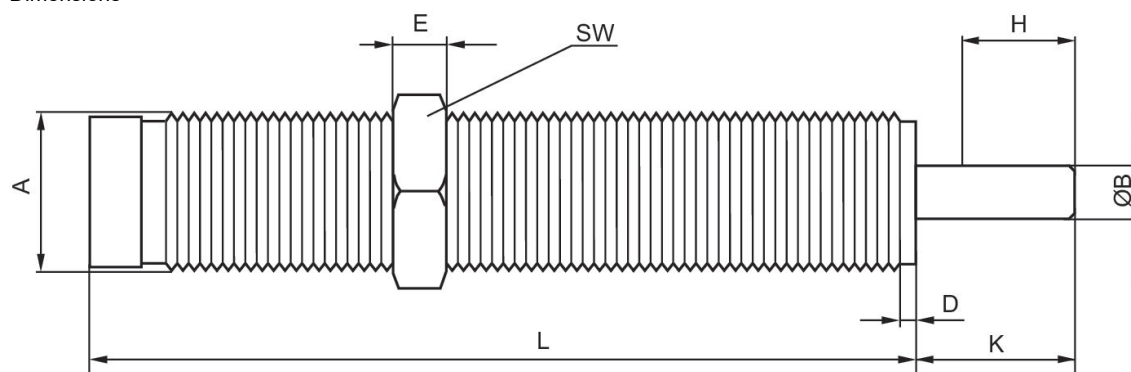
Industrial shock absorber, Series SA2-RC for RCM rotary compact modules

For series: RCM



Mounting thread	Stroke [mm]	Max. energy absorption/stroke [Nm]	Max. energy absorption/hour [Nm]	Effective mass m_e min. [kg]	Effective mass m_e max. [kg]	Min. return spring force [N]	Max. return spring force [N]	Part No.
M8x1	6	4	14400	2.8	70	2.5	6	R412004751
M10x1	6	9	21000	6	280	3.5	8	R412004752
M12x1	8.5	16	30000	17	510	3.5	7	R412004753
M14x1,5	9.5	20	40000	100	420	23	35	R412010089

Dimensions



H = stroke
A = mounting thread

Part No.	For series	Mounting thread	ØB	D	E	H	K	L	SW
R412004751	RCM-12	M8x1	2.5	2.5	3	6	9	44	11
R412004752	RCM-16	M10x1	3	2.5	3	6	9	49.5	13
R412004753	RCM-20	M12x1	4	2.5	4	8.5	11	65	14
R412010089	RCM-25	M14x1,5	4	2.5	5	9.5	14	69	17

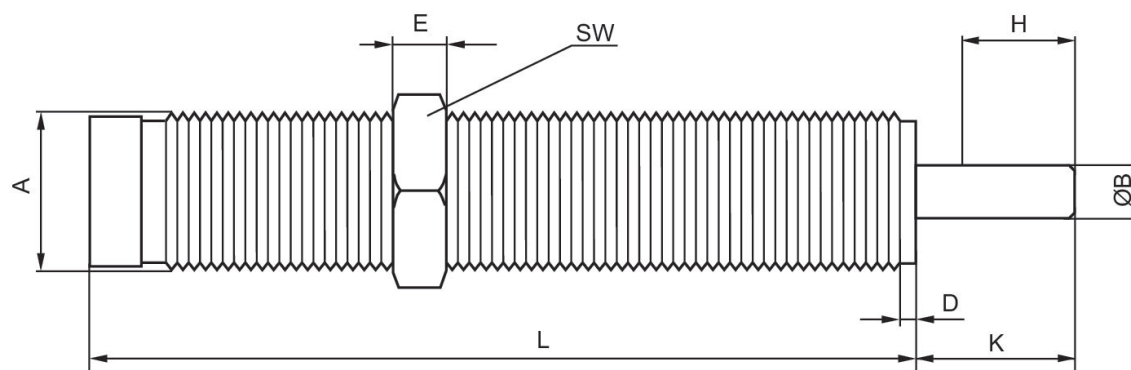
Industrial shock absorber, Series SA2-RC for Rodless cylinders, RTC series

For series: RTC



Mounting thread	Stroke [mm]	Max. energy absorption/stroke [Nm]	Max. energy absorption/hour [Nm]	Effective mass m_e min. [kg]	Effective mass m_e max. [kg]	Min. return spring force [N]	Max. return spring force [N]	Min. impact speed [m/s]	Max. impact speed [m/s]	Part No.
M12x1	10	14	30000	0.5	1.8	3.5	7	3.5	5	R412010695
M12x1	10	14	30000	1.5	7.7	3.5	7	1.9	4.3	R412010696
M12x1	10	14	30000	5	57	3.5	7	0.7	2.4	R412010697
M14x1,5	14	30	50000	3.5	17	13	23	1.9	4.1	R412010698
M14x1,5	14	30	50000	9.9	76	13	23	0.9	2.5	R412010699
M14x1,5	14	30	50000	62	252	13	23	0.5	1	R412010700
M20x1,5	13	65	52000	7.5	36	12	23	1.9	4.2	R412010701
M20x1,5	13	65	52000	20	160	12	23	0.9	2.6	R412010702
M20x1,5	13	65	52000	130	610	12	23	0.5	1	R412010703

Dimensions

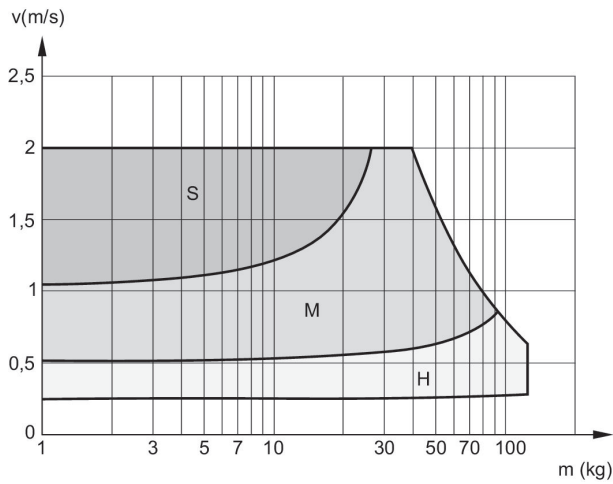


H = stroke
A = mounting thread

Part No.	Type	Mounting thread	ØB	D	E	H	K	L	SW
R412010695	SA2-RT	M12x1	4	2.5	4	10	15	52	14
R412010696	SA2-RT	M12x1	4	2.5	4	10	15	52	14
R412010697	SA2-RT	M12x1	4	2.5	4	10	15	52	14
R412010698	SA2-RT	M14x1,5	4	2.5	5	14	18.5	69	17
R412010699	SA2-RT	M14x1,5	4	2.5	5	14	18.5	69	17

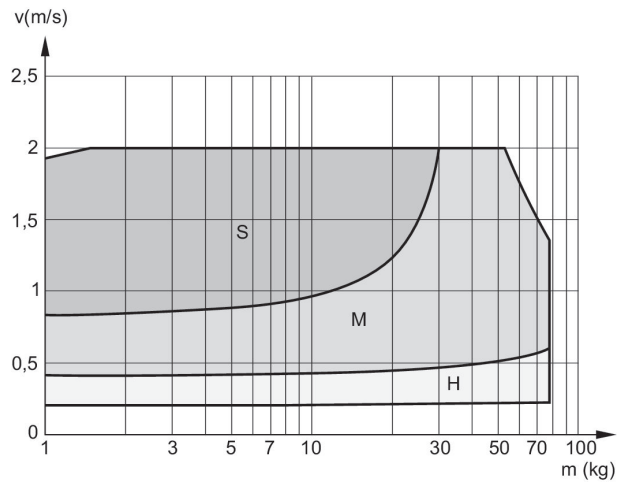
Part No.	Type	Mounting thread	ØB	D	E	H	K	L	SW
R412010700	SA2-RT	M14x1,5	4	2.5	5	14	18.5	69	17
R412010701	SA2-RT	M20x1,5	6	2.5	6	13	18	75	24
R412010702	SA2-RT	M20x1,5	6	2.5	6	13	18	75	24
R412010703	SA2-RT	M20x1,5	6	2.5	6	13	18	75	24

Cushioning diagram Ø 63 mm



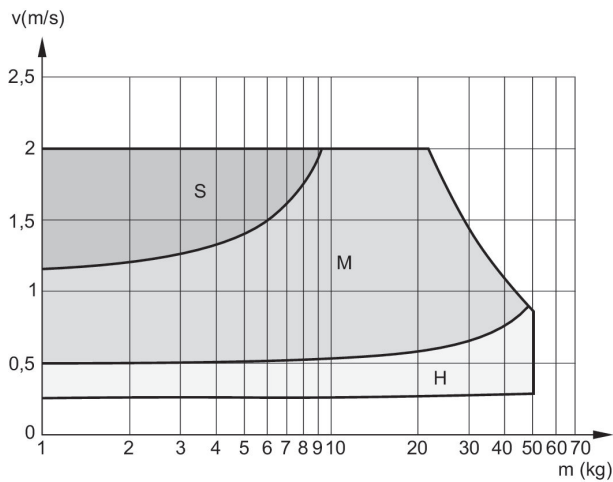
V = velocity [m/s]
M = moving mass
S = soft
M = medium
H = hard

Cushioning diagram Ø 50 mm



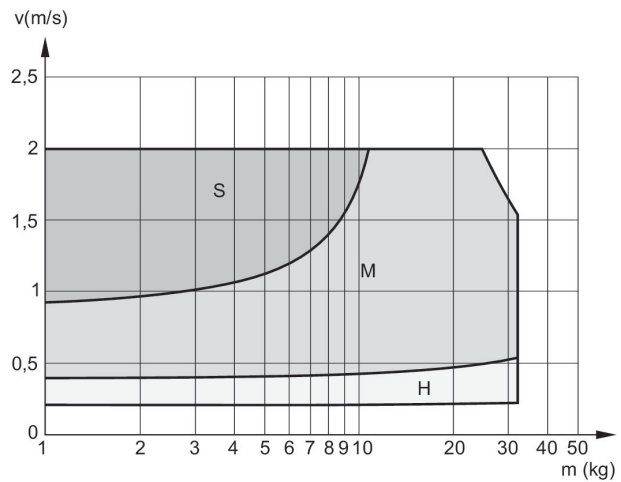
V = velocity [m/s]
M = moving mass
S = soft
M = medium
H = hard

Cushioning diagram Ø 40 mm



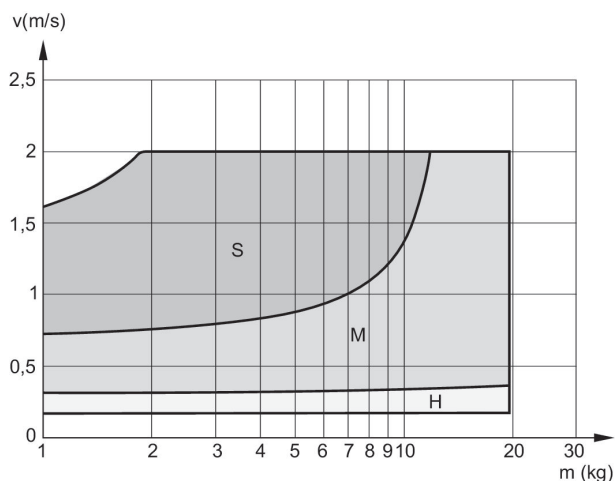
V = velocity [m/s]
M = moving mass
S = soft
M = medium
H = hard

Cushioning diagram Ø 32 mm



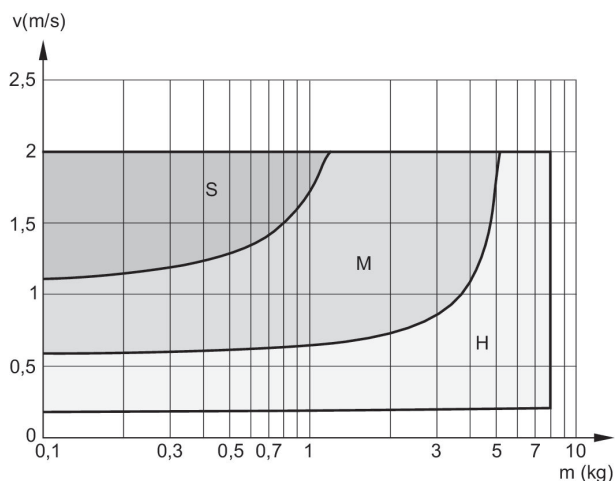
V = velocity [m/s]
M = moving mass
S = soft
M = medium
H = hard

Cushioning diagram Ø 25 mm



V = velocity [m/s]
M = moving mass
S = soft
M = medium
H = hard

Cushioning diagram Ø 16 mm

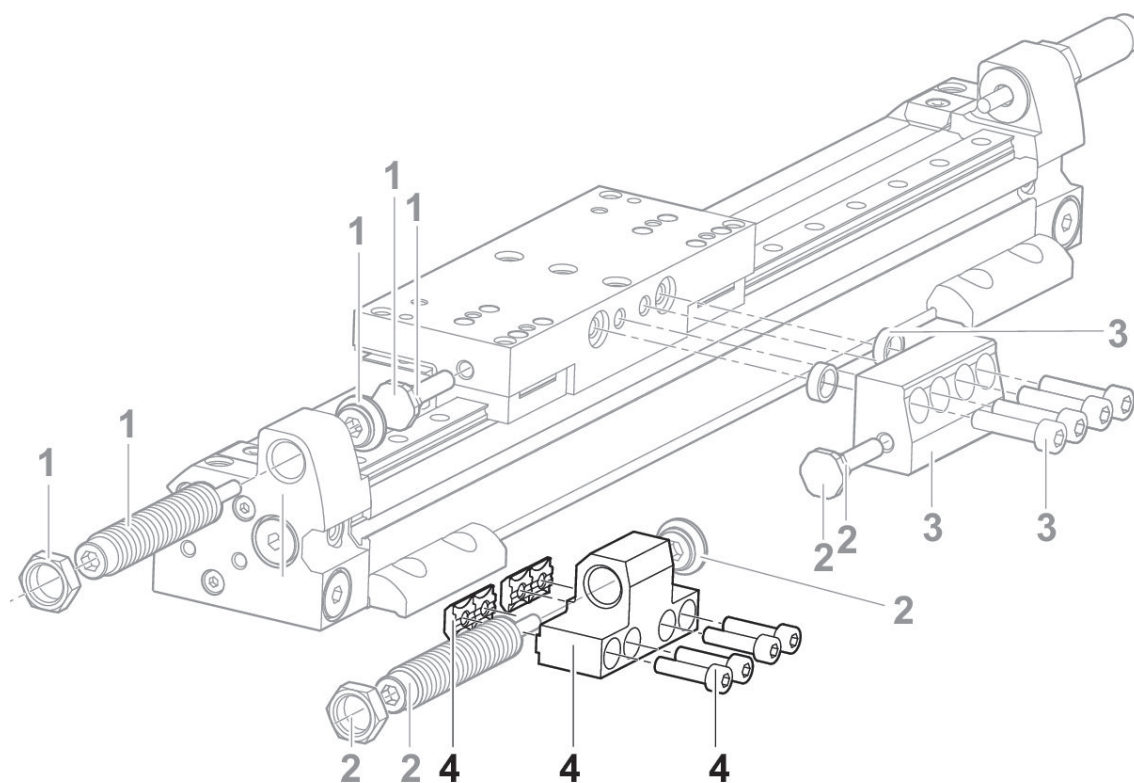


V = velocity [m/s]
M = moving mass
S = soft
M = medium
H = hard

Holder for the shock absorber for stroke length adjustment



for series	Part No.
RTC-SB	R412025646
RTC-SB	R412025647
RTC-SB	R412027256
RTC-HD, RTC-CG, CKP	R402002702
RTC-HD, RTC-CG, CKP	R402002703
RTC-HD, RTC-CG, CKP	R402002704
RTC-HD	R402003397

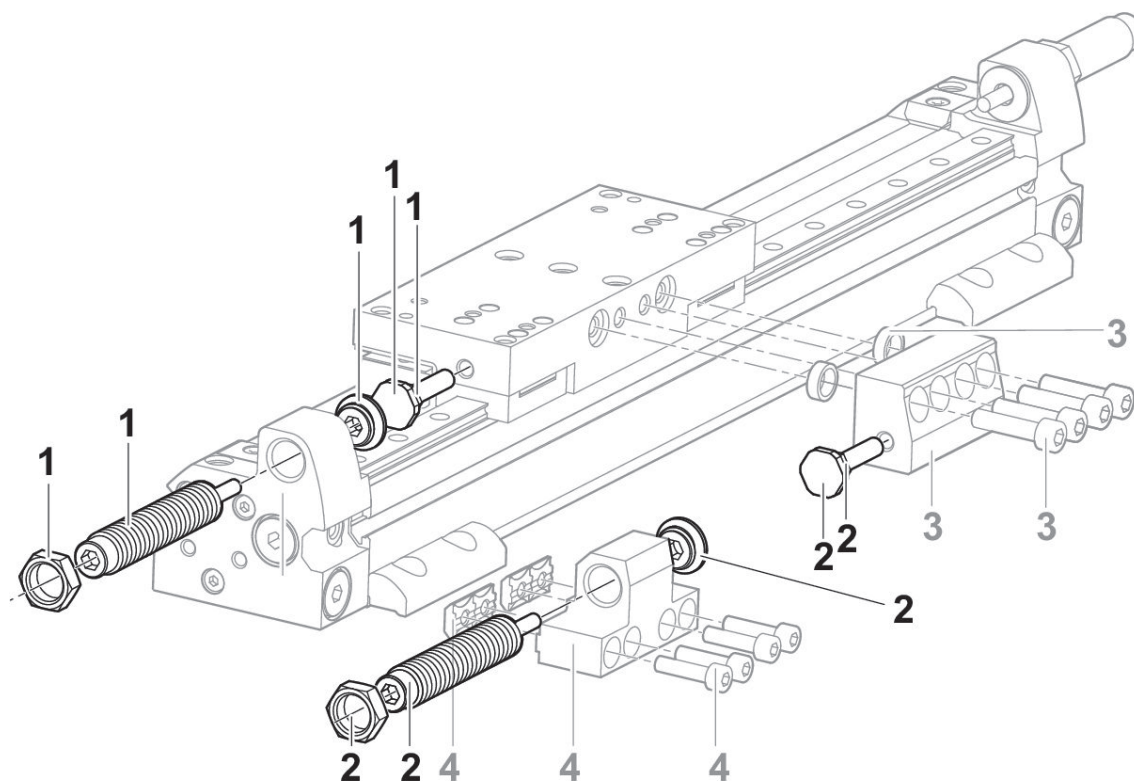


- 1) Shock absorber kit
- 2) Shock absorber kit
- 3) Stop
- 4) Holder for shock absorber

Shock absorber kit for stroke length adjustment

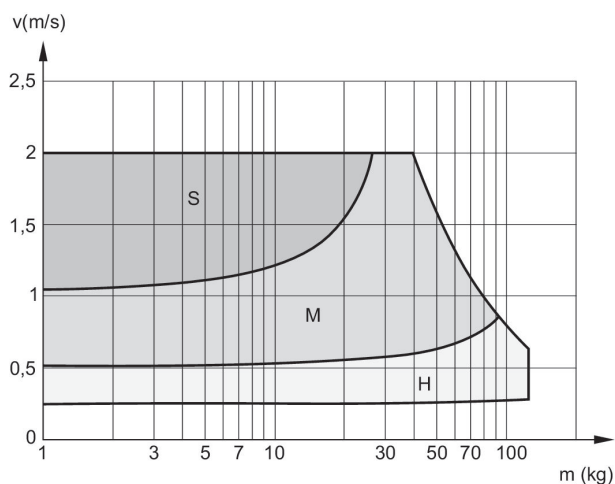


for series	Part No.
RTC-HD, RTC-CG, CKP	R412019543
RTC-HD, RTC-CG, CKP	R402002804
RTC-HD, RTC-CG, CKP	R402003618
RTC-HD, RTC-CG, CKP	R402002805
RTC-HD, RTC-CG, CKP	R402003619
RTC-HD, RTC-CG, CKP	R412019544
RTC-HD, RTC-CG	R402002806
RTC-HD, RTC-CG	R402003620
RTC-HD, RTC-CG, CKP	R412019545



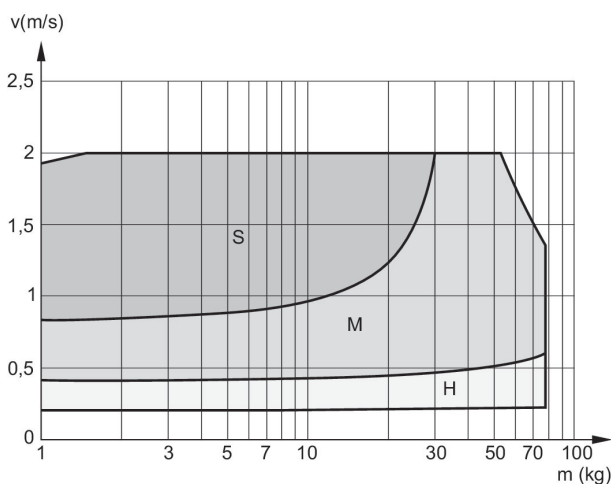
- 1) Shock absorber kit
- 2) Shock absorber kit
- 3) Stop
- 4) Holder for shock absorber

Cushioning diagram Ø 63 mm



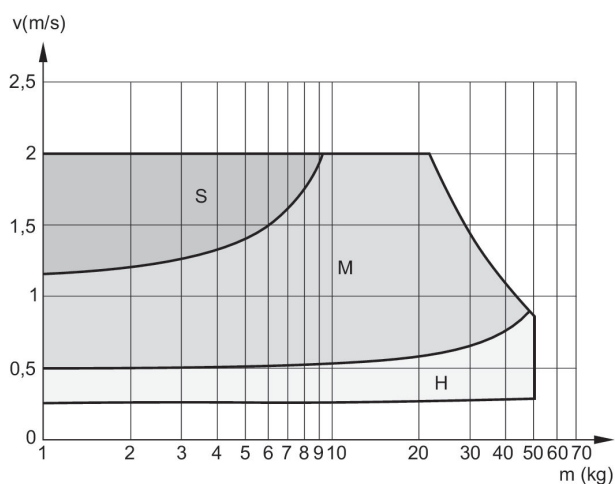
V = velocity [m/s]
M = moving mass
S = soft
M = medium
H = hard

Cushioning diagram Ø 50 mm



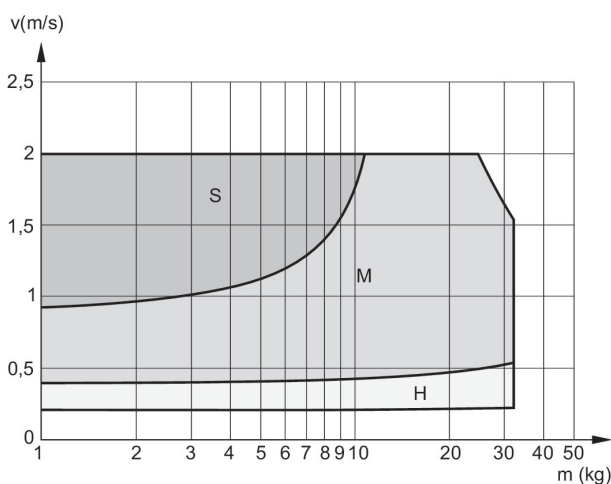
V = velocity [m/s]
M = moving mass
S = soft
M = medium
H = hard

Cushioning diagram Ø 40 mm



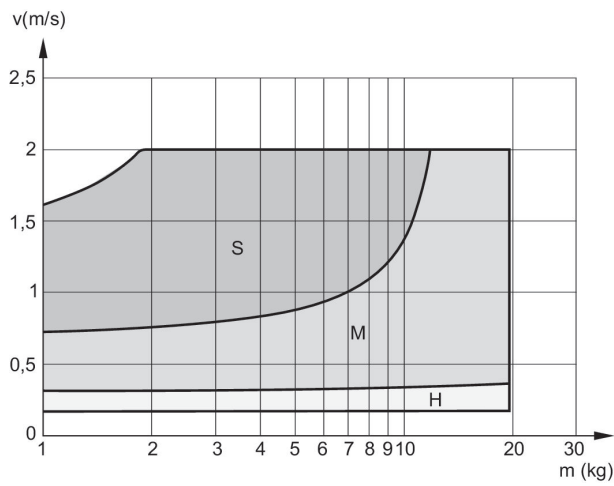
V = velocity [m/s]
M = moving mass
S = soft
M = medium
H = hard

Cushioning diagram Ø 32 mm



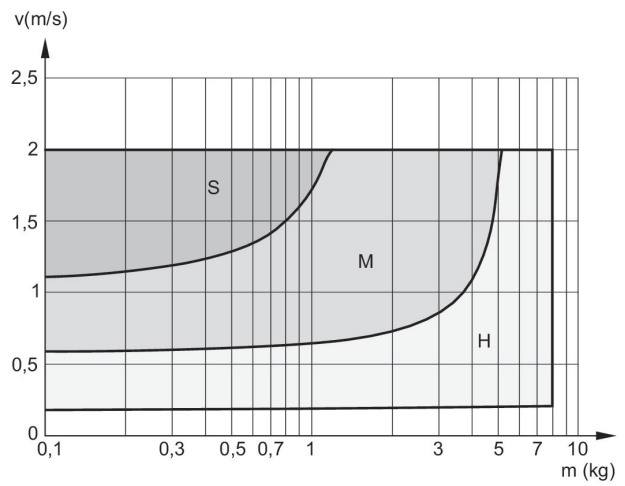
V = velocity [m/s]
M = moving mass
S = soft
M = medium
H = hard

Cushioning diagram Ø 25 mm



V = velocity [m/s]
M = moving mass
S = soft
M = medium
H = hard

Cushioning diagram Ø 16 mm







V = velocity [m/s]
M = moving mass
S = soft
M = medium
H = hard

Efficient pneumatic solutions, our program:
cylinders and drives, valves and valve systems,
air supply management, proportional pressure
control valves



Visit us: www.Emerson.com/aventics
Your local contact: Emerson.com/contactus

-  Emerson.com
-  Facebook.com/EmersonAutomationSolutions
-  LinkedIn.com/company/Emerson-Automation-Solutions
-  Twitter.com/EMR_Automation



The Emerson logo is a trademark and service mark of Emerson Electric Co. AVENTICS is a registered trademark of one of the Emerson family of companies. All other trademarks are the property of their respective owners. © 2020 Emerson Electric Co. All rights reserved.



CONSIDER IT SOLVED™